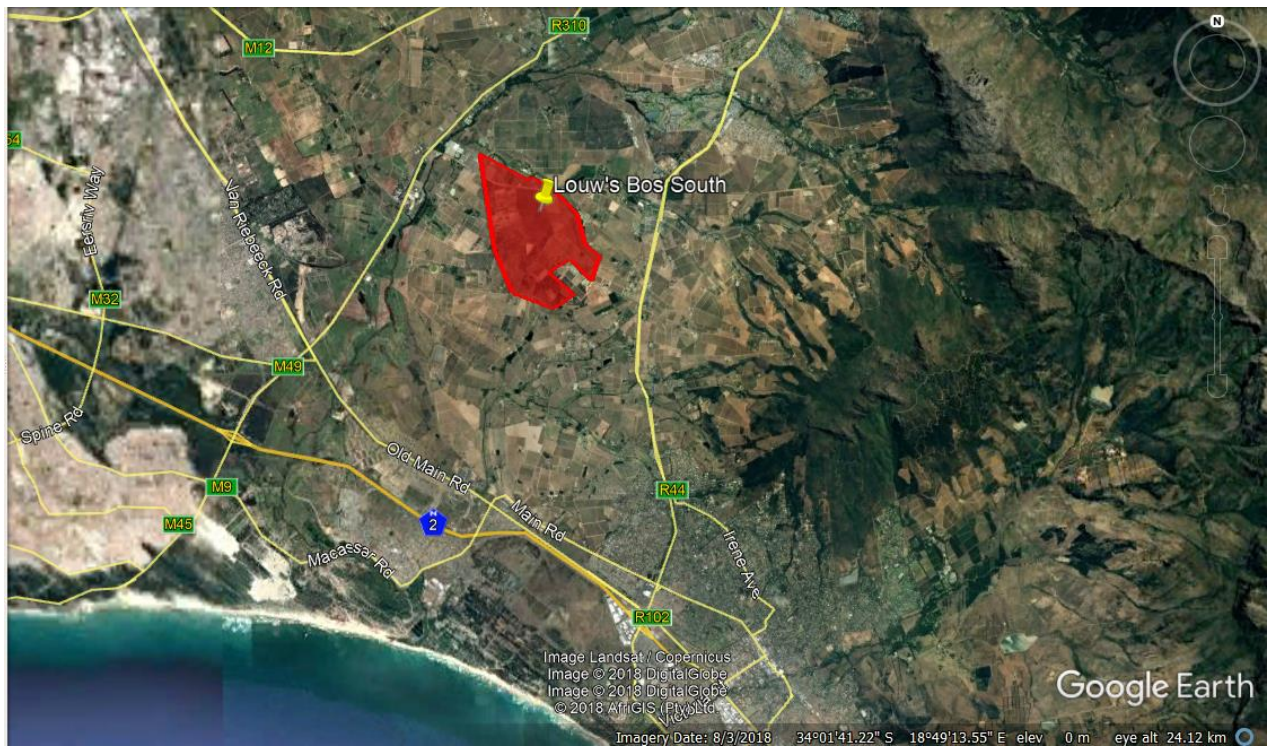
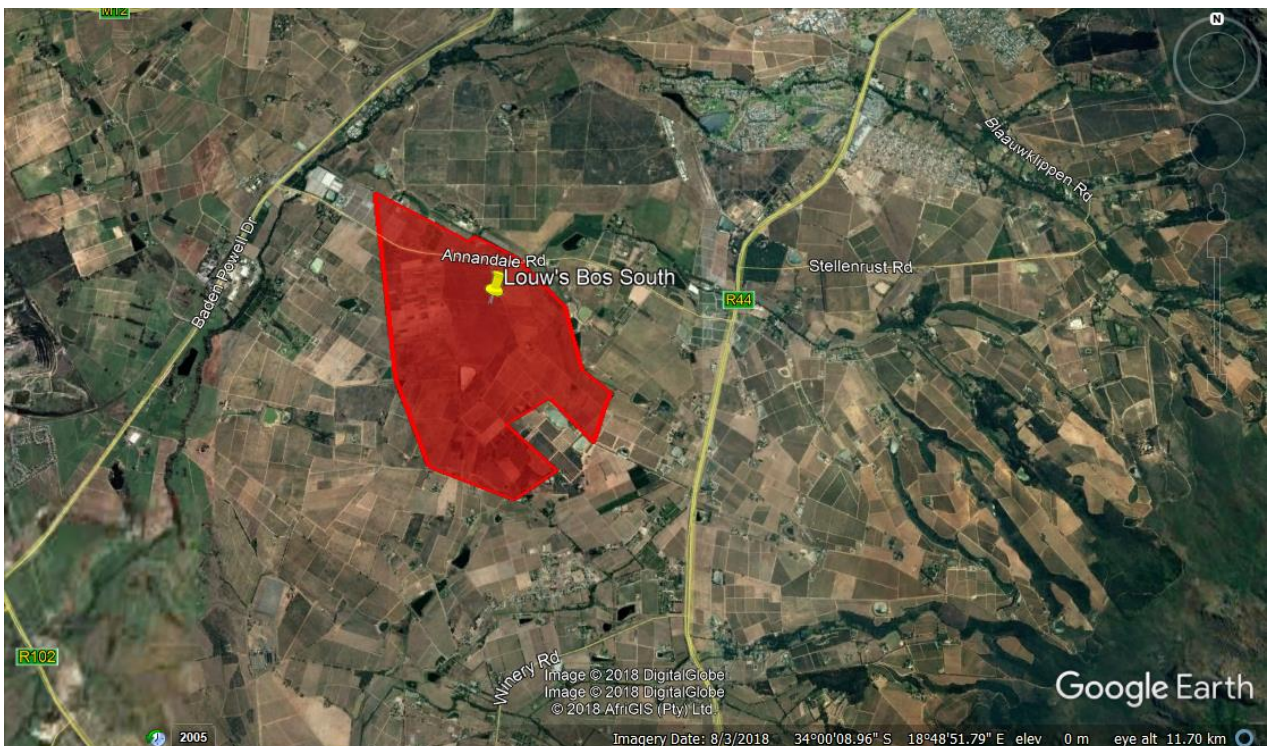


## Appendix A – Locality maps

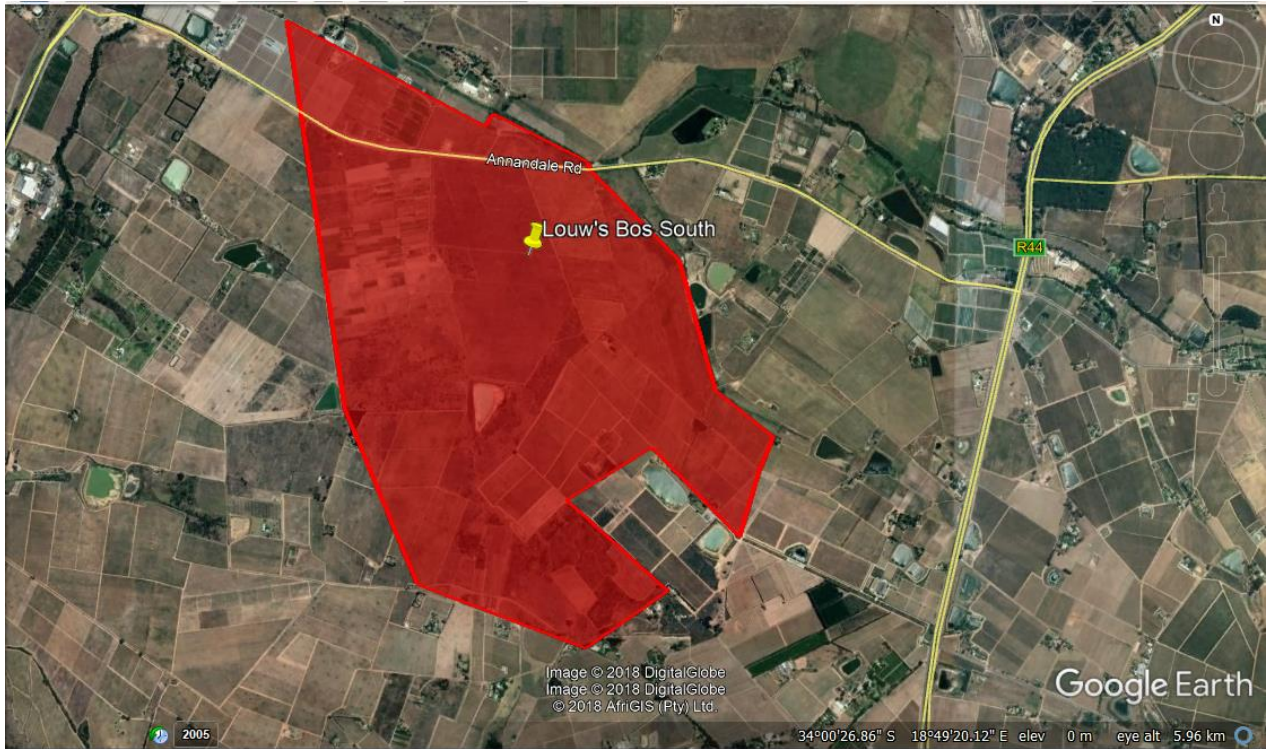
### Alternative 1 (Preferred Site):



**Figure 1:** Location of region for preferred alternative of proposed Louw's Bos Public Cemetery and Memorial Park in southern region of Stellenbosch District Municipality (indicated in red).



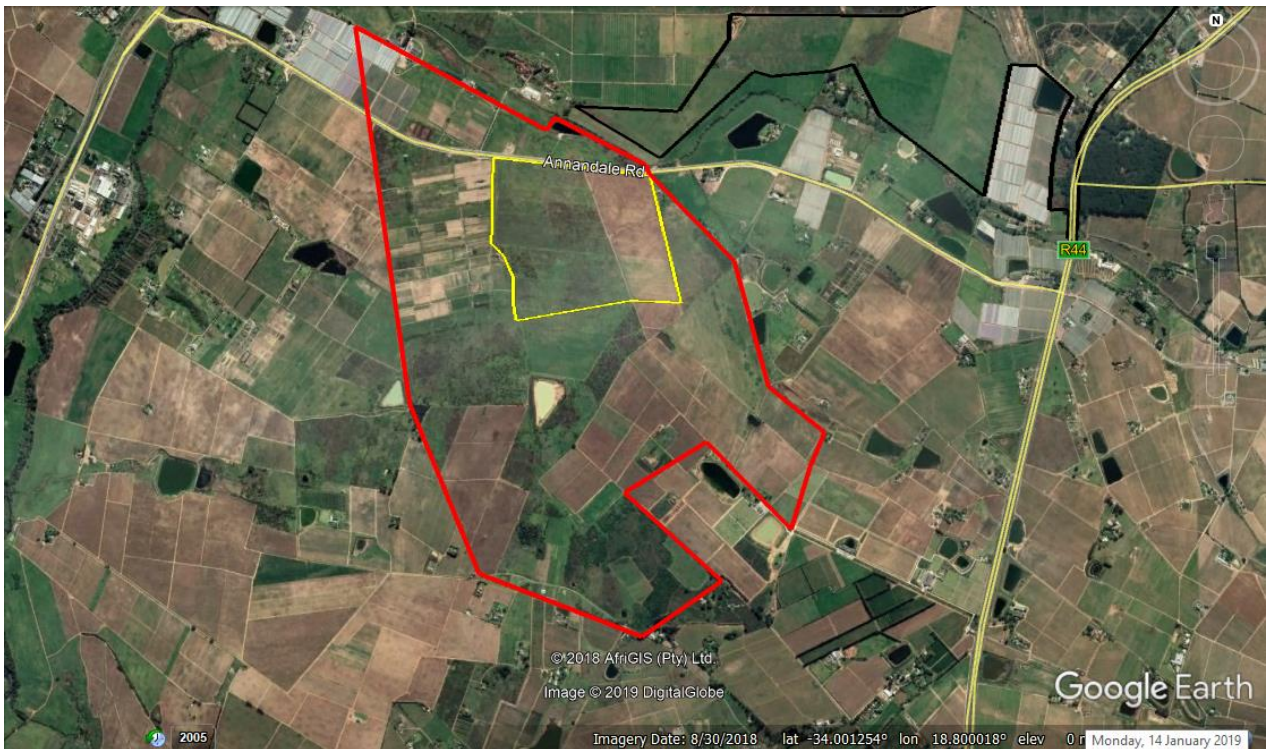
**Figure 2:** Municipal land available for the preferred location of the proposed Louw's Bos Public Cemetery and Memorial Park in the southern region of Stellenbosch District Municipality relative to regional roads.



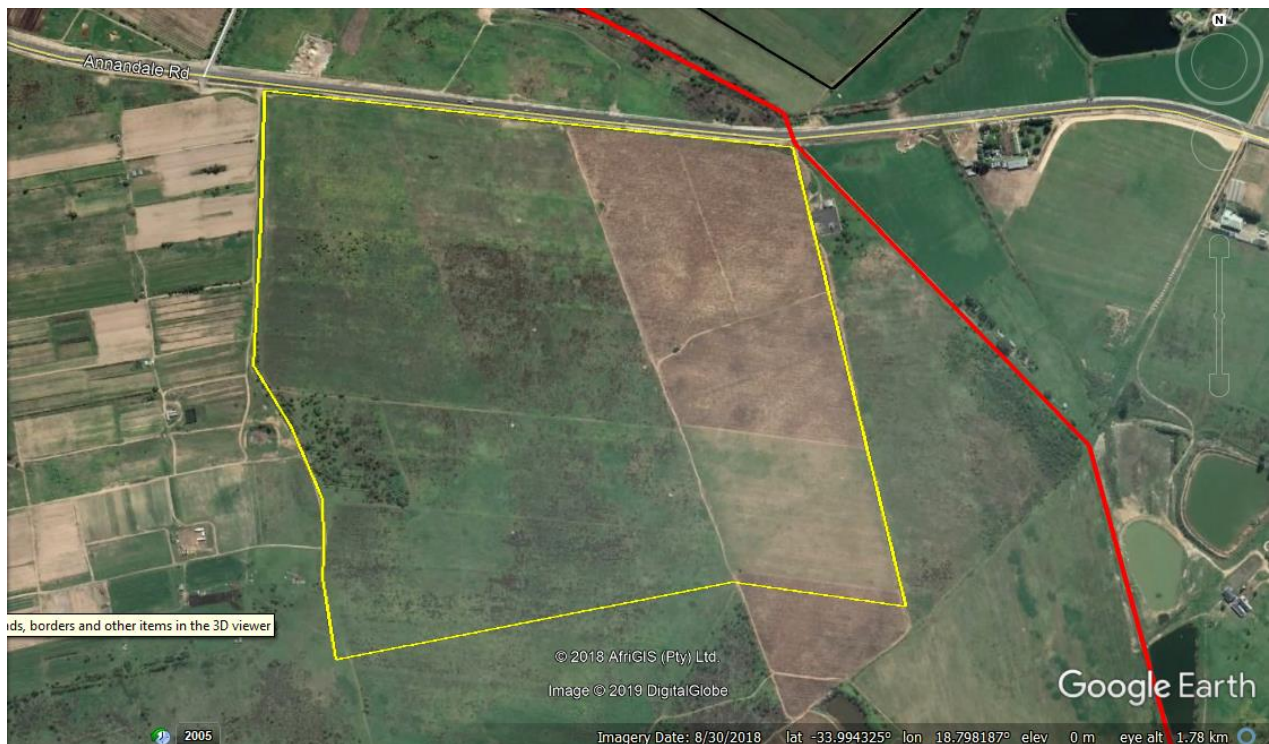
**Figure 3:** Location of total 487ha area of remainder of Farm Louw's Bos No. 502 on which the preferred alternative site for Louw's Bos Public Cemetery and Memorial Park, is proposed.



**Figure 4:** Location of smaller 74ha site (outlined in yellow) lying south of Annandale Road, within total 487ha area of remainder of Farm Louw's Bos No. 502 (outlined in red). Within the 74ha site, the actual cemetery occupies a footprint of approximately 34.53ha made up of 19.97ha for traditional graves; 11.79ha for an informal zone with lawn graves, trees as headstones (for ashes/family ash interment) and future cemetery expansion; 1.38ha as a defined zone; 0.75ha for the columbarium zone and 0.64ha for the memorial park centre.

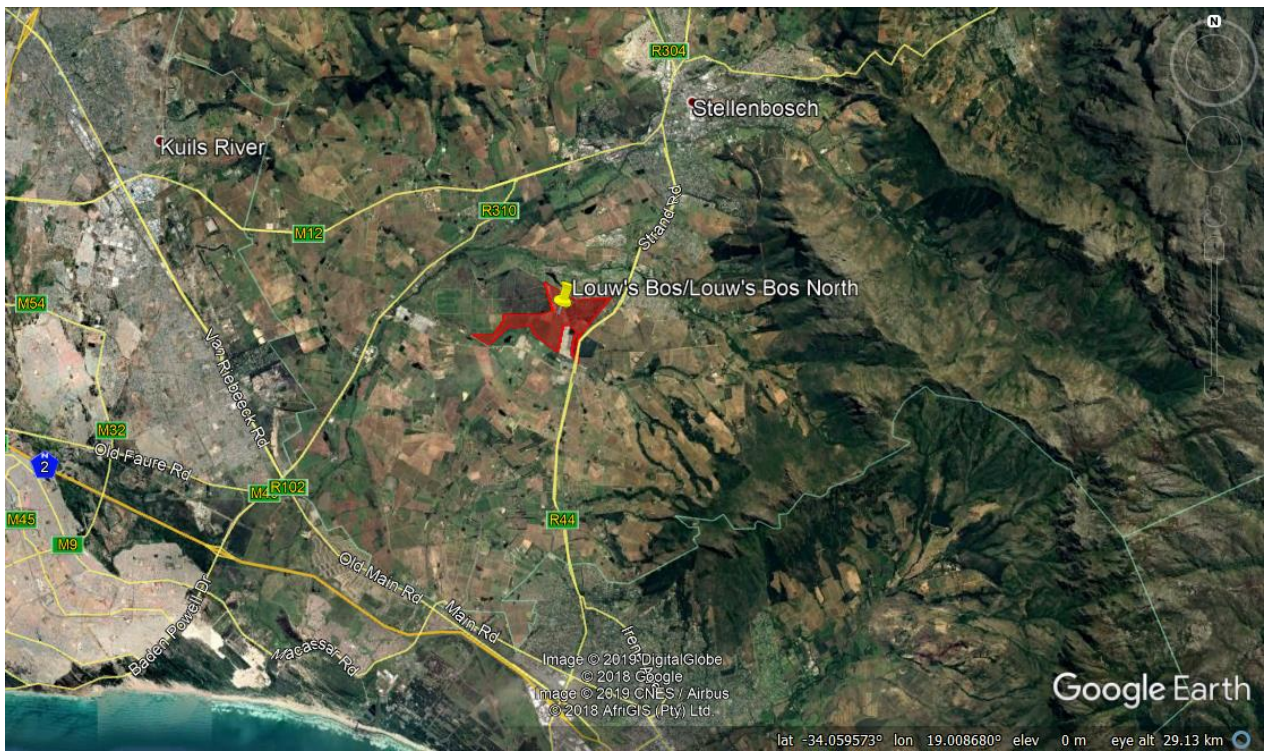


**Figure 5:** Location of smaller 74ha site (outlined in yellow) within total 487ha area (outlined in red) of remainder of Farm Louw's Bos No. 502, where the preferred alternative for the proposed Louw's Bos Public Cemetery and Memorial Park development layout footprint/s will be located.



**Figure 6:** Location of smaller 74ha site (outlined in yellow) showing existing accessibility from Annandale Road onto dirt roads. Boundary of total remainder of Farm Louw's Bos No. 502/Louw's Bos South site, indicated in red.

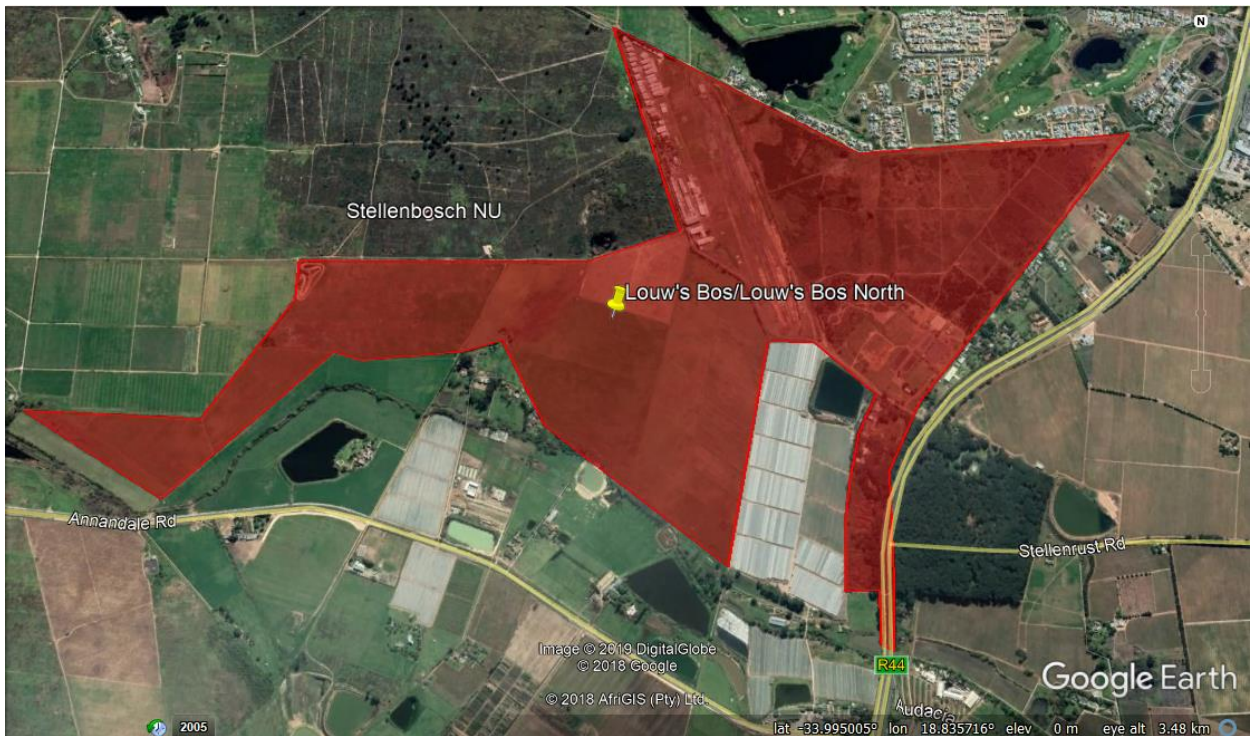
## Alternative 2:



**Figure 1:** Alternate land available (indicated in red) for proposed alternative 2 (i.e. Louw's Bos North) for location of Louw's Bos Public Cemetery and Memorial Park in southern region of Stellenbosch District Municipality.



**Figure 2:** Municipal land (indicated in red) where the proposed alternative Louw's Bos/Louw's Bos North Public Cemetery and Memorial Park in the southern region of Stellenbosch District Municipality, could be located.



**Figure 3:** Location of total 240ha site of remainder of Farm Louw's Bos No. 502 on which the alternative site for Louw's Bos Public Cemetery and Memorial Park is proposed, lying north of Annandale Road.



**Figure 4:** Location of smaller 88ha site (outlined in orange) on the southern and south-western areas within total 240ha area of remainder of Farm Louw's Bos No. 502 (outlined in red), indicating potential for accessibility from Annandale road. Specific development footprint divisions/zones within the 88ha site have not been determined as yet but will be similar to the footprints proposed for Alternative 1.



**Figure 5:** Location of smaller 88ha site (outlined in orange) on the southern and south-western areas within remainder of Farm Louw's Bos No. 502 (outlined in red), where the preferred alternative for the proposed Louw's Bos Public Cemetery and Memorial Park development layout footprint/s will be located.



**Figure 6:** Location of smaller 88ha site (outlined in orange) showing existing accessibility from Annandale Road on dirt roads. Boundary of total remainder of Farm Louw's Bos No. 502/Louw's Bos North site, indicated in red.