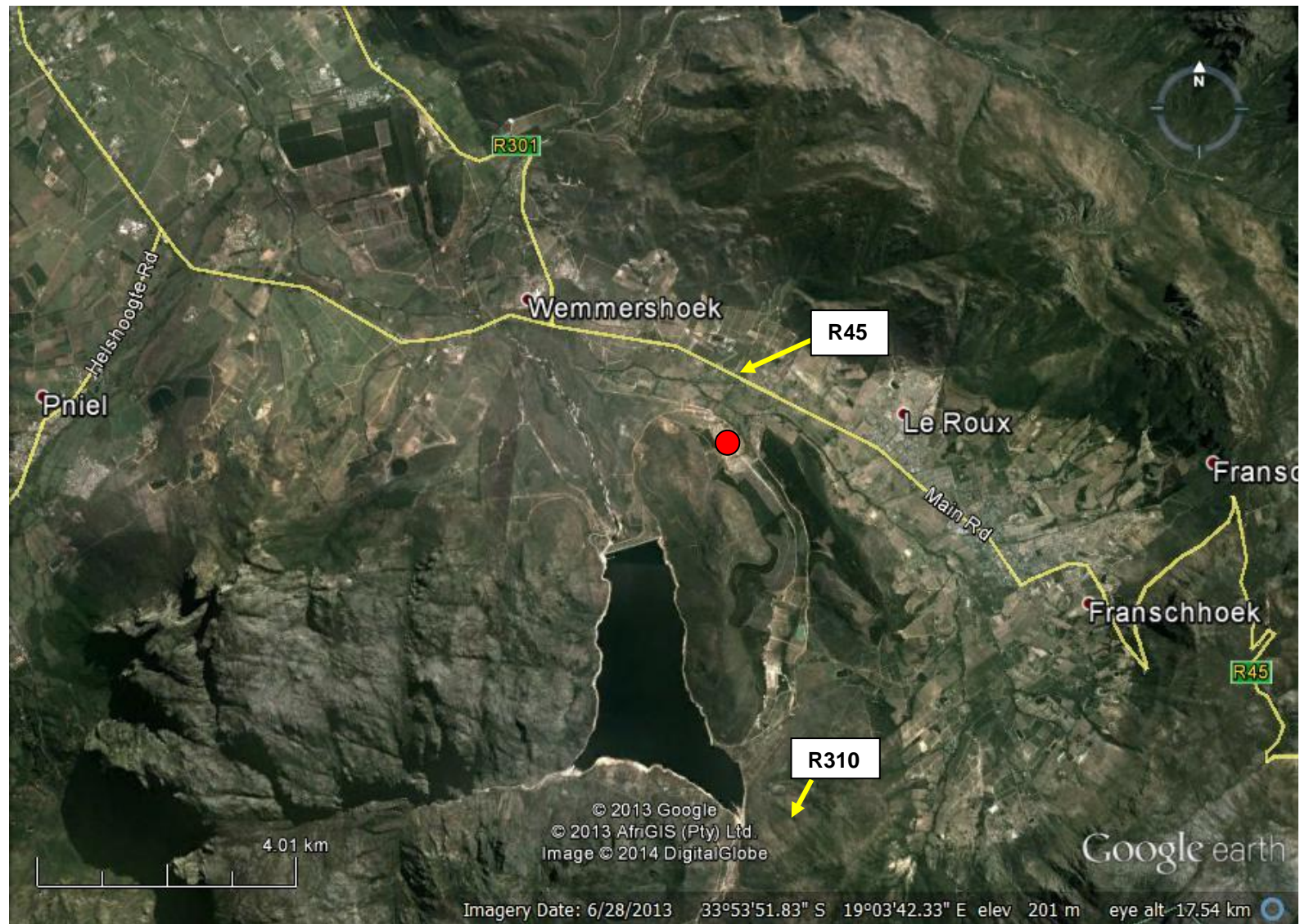


PROPOSED HOUSING DEVELOPMENT, FARM 1653, 1339 AND 1158/1, LA MOTTE, FRANSCHHOEK



SITE CO-ORDINATES

FARM 1653: 33° 53'29.11" S
19° 04'11.48" E
FARM 1339: 33° 53'35.45" S
19° 04'43.25" E
FARM 1158/1: 33° 53'56.50" S
19° 04'35.50" E

● THE SITE

D:EA&DP REF:
16/3/1/1/B4/12/1028/14

FEBRUARY 2015


EnviroAfrica
Environmental Management and Impact Assessment
Omgewingsbestuur en Impakbeoordeling

PROPOSED HOUSING DEVELOPMENT, FARM 1653, 1339 AND 1158/1, LA MOTTE, FRANSCHHOEK



SITE CO-ORDINATES

FARM 1653: 33° 53'29.11" S
19° 04'11.48" E
FARM 1339: 33° 53'35.45" S
19° 04'43.25" E
FARM 1158/1: 33° 53'56.50" S
19° 04'35.50" E

 THE SITE

D:EA&DP REF:
16/3/1/1/B4/12/1028/14

FEBRUARY 2015


EnviroAfrica
Environmental Management and Impact Assessment
Omgewingsbestuur en Impakbeoordeling