



Legend

Wetlands (NFEPA)

- Artificial
- Estuaries
- Natural

Rivers (Strahler Stream Order)

- 5
- 4
- 3
- 2
- 1
- Dams (NGI)

BSP ESA: Restore

- ESA2: Restore from plantation or high density IAP
- ESA2: Restore from other land use
- ESA2: Restore where appropriate (CT)

BSP ESA

- ESA: Aquatic
- ESA: Terrestrial

BSP CBA: Degraded

- CBA2: Aquatic
- CBA2: Terrestrial

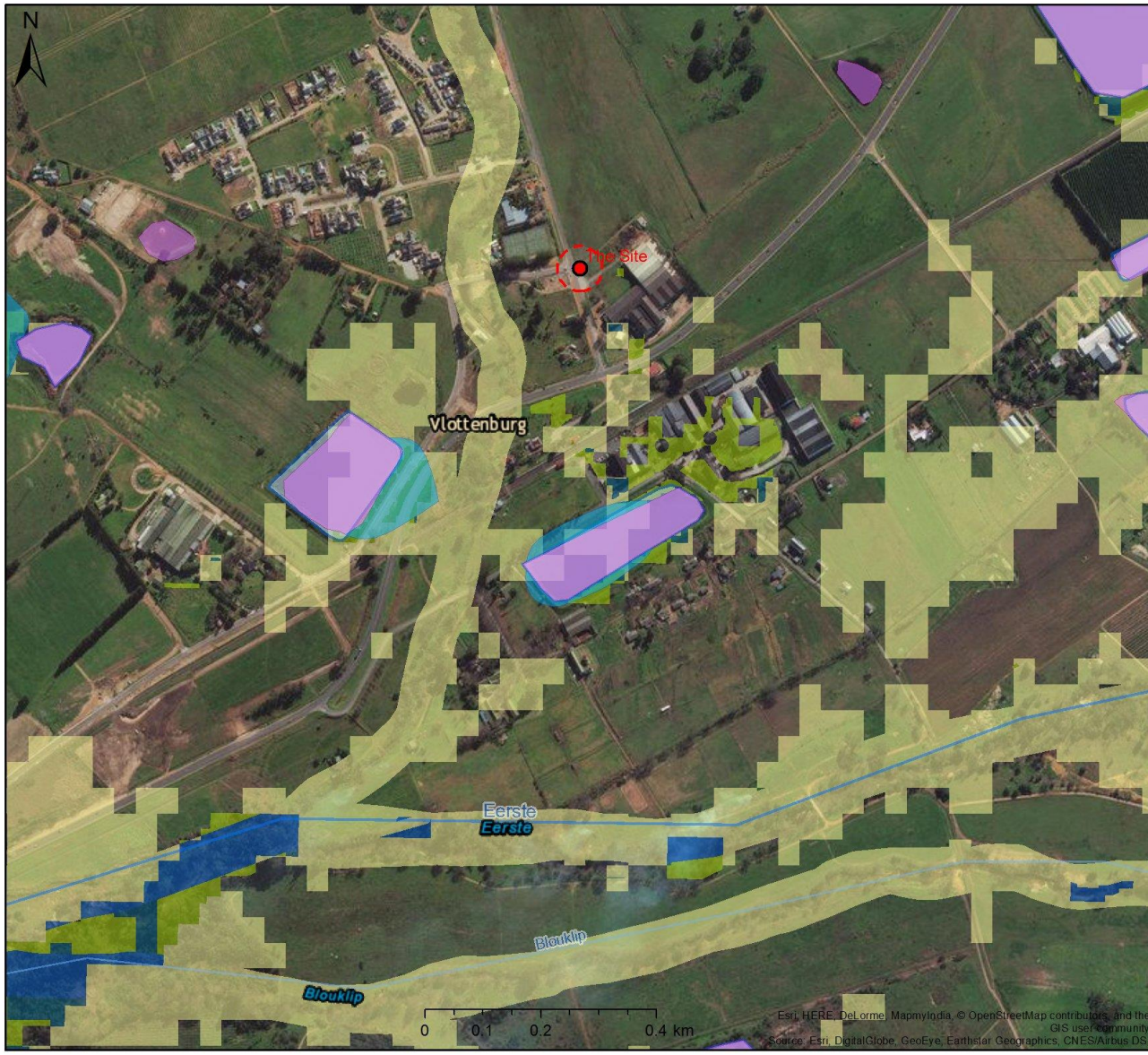
Scale: 1:20 738

Date created: April 5, 2017



Western Cape Government
Agriculture

Esri, HERE, DeLorme, MapmyIndia, © OpenStreetMap contributors, and the GIS user community
Source: Esri, DigitalGlobe, GeoEye, Earthstar Geographics, CNES/Airbus DS



Legend

Wetlands (NFEPA)

- Artificial
- Estuaries
- Natural

Rivers (Strahler Stream Order)

- 5
- 4
- 3
- 2
- 1

Dams (NGI)

BSP ESA: Restore

- ESA2: Restore from plantation or high density IAP
- ESA2: Restore from other land use
- ESA2: Restore where appropriate (CT)

BSP ESA

- ESA: Aquatic
- ESA: Terrestrial

BSP CBA: Degraded

- CBA2: Aquatic
- CBA2: Terrestrial

Scale: 1:9 028

Date created: April 5, 2017



Western Cape Government

Agriculture

Esri, HERE, DeLorme, MapmyIndia, © OpenStreetMap contributors, and the GIS user community
Source: Esri, DigitalGlobe, GeoEye, Earthstar Geographics, CNES/Airbus DS,



Legend

Wetlands (NFEPA)

- Artificial
- Estuaries
- Natural

Rivers (Strahler Stream Order)

- 5
- 4
- 3
- 2
- 1

Dams (NGI)

- Dams (NGI)

BSP ESA: Restore

- ESA2: Restore from plantation or high density IAP
- ESA2: Restore from other land use
- ESA2: Restore where appropriate (CT)

BSP ESA

- ESA: Aquatic
- ESA: Terrestrial

BSP CBA: Degraded

- CBA2: Aquatic
- CBA2: Terrestrial

Scale: 1:1 128

Date created: April 5, 2017



Western Cape Government

Agriculture

Esri, HERE, DeLorme, MapmyIndia, © OpenStreetMap contributors, and the GIS user community
 Source: Esri, DigitalGlobe, GeoEye, Earthstar Geographics, CNES/Airbus DS,