

**POSTER PLACEMENT: NEMA APPLICATION FORM FOR THE PROPOSED DEVELOPMENT OF A 25M HIGH TELECOMMUNICATIONS MAST AND BASE STATION ON FARM 387/25, STELLENBOSCH HILLS, VLOTTENBURG, WESTERN CAPE.**



Figure 1: Poster Placed at Vlotenburg Kontant Winkel.



Figure 2: Poster placed at Vlotenburg Kontant Winkel.



Figure 3: Maildrops placed at Stellenbosch Public Library.



Figure 4: Poster Placed on Stellenbosch Library Notice Board.

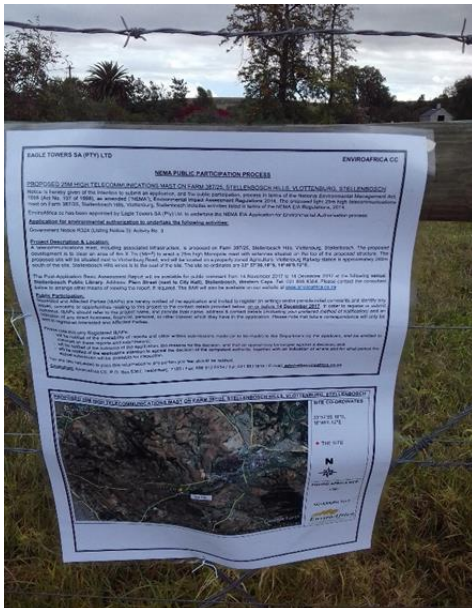


Figure 5: Poster placed opposite the site.



Figure 6: Poster placed opposite the site, along Vlotenburg Road.





Figure 7: The poster placed opposite that the site along Vlotenburg Road, looking towards Stellenbosch Hills in the background.



Figure 8: A view of the proposed site.



Figure 9: Poster placed at the boundary fence of The Vineyard Christian Fellowship, along Vlotenburg Road as viewed from the site.



Figure 10: Looking from poster toward the site.



Figure 11: Poster placed at Vlotenburg Primary School.



Figure 12: Poster placed at Vlotenburg Primary School.



Figure 13: Poster placed at Spaza Shop south of Vlotenburg Primary School.



Figure 14: Poster placed at Spaza Shop south of Vlotenburg Primary School.