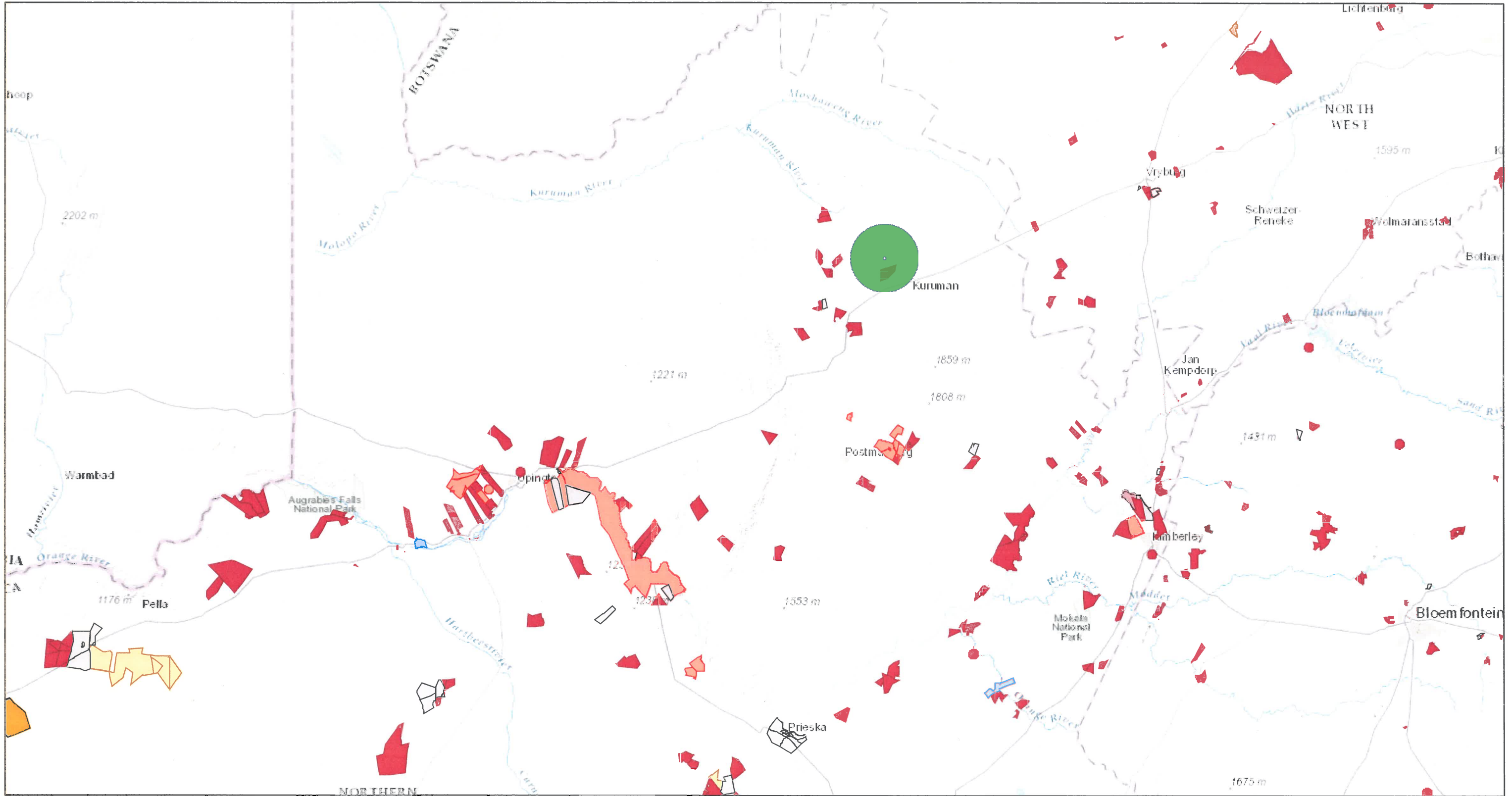


ArcGIS Web Map

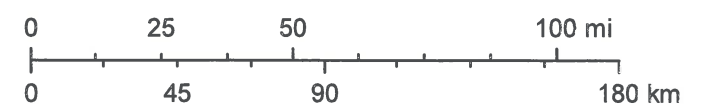


February 27, 2017

- REEA_OR_2016_Q3**
- Onshore Wind and Solar PV
 - Solar CPV
 - Solar CSP
 - Solar CSP and PV
 - Solar PV
 - Co-Generation
 - HydroElectric
 - HydroPower
 - No Technology
 - Onshore Wind

Figure 3 - Potential cumulative impact radius for proposed solar PV development site relative to other approved renewable energy projects in the region. Proposed site is at centre of green circle (with 30km radius) as indicated on map. Although this is a reapplication, the original proposed development site which was authorised, was included on the above map provided by the DEA website but positioned slightly lower than it's actual location: (<https://dea.maps.arcgis.com/apps/webappviewer>).

1:2,311,162



Sources: Esri, HERE, DeLorme, Intermap, increment P Corp., GEBCO, USGS, FAO, NPS, NRCAN, GeoBase, IGN, Kadaster NL, Ordnance Survey, Esri Japan, METI, Esri China (Hong Kong), swisstopo, MapmyIndia, © OpenStreetMap contributors, and the GIS User Community