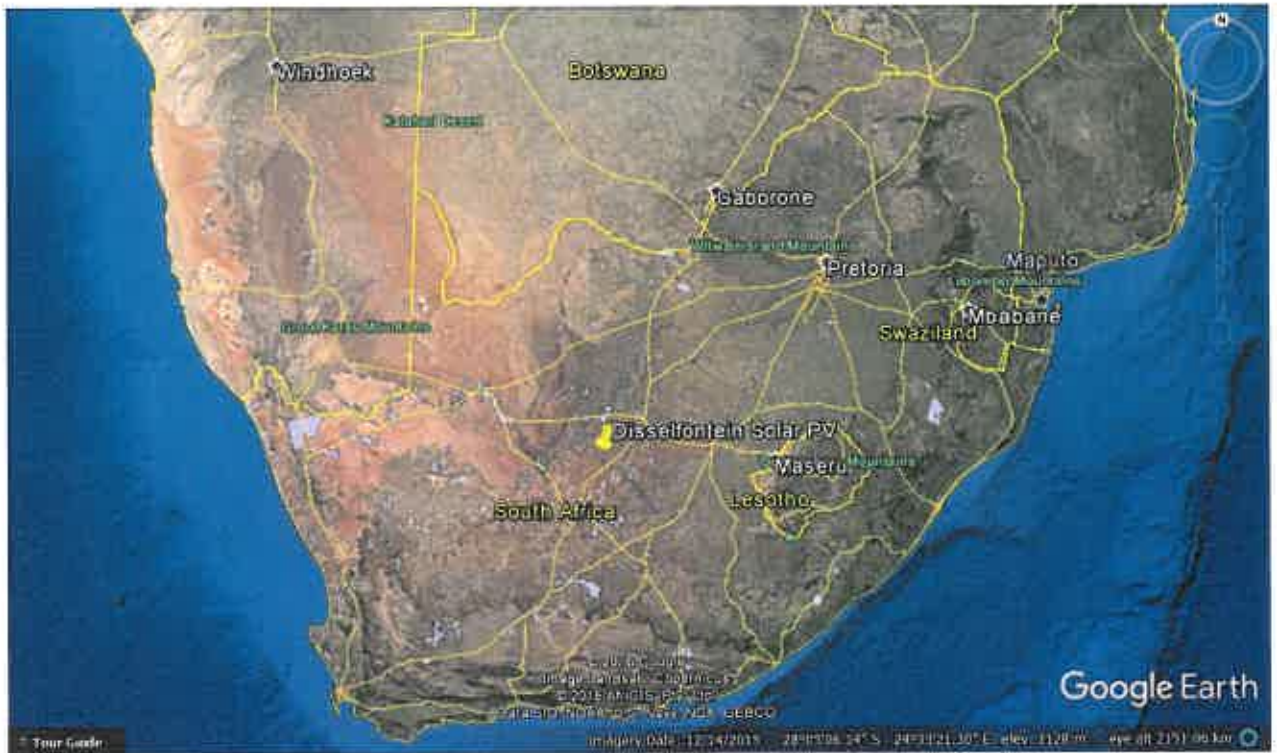


Appendix A: Maps

Appendix A-1: Locality Maps

Appendix A: Locality Maps





Appendix A-2: Layout Plan/Map

PLANT SUMMARY

Name	Number of tables	Power plant capacity	North Orientation	East/West Pitch	Pitch between table	G.C.R	Table	Number of module per table	Module capacity	Capacity per table	Number of string per table
Exotrack HZ	837	5,297 MWdc	0.00°	6.00 m	1 m, 2 m, 8 m	33.80 %	Est-Table	20	315.00 Wp	6.30 MWc	1

BLOCK SUMMARY

Power Conversion Station	Number of Exotrack HZ	Number of Tables	Power Capacity	Number of 24 Input SCB	Number of 16 Input SCB
PCS 1	12	308	1,859 MWdc	3	17
PCS 2	11	324	1,853 MWdc	2	15
PCS 3	15	315	1,853 MWdc	8	9

SUMMARY

Name	Total Length
DC string line length	22 726 m
DC 15 kV length	21 616 m
DC 15 kV length	19 664 m
Module Position	1 006 m
IP Access Length	1 047 m
IP Access Length	888 m
Panel Length	2 014 m
Panel Length	1 952 m
No. of IP panel 15	14
No. of IP panel 20	44
No. of panel between adjacent blocks	2
No. Number stations	3
No. of Exotrack HZ	30



DCS COMMENTS

1	2022/04/13	1
2	2022/04/13	1
3	2022/04/13	1
4	2022/04/13	1
5	2022/04/13	1
6	2022/04/13	1
7	2022/04/13	1
8	2022/04/13	1
9	2022/04/13	1
10	2022/04/13	1
11	2022/04/13	1
12	2022/04/13	1
13	2022/04/13	1
14	2022/04/13	1
15	2022/04/13	1
16	2022/04/13	1
17	2022/04/13	1
18	2022/04/13	1
19	2022/04/13	1
20	2022/04/13	1
21	2022/04/13	1
22	2022/04/13	1
23	2022/04/13	1
24	2022/04/13	1
25	2022/04/13	1
26	2022/04/13	1
27	2022/04/13	1
28	2022/04/13	1
29	2022/04/13	1
30	2022/04/13	1
31	2022/04/13	1
32	2022/04/13	1
33	2022/04/13	1
34	2022/04/13	1
35	2022/04/13	1
36	2022/04/13	1
37	2022/04/13	1
38	2022/04/13	1
39	2022/04/13	1
40	2022/04/13	1
41	2022/04/13	1
42	2022/04/13	1
43	2022/04/13	1
44	2022/04/13	1
45	2022/04/13	1
46	2022/04/13	1
47	2022/04/13	1
48	2022/04/13	1
49	2022/04/13	1
50	2022/04/13	1
51	2022/04/13	1
52	2022/04/13	1
53	2022/04/13	1
54	2022/04/13	1
55	2022/04/13	1
56	2022/04/13	1
57	2022/04/13	1
58	2022/04/13	1
59	2022/04/13	1
60	2022/04/13	1
61	2022/04/13	1
62	2022/04/13	1
63	2022/04/13	1
64	2022/04/13	1
65	2022/04/13	1
66	2022/04/13	1
67	2022/04/13	1
68	2022/04/13	1
69	2022/04/13	1
70	2022/04/13	1
71	2022/04/13	1
72	2022/04/13	1
73	2022/04/13	1
74	2022/04/13	1
75	2022/04/13	1
76	2022/04/13	1
77	2022/04/13	1
78	2022/04/13	1
79	2022/04/13	1
80	2022/04/13	1
81	2022/04/13	1
82	2022/04/13	1
83	2022/04/13	1
84	2022/04/13	1
85	2022/04/13	1
86	2022/04/13	1
87	2022/04/13	1
88	2022/04/13	1
89	2022/04/13	1
90	2022/04/13	1
91	2022/04/13	1
92	2022/04/13	1
93	2022/04/13	1
94	2022/04/13	1
95	2022/04/13	1
96	2022/04/13	1
97	2022/04/13	1
98	2022/04/13	1
99	2022/04/13	1
100	2022/04/13	1



KEREN Energy Development (Pty) Ltd
20122087307
SITE LAYOUT

Project Name: 20122087307
Project No: E0028-HZ-E-LAY-D1F
Scale: D1
Revision: A

Author: [Name]
Checked by: [Name]
Date: [Date]

Appendix A-3: Sensitivity Map

Disselfontein Sensitivity Map:

The specialist Addendum to the Biodiversity Assessment and Botanical Scan, 2017 (attached to the post-application BAR under Appendix D2) states that the proposed Disselfontein site does not fall within the Griqualand West Centre of Endemism.

It further states that according to the Red List of South African Plants (version 2017.1., www.redlist.sanbi.org, accessed on 2017/03/22) no listed plant species is associated with Vaalbos Rocky Shrubland i.e. no red list plant species were encountered or are expected on the proposed site.

In addition, no species protected in terms of NEM:BA were encountered. Five specimens of a protected tree species in terms of the NFA, were encountered (see Figure 1 below) and will require application for either a tree removal permit from DAFF or that the layout of the solar PV panel be arranged around the trees. Some Schedule 2 protected species in terms of the NCNCA were encountered and will also require application for a floral permit from DENC.

Red shading indicates 32m buffer zone for intermittent natural water course running through proposed site.

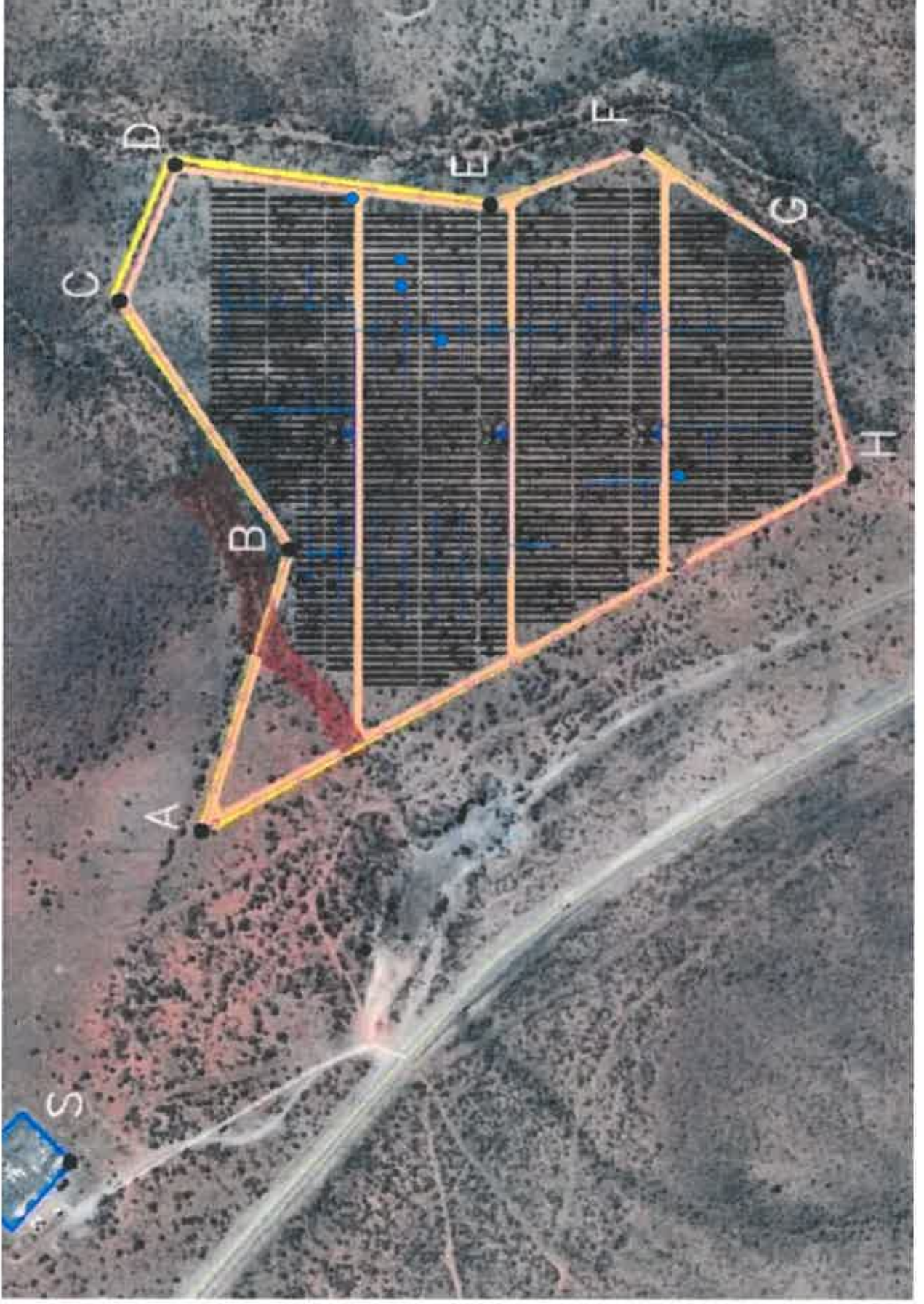


Figure 1 – Red shaded area indicates 32m setback buffer zone between watercourse within the site and proposed layout area of the solar PV panels. Blue dots indicate five NFA protected trees.