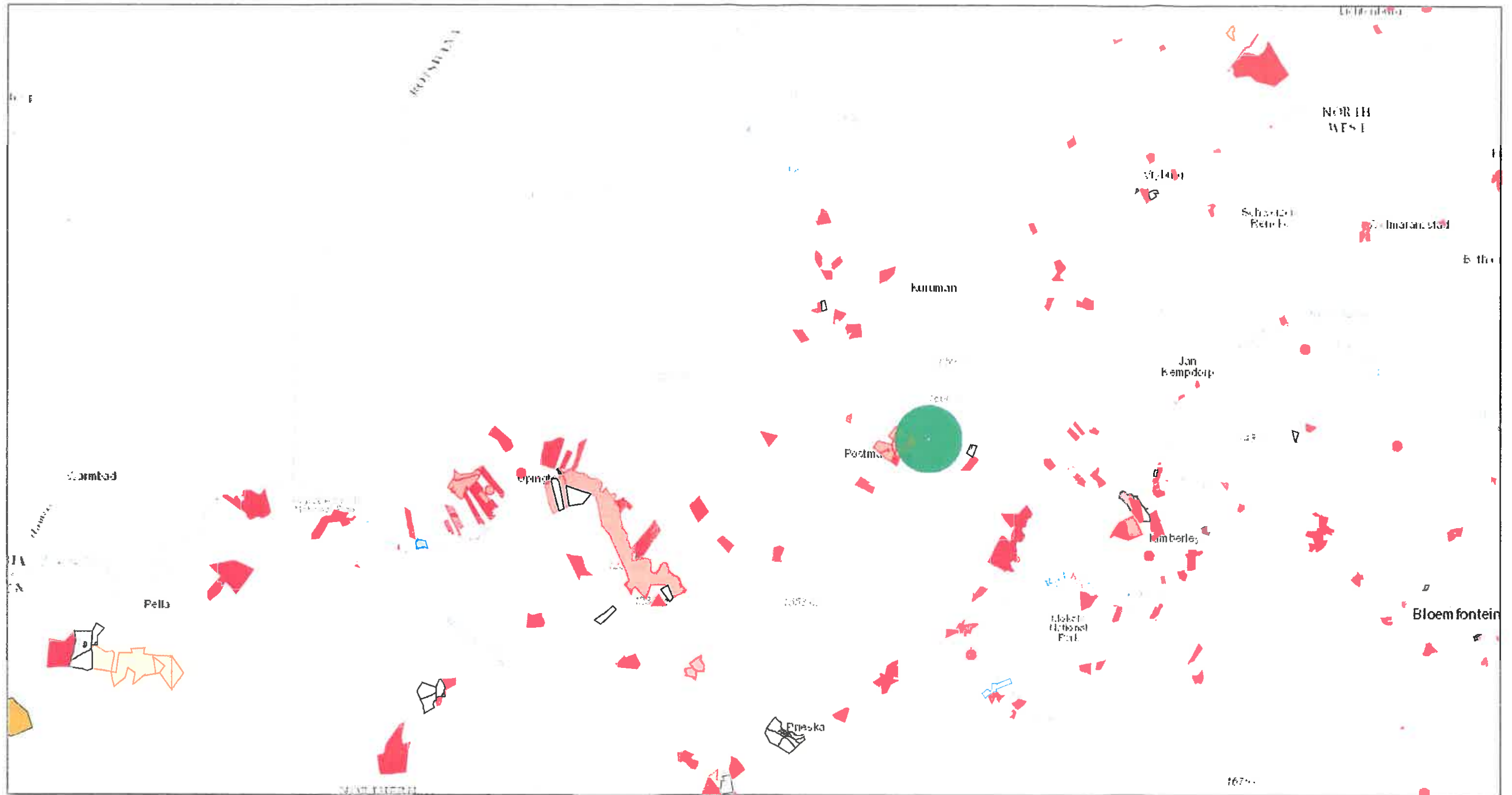


# ArcGIS Web Map

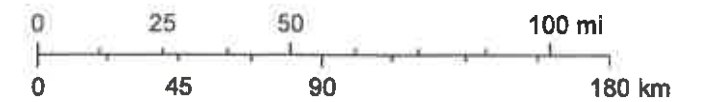


February 27, 2017

REEA_OR_2016_Q3	
	Onshore Wind and Solar PV
	Co-Generation
	Solar CPV
	HydroElectric
	HydroPower
	Solar CSP
	Solar CSP and PV
	No Technology
	Solar PV
	Onshore Wind

Figure 3 - Potential cumulative impact radius for proposed solar PV development site relative to other approved renewable energy projects in the region. Proposed site is at centre of green circle (with 30km radius) as indicated on map. Although this is a reapplication, the original proposed development site which was authorised, was not included on the above map provided by the DEA website: (<https://dea.maps.arcgis.com/apps/webappviewer>).

1:2,311,162



Sources: Esri, HERE, DeLorme, Intermap, increment P Corp., GEBCO, USGS, FAO, NPS, NRCAN, GeoBase, IGN, Kadaster NL, Ordnance Survey, Esri Japan, METI, Esri China (Hong Kong), swisstopo, MapmyIndia, © OpenStreetMap contributors, and the GIS User Community