

Appendix C: Facility Illustration/s

01 02 03 04 05 06 07 08 09 10 11 12 13 14 15 16 17 18 19 20 21 22 23 24 25 26 27 28 29 30 31 32 33 34 35 36 37 38 39 40 41 42 43 44 45 46 47 48 49 50 51 52 53 54 55 56 57 58 59 60 61 62 63 64 65 66

PLANT SUMMARY

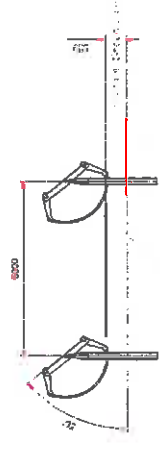
Name	Power plant capacity	North Orientation	East/West Pitch	Pitch between table	Table	Number of module per table	Module capacity	Capacity per table	Number of string per table
Dismark 12	5,717 MW	0.00°	6.00 m	6 m, 3 m, 1 m	5+Table	30	318.00 Mw	6.20 MW	1

BLOCK SUMMARY

Power Conversion Station	Number of Trackers	Number of Tables	Power Capacity	Number of 24 Input SCB	Number of 16 Input SCB
PSS 1	11	311	1,828 MW	2	19
PSS 2	12	311	1,828 MW	3	18
PSS 3	13	306	1,821 MW	5	14

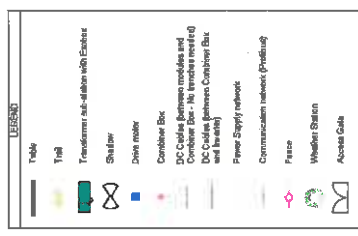
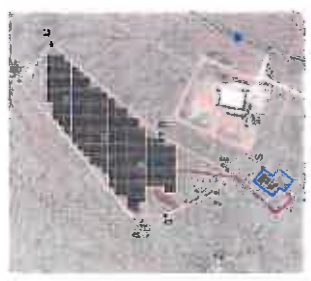
SUMMARY

Name	Total Length
DC String Bus Length	21,762 m
DC to Inverter DC Cable Bus Length	9,828 m
Inverter Power Supply	1,785 m
Inverter Protection	1,785 m
LV Trench Length	1,877 m
LV Trench Length	850 m
Roof Length	3,096 m
Fence Length	2,000 m
No. of 24 Input CB	16
No. of 16 Input CB	65
No. of Inverter Transformer Station (200k vads)	3
No. Weather Station	2
No. of Exhaust 12	36



GPS COORDINATES

Point	Coordinates
A	20°41'25.65" S
B	20°45'50.07" E
C	20°41'17.24" S
D	20°49'03.17" E
E	20°41'11.17" S
F	20°49'08.00" E
G	20°41'12.17" S
H	20°49'02.00" E
I	20°41'13.67" S
J	20°49'02.00" E
K	20°41'13.67" S
L	20°49'02.00" E
M	20°41'13.67" S
N	20°49'02.00" E
O	20°41'13.67" S
P	20°49'02.00" E



exosun
SOLAR PANELS

SOLAR PV SYSTEMS
DESIGN, INSTALLATION, MAINTENANCE, REPAIRS
FOR RESIDENTIAL, COMMERCIAL, INDUSTRIAL, AGRICULTURAL
AND RURAL AREAS

KEREN Energy Keremoss (Pty) Ltd
201250598607
SITE LAYOUT

Revision	Description	Drawn by	Checked by	Approved by	Date
A	ISSUED FOR INFORMATION	PM	CF	PM	2016/02/02

Reference Drawings	Drawings	Revision	Revision Information

Approval	Checked by	Drawn	Date
Engineer	CF	PM	2016/02/02
Approver	CF	PM	2016/02/02

Scale	N.T.S	Proj. Sta.	Sheet No.
			01