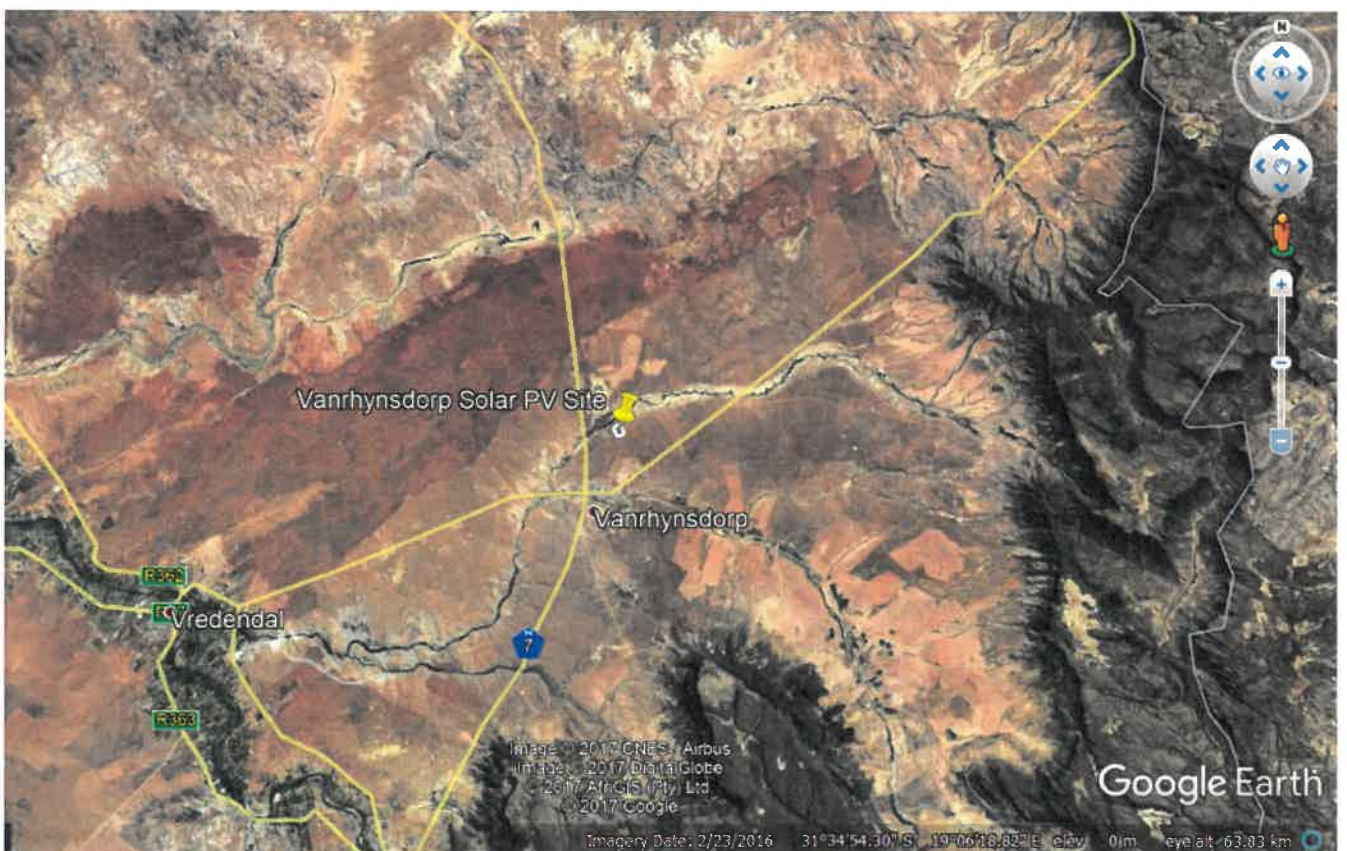
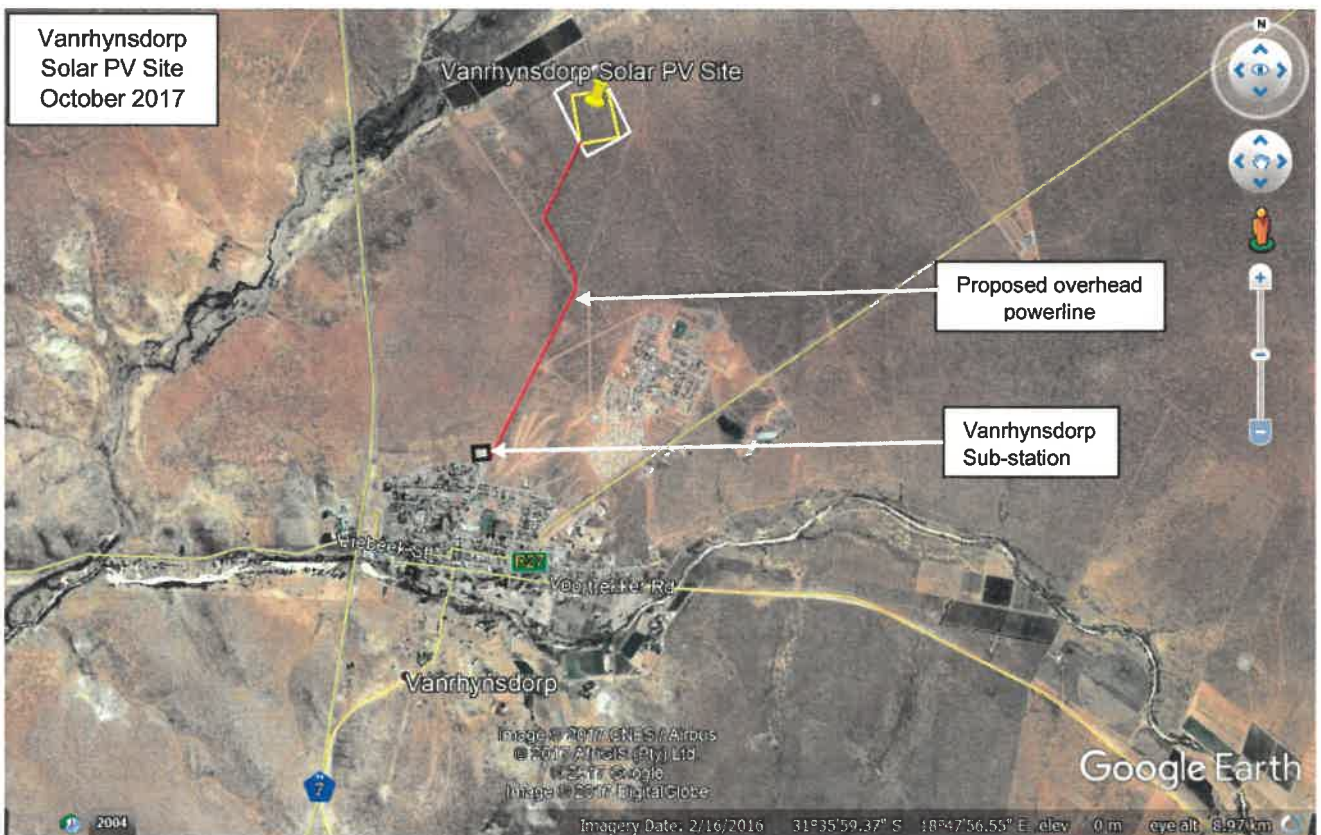
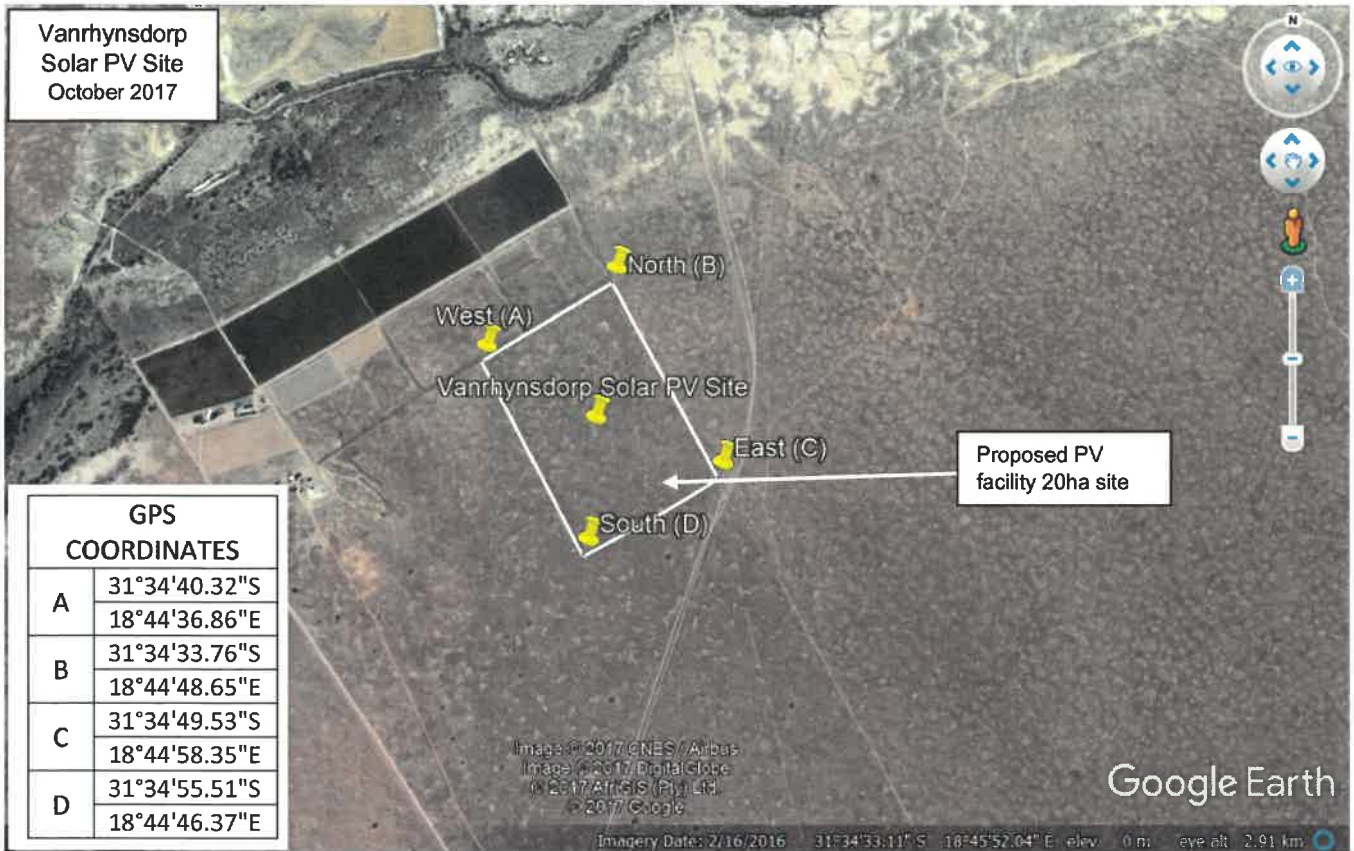


## **Appendix A: Maps**

## **Appendix A1: Locality Maps**

## Appendix A: Locality Maps





Proposed Overhead power line for tie-in to Eskom's Vanrhynsdorp substation indicated in red. Total 20ha proposed site indicated with white outline. Actual 10ha of solar PV panel layout area, within total 20ha site, indicated with yellow outline.

## **Appendix A2: Layout Plan/Map**

01 02 03 04 05 06 07 08 09 10 11 12 13 14 15 16 17 18 19 20 21 22 23 24 25 26 27 28 29 30 31 32 33 34 35 36 37 38 39 40 41 42 43 44 45 46 47 48 49 50 51 52 53 54 55 56 57 58 59 60 61 62 63 64 65 66

**PLANT SUMMARY**

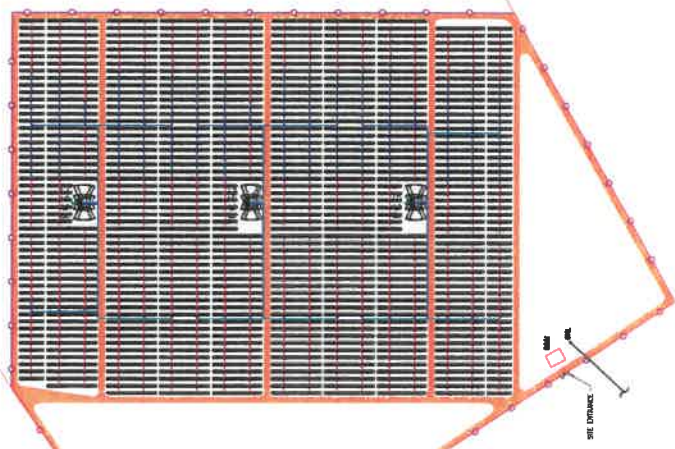
Name	Number of tables	Power plant capacity	North Orientation	East/West Pitch	Pitch between table	G.C.R	Table	Number of modules per table	Module capacity	Capacity per table	Number of strings per table
Block 02	607	6,307 MWp	048°	0.68 m	1 m, 2 m, 3 m	28.08 m	32x16m	20	240 kWp	4,800 kWp	1

**BLOCK SUMMARY**

Power Conversion Station	Number of Exotrack Hz	Number of Tables	Power Capacity	Number of 24 Input SCB	Number of 16 Input SCB
PCS 1	12	308	1,908 MWp	7	10
PCS 2	12	311	1,928 MWp	7	10
PCS 3	12	308	1,908 MWp	7	10

**SUMMARY**

Name	Total Length
DC String Bus Length	26142 m
CB to Inverter DC Cable Run Length	7730 m
Inverter Power Supply	1844 m
Inverter Protection	1844 m
LV Trench Length	1330 m
HM Trench Length	600 m
Road Length	3412 m
Fence Length	1800 m
No. of 24 Input CB	21
No. of 16 Input CB	30
No. of Inverter Transformer Stations (HT/MV each)	3
No. Weather Stations	2
No. of Endsect Hz	36
OTL Length	2000m

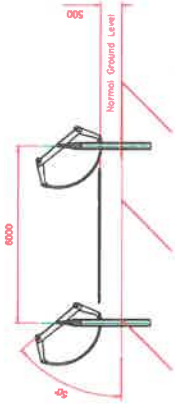


**CPS COORDINATES**

Point	X (m)	Y (m)
A	3174748.22	5184423.37
B	3174748.22	5184423.37
C	3174748.22	5184423.37
D	3174748.22	5184423.37

**LEGEND**

- Table
- Trail
- Transformer sub-station with enclosure
- Shadow
- Drive motor
- Combiner Box
- DC Cable (between modules and Combiner Box - No trench needed)
- DC Cable (between Combiner Box and Inverter)
- Power Supply network
- Communication network (Fiber)
- Fence
- Weather Station
- Access Gate



**exosun**  
PROUDLY PRODUCED IN SOUTH AFRICA

ISSUED FOR INFORMATION

Revision: A

Drawn: CUF

Checked: CUF

Approved: CUF

Date: 2018/04/20

Scale: N.T.S.

ROMA Energy VanRhynsdorp (Pty) Ltd  
201220387807  
SITE LAYOUT

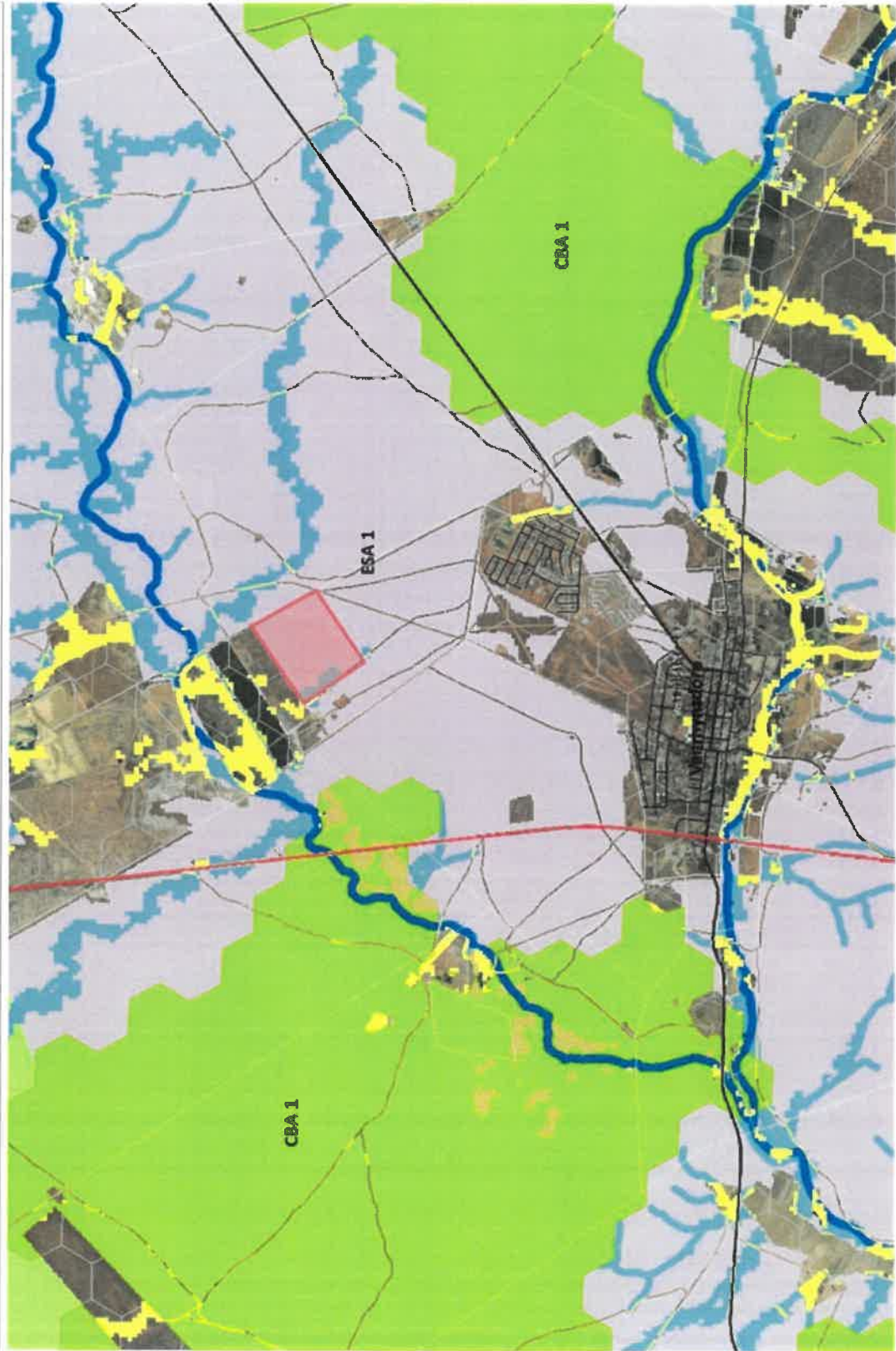
Vendor Drawing No. E0028-K2E-LAY-VRD

Sheet 01 of A

## **Appendix A3: Sensitivity Map/s**

**Vanrhynsdorp Solar**

**Description**  
Western Cape Biodiversity Spatial Plan (Matziliansa Municipality)



- Legend**
- National roads
  - Secondary roads
  - ARTERIAL ROUTE
  - ROADWAY
  - MINOR ROADS
  - Minor roads
  - Railroads
  - Local municipalities 2011
  - Towns
  - International borders
  - Provincial borders
  - District municipality
  - Local municipalities
  - Farm boundaries
  - Matziliansa CBA1
  - Matziliansa CBA2
  - Matziliansa ESA1
  - Matziliansa ESA2
  - Matziliansa ESA3
  - Matziliansa ESA4
  - Matziliansa ESA5

1:36 112



WGS\_1984\_Web\_Mercator\_Auxiliary\_Sphere  
© Lulufede Geographics Group Ltd.

This map is a user generated static output from an internet mapping site and is for reference only. Data layers that appear on this map may or may not be accurate, current, or otherwise reliable.

THIS MAP IS NOT TO BE USED FOR NAVIGATION