

Proposed setbackline

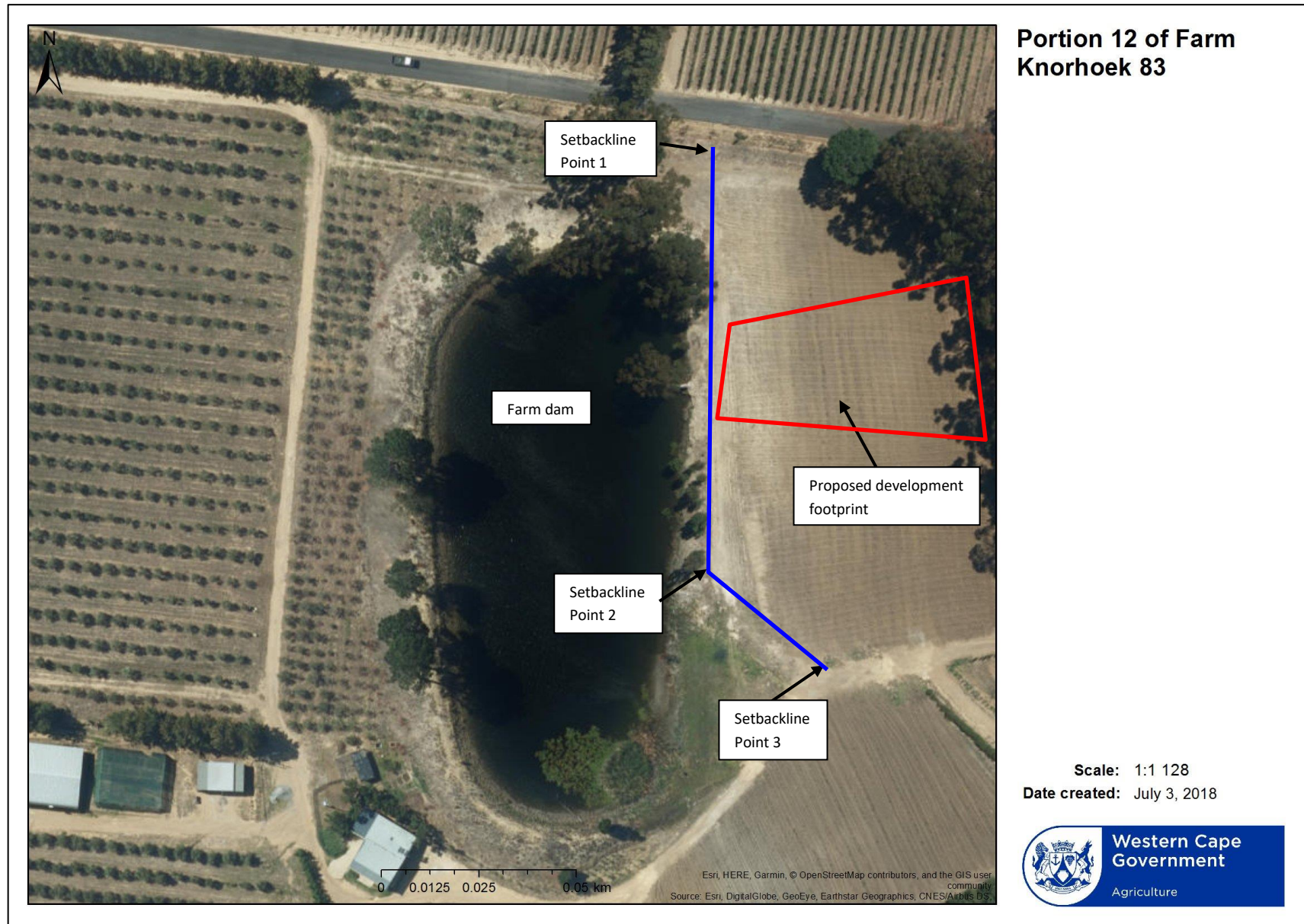


Figure 1. The approximate location of the development footprint is indicated by the red polygon and the proposed Ad-Hoc Setbackline is indicated by the blue line

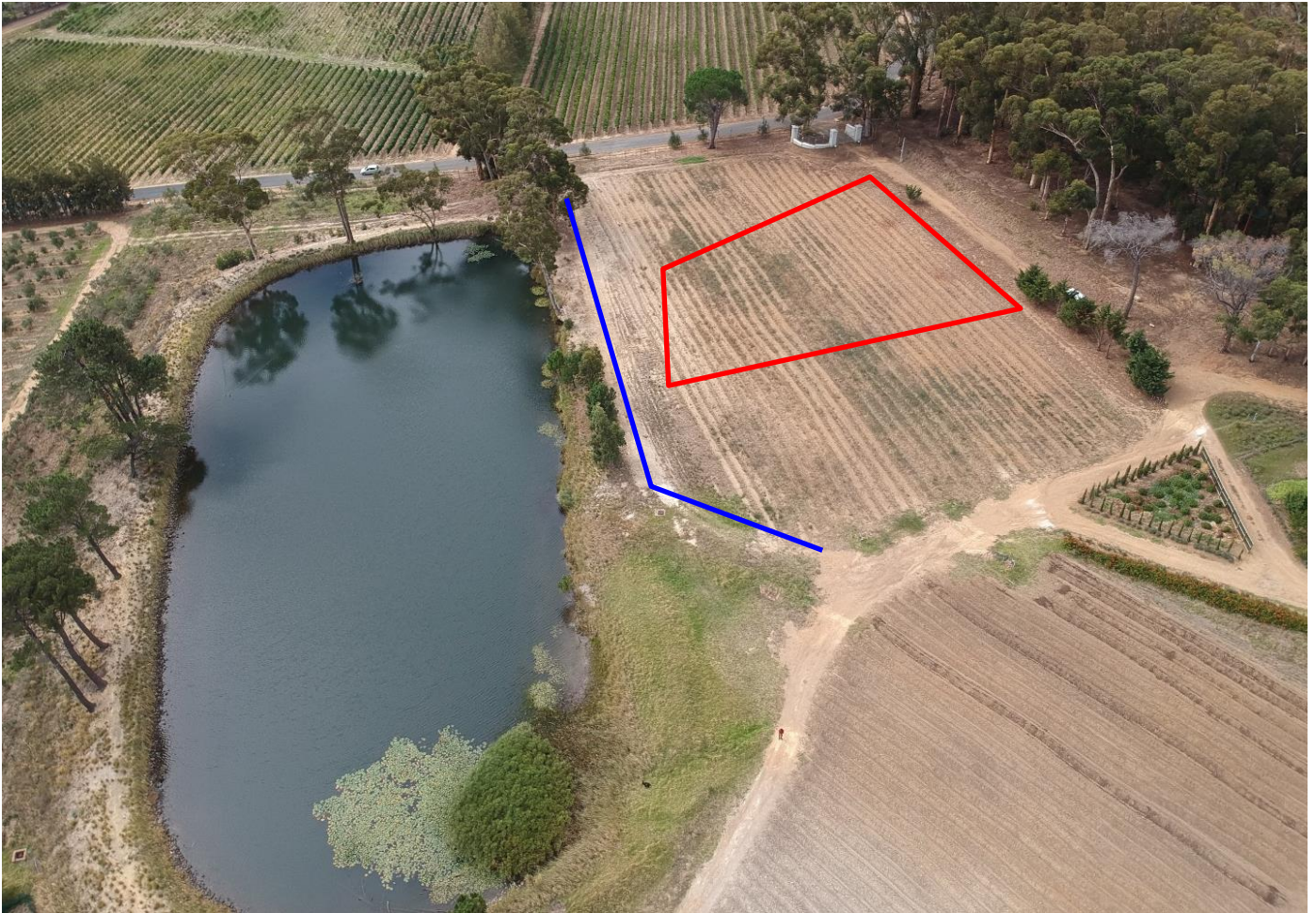


Figure 2. Photo of the existing site, with the approximate location development footprint indicated by the red polygon. The Proposed Ad-Hoc Setbackline is indicated by the blue line

Site co-ordinates for the proposed setbacklines

Setbackline:

|          |                  |                 |
|----------|------------------|-----------------|
| Point 1: | 34° 06' 25.00" S | 18° 56' 03.39"E |
| Point 2: | 34° 06' 27.94" S | 18° 56' 09.64"E |
| Point 3: | 34° 06' 28.48" S | 18° 56' 10.43"E |