

**SITE PHOTOGRAPHS: PROPOSED 30M HIGH TELECOMMUNICATIONS MAST ON PORTION 108 OF FARM DOORNRIVIER NO. 369, AAN DE DOORNS, WESTERN CAPE - 31 MAY 2018**



Figure 1: A view of the site (red arrow), located adjacent to a blue gum tree. Looking in a western direction.



Figure 2: A view of the site (red arrow), located adjacent to a blue gum tree. Looking in a south-western direction.

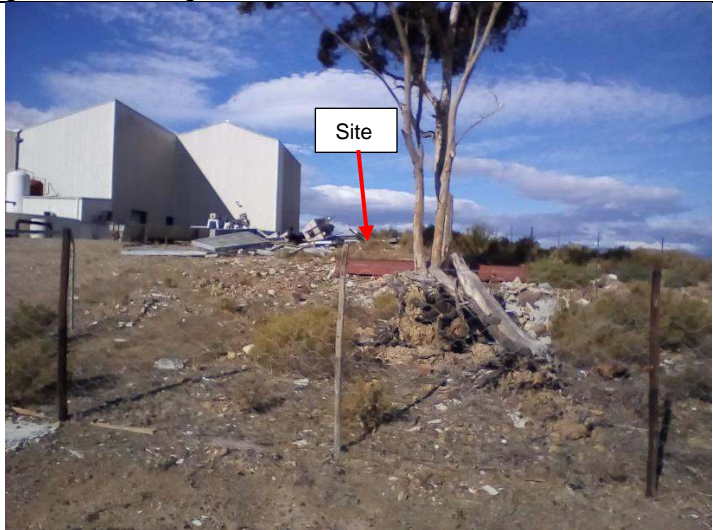


Figure 3: A view of the site (red arrow), located adjacent to a blue gum tree. Looking in a south-eastern direction.



Figure 4: A view of wine cellar located south-east of the site. Looking in an eastern direction.



Figure 5: A view of the site (red arrow) as viewed from the wine cellar. Looking in a western direction.

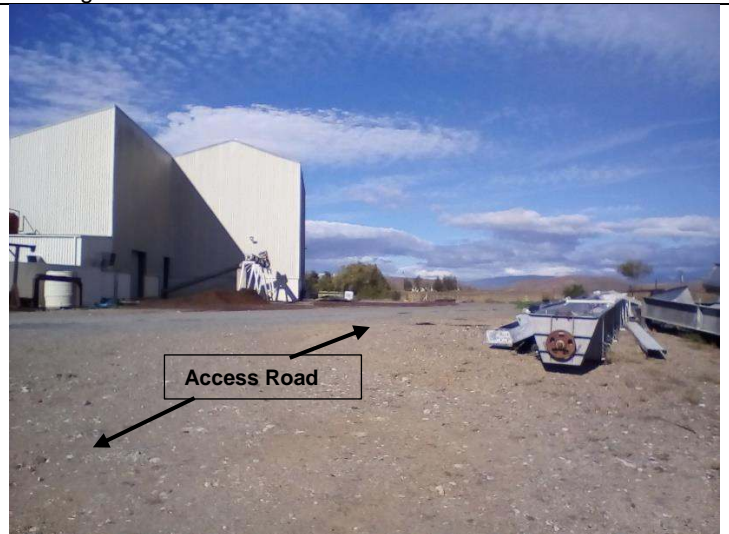


Figure 6: A view of the access road and wine cellar, looking in a south-eastern direction.