

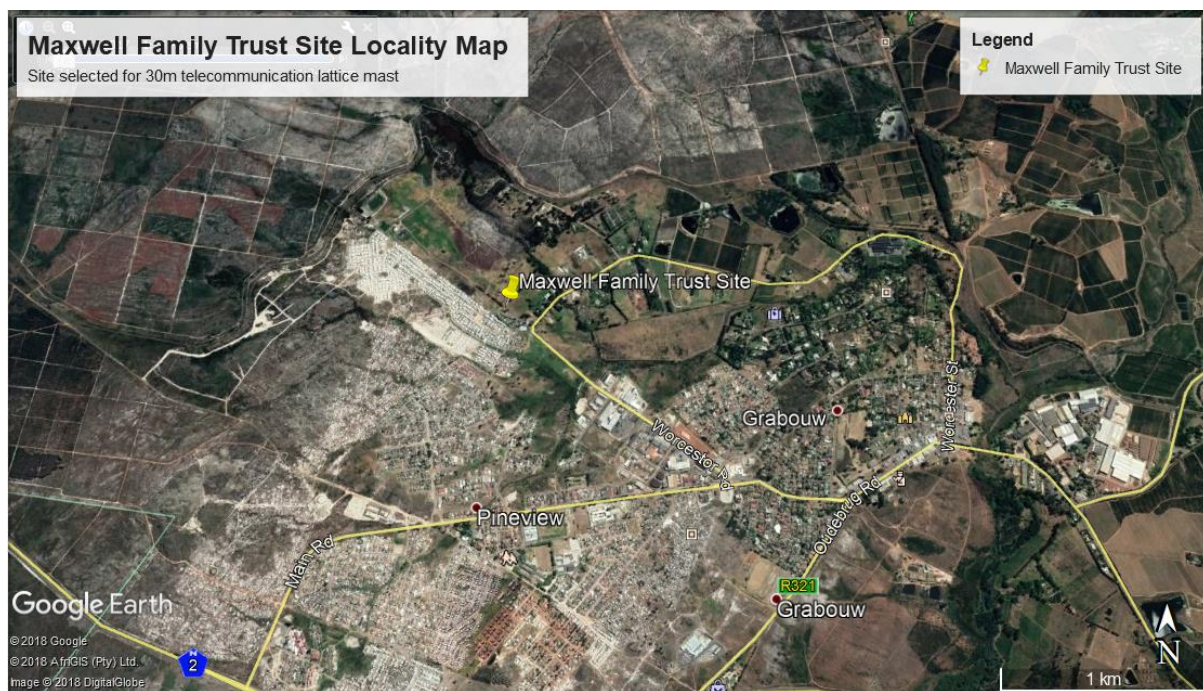
ATLAS TOWERS (PTY.) LTD: PROPOSED DEVELOPMENT OF A 30m HIGH TELECOMMUNICATIONS LATTICE MAST

Remainder of Portion 7 Farm Jagersvlakte No. 292,
Caldedon RD, Grabouw, Western Cape
(Maxwell Family Trust)

Pre-application Basic Assessment Report (Pre-app BAR) for comment

IN TERMS OF NEMA & THE EIA REGULATIONS 2014 (AS AMENDED)

OCTOBER 2018



DEADP REF: 16/3/3/6/7/1/E4/11/1222/18

**ATLAS TOWERS (PTY.) LTD: PROPOSED DEVELOPMENT OF
A 30m HIGH TELECOMMUNICATIONS LATTICE MAST**

Remainder of Portion 7 Farm Jagersvlakte No. 292, Caldedon RD,
Grabouw, Western Cape
(Maxwell Family Trust)

DEADP REF: 16/3/3/6/7/1/E4/11/1222/18

PREPARED FOR:

ATLAS TOWERS (PTY.) LTD:

First Floor, Omnipark Building

166 Main Road

Paarl

7620

Tel: (023) 870 1302/ 1368

PREPARED BY:

ENVIROAFRICA

P.O. Box 5367

Helderberg

7135

Tel: 021 – 851 1616

Fax: 086 – 512 0154