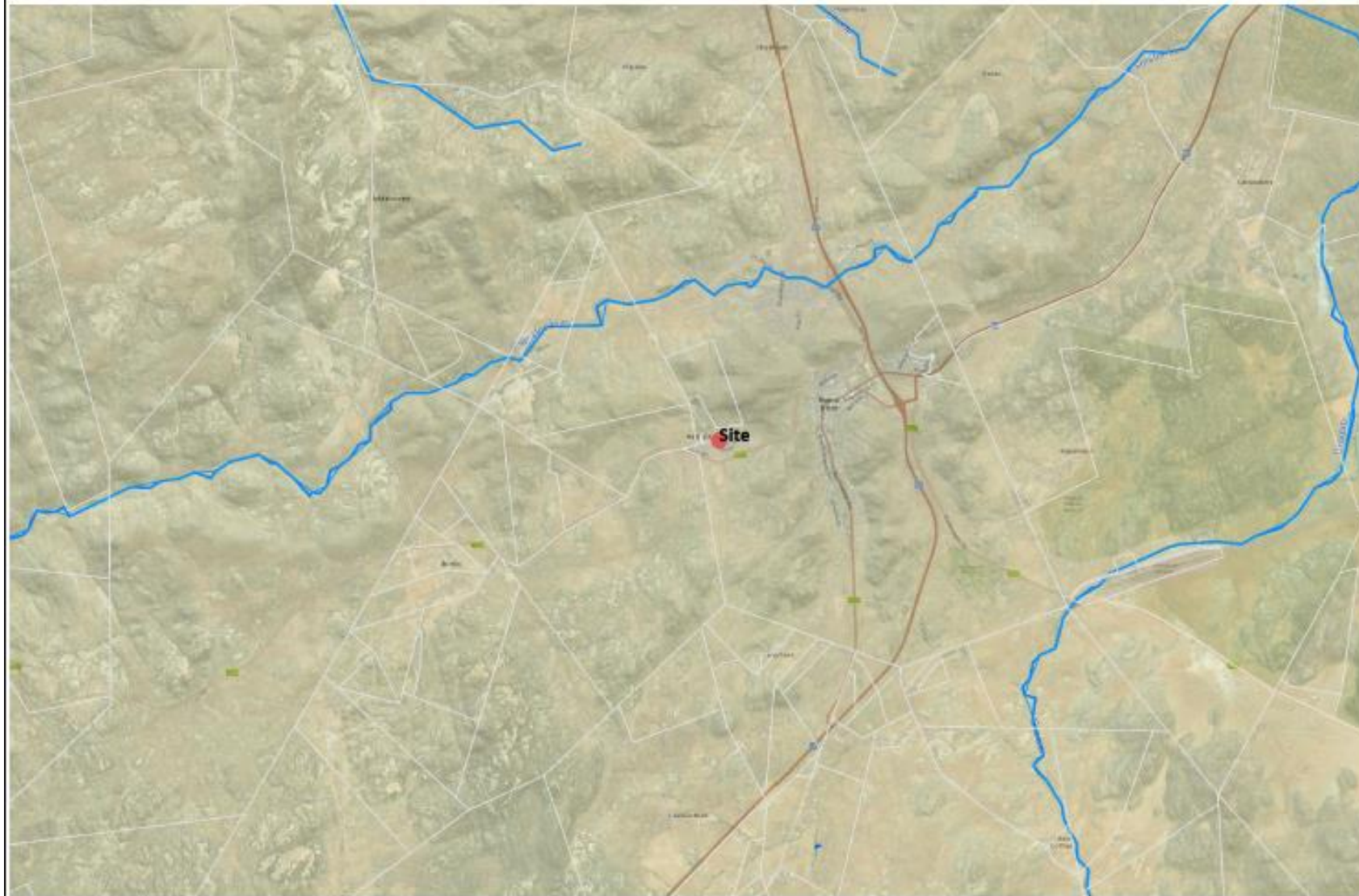


**Description**

Proposed development of a 25m high telecommunication mast on Erf 2820, Brisson Street, Matjieskloof, Springbok, Northern Cape



**Legend**

- Local municipalities
- Farm boundaries
- Rivers
- Water management areas
- Sub water management areas
- Fish points**
  - Fish sanctuary CRUM fish
  - Fish sanctuary other fish
- Wetland cluster**
- NFEPA rivers**
  - 1
  - 5
  - 10
- Free flowing rivers**
- NFEPA river- Flagship**
  - Rivers
  - Flagships
- National wetlands map 4 (NFEPA wetland m - Estuaries)
- Wetland NFEPA wetlands map
- Wetland and estuary FFA
- National wetlands map 4 (NFEPA wetland m - classification)**
  - Slope: Steep
  - Slope: Valleyhead steep
  - Slope: Depression

1: 72 224



3,7 0 1,83 3,7 Kilometers

WGS\_1984\_Web\_Mercator\_Auxiliary\_Sphere  
© Latitude Geographics Group Ltd.

This map is a user generated static output from an internet mapping site and is for reference only. Data layers that appear on this map may or may not be accurate, current, or otherwise reliable.

THIS MAP IS NOT TO BE USED FOR NAVIGATION



Description

Proposed development of a 25m high telecommunications mast on Erf 2820, Matjieskloof, Springbok.

Legend

National Vegetation Map 2012 beta 2

- Rf1 Rooiberg Sandstone Fynbos
- Rf2 Goukamma Sandstone Fynbos
- Rf3 Oribis Sandstone Fynbos
- Rf4 Cedarberg Sandstone Fynbos
- Rf5 Wilderhoek Sandstone Fynbos
- Rf6 Flakberg Sandstone Fynbos
- Rf7 North Ha Sandstone Fynbos
- Rf8 South Ha Sandstone Fynbos
- Rf9 Peninsula Sandstone Fynbos
- Rf10 Hareeps Sandstone Fynbos
- Rf11 Rogeberg Sandstone Fynbos
- Rf12 Overberg Sandstone Fynbos
- Rf13 North Sonderend Sandstone Fynbos
- Rf14 South Sonderend Sandstone Fynbos
- Rf15 North Langeberg Sandstone Fynbos
- Rf16 South Langeberg Sandstone Fynbos
- Rf17 Pofberg Sandstone Fynbos
- Rf18 North Outeniqua Sandstone Fynbos
- Rf19 South Outeniqua Sandstone Fynbos
- Rf20 Tablemount Sandstone Fynbos
- Rf21 North Rooiberg Sandstone Fynbos
- Rf22 South Rooiberg Sandstone Fynbos
- Rf23 North Swartberg Sandstone Fynbos
- Rf24 South Swartberg Sandstone Fynbos
- Rf25 North Kammaaske Sandstone Fynbos

1: 36 112

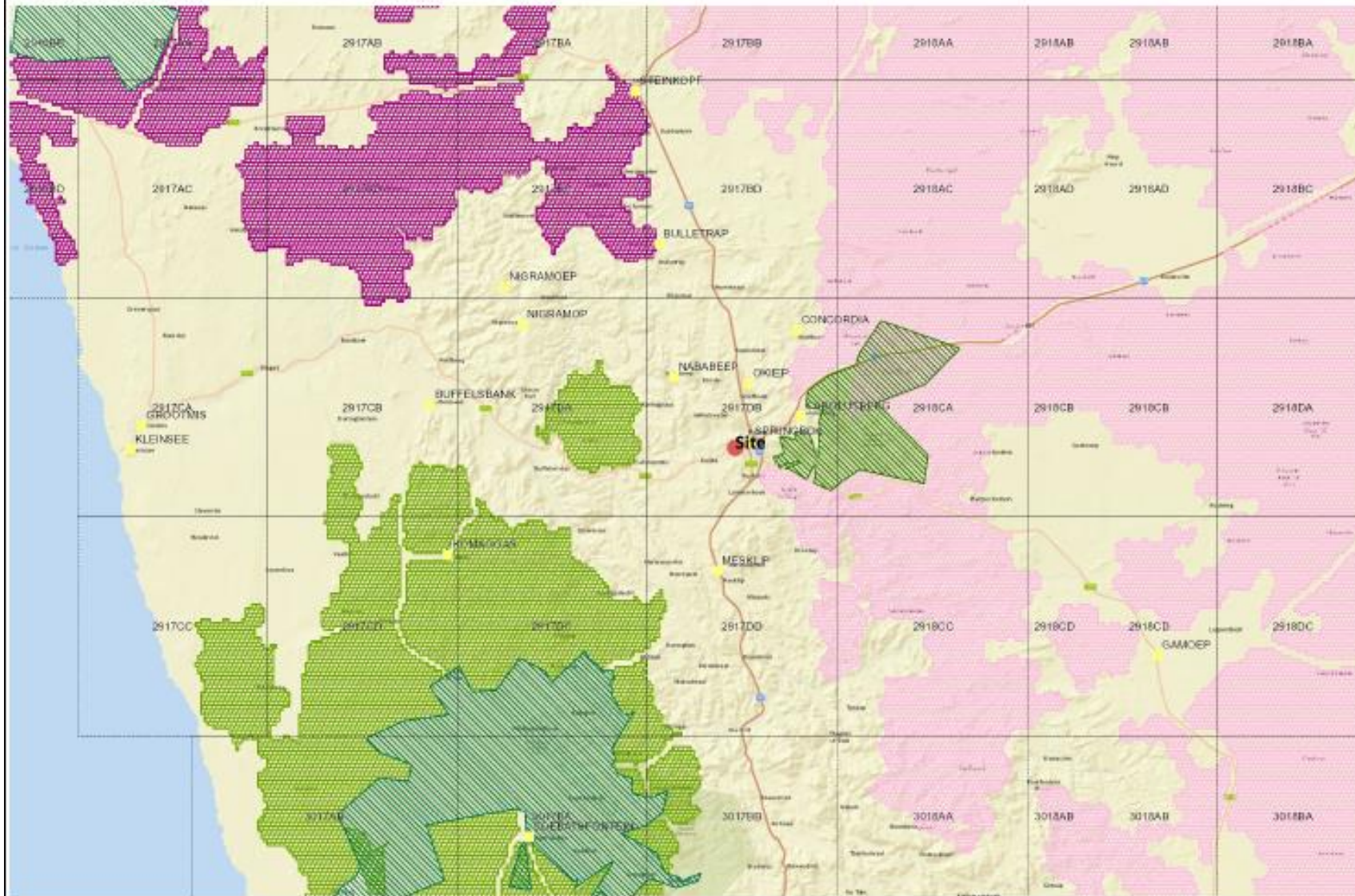


WGS\_1984\_Web\_Mercator\_Auxiliary\_Sphere  
© Latitude Geographics Group Ltd.

This map is a user generated static output from an internet mapping site and is for reference only. Data layers that appear on this map may or may not be accurate, current, or otherwise reliable.

THIS MAP IS NOT TO BE USED FOR NAVIGATION

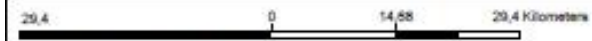




**Description**  
Proposed development of a 25m high telecommunication mast on Erf 2820, Matjieskloof, Springbok

- Legend**
- Quarter-degree grid squares
  - South Africa town points
  - National parks (NBA 2011)
  - Formal protected areas (NBA 2011)
  - Informal protected areas (NPAES)
  - Marine Protected Areas MPAs (NBA 2011)
  - NPAES focus areas
    - all other vegetation
    - Agulhas
    - Arnots Tarkent
    - Baviaans Addo
    - Blyden Kru
    - Blobeg Langer
    - Boland Koggeberg
    - Cederberg Roesfontein
    - Crook Limbore Fynbos
    - Dikwatsberg and middels
    - Eastern Fynbos
    - Eastern Valley Bushveld
    - Free State Highveld Grasslands
    - Garden Route
    - Garden
    - Kamiesberg Bushland and Agulhas
    - Karoo Rangeland Grassland
    - Kgalagadi National Park
    - Koornveld Herten

1: 577 791



WGS\_1984\_Web\_Mercator\_Auxiliary\_Sphere  
© Latitude Geographica Group Ltd

This map is a user generated static output from an internet mapping site and is for reference only. Data layers that appear on this map may or may not be accurate, current, or otherwise reliable.

THIS MAP IS NOT TO BE USED FOR NAVIGATION