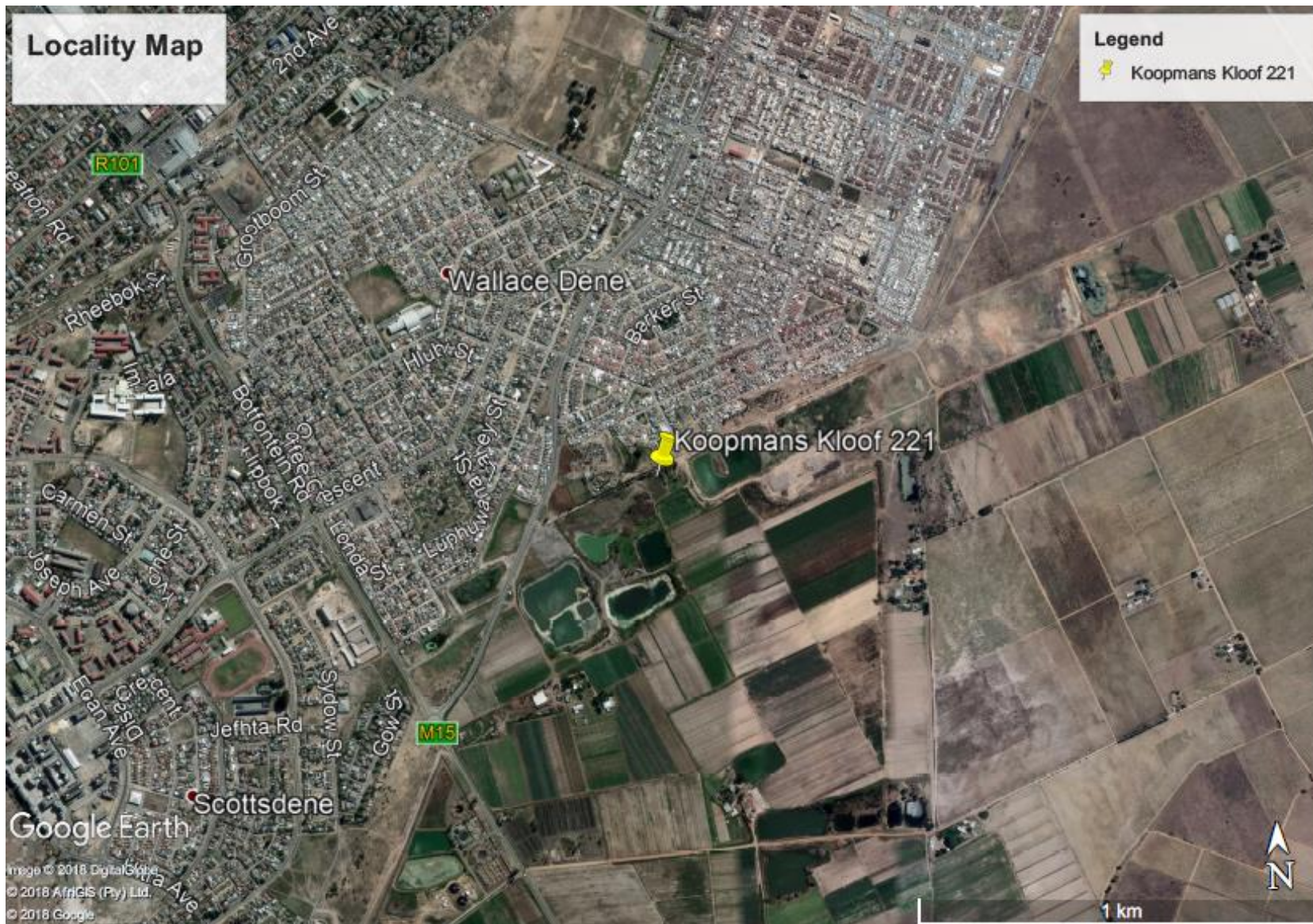


**PROPOSED DEVELOPMENT OF A 30M HIGH TELECOMMUNICATION MAST ON PORTION 17 OF FARM
KOOPMANS KLOOF NO. 221, KRAAIFONTEIN, WESTERN CAPE**



SITE CO-ORDINATES

33° 51' 46.88" S
18° 44' 19.41" E



PROPOSED SITE

ENVIRO AFRICA REF:

1214

October 2018

