

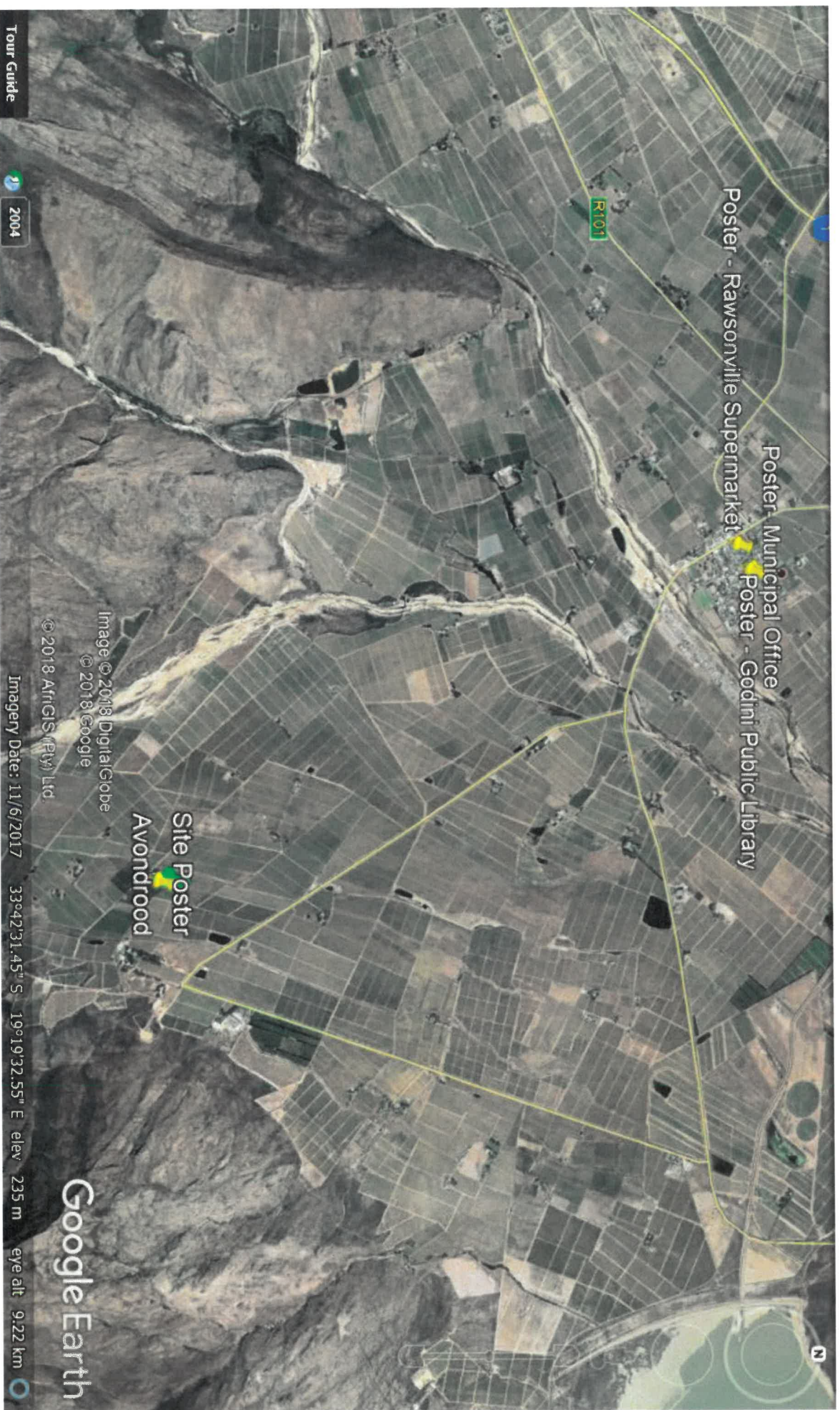
PPP: MAILDROP LIST & PLACEMENT OF POSTERS

PROJECT: AVONAROOD	AREA:	RAWSONVILLE
ADDRESS FARM AVONAROOD NO. 778, RAWSONVILLE		
CONTACT PERSON EMILE ESQUIRE		
DATE:	31/05/18	DONE BY: EMILE ESQUIRE

POSTERS

	ADDRESS	DESCRIPTIVE NOTES
1	BVM Municipal Office :	17 Le Seur Street, Rawsonville. (Notice Board)
2	Goudini Public Library :	17 Le Seur Street, Rawsonville (Notice Board)
3	Rawsonville Supermarket :	Van Riebeeck Street, Rawsonville (Placed on window,
4	A2 Poster on site along the	PROPERTY FENCE. MAILDROP

	ADDRESS:	DESCRIPTIVE NOTES
	Street no. & name	(Owner details, property description ect.)
1	Municipal Office :	17 Le Seur Street, Rawsonville
2	Goudini Public Library :	17 Le Seur Street, Rawsonville
3	Rawsonville Supermarket. :	Van Riebeeck Street, Rawsonville
4	UNIWINES CELLAR (Daschbosch) :	Louwshoek Voorsorg Road
5	Wettevrede NGK Primary School :	Louwshoek Voorsorg Road
6	Farm Wettevrede :	Boontjiesrivier Road, Rawsonville
7	Dasbos Rivier Farm :	Boontjiesrivier Road, Rawsonville
8	Farm Louwshoek :	Louwshoek Voorsorg Road, Rawsonville
9	Platdrif Farm :	Boontjiesrivier Road, Rawsonville
10	Farm Merweville :	Boontjiesrivier Road, Rawsonville
11	A3 POSTER PLACED AT BVM MUNICIPAL OFFICE AT	
12	35 Baling Street, Worcester.	
13		
14		



Poster - Rawsonville Supermarket

Poster - Municipal Office

Poster - Godini Public Library

R101

Site Poster
Avondrood

Image © 2018 DigitalGlobe
© 2018 Google

© 2018 AfrGIS (Pty) Ltd.

Imagery Date: 11/6/2017

33°42'31.45" S 19°19'32.55" E elev 235 m

eye alt 9.22 km

Google Earth

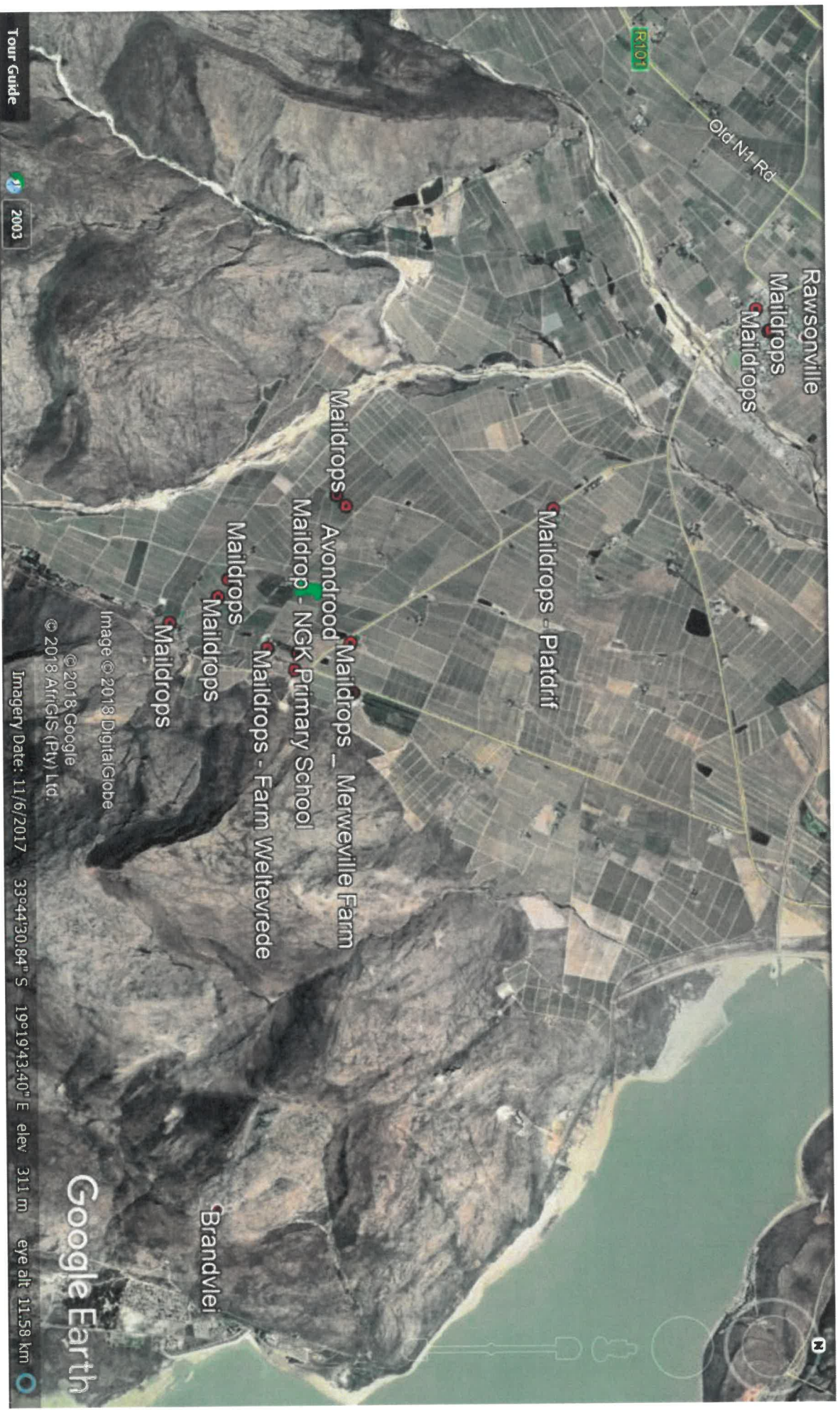
Tour Guide



2004

Legend

Green Placemark : The site
Yellow Placemarks : Posters



Legend

Green Placemark : The site

Red Dot : Mairdrops

POSTER PLACEMENT & MAILDROPS: PROPOSED DEVELOPMENT OF 25M HIGH TELECOMMUNICATION MAST, FARM NO. 778, AVONDROOD, RAWSONVILLE, WESTERN CAPE - 31 MAY 2018

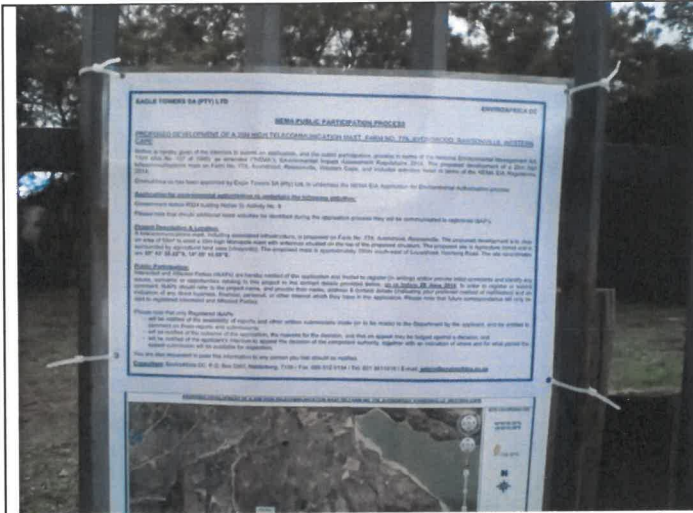


Figure 1: A2 poster placed against the fence immediately south-east of the site. Looking in an eastern direction.



Figure 2: A2 poster placed against the fence immediately south-east of the site. Looking in an eastern direction as viewed from the access road.



Figure 3: A2 poster placed against the fence immediately south-east of the site. Looking in an eastern direction as viewed from the access road.



Figure 4: A view of the proposed site, looking in a northern direction as viewed from the access road.

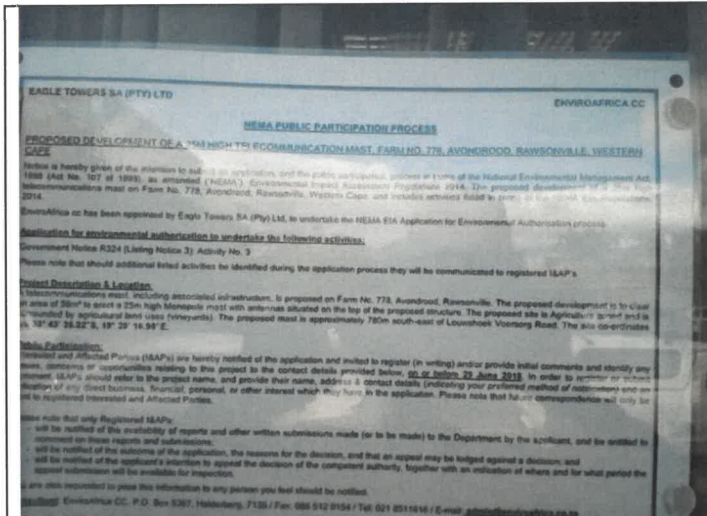


Figure 5: A3 poster placed on window inside the Municipal office at 35 Baring Street, Worcester.



Figure 6: A3 poster placed on window inside the Municipal office at 35 Baring Street, Worcester.



Figure 7: A3 poster placed on window inside the Municipal office at 35 Baring Street, Worcester. Looking from Baring Street towards the posters.

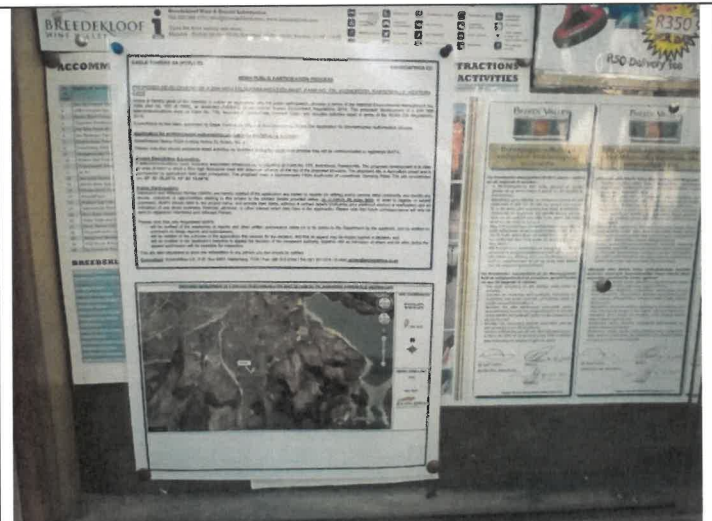


Figure 8: A3 poster placed on notice board at Godini Public Library situated at 17 Le Seur Street, Rawsonville.



Figure 9: A3 poster placed on notice board at Godini Public Library situated at 17 Le Seur Street, Rawsonville.



Figure 10: A3 poster placed on notice board at BVM municipal office situated at 17 Le Seur Street, Rawsonville.



Figure 11: A3 poster placed on notice board at BVM municipal office situated at 17 Le Seur Street, Rawsonville.

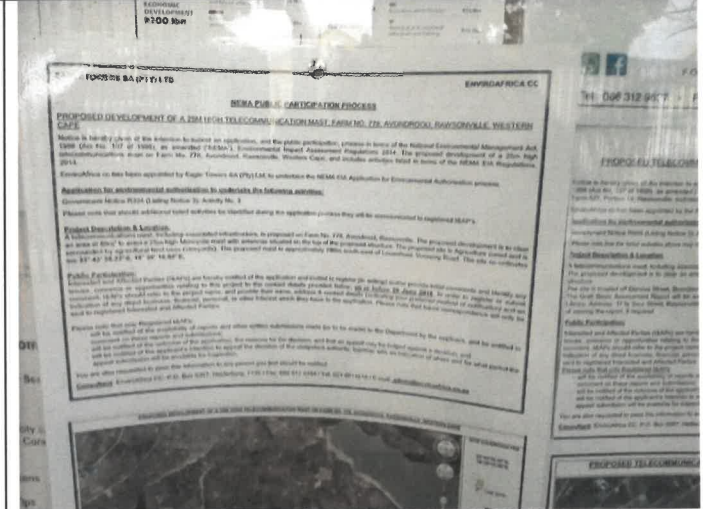


Figure 12: A3 poster placed on notice board at BVM municipal office situated at 17 Le Seur Street, Rawsonville.



Figure 13: A3 poster placed against the wall outside Rawsonville Supermarket, located along Van Riebeeek Street, Rawsonville.



Figure 14: A3 poster placed against the wall outside Rawsonville Supermarket, located along Van Riebeeek Street, Rawsonville.



Figure 15: Maildrops done at Farm Platdrif, Boontjiesrivier, Rawsonville.



Figure 16: Maildrops done at Farm Weltevrede.



Figure 17: Maildrop done at uniWines Vineyards, situated along Louwshoek Voorsorg Road.



Figure 18: Maildrops done at Weltevrede NGK Primary School, located along Louwshoek Voorsorg Road.



Figure 19: Maildrops done at Farm Weltevrede, located along Louwshoek Voorsorg Road.