

National Vegetation Map

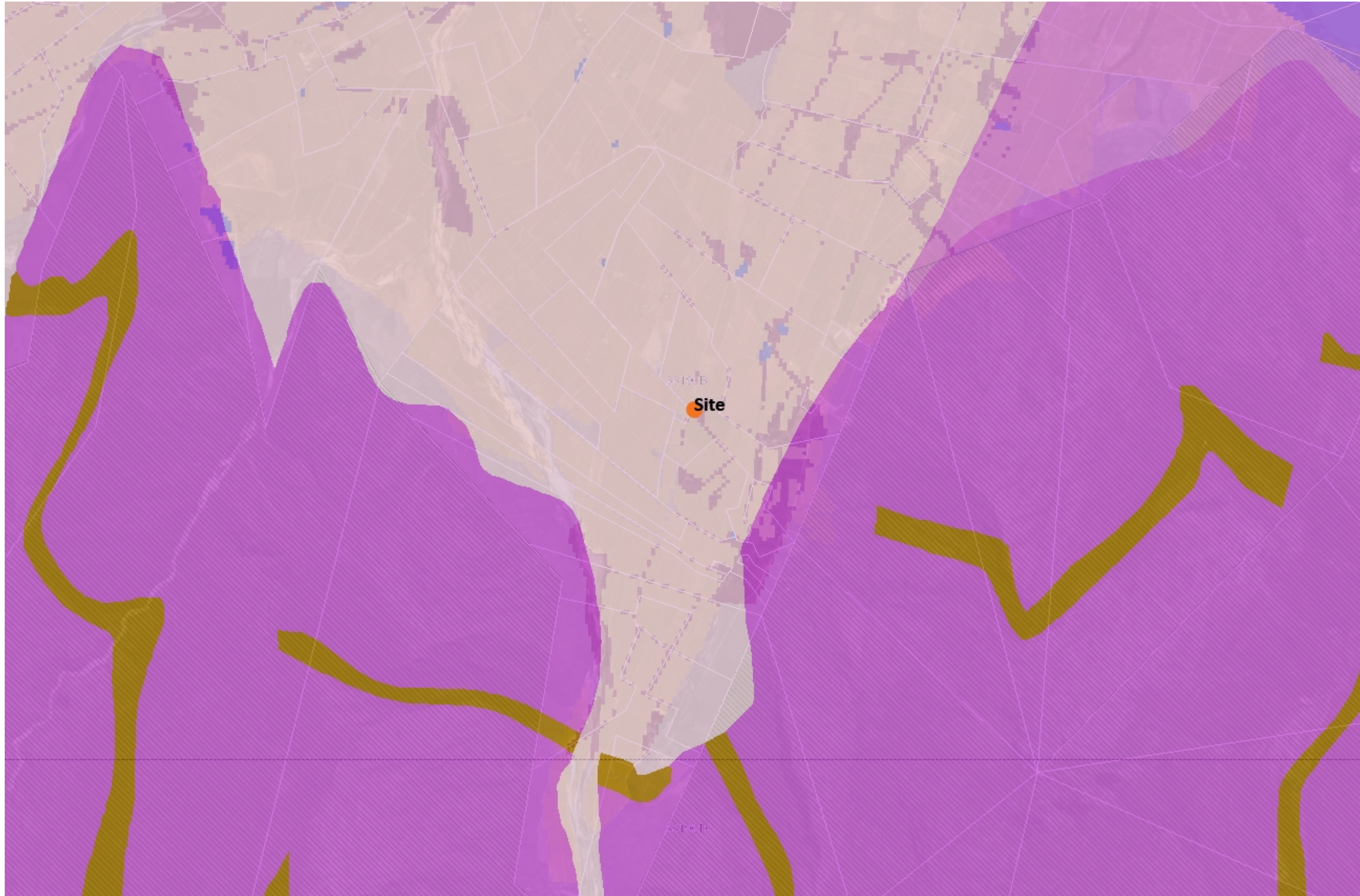
Description

The site would have been covered by Breede Alluvium Fynbos. However, there is no natural vegetation remaining on site.

Legend

National Vegetation Map 2012 beta 2

-  FFs 1 Bokkeveld Sandstone Fynbos
-  FFs 2 Graafwater Sandstone Fynbos
-  FFs 3 Olifants Sandstone Fynbos
-  FFs 4 Cederberg Sandstone Fynbos
-  FFs 5 Winterhoek Sandstone Fynbos
-  FFs 6 Piketberg Sandstone Fynbos
-  FFs 7 North Hex Sandstone Fynbos
-  FFs 8 South Hex Sandstone Fynbos
-  FFs 9 Peninsula Sandstone Fynbos
-  FFs 10 Hawequas Sandstone Fynbos
-  FFs 11 Kogelberg Sandstone Fynbos
-  FFs 12 Overberg Sandstone Fynbos
-  FFs 13 North Sonderend Sandstone Fynbos
-  FFs 14 South Sonderend Sandstone Fynbos
-  FFs 15 North Langeberg Sandstone Fynbos
-  FFs 16 South Langeberg Sandstone Fynbos
-  FFs 17 Potberg Sandstone Fynbos
-  FFs 18 North Outeniqua Sandstone Fynbos
-  FFs 19 South Outeniqua Sandstone Fynbos
-  FFs 20 Tsitsikamma Sandstone Fynbos
-  FFs 21 North Rooiberg Sandstone Fynbos
-  FFs 22 South Rooiberg Sandstone Fynbos
-  FFs 23 North Swartberg Sandstone Fynbos
-  FFs 24 South Swartberg Sandstone Fynbos
-  FFs 25 North Kammanassie Sandstone Fynbos
-  FFs 26 South Kammanassie Sandstone Fynbos



1: 36 112



1,8 0 0,92 1,8 Kilometers

