



# Biodiversity Overlay Map

## Legend

### BSP ESA: Restore

- ESA2: Restore from plantation or high density IAP
- ESA2: Restore from other land use
- ESA2: Restore where appropriate (CT)

### BSP ESA

- ESA: Aquatic
- ESA: Terrestrial

### BSP CBA: Degraded

- CBA2: Aquatic
- CBA2: Terrestrial
- Other Natural Area

### BSP CBA

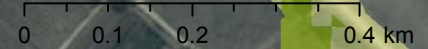
- CBA: Terrestrial
- CBA: Terrestrial (CT)
- CBA: Forest
- CBA: River
- CBA: Estuary
- CBA: Wetland
- CBA: Aquatic (CT)

Scale: 1:9 028

Date created: July 2, 2018



**Western Cape Government**  
Agriculture



Esri, HERE, Garmin, © OpenStreetMap contributors, and the GIS user community  
Source: Esri, DigitalGlobe, GeoEye, Earthstar Geographics, CNES/Airbus DS,