

Figure 1: Critical Biodiversity Area (CBA) and Ecological Significant Area (ESA) Map of Calcutta Farm No. 29, Stellenbosch Municipality
 Critical Biodiversity Area 2 – degraded areas but with potential for rehabilitation indicated in brown. Ecological Significant Area 2 – aquatic ecological support areas indicated in yellow. Total property shaded light blue indicates that there are large areas of known degraded/alien infested land available for possible rehabilitation and development.

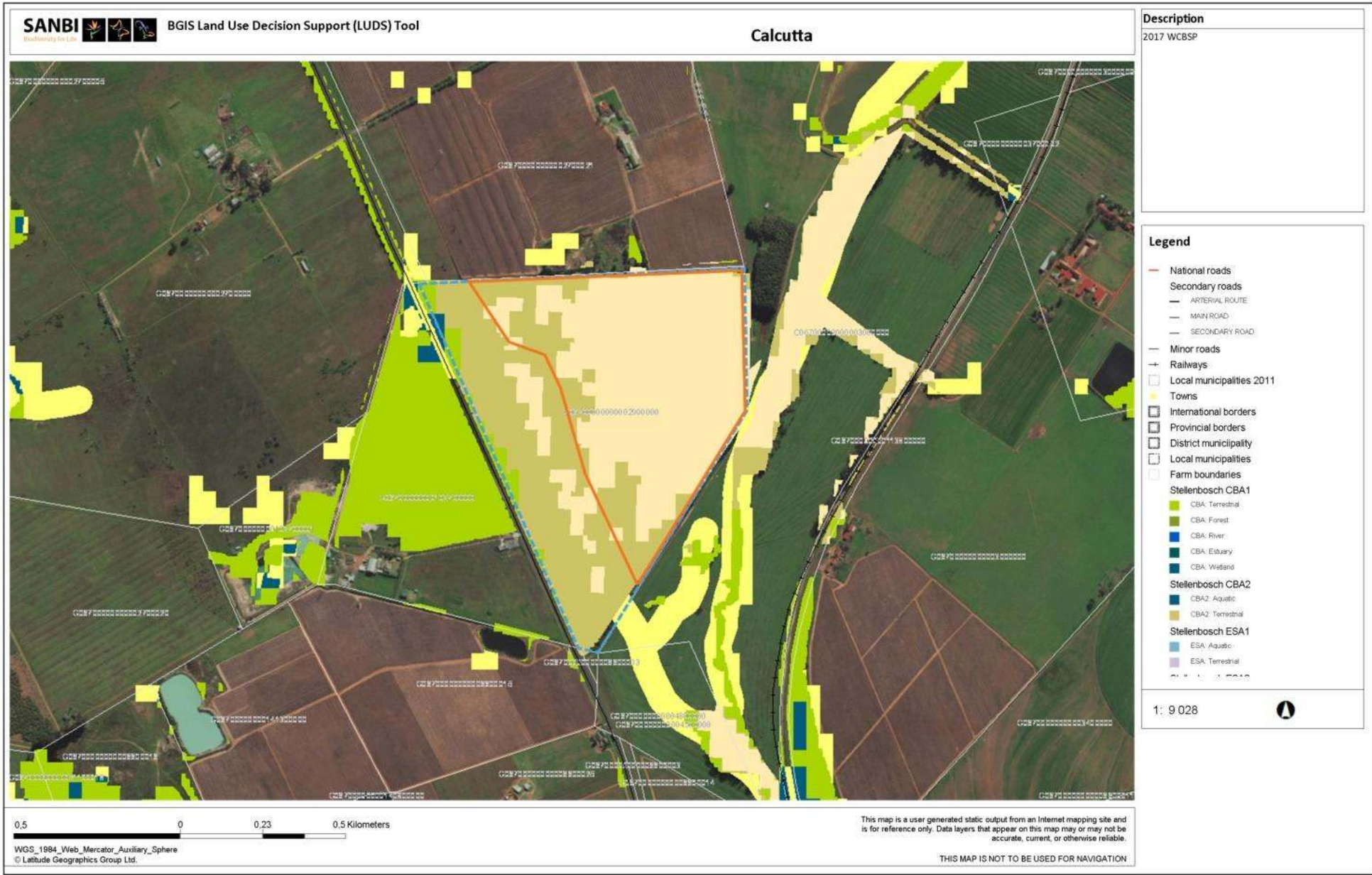


Figure 2: 2017 Western Cape Biodiversity Spatial Plan on remainder of Calcutta Farm No. 29, Stellenbosch Municipality



Biodiversity site inspection - ground-truthing of Western Cape Biodiversity Spatial Plan on Calcutta Farm No. 29

A physical site inspection showed that the whole of the property has been degraded as a result of dense stands of the alien tree *Eucalyptus*, but with *Acacia saligna* also prominent. Very few remaining natural plant species were observed but a small watercourse crosses the property from north to south along its western boundary. The area indicated in yellow above is also very degraded as a result of dense alien plant infestation but was marked separately because of its potential CBA status.