

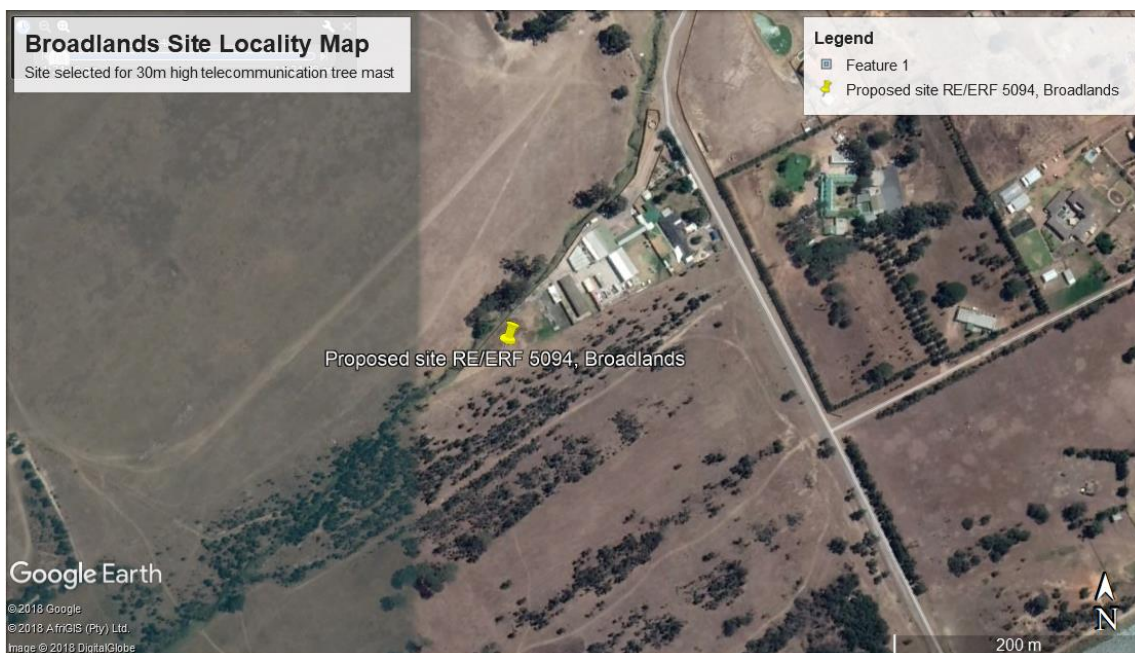
# ATLAS TOWERS (PTY.) LTD: PROPOSED DEVELOPMENT OF A 25m HIGH TELECOMMUNICATIONS TREE MAST

Remaining Extent Erf 5094, Broadlands, Strand, Western  
Cape

## Post-Application Basic Assessment Report (Post-App BAR) for comment

IN TERMS OF NEMA & THE EIA REGULATIONS 2014 (AS AMENDED)

December 2018



**DEADP REF: 16/3/3/6/7/1/A3/57/2136/18**

**ATLAS TOWERS (PTY.) LTD: PROPOSED DEVELOPMENT OF  
A 25m HIGH TELECOMMUNICATIONS TREE MAST**

Remaining Extent Erf 5094, Broadlands, Strand, Western Cape

**DEADP REF: 16/3/3/6/7/1/A3/57/2136/18**

**PREPARED FOR:  
ATLAS TOWERS (PTY.) LTD:**

**Cecilia Square  
100 Cecilia Street  
Paarl  
7620  
Tel: (023) 870 1302/ 1368**

**PREPARED BY:  
ENVIROAFRICA**

**P.O. Box 5367  
Helderberg  
7135  
Tel: 021 – 851 1616  
Fax: 086 – 512 0154**