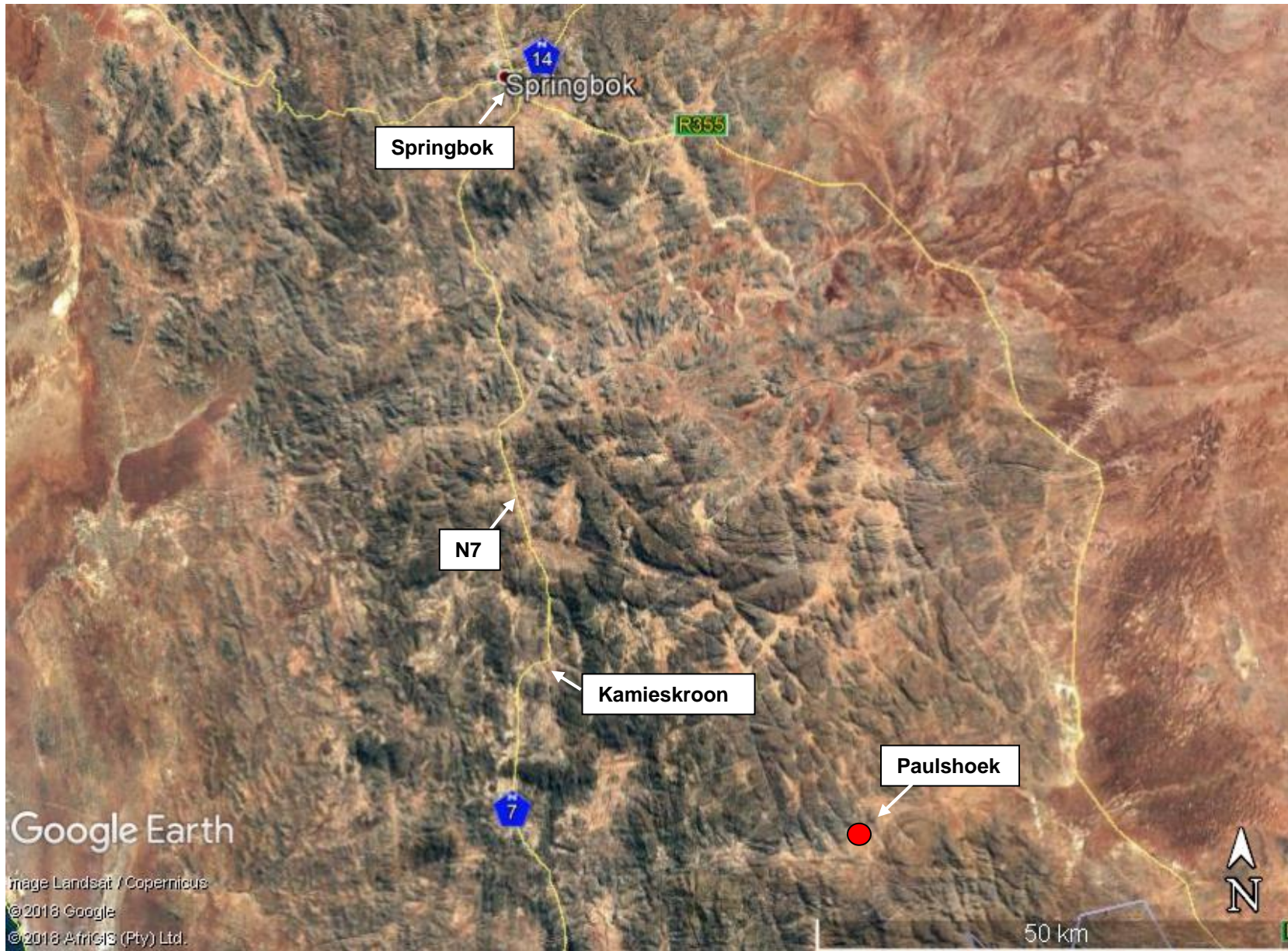


PROPOSED PAULSHOEK BULK WATER SUPPLY, KAMIESBERG LOCAL MUNICIPALITY



SITE CO-ORDINATES

30°22'33.40"S
18°15'01.39"E

 PROPOSED SITE

ENVIROAFRICA REF:

0731

January 2019



PROPOSED PAULSHOEK BULK WATER SUPPLY, KAMIESBERG LOCAL MUNICIPALITY



SITE CO-ORDINATES

30°22'33.40"S
18°15'01.39"E

 PROPOSED SITE

ENVIROAFRICA REF:

0731

January 2019

