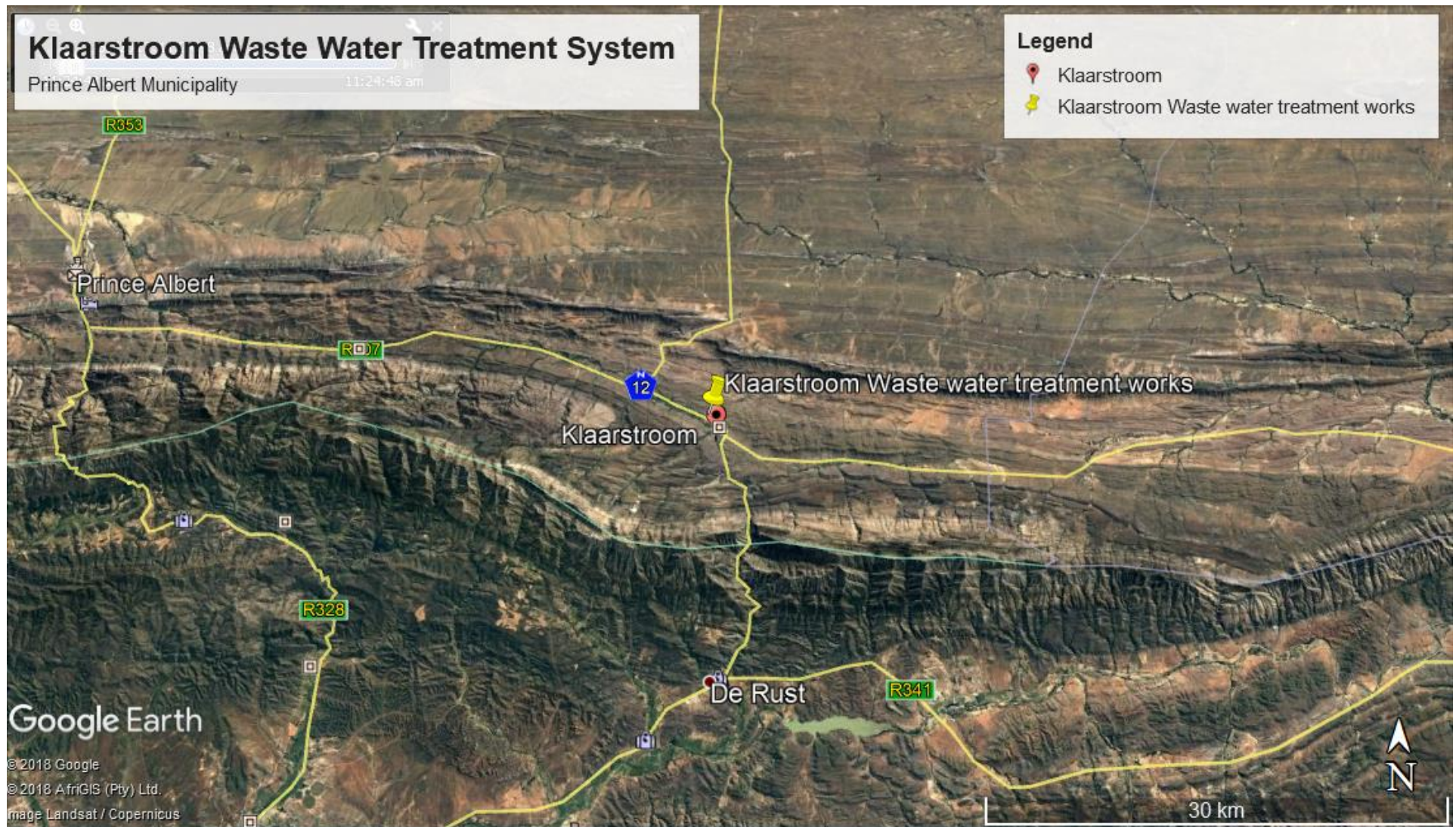
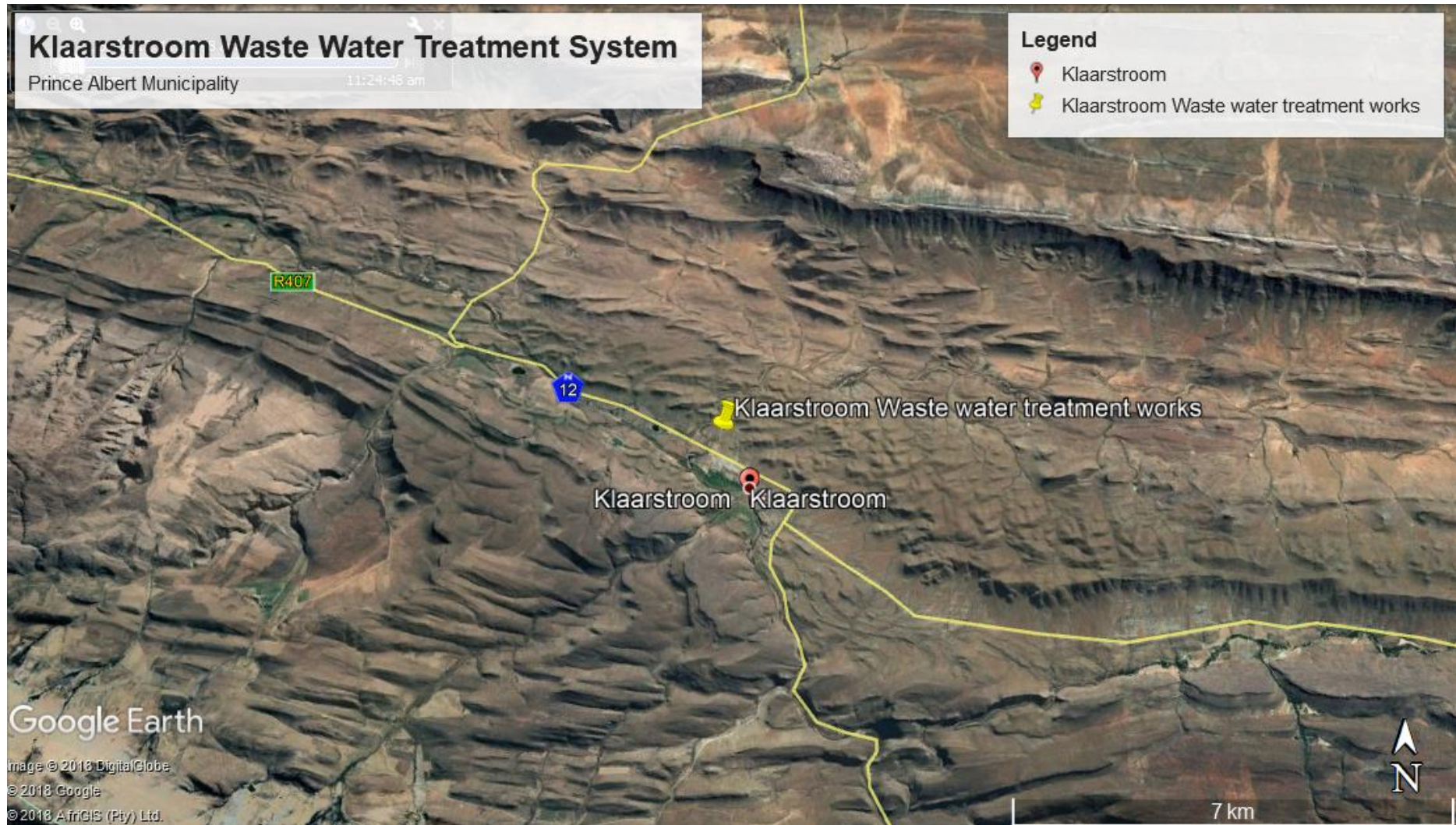


Appendix A_ Locality Map & Layout Plans



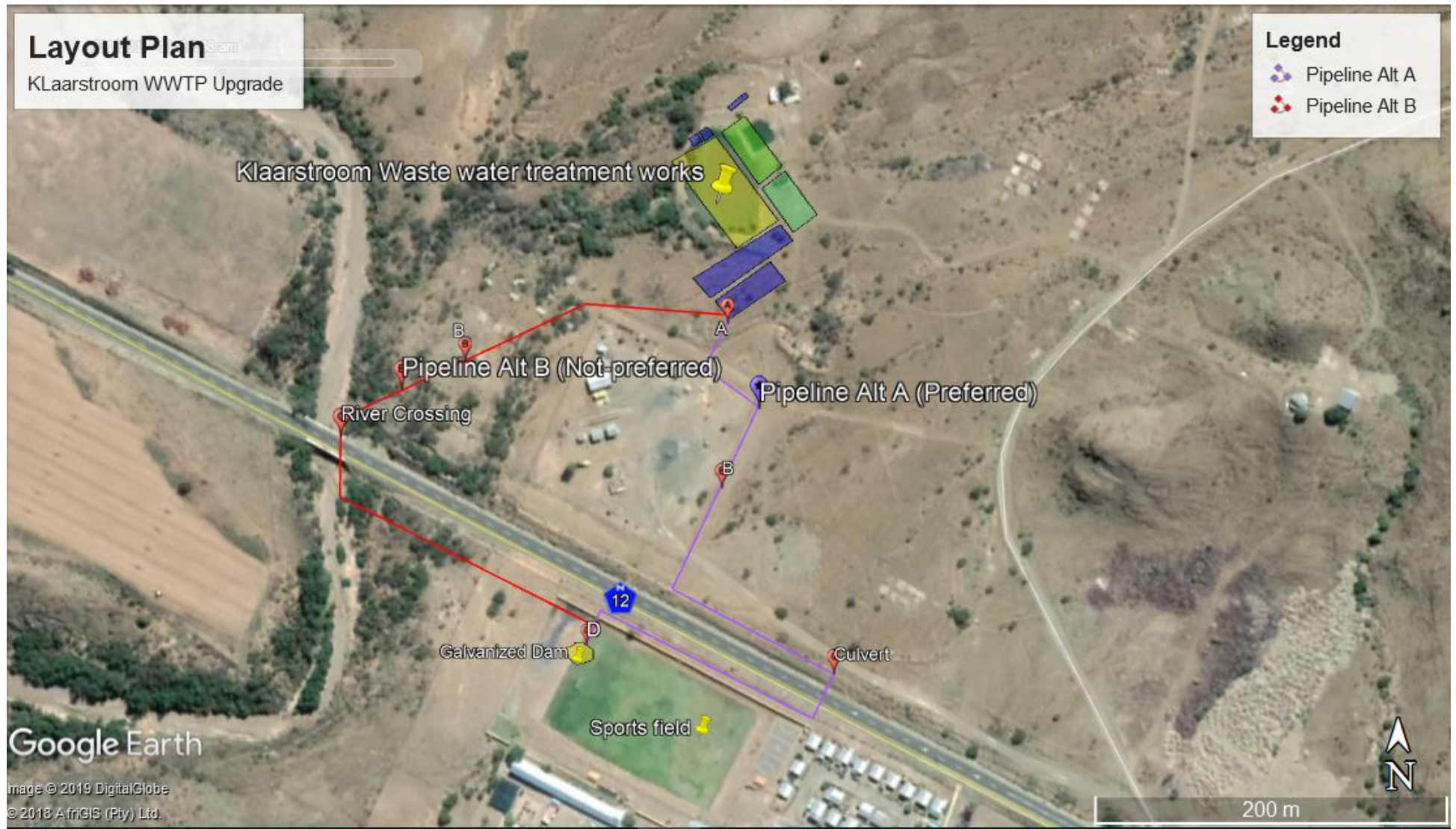


Appendix A_ Locality Map & Layout Plans





Appendix A_ Locality Map & Layout Plans



Appendix A_ Locality Map & Layout Plans

Waste Water Treatment Plant Centre Point (RE32 of Farm Klaarstroom 178, Prince Albert)	
Latitude (S)	33°19'20.09"S
Longitude (E)	22°31'43.44"E
Pipeline Route Alternative A – Preferred Route Pipeline Start Point A	
Latitude (S)	33°19'25.33"S
Longitude (E)	22°31'43.55"E
Pipeline Route Alternative A – Preferred Route Pipeline Point B	
Latitude (S)	33°19'25.98"S
Longitude (E)	22°31'43.17"E
Pipeline Route Alternative B – Not preferred Route Pipeline Point B	
Latitude (S)	33°19'22.99"S
Longitude (E)	22°31'37.86"E
Pipeline Route Alternative A – Preferred Route Pipeline Point C (Crossing the N12 through an existing culvert)	
Latitude (S)	33°19'28.76"S
Longitude (E)	22°31'46.02"E
Pipeline Route Alternative B – Not preferred Route Pipeline Point C (Crossing of Groot Rivier over an existing bridge on private land)	
Latitude (S)	33°19'24.38"S
Longitude (E)	22°31'35.11"E
Pipeline End Point D and location of Galvanised dam on sports field RE 34 of Farm Klaarstroom 178, Prince Albert	
Latitude (S)	33°19'28.40"S
Longitude (E)	22°31'40.64"E

Appendix A_ Locality Map & Layout Plans

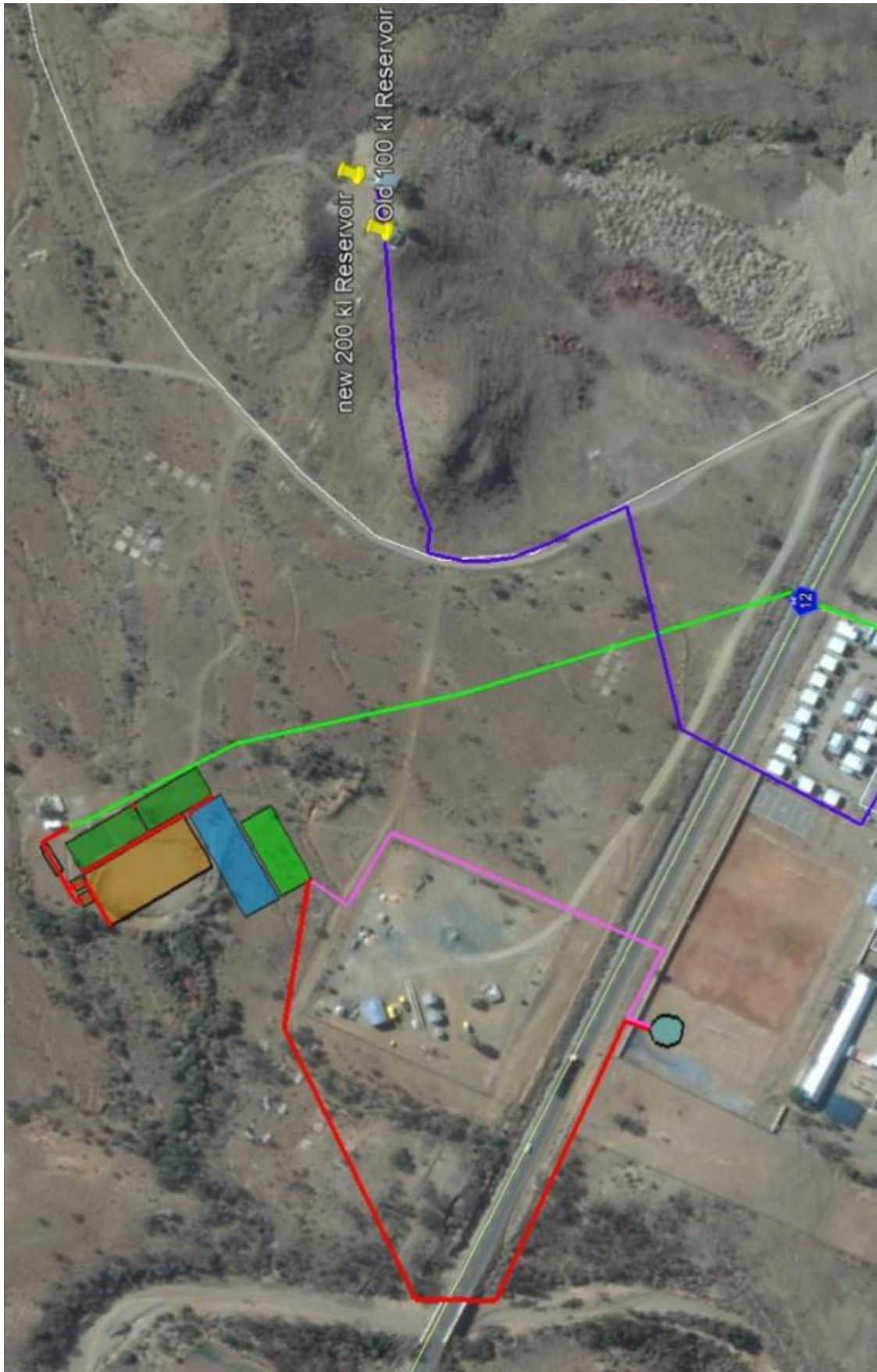


Figure 1: Existing pipelines represented in green and blue



Figure 2: Proposed WWTW upgrade layout