

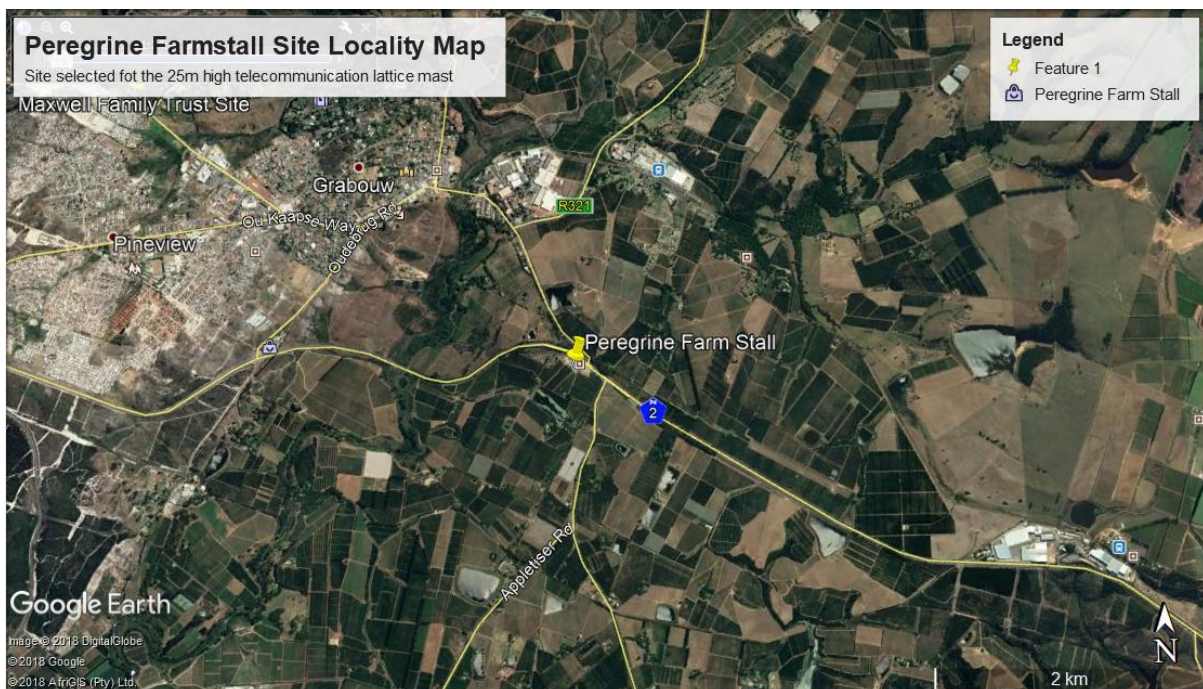
ATLAS TOWERS (PTY.) LTD: PROPOSED DEVELOPMENT OF A 25m HIGH TELECOMMUNICATIONS LATTICE MAST

RE Portion 19 Farm 319, Caldedon RD, Grabouw,
Western Cape (Peregrine Farm stall site)

POST-APPLICATION BASIC ASSESSMENT REPORT (PRE-APP BAR) FOR COMMENT

IN TERMS OF NEMA & THE EIA REGULATIONS 2014 (AS AMENDED)

MARCH 2019



DEADP REF: 16/3/3/6/7/1/E4/11/1223/18

**ATLAS TOWERS (PTY.) LTD: PROPOSED DEVELOPMENT OF
A 30m HIGH TELECOMMUNICATIONS LATTICE MAST**

RE Portion 19 Farm 319, Caldedon RD, Grabouw,
Western Cape (Peregrine Farm stall site)

DEADP REF: 16/3/3/6/7/1/E4/11/1223/18

**PREPARED FOR:
ATLAS TOWERS (PTY.) LTD:**

Cecilia Square

Cecilia Road

Paarl

7620

Tel: (023) 870 1302/ 1368

**PREPARED BY:
ENVIROAFRICA**

P.O. Box 5367

Helderberg

7135

Tel: 021 – 851 1616

Fax: 086 – 512 0154