

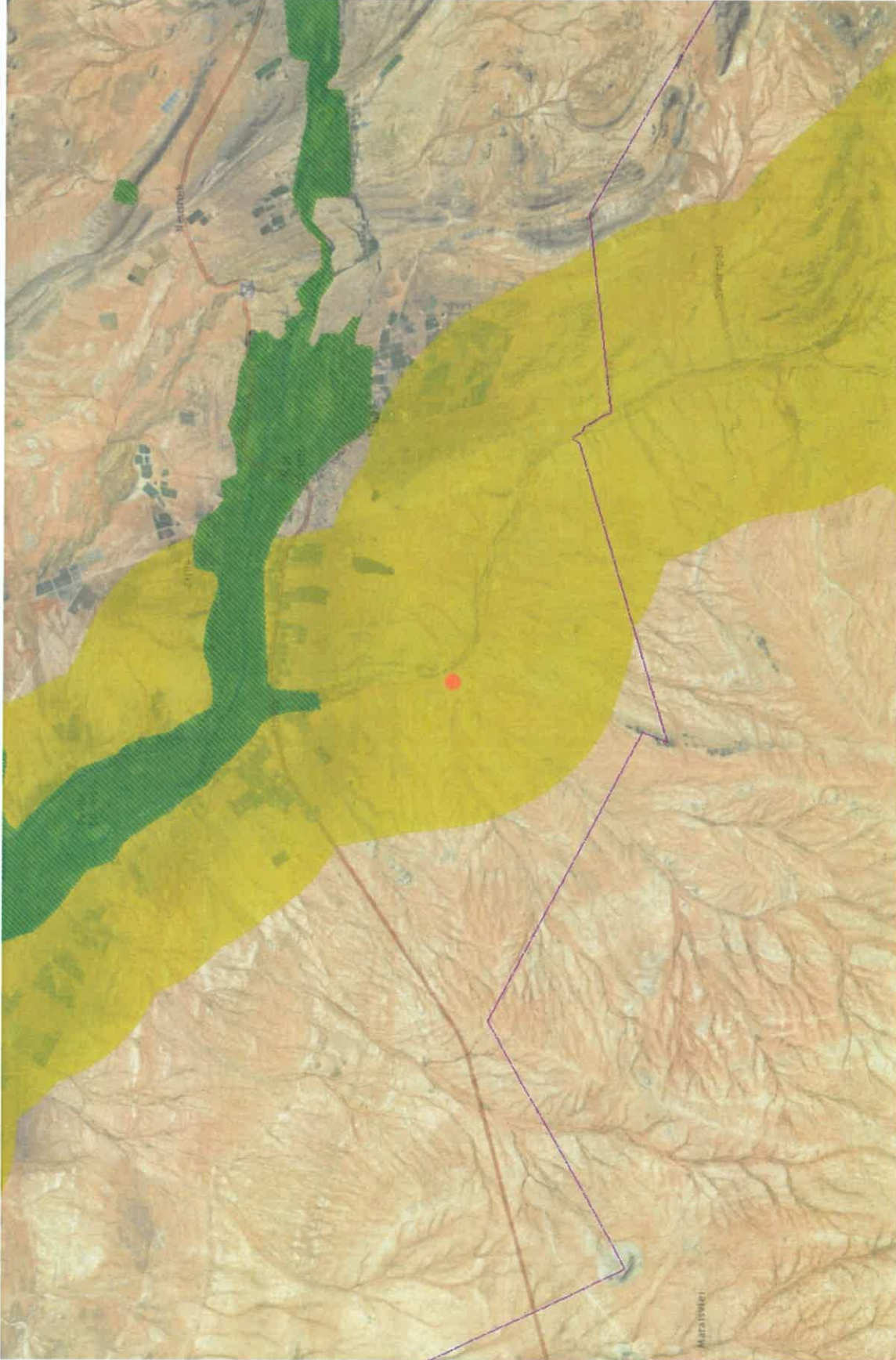
# APPENDIX C

---

## Sensitivity Maps



## Verneujk Pan Trust Proposed Sand Borrow Pit, Alheidt, Kakamas



**Description**

Orange dot on map indicates region of proposed Sha Sand Borrow Pit, Alheidt, Kakamas

Proposed development site fall within an Ecological Support Area (ESA) but does not fall within any Critical Biodiversity Areas (CBAs)

**Legend**

- Namakwe Biodiversity Sector Plan
- Local municipalities - LUDS
- Namakwe - Aquatic CBA map**
  - Critical Biodiversity Area (type 1)
  - Critical Biodiversity Area (type 2)
- Ecological Support Areas**
  - Ecological Support Area
- Namakwe - Terrestrial CBA map**
  - Critical Biodiversity Area (type 1)
  - Critical Biodiversity Area (type 2)
- Ecological Support Area**
  - Ecological Support Area
- Namakwe - Report Aquatic CBA map legend**
  - CBA aquatic (type 1)
  - CBA aquatic (type 2)
  - Ecological Support Areas aquatic
- World Street Map**

1: 144 448



This map is a user generated static output from an Internet mapping site and is for reference only. Data layers that appear on this map may or may not be accurate, current, or otherwise reliable.

**THIS MAP IS NOT TO BE USED FOR NAVIGATION**

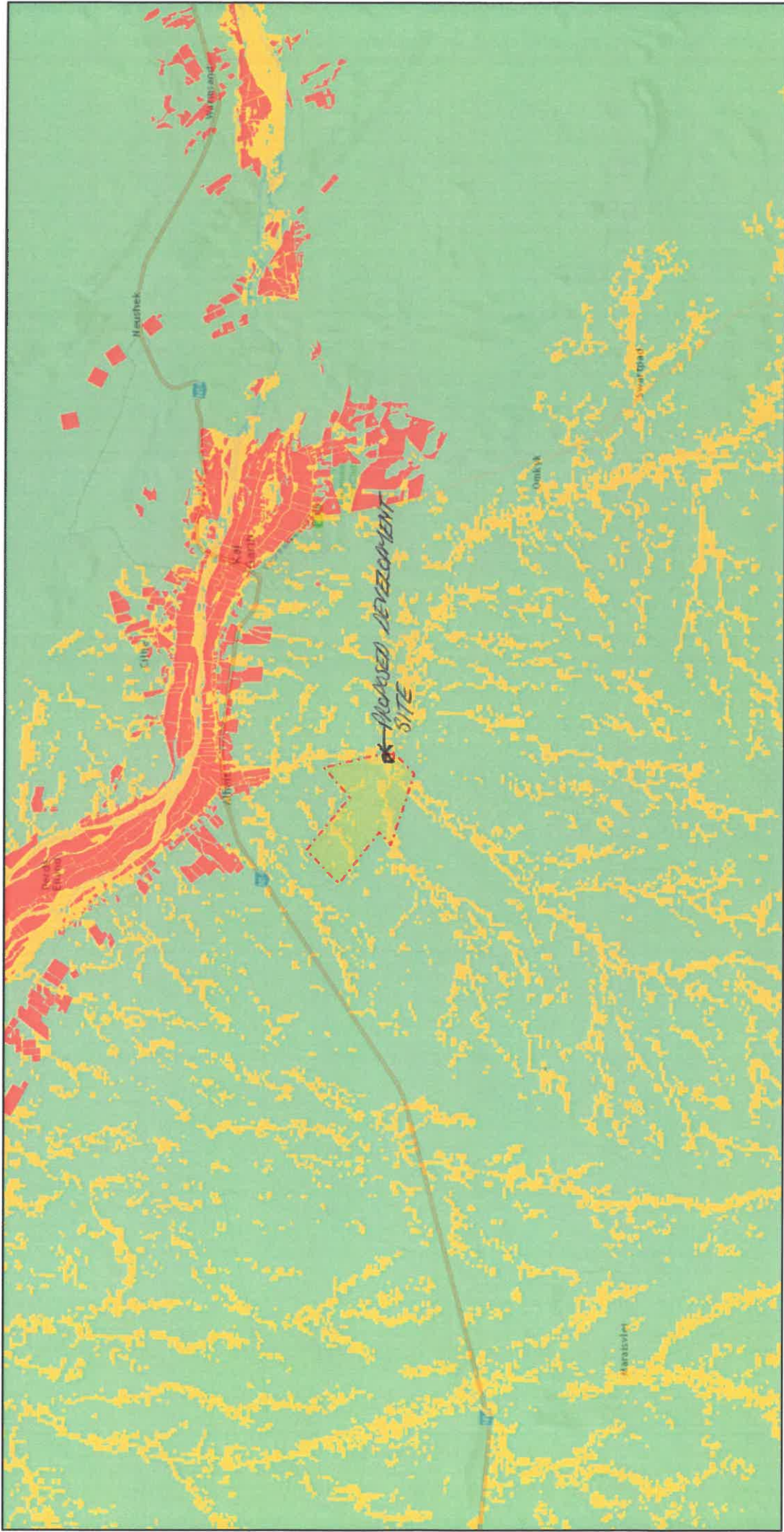
7,3 0 3,67 7,3 Kilometers



WGS 1984, Web Mercator, Auxiliary\_Sphere  
© Latitude Geographics Group, Ltd.



# Screening Report Map



9 January 2019

- Development Footprint
  - Site Area
  - EIA Application Development Footprint
  - EIA Application Site
  - National Jurisdiction Area
- 
- Very High
  - High
  - Medium
  - Low

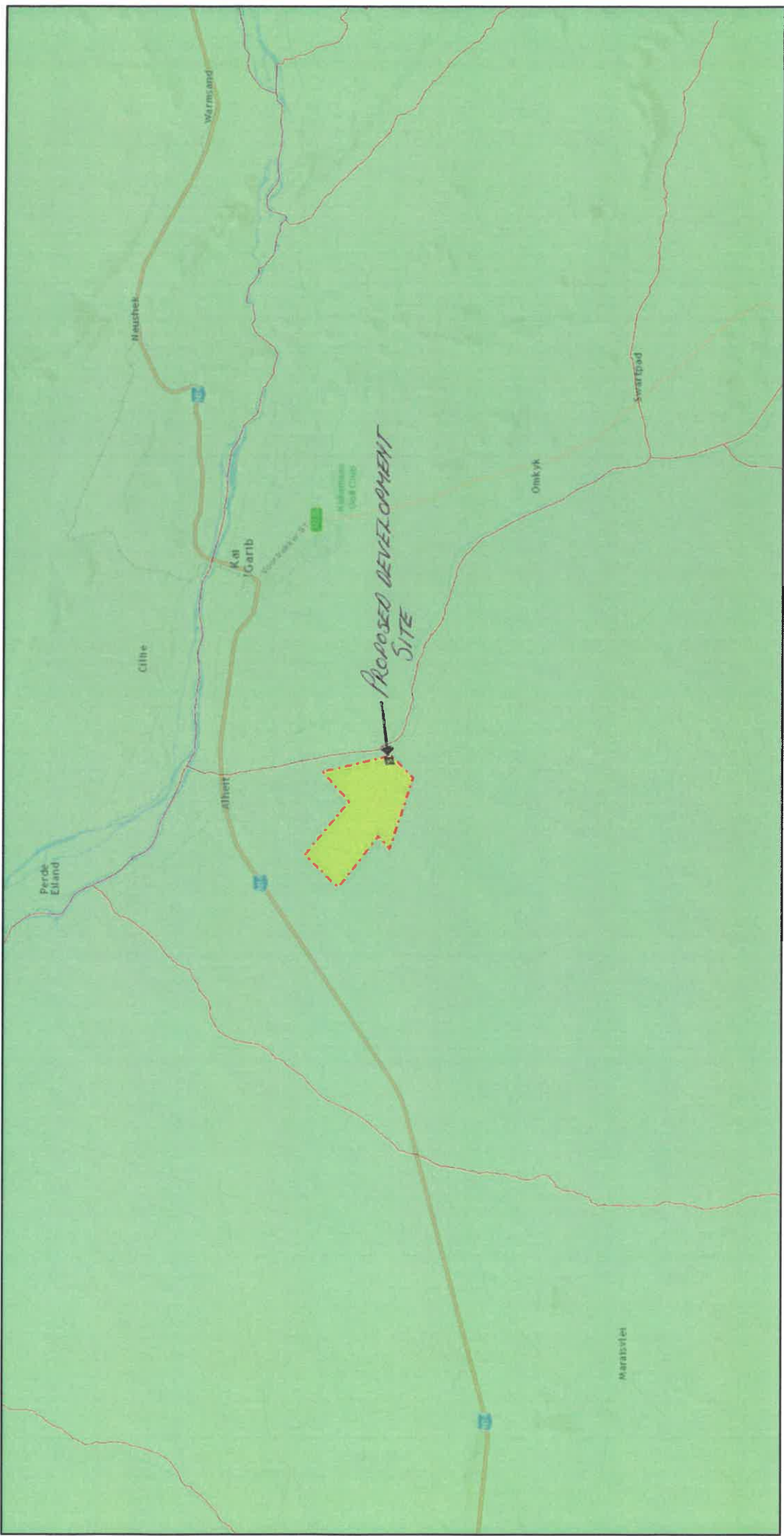


Sources: Esri, HERE, Garmin, USGS, Intermap, INCREMENT P, NRCan, Esri Japan, METI, Esri China (Hong Kong), Esri Korea, Esri (Thailand), NGCC, © OpenStreetMap contributors, and the GIS User Community





# Screening Report Map



9 January 2019

- Site Area
- EIA Application Development Footprint
- EIA Application Site
- National Jurisdiction Area
- Aquatic Biodiversity Combined Sensitivity**
- Very High
- Low



Sources: Esri, HERE, DeLorme, USGS, Imagery, INCREMENT P, NRCan, Esri Japan, METI, Esri China (Hong Kong), Esri Korea, Esri (Thailand), NGCC, © OpenStreetMap contributors, and the GIS User Community