

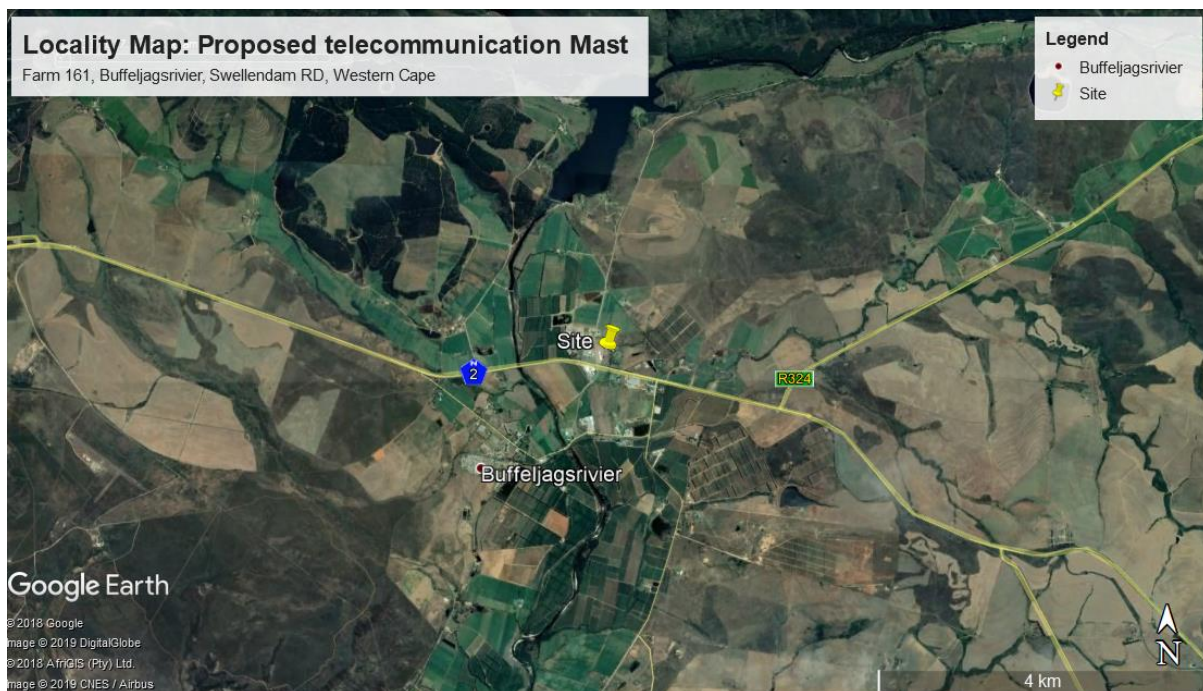
ATLAS TOWER (PTY.) LTD: PROPOSED DEVELOPMENT OF A 30m HIGH TELECOMMUNICATIONS MONOPOLE MAST

Farm 161, Buffeljagsrivier, Swellendam RD, Western Cape

POST-APPLICATION BASIC ASSESSMENT REPORT (PRE-APP BAR) FOR COMMENT

IN TERMS OF NEMA & THE EIA REGULATIONS 2014 (AS AMENDED)

APRIL 2019



DEADP REF: 16/3/3/6/7/1/E3/14/1447/18

**ATLAS TOWERS (PTY.) LTD: PROPOSED DEVELOPMENT OF
A 30m HIGH TELECOMMUNICATIONS LATTICE MAST**

Farm 161, Buffeljagsrivier, Swellendam RD, Western Cape

DEADP REF: 16/3/3/6/7/1/E3/14/1447/18

**PREPARED FOR:
ATLAS TOWERS (PTY.) LTD:**

**Cecilia Square
100 Cecilia Street
Paarl
7620
Tel: (023) 870 1302/ 1368**

**PREPARED BY:
ENVIROAFRICA**

**P.O. Box 5367
Helderberg
7135
Tel: 021 – 851 1616
Fax: 086 – 512 0154**