

Appendix A (Addendum A-2): Sensitivity Maps

Critical Biodiversity Areas (CBAs) and Ecological Support Areas (ESAs) Map

Description
Critical Biodiversity Areas (CBAs) and Ecological Support Areas (ESAs) Map for Steynville/Hopetown area



- Legend**
- Northern Cape Critical Biodiversity Areas 20
 - Critical Biodiversity Area One
 - Critical Biodiversity Area Two
 - Ecological Support Area
 - Other Natural Areas
 - Protected Area
 - South African patent farm cadaster
 - Formal protected areas (NBA 2011)
 - Informal protected areas (NPAES)
 - Marine Protected Areas MPAs (NBA 2011)
 - World Street Map
 - Addo Biodiversity Conservation Plan
 - Cape Winelands DMA Biodiversity Assessment
 - Cape Town Biodiversity Network
 - Central Karoo Biodiversity Assessment
 - Eastern Cape Biodiversity Conservation Plan
 - FSP Bergivier
 - FSP Breede Valley
 - FSP Cederberg
 - FSP Hesseque
 - FSP Langeberg
 - FSP Matzikama
 - FSP Mossel Bay
 - FSP Saldanha Bay
 - FSP Witzenberg
 - Garden Route Biodiversity Sector Plan

1: 36 112



This map is a user generated static output from an internet mapping site and is for reference only. Data layers that appear on this map may or may not be accurate, current, or otherwise reliable.
THIS MAP IS NOT TO BE USED FOR NAVIGATION

Vegetation Map_Hopetown Sewage Gravity Line

Description

The proposed sewage line (green line) falls on Kimberley Thornveld (not protected in terms of NEMBA).



Legend

National Vegetation Map 2012 beta 2

- FFs 1 Bokkeveld Sandstone Fynbos
- FFs 2 Graafwater Sandstone Fynbos
- FFs 3 Ollants Sandstone Fynbos
- FFs 4 Cedarberg Sandstone Fynbos
- FFs 5 Winterhoek Sandstone Fynbos
- FFs 6 Pletberg Sandstone Fynbos
- FFs 7 North Hex Sandstone Fynbos
- FFs 8 South Hex Sandstone Fynbos
- FFs 9 Peninsula Sandstone Fynbos
- FFs 10 Harequeus Sandstone Fynbos
- FFs 11 Kogelberg Sandstone Fynbos
- FFs 12 Overberg Sandstone Fynbos
- FFs 13 North Sonderend Sandstone Fynbos
- FFs 14 South Sonderend Sandstone Fynbos
- FFs 15 North Langeberg Sandstone Fynbos
- FFs 16 South Langeberg Sandstone Fynbos
- FFs 17 Pletberg Sandstone Fynbos
- FFs 18 North Outeniqua Sandstone Fynbos
- FFs 19 South Outeniqua Sandstone Fynbos
- FFs 20 Tsitsikamma Sandstone Fynbos
- FFs 21 North Roodberg Sandstone Fynbos
- FFs 22 South Roodberg Sandstone Fynbos
- FFs 23 North Swarberg Sandstone Fynbos
- FFs 24 South Swarberg Sandstone Fynbos
- FFs 25 North Kammanassie Sandstone Fynbos

1: 18 056



This map is a user generated static output from an internet mapping site and is for reference only. Data layers that appear on this map may or may not be accurate, current, or otherwise reliable.

THIS MAP IS NOT TO BE USED FOR NAVIGATION



National Freshwater Ecosystems Priority Areas_Hopetown Sewage Gravity Line

Description

The proposed sewage line (red line) falls within Fish Support Area.



Legend

- Local municipalities
- Farm boundaries
- Water management areas
- Sub water management areas
- Fish points
 - Fish sanctuary; CREM fish
 - Fish sanctuary, other fish
- Wetland cluster
- NFEPA rivers
 - 1
 - 5
 - 10
- Formal land-based (NBA 2011)
- Informal land-based (NPAES)
- National wetlands map 4 (NFEPA wetland)
- National wetlands map 4 (NFEPA wetland) - Estuaries
- Wetland NFEPA wetlands map
- Wetland and estuary FEPA
- River FEPAs
- River FEPA and associated sub-quaternary catchment
- Fish Support Area and associated sub-quaternary catchment
- Phase 2 FEPA and associated sub-quaternary catchment
- Upstream management area
- World Street Map

1: 36 112



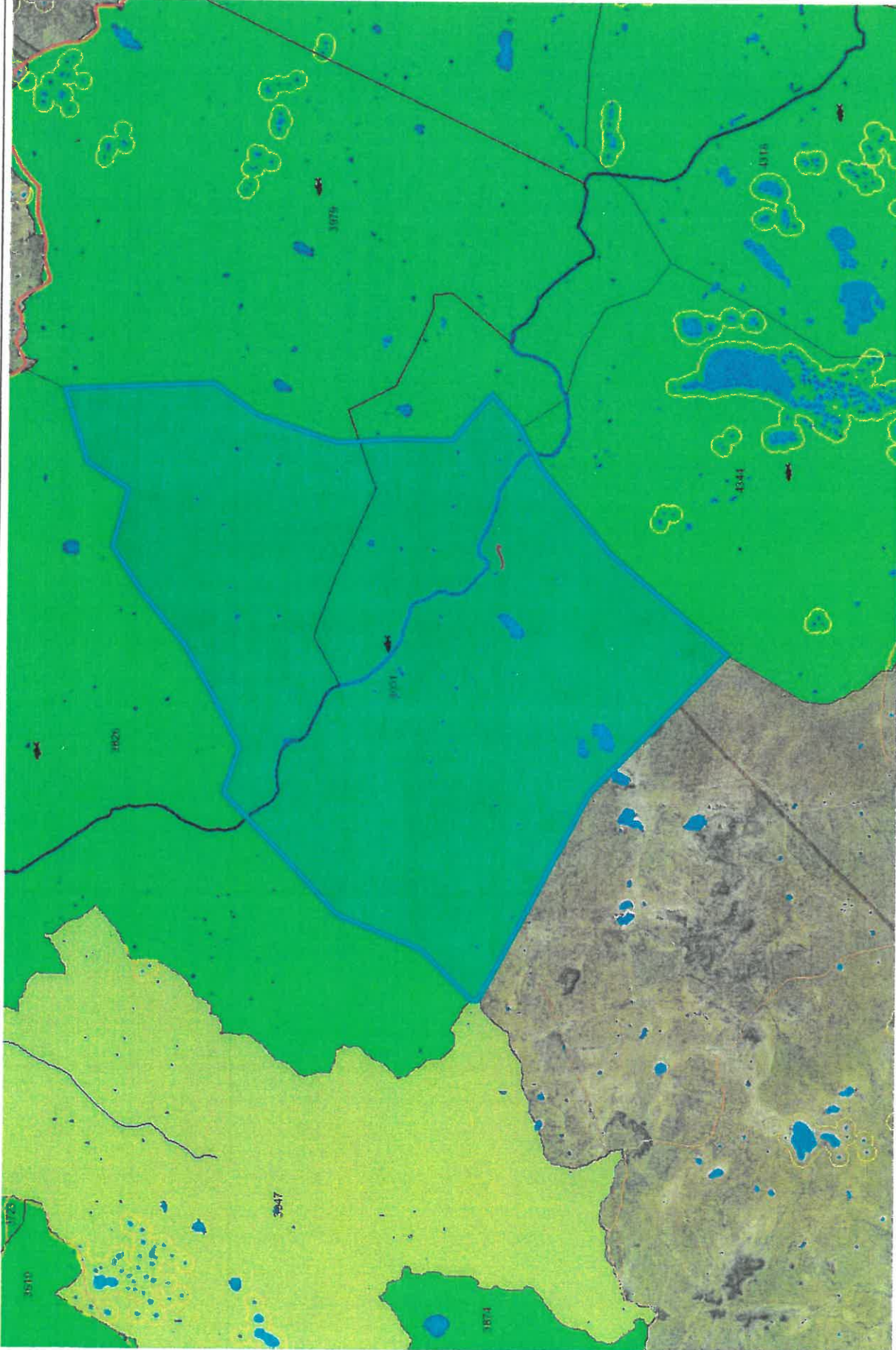
This map is a user generated static output from an internet mapping site and is for reference only. Data layers that appear on this map may or may not be accurate, current, or otherwise reliable.

THIS MAP IS NOT TO BE USED FOR NAVIGATION

1.8 0 0.92 1.8 Kilometers

WGS 1984 Web_Mercator_Auxiliary_Sphere
© Latitude Geographics Group Ltd.

National Freshwater Ecosystems Priority Areas_Hopetown Sewage Gravity Line



Description

The proposed sewage line (red line) falls within Fish Support Area.

Legend

- Local municipalities
- Water management areas
- Sub water management areas
- Fish points**
 - Fish sanctuary, GREEN fish
 - Fish sanctuary, other fish
- Wetland cluster**
- NFEPA rivers**
 - 1
 - 5
 - 10
- Formal land-based (NBA 2011)
- Informal land-based (NPAES)
- Marine - MPA (NBA 2011)
- National wetlands map 4 (NFEPA wetlands)
- Estuaries
- Wetland NFEPA wetlands map
- Wetland and estuary FEPA
- River FEPAs
- River FEPA and associated sub-quaternary cat
- Fish Support Area and associated sub-quaternary
- Phase 2 FEPA and associated sub-quaternary
- Upstream management area
- World Street Map

1: 288 895



14,7 0 7,34 14,7 Kilometers

WGS_1984_Web_Mercator_Auxiliary_Sphere
© Latitude Geographics Group Ltd.

This map is a user generated static output from an internet mapping site and is for reference only. Data layers that appear on this map may or may not be accurate, current, or otherwise reliable.

THIS MAP IS NOT TO BE USED FOR NAVIGATION