

Appendix A: Locality Maps (Alternative 1 – Preferred proposed route)

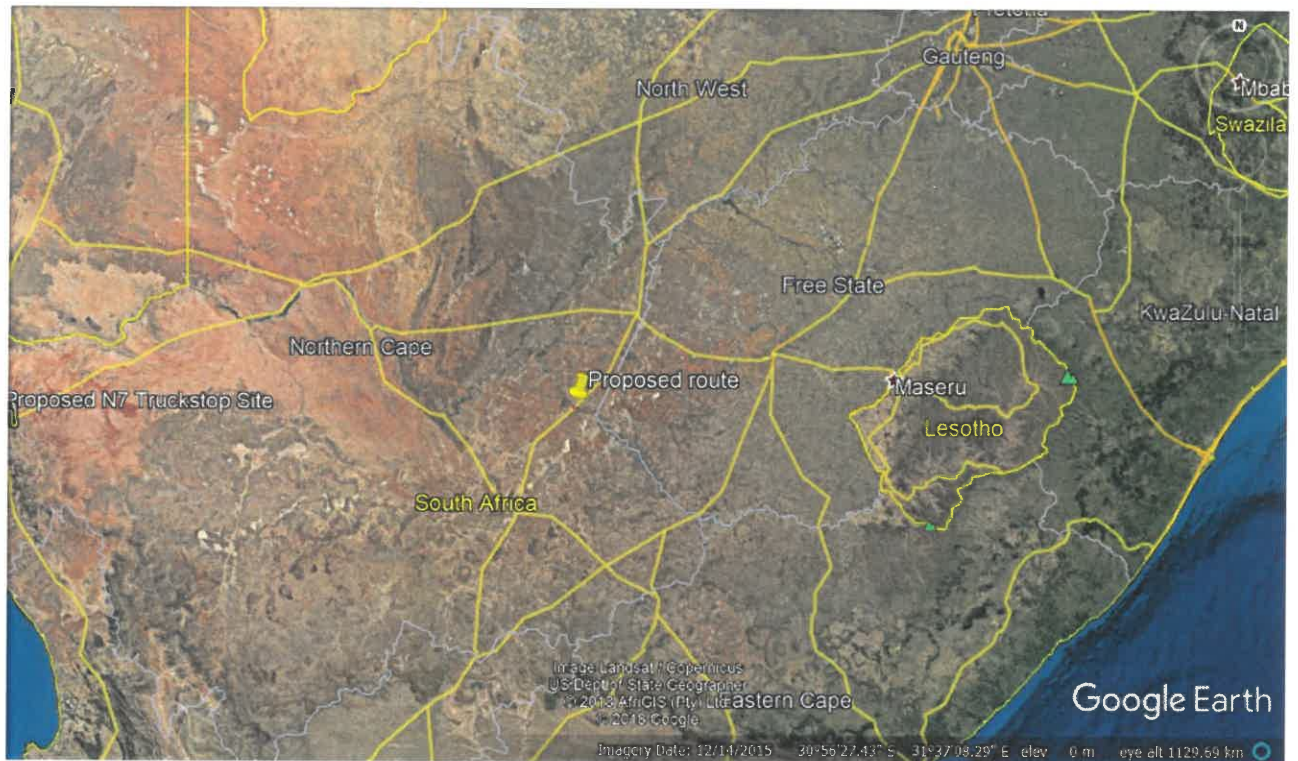


Figure 1: Development area of the proposed preferred route (Alternative 1) for the Steynville sewage outfall pipeline which traverses several erven near Hopetown in the Northern Cape (Thembelihle Municipality)

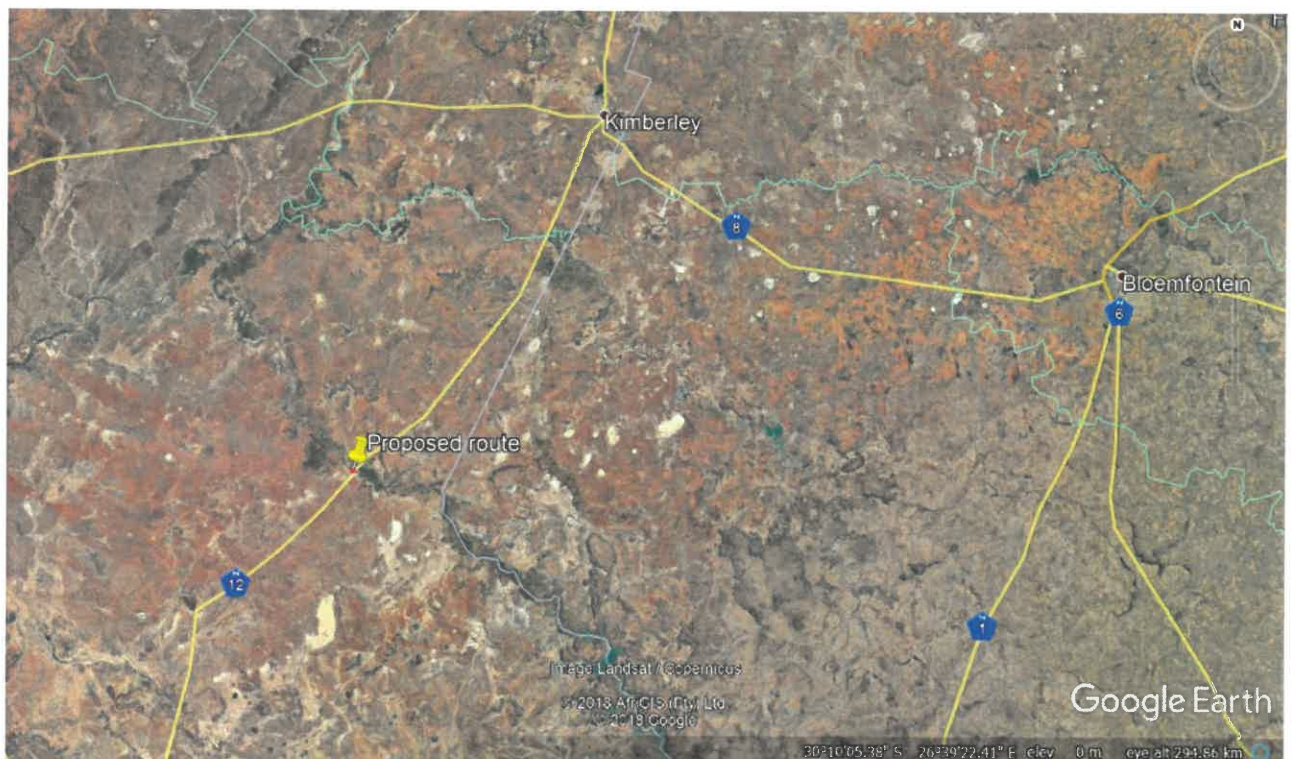


Figure 2: Development area of the proposed preferred route (Alternative 1) for the Steynville sewage outfall pipeline which traverses several erven near Hopetown, Thembelihle Local Municipality, Northern Cape



Figure 3: Development area of the proposed preferred route (Alternative 1) for the Steynville sewage outfall pipeline which traverses several erven near Hopetown in the Northern Cape (Thembelihle Municipality)

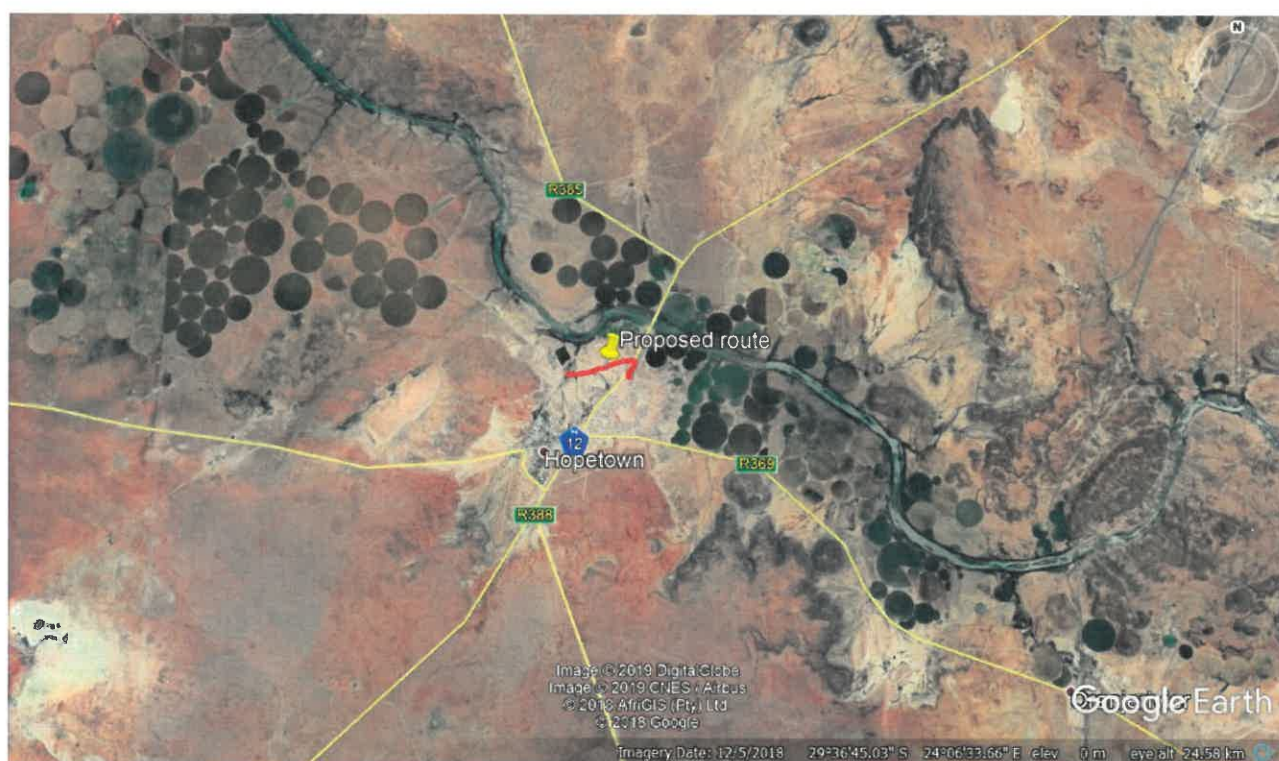


Figure 4: Development area of the proposed preferred route (indicated in red) for the Steynville sewage outfall pipeline which traverses several erven on either side of the N12 highway near Hopetown, Thembelihle Local Municipality, Northern Cape



Figure 5: Development area of the proposed preferred route (Alternative 1 indicated in red) for the Steynville sewage outfall pipeline which traverses several erven near Hopetown in the Northern Cape (Thembelihle Municipality)

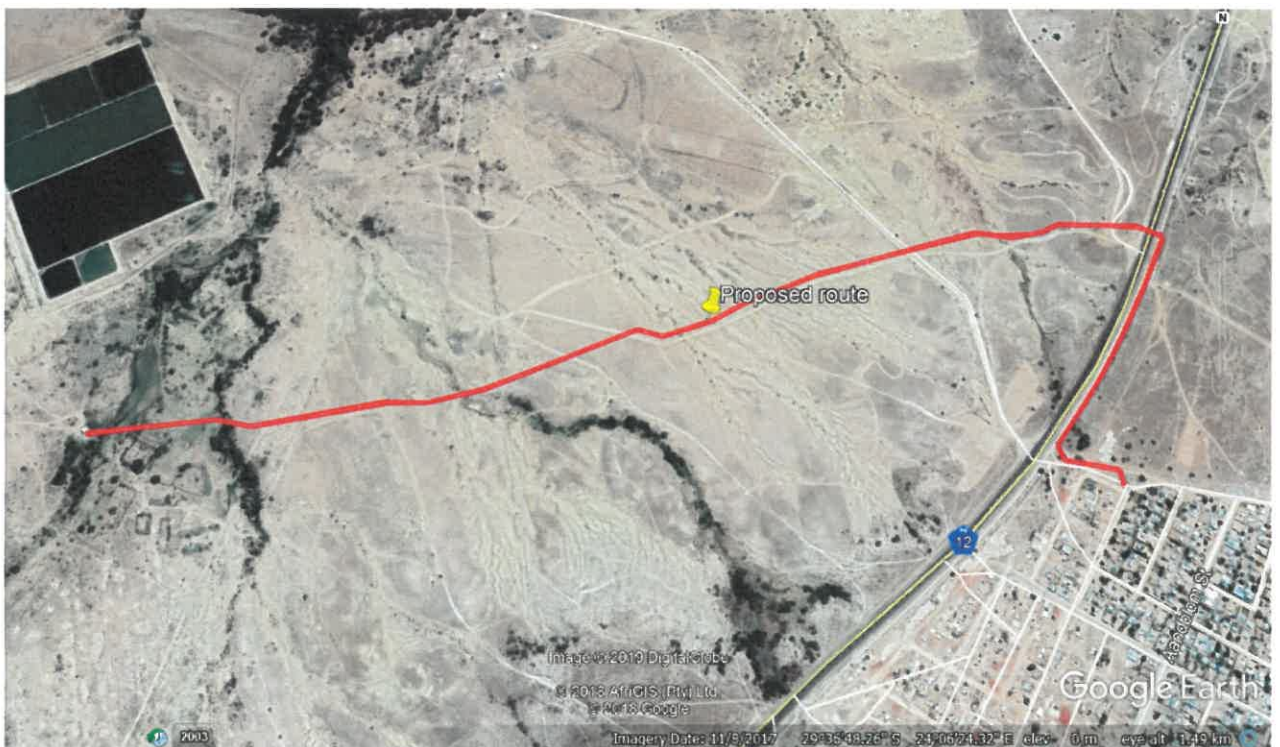


Figure 6: Development area of the proposed preferred route (Alternative 1 indicated in red) for the Steynville sewage outfall pipeline which traverses several erven near Hopetown in the Northern Cape (Thembelihle Municipality)

Appendix A: Locality Maps (Alternative 2 – Proposed route)

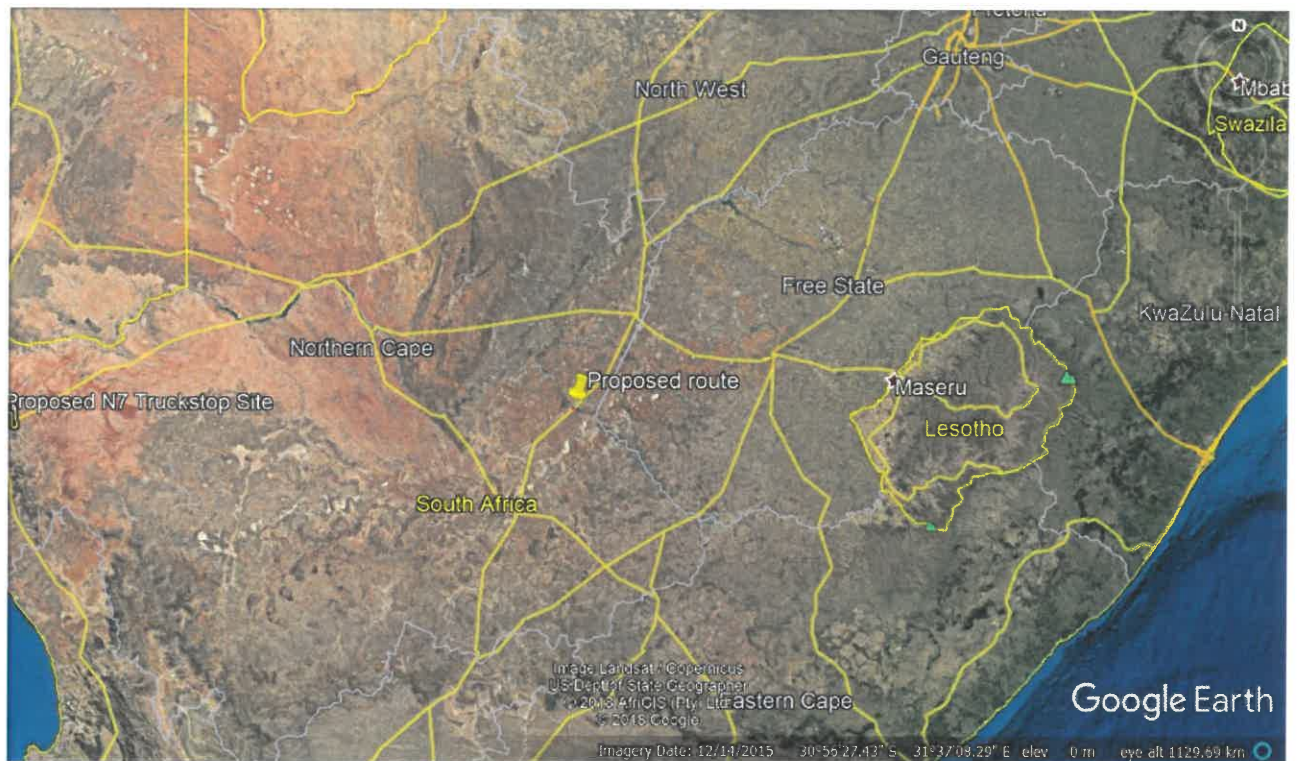


Figure 7: Development area for the second proposed route (Alternative 2) of the Steynville sewage outfall pipeline which traverses several erven near Hopetown in the Northern Cape (Thembelihle Municipality)

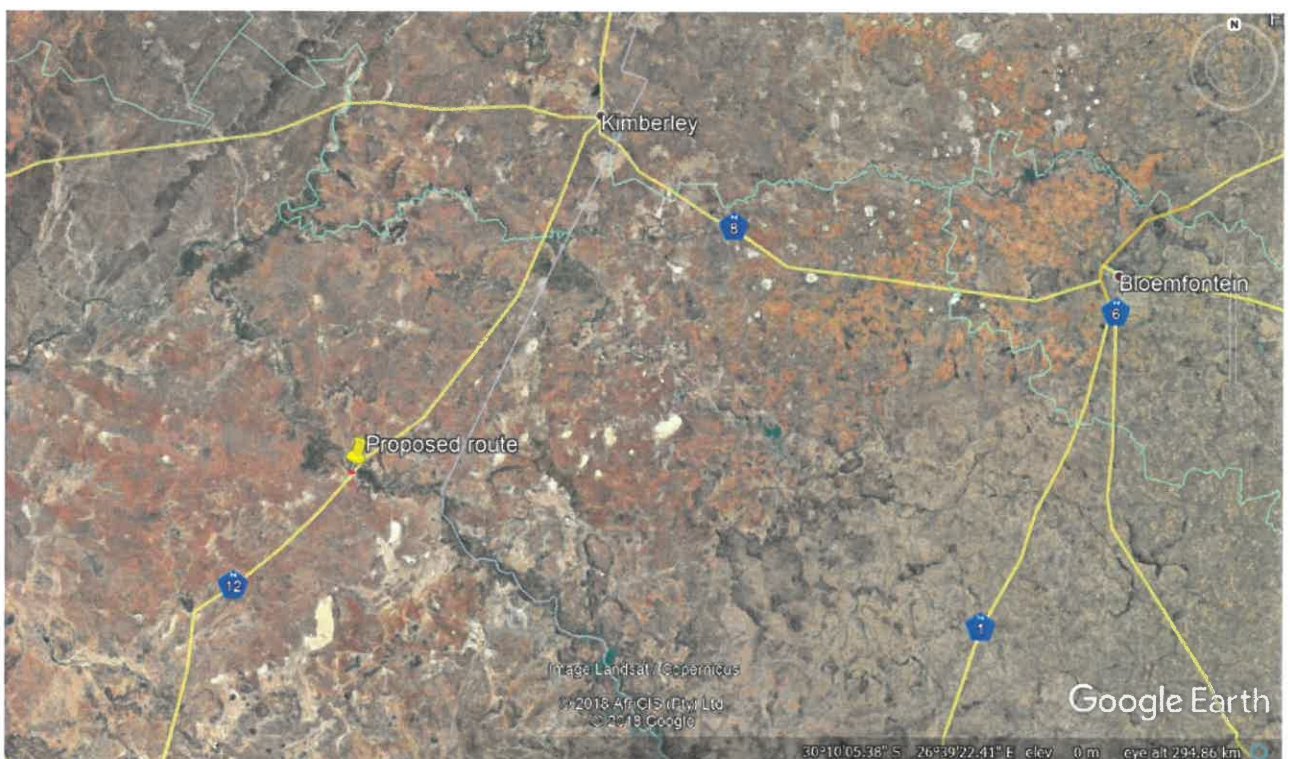


Figure 8: Development area of a second proposed route (Alternative 2) for the Steynville sewage outfall pipeline which traverses several erven near Hopetown, Thembelihle Local Municipality, Northern Cape



Figure 9: Development area for the second, alternative route (indicated in blue) of the Steynville sewage outfall pipeline which traverses several erven near Hopetown in the Northern Cape (Thembelihle Municipality)

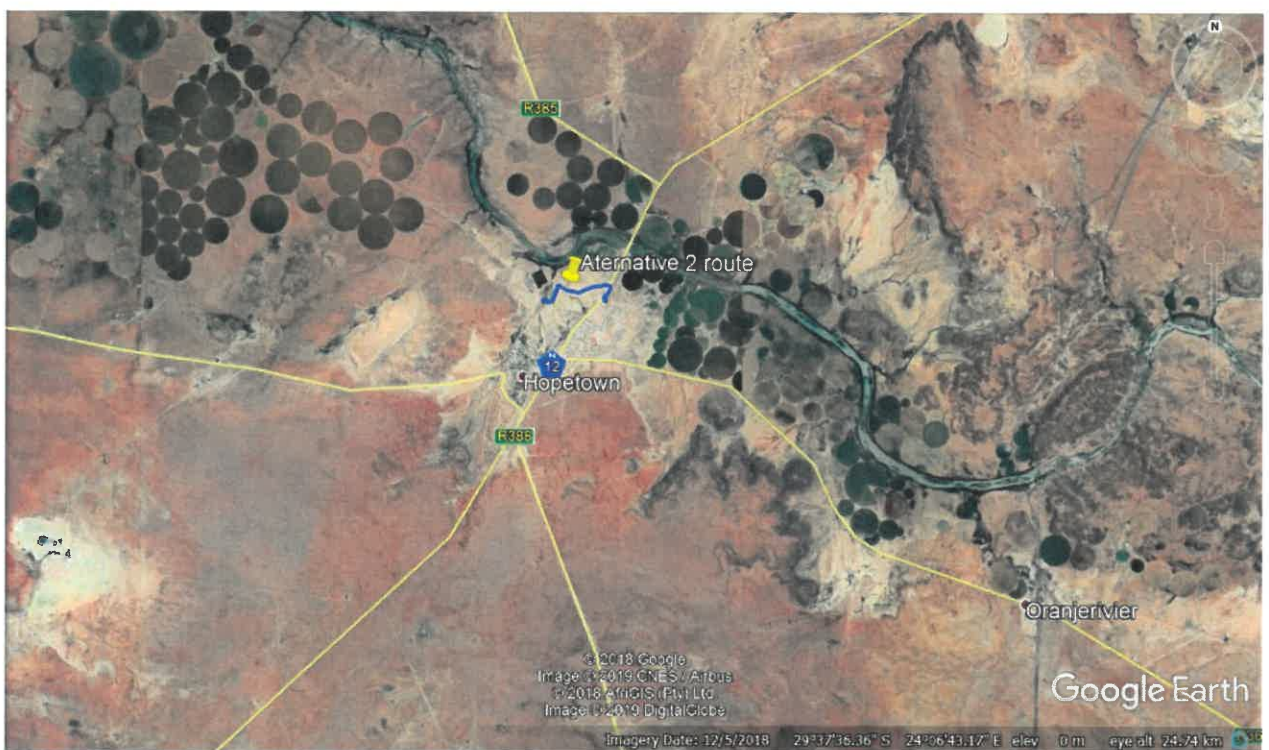


Figure 10: Development area for the second, alternative route (indicated in blue) of the Steynville sewage outfall pipeline which traverses several erven on either side of the N12 highway near Hopetown, Thembelihle Local Municipality, Northern Cape



Figure 11: Development area for the second, alternative route (indicated in blue) of the Steynville sewage outfall pipeline which traverses several erven near Hopetown in the Northern Cape (Thembelihle Municipality)

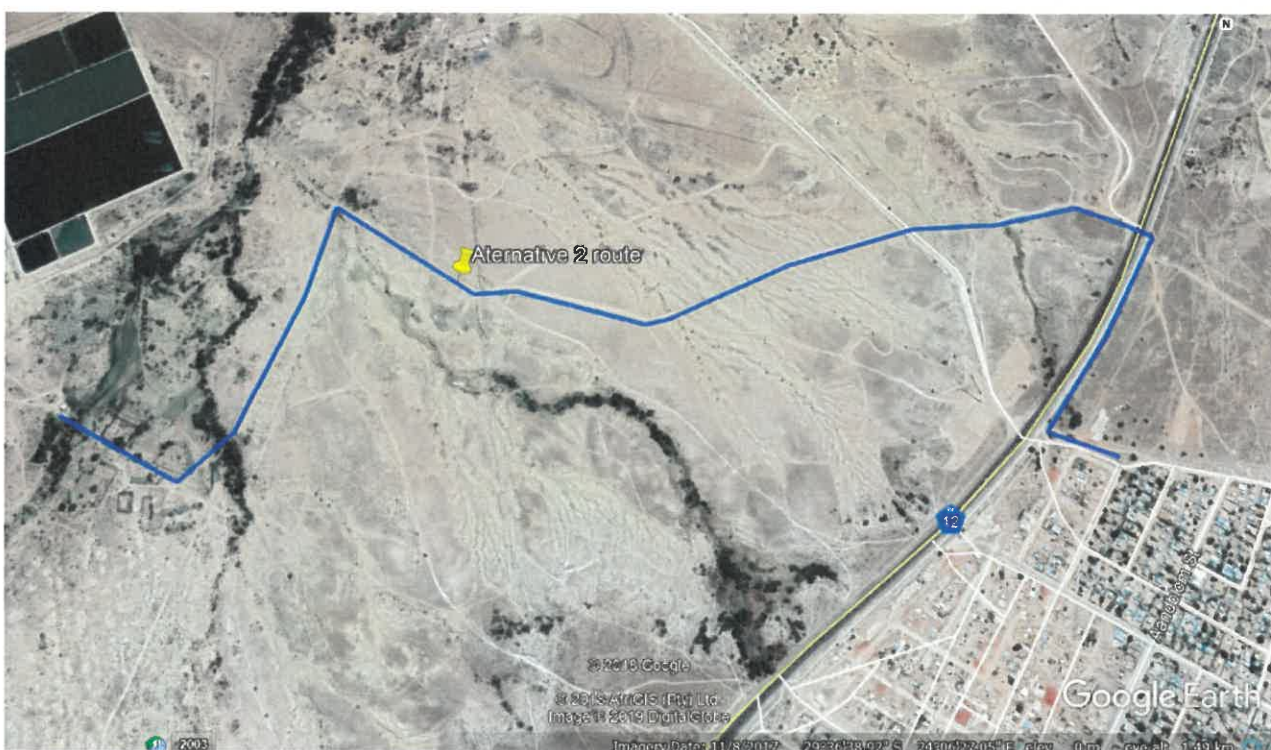


Figure 12: Development area for the second, alternative route (indicated in blue) of the Steynville sewage outfall pipeline which traverses several erven near Hopetown in the Northern Cape (Thembelihle Municipality)

Appendix A: Locality Maps (Alternate 3 – Proposed route)

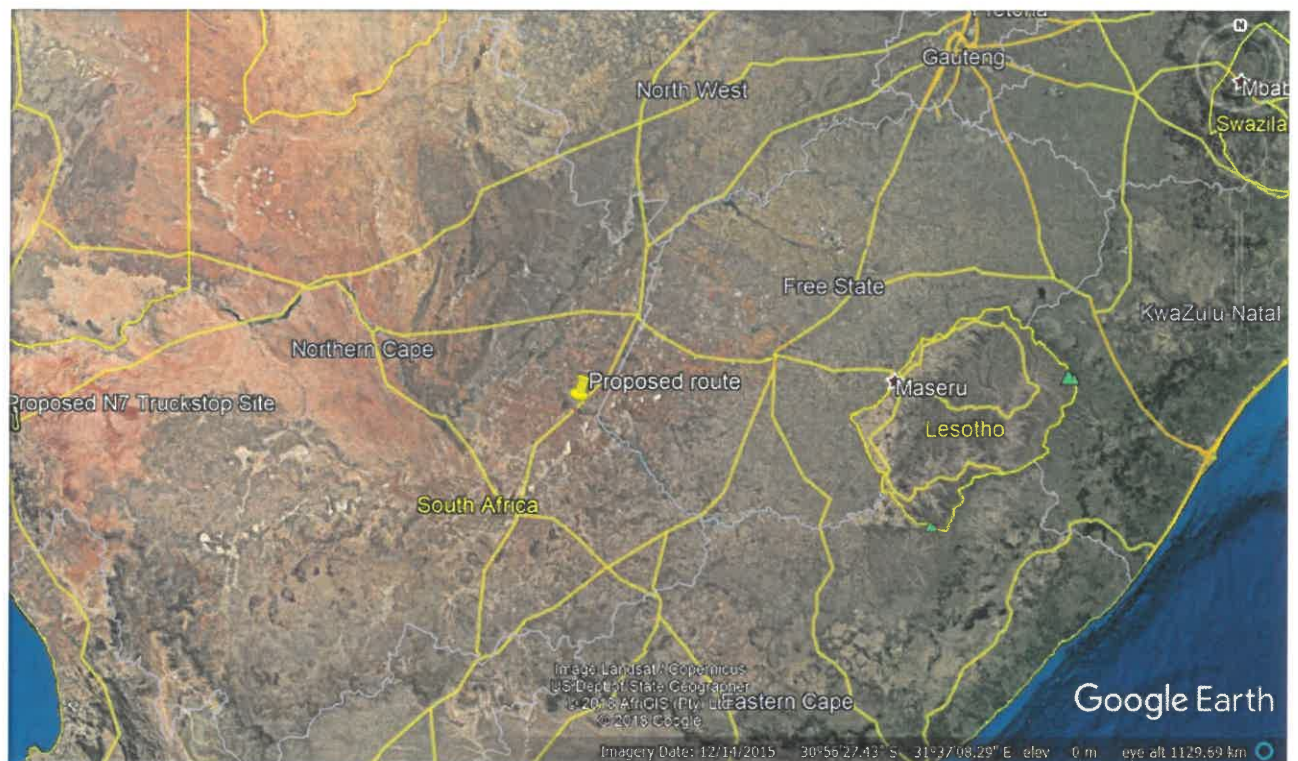


Figure 13: Development area for a third proposed alternate route of the Steynville sewage outfall pipeline which traverses several erven near Hopetown in the Northern Cape (Thembelihle Municipality)

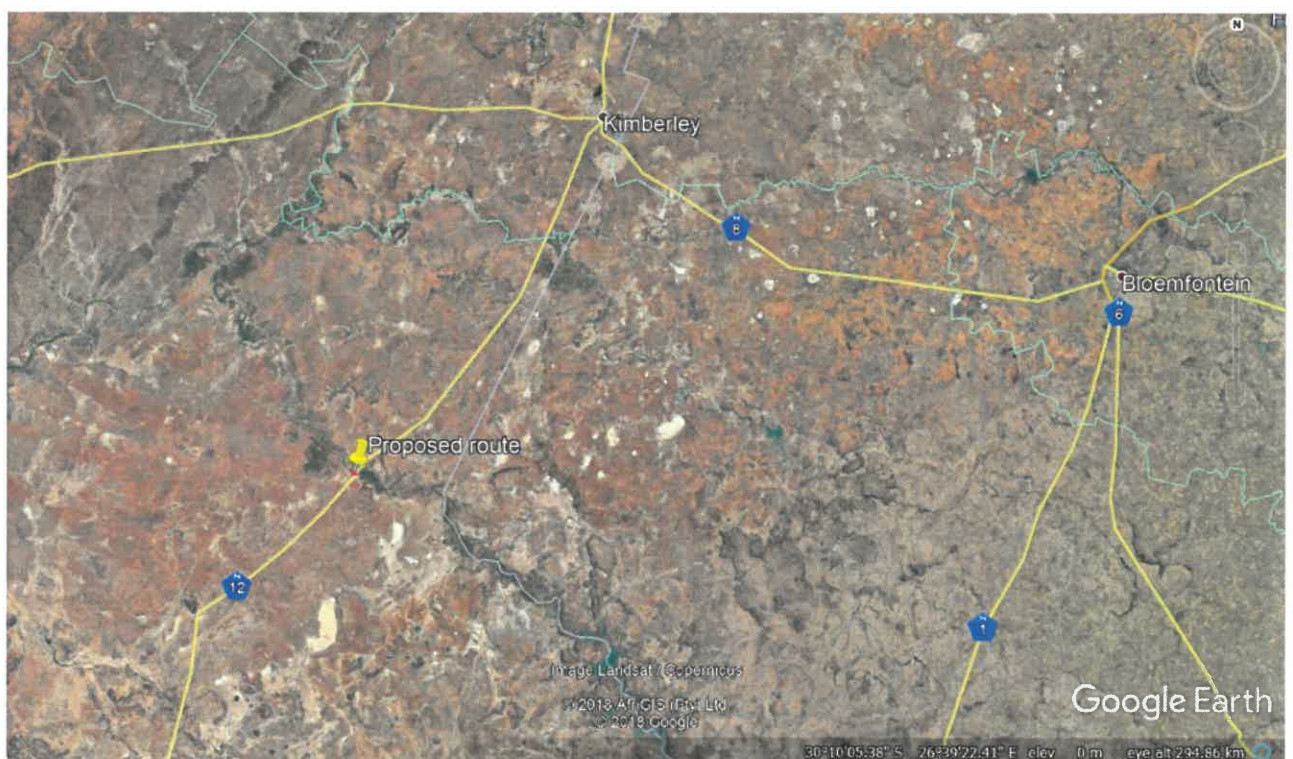


Figure 14: Development area for a third proposed alternate route of the Steynville sewage outfall pipeline which traverses several erven near Hopetown, Thembelihle Local Municipality, Northern Cape

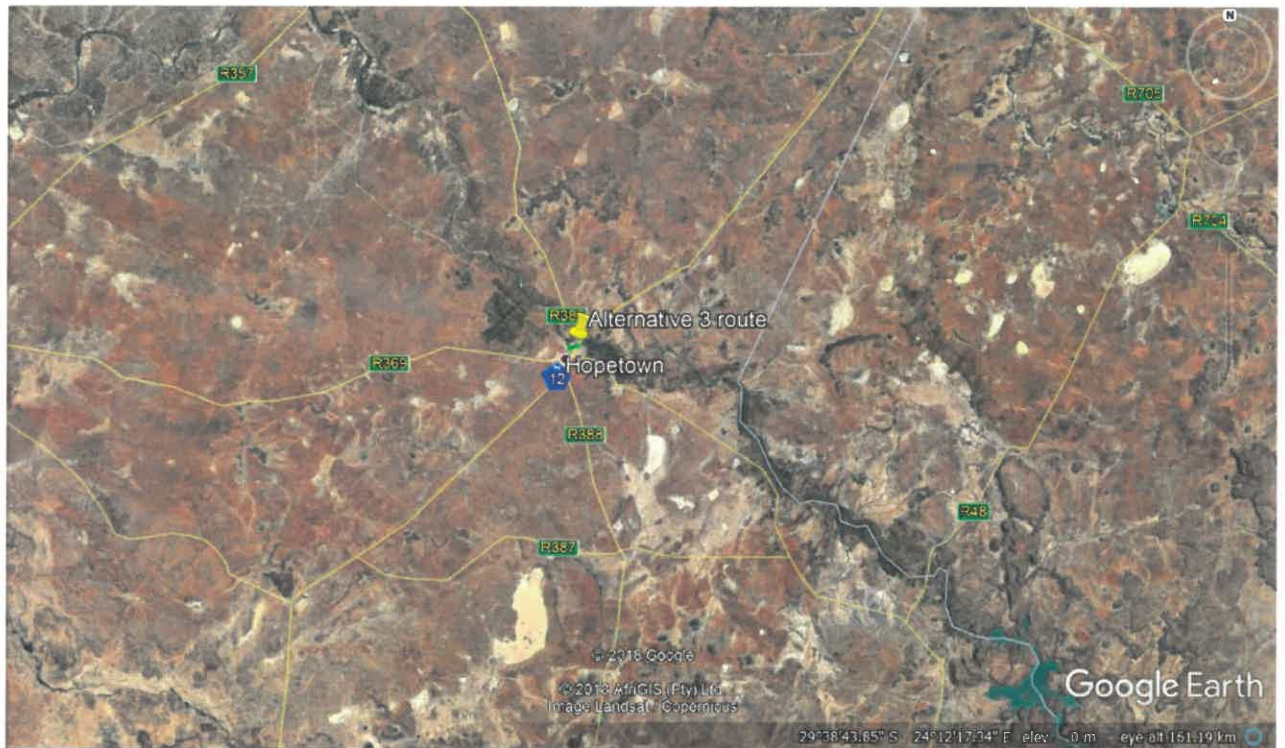


Figure 15: Development area for the third proposed alternate route (indicated in green) of the Steynville sewage outfall pipeline which traverses several erven near Hopetown in the Northern Cape (Thembelihle Municipality)

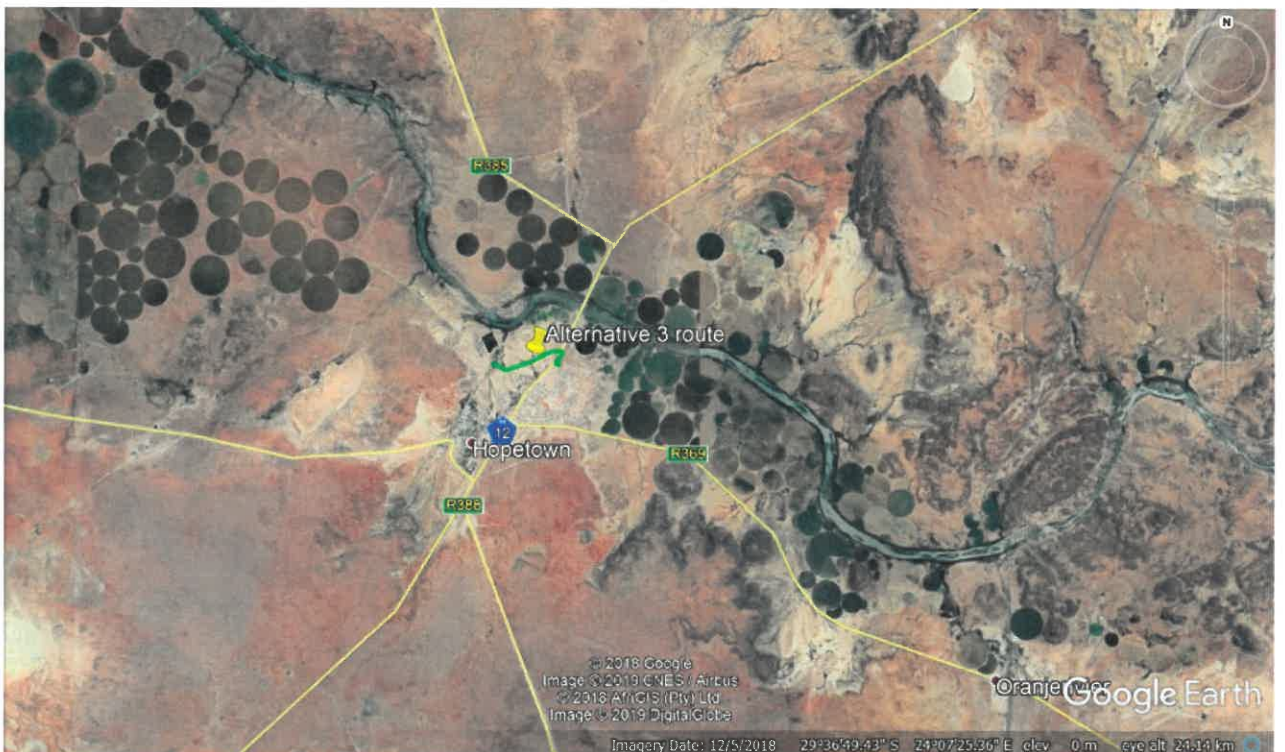


Figure 16: Development area for a third proposed alternate route (indicated in green) of the Steynville sewage outfall pipeline which traverses several erven on either side of the N12 highway near Hopetown, Thembelihle Local Municipality, Northern Cape



Figure 17: Development for a third proposed alternate route (indicated in green) of the Steynville sewage outfall pipeline which traverses several erven near Hopetown in the Northern Cape (Thembelihle Municipality)

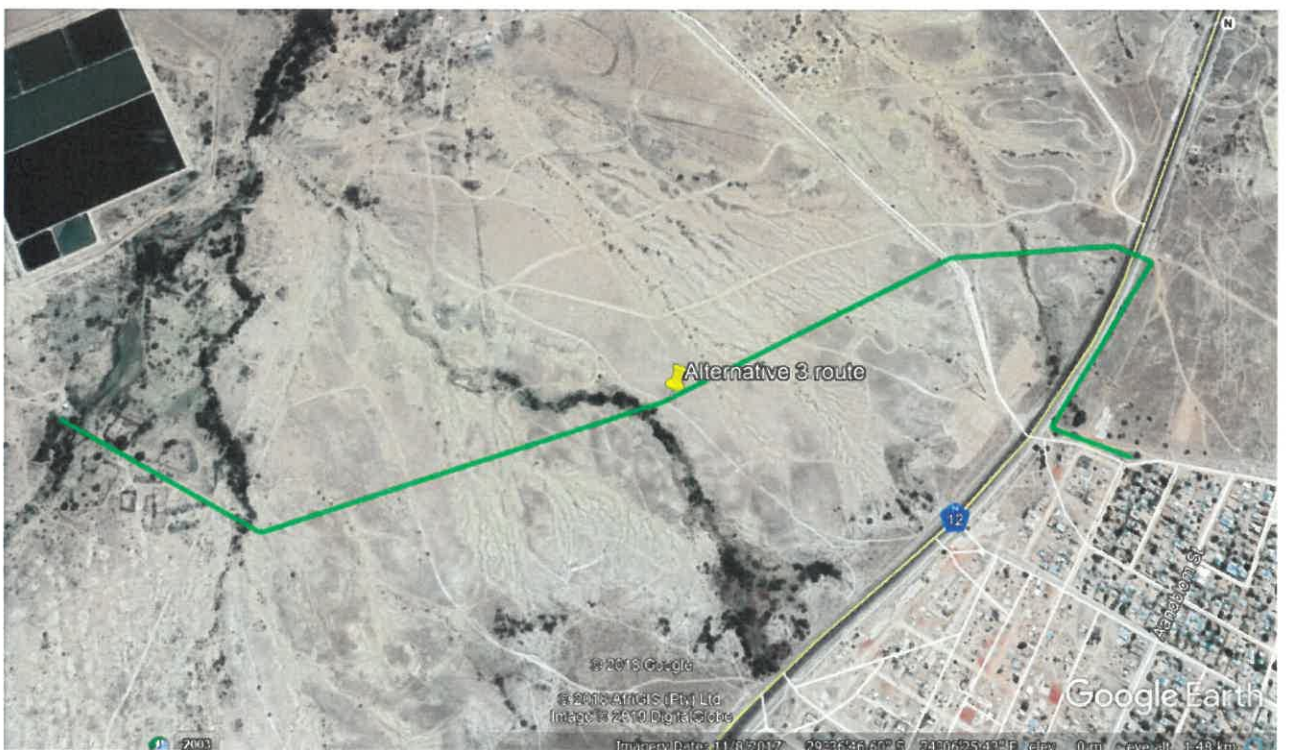


Figure 18: Development area for a third proposed alternate route (indicated in green) of the Steynville sewage outfall pipeline which traverses several erven near Hopetown in the Northern Cape (Thembelihle Municipality)