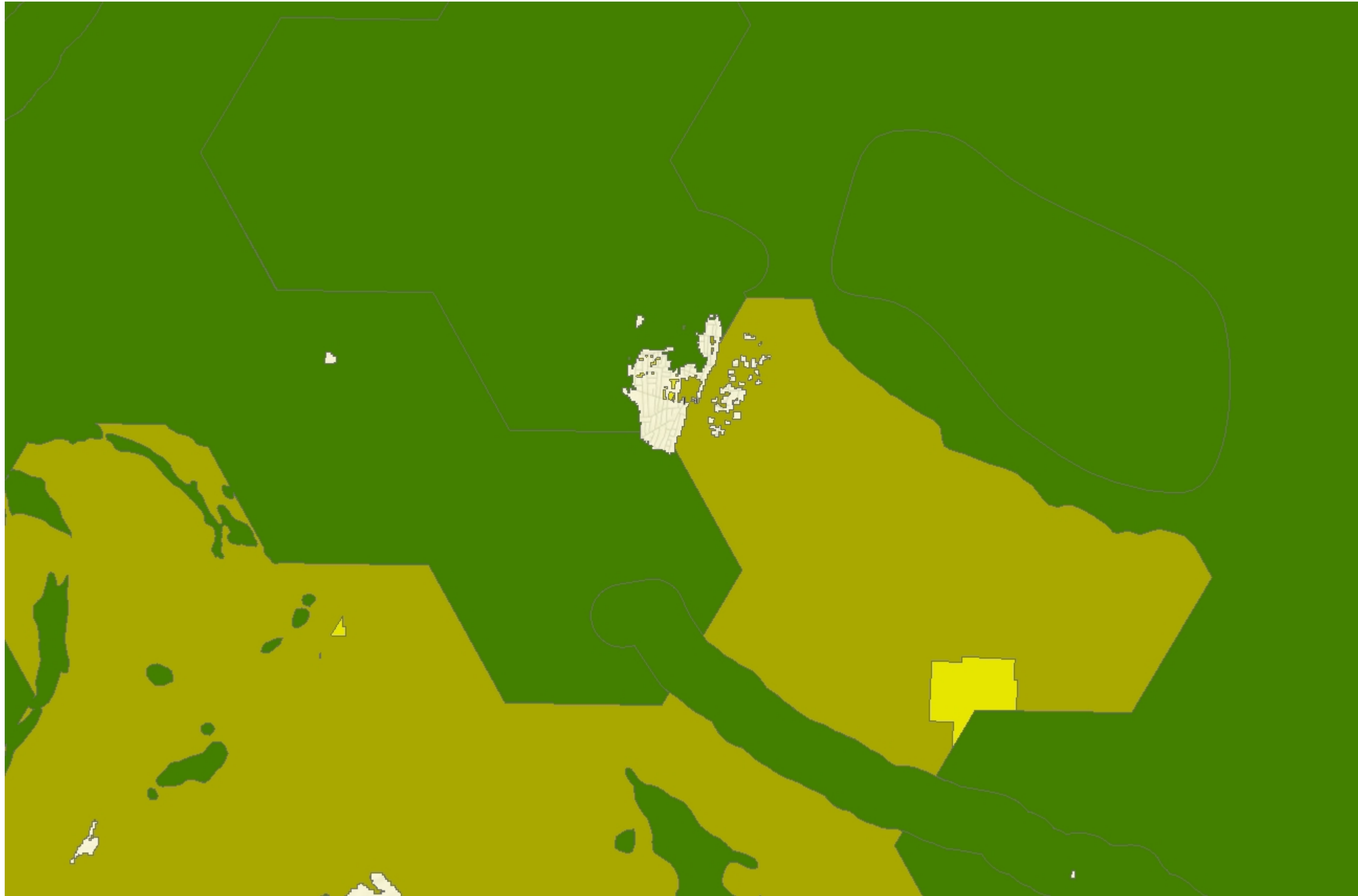


## 2016 Northern Cape Critical Biodiversity Areas

### Description

The proposed housing site at Pella falls within a CBA 2 area (Namakwa Biodiversity Sector Plan 2016)



### Legend

#### Northern Cape Critical Biodiversity Areas 2016

- Critical Biodiversity Area One
- Critical Biodiversity Area Two
- Ecological Support Area
- Other Natural Areas
- Protected Area

- South Africa town points
- South African parent farm cadaster
- Formal protected areas (NBA 2011)
- Informal protected areas (NPAES)
- Marine Protected Areas MPAs (NBA 2011)
- World Street Map
- Addo Biodiversity Conservation Plan
- Cape Winelands DMA Biodiversity Assessment
- Cape Town Biodiversity Network
- Central Karoo Biodiversity Assessment
- Eastern Cape Biodiversity Conservation Plan
- FSP Bergivier
- FSP Breede Valley
- FSP Cederberg
- FSP Hessequa
- FSP Langeberg
- FSP Matzikama
- FSP Mossel Bay
- FSP Saldanha Bay
- FSP Witzenberg

1: 72 224



3,7 0 1,83 3,7 Kilometers

