

Appendix 1_ Locality Maps

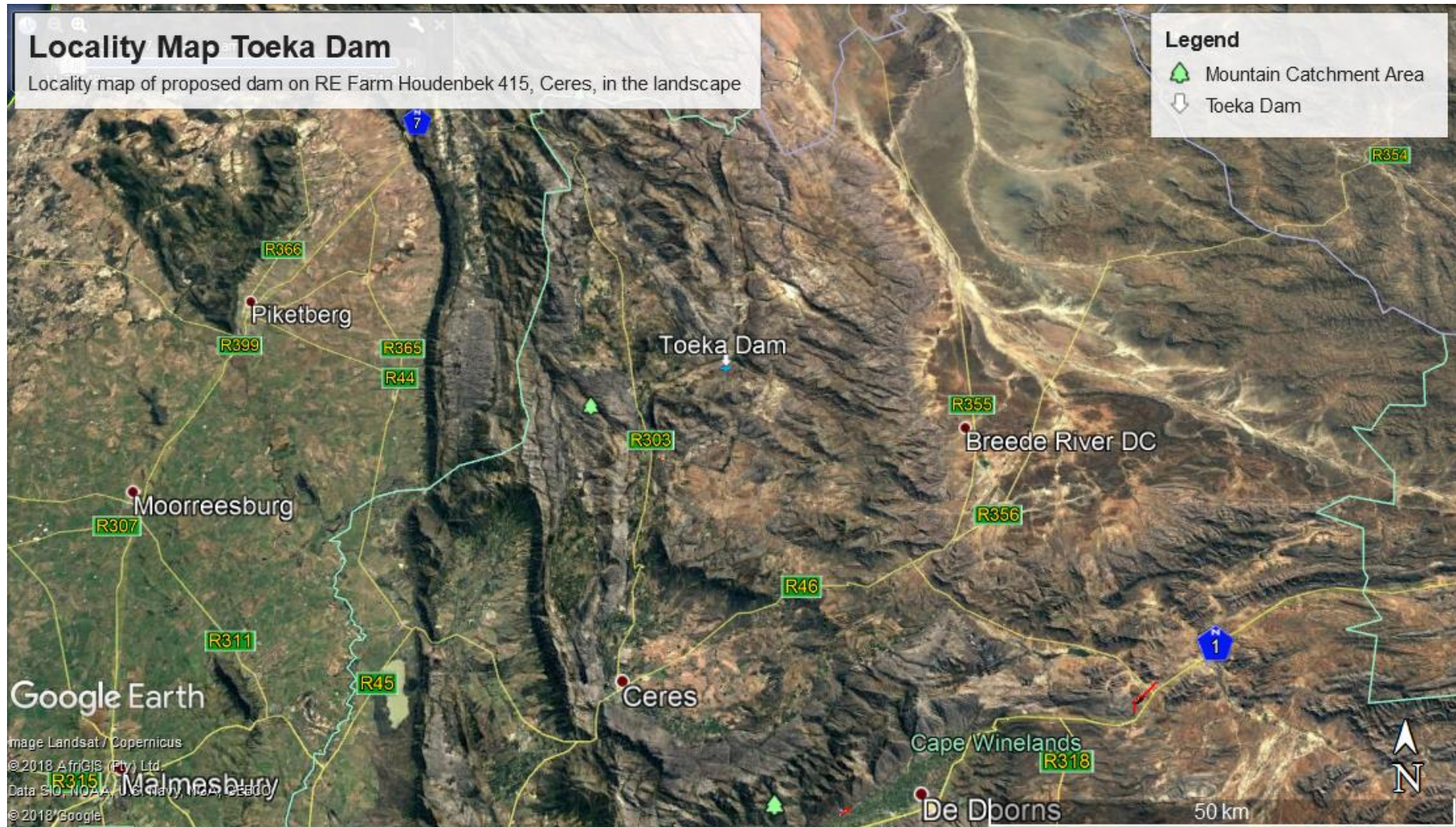


Figure 1: High level locality map

Appendix 1_ Locality Maps

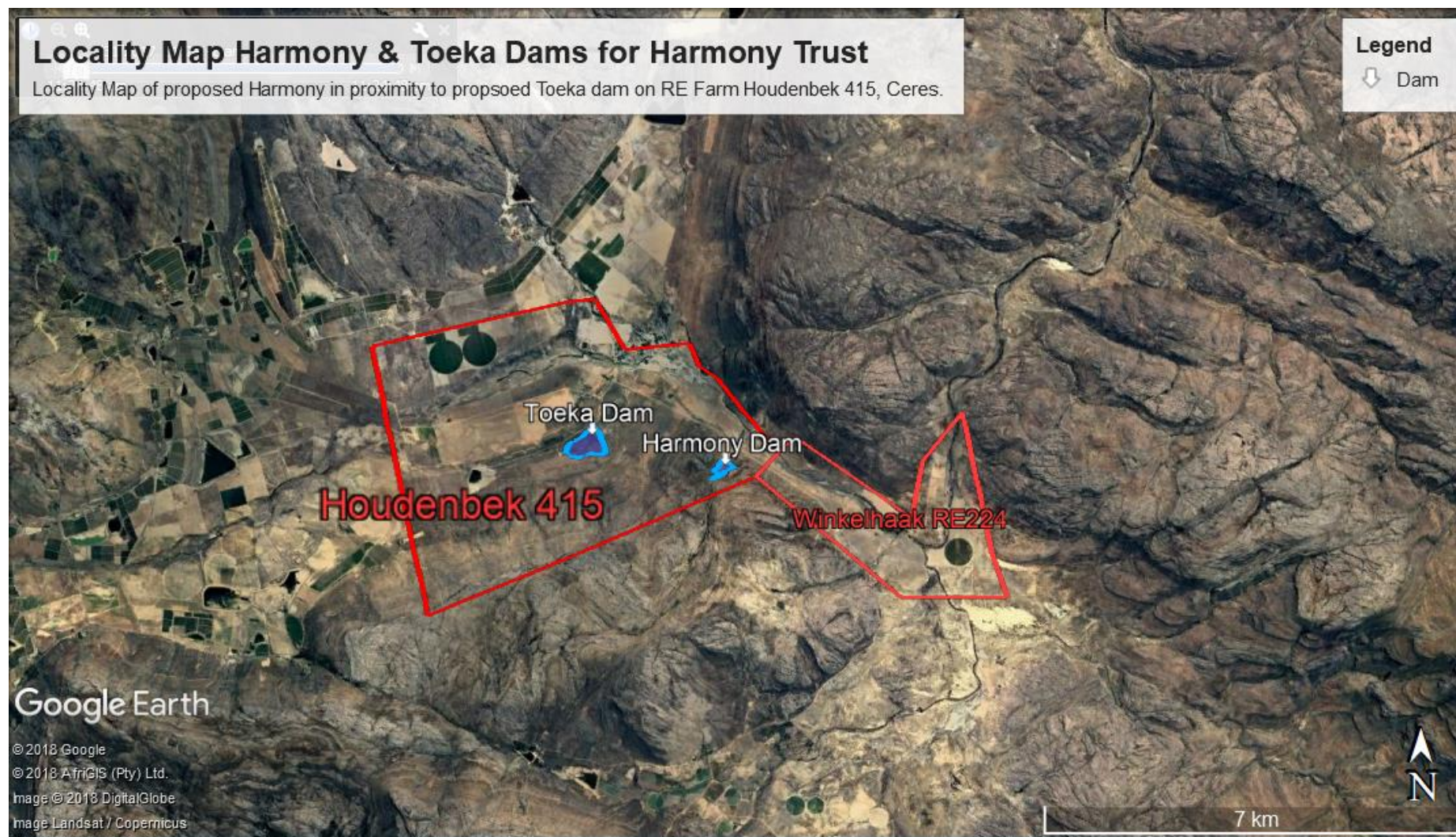


Figure 2: Locality map indicating the proposed Toeka dam (this application) and Harmony Dam (separate application) on RE Houdenbek 415. RE Houdenbek is owned by Morester Landgoed and Winkelhaak RE224 is owned by Harmony Trust.

Appendix 1_ Locality Maps



Figure 3: :Locality Map Map indicating the proposed Toeka (this application) and Harmony (sperate application) dam locations on Houdenberg RE415 belonging to Morester Landgoed in relation to Winkelhaak RE224 belonging to Harmony Trust. The pink polygon indicates the proposed subdivision.

Appendix 1_ Locality Maps



Figure 4: Locality indicating the existing pump station in the Houdenberg Bo-dam and the proposed pipeline feeding Toeka dam

Appendix 1_ Locality Maps

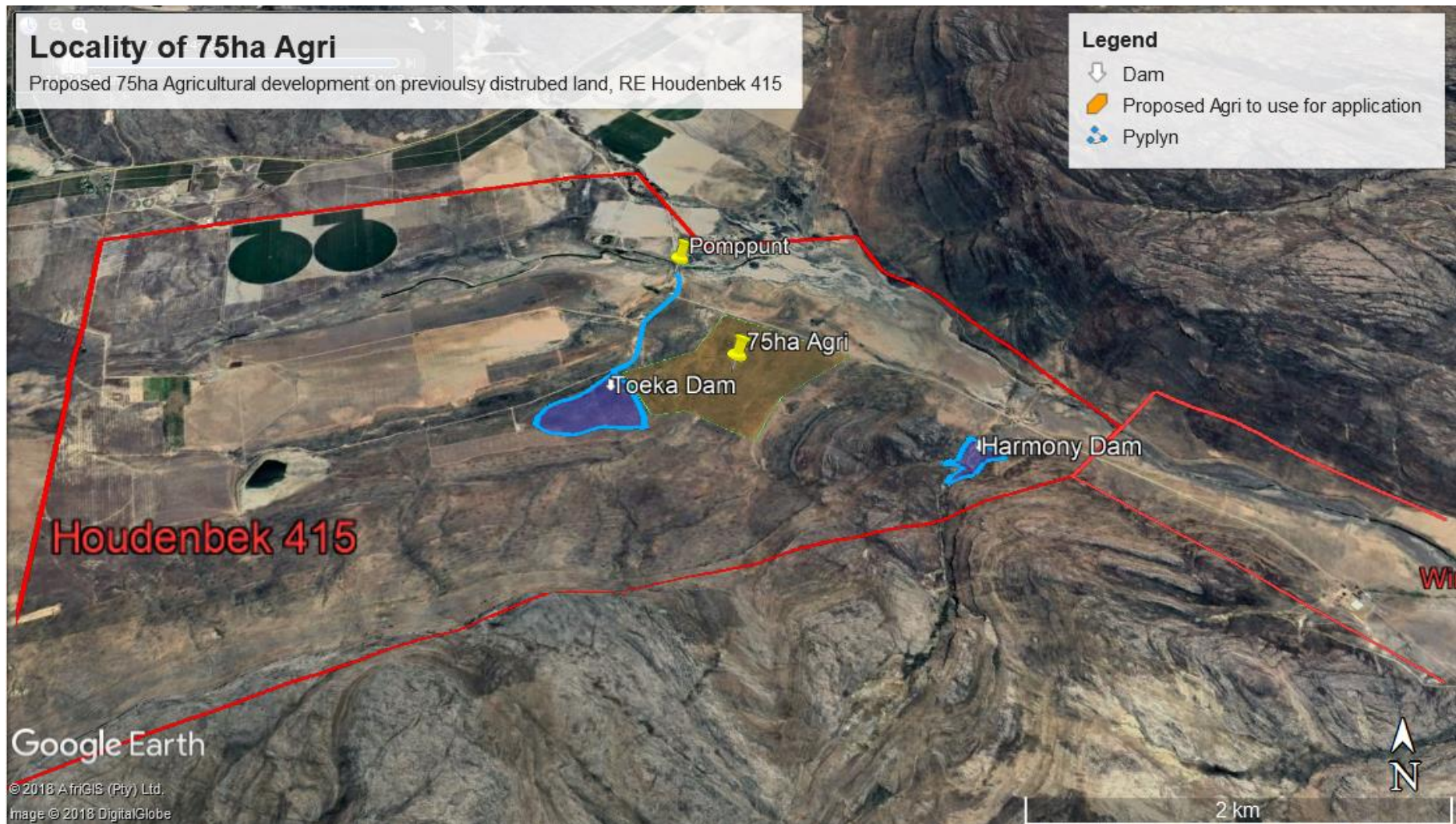


Figure 5: Locality map indicating the proposed 75ha Agri on previously ploughed land in relation to the proposed Toeka (this application) and Harmony (separate application) dams on RE Farm Houdenbek 415

Appendix 1_ Locality Maps

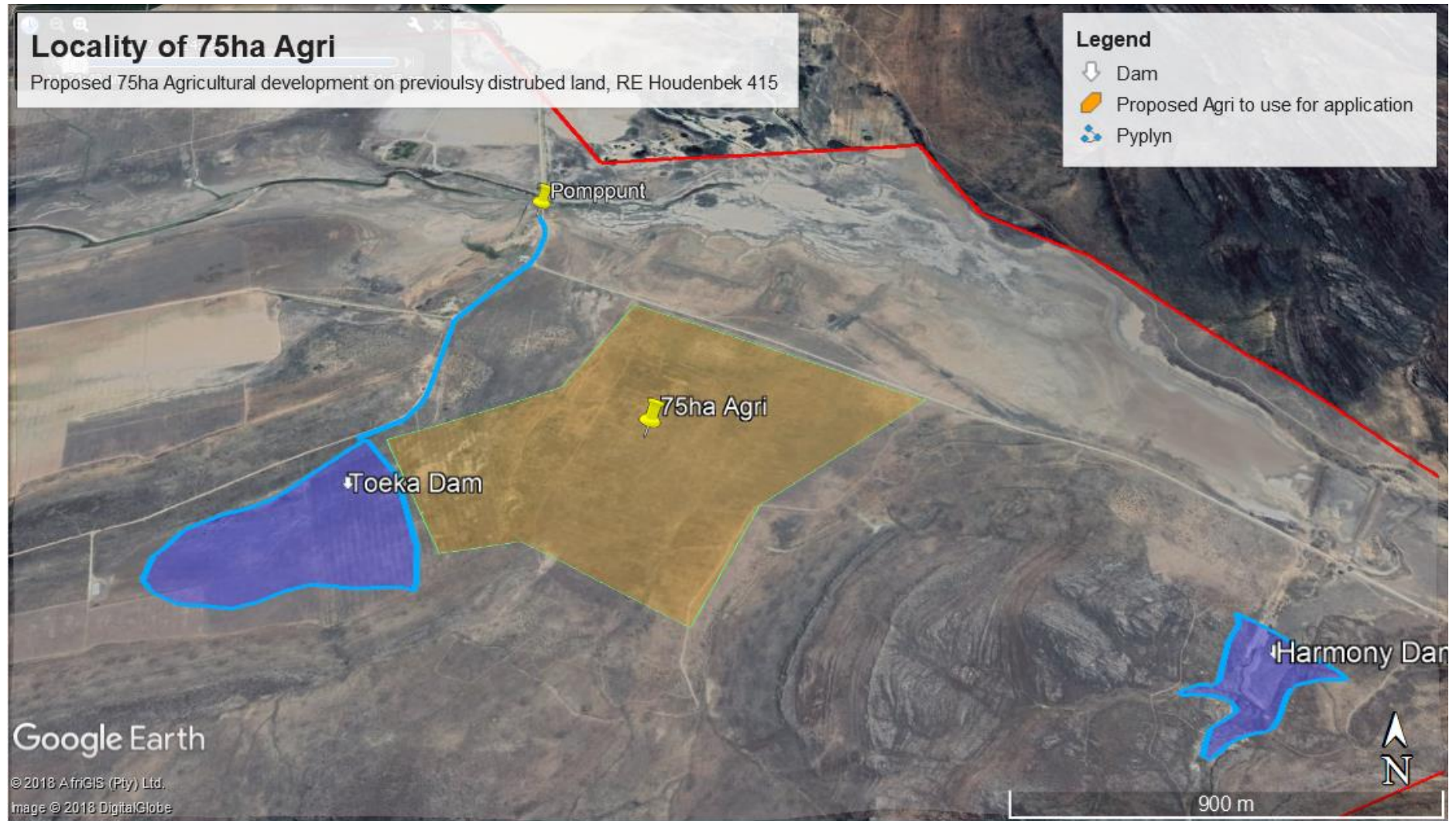


Figure 6: Locality map indicating the proposed 75ha Agri on previously ploughed land in relation to the proposed Toeka (this application) and Harmony (separate application) dams on RE Farm Houdenbek 415

Appendix 1_ Locality Maps



Figure 7: Google image indicating the proposed irrigation pipelines from the proposed Toeka dam (this application) and Harmony dam (separate application) to the proposed 75ha agricultural development. The red lines indicates the proposed new irrigation pipelines (both will be shorter than 1000m with a diameter smaller than 300mm). The brown and green lines indicates the existing irrigation pipeline routes.