

## Appendix 1\_Locality Maps



Figure 1: High level locality map



## Appendix 1\_Locality Maps

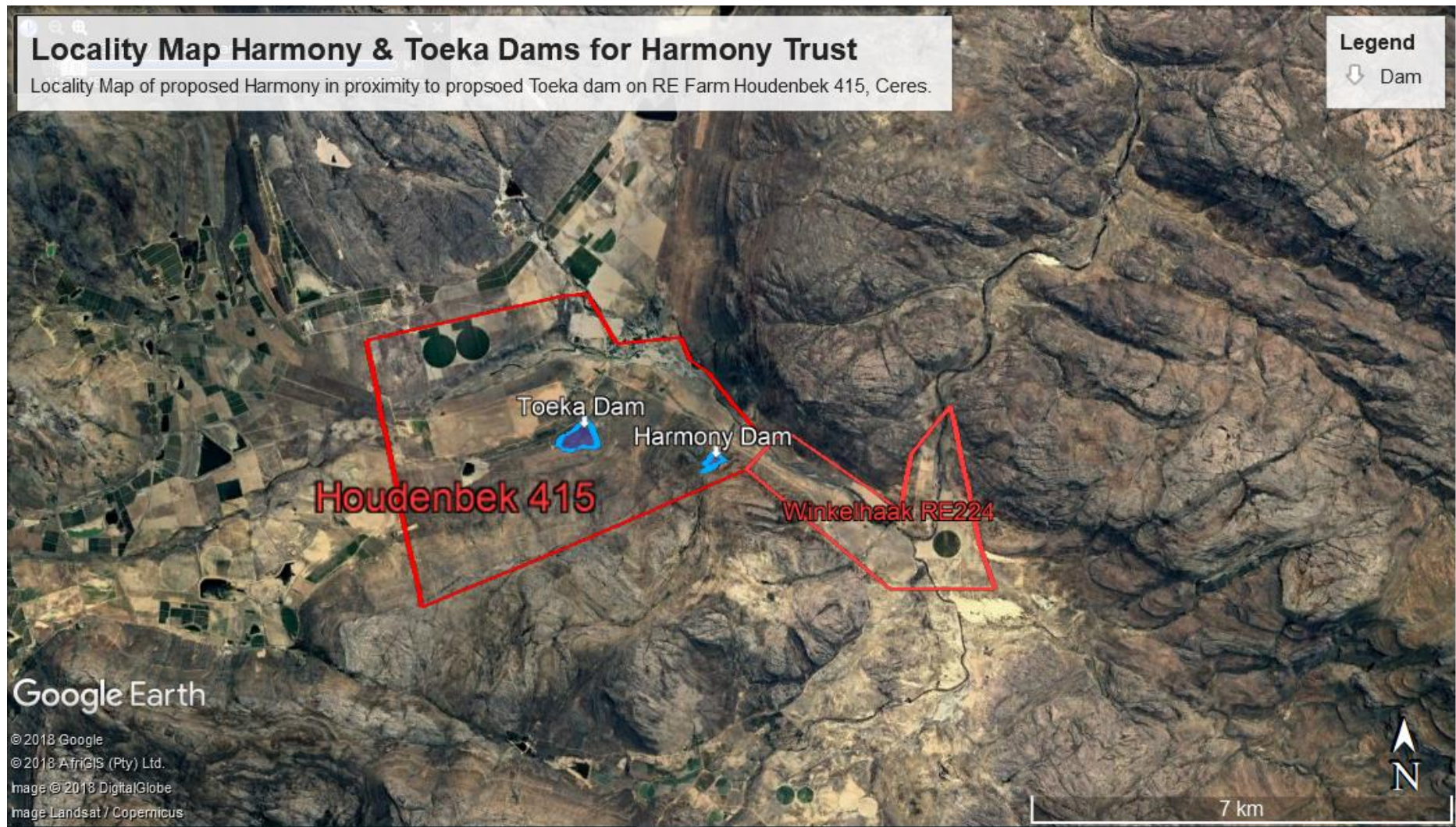


Figure 2: Locality map indicating the proposed Harmony Dam (this application) and Toeka dam (separate application) on RE Houdenbek 415. RE Houdenbek is owned by Morester Landgoed and Winkelhaak RE224 is owned by Harmony Trust.



## Appendix 1\_Locality Maps

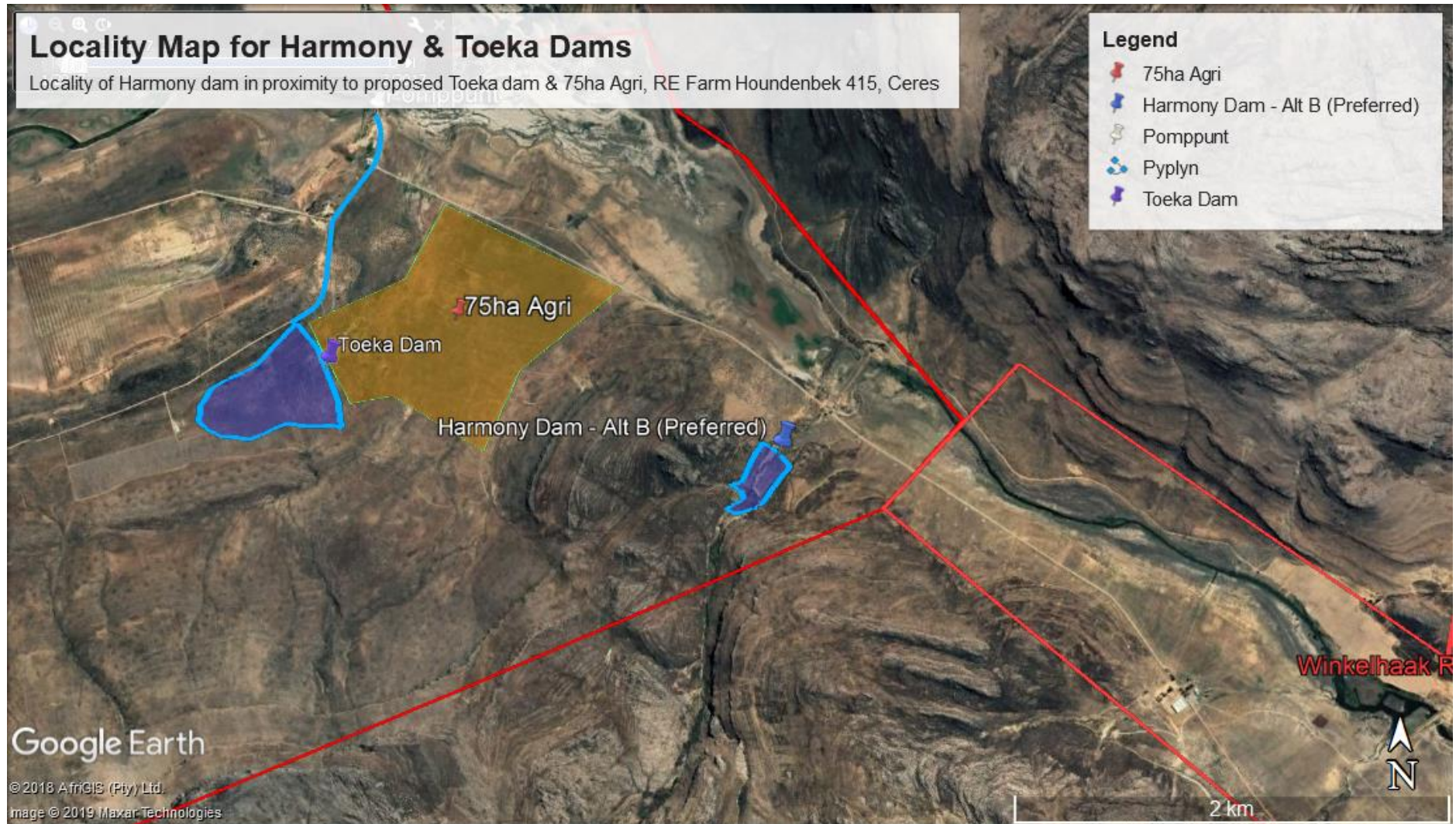


Figure 3: Locality Map indicating the proposed Harmony Dam (this application) in proximity to the proposed Toeka dam (separate application) on RE Farm Houdenbek 415, Ceres.



## Appendix 1\_Locality Maps



Figure 4: Locality Map indicating the proposed Harmony (this application) and Toeka (separate application) dam location on RE Farm Houdenbek 415 belonging to Morester Landgoed in relation to Winkelhaak RE224 belonging to Harmony Trust. The pink polygon indicates the proposed subdivision.



## Appendix 1\_Locality Maps

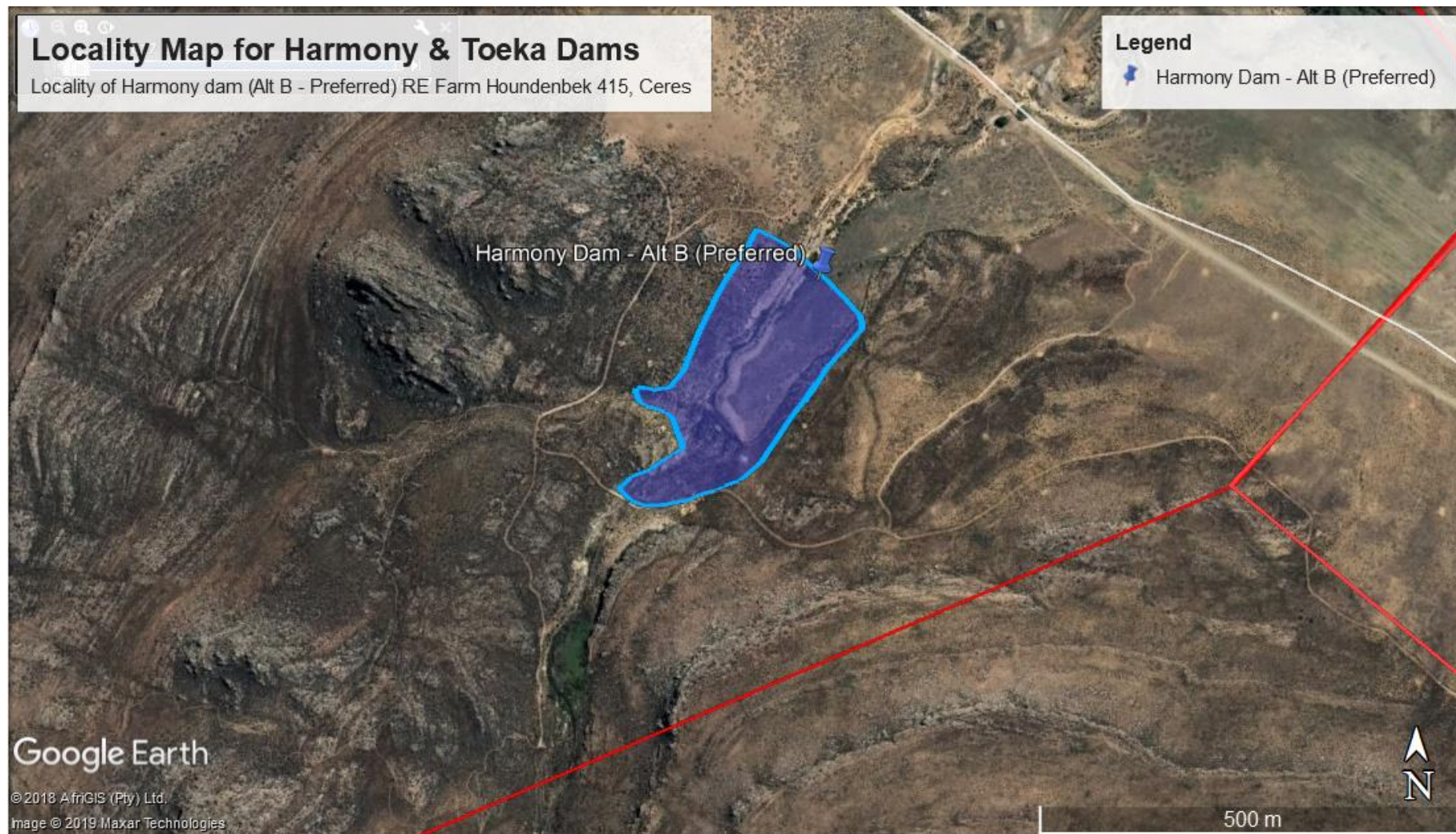


Figure 5: Locality Map indicating the preferred location for Harmony dam to avoid heritage resources



## Appendix 1\_Locality Maps

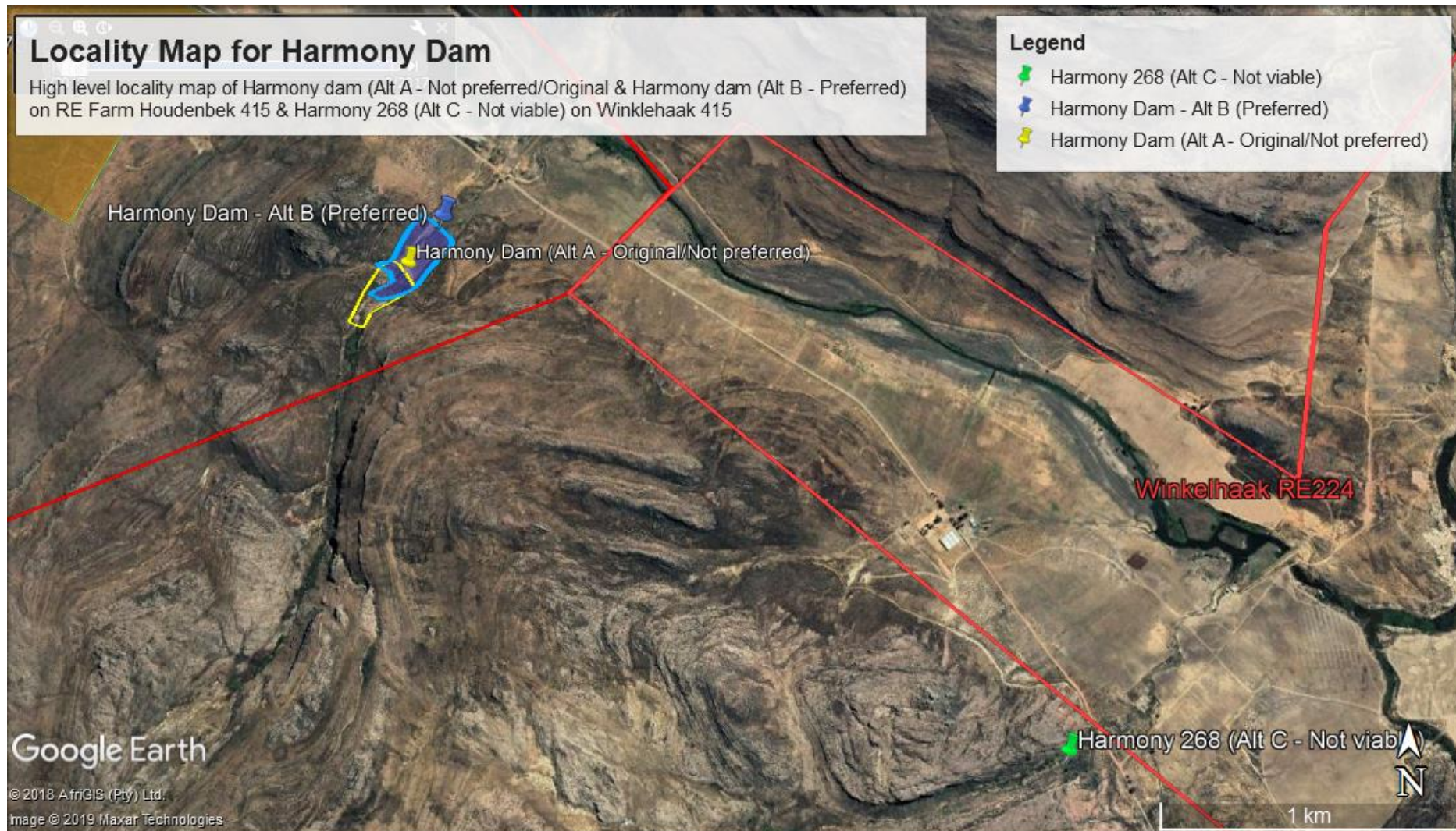


Figure 6: High level locality map of alternatives investigated for the proposed Harmony Dam. Harmony 268 is not considered a viable option from an engineering point of view and will therefore not be evaluated further



## Appendix 1\_Locality Maps

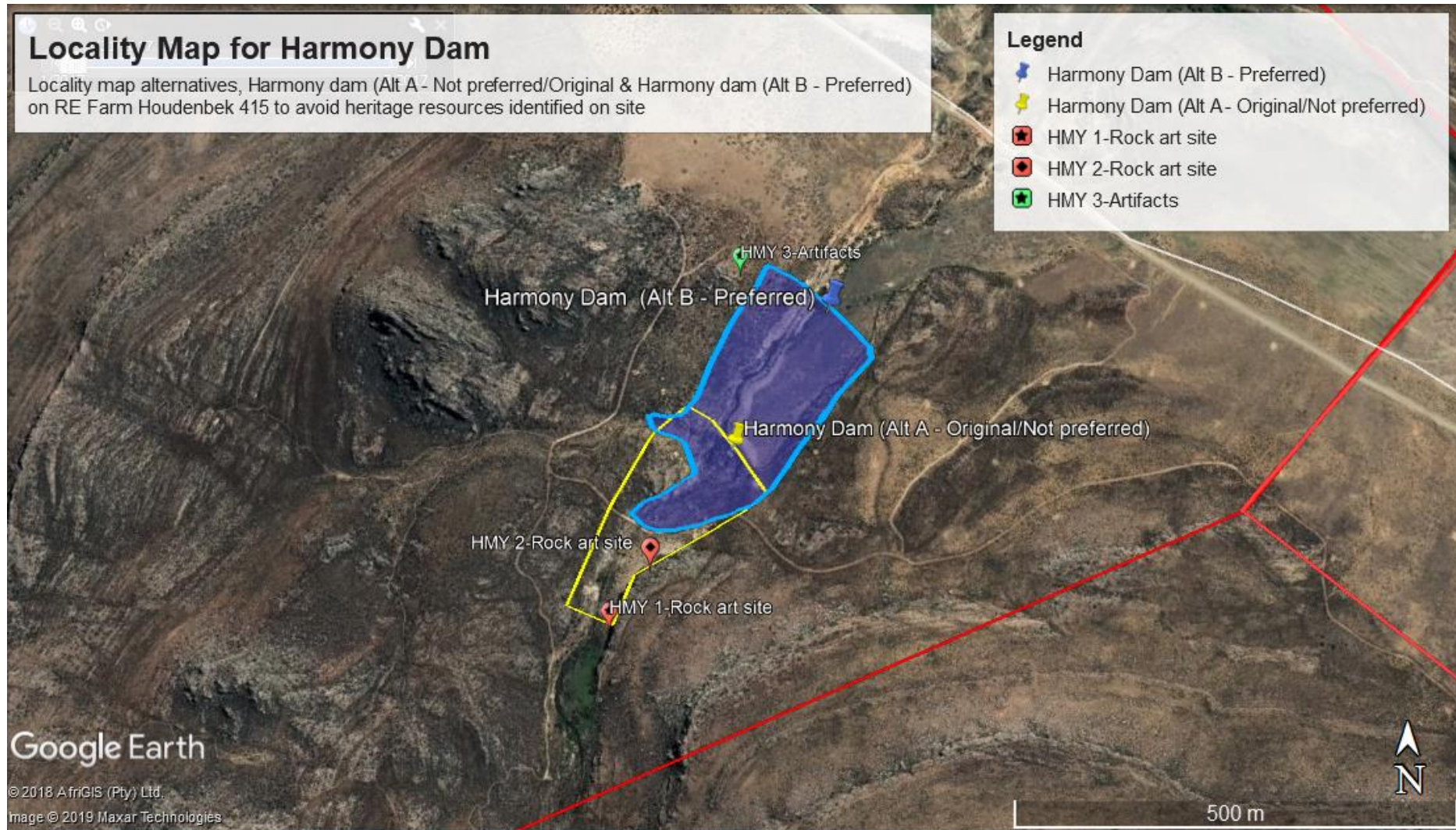


Figure 7: Locality map of dam site alternatives investigated. Harmony dam - Alt A was the original dam position investigated and is not preferred as the high-water supply will impact on heritage resources identified on site. Heritage resources are indicated as HMY1 – rock art site; HMY2 – rock art site and HMY3 – Artifacts. It was proposed that the dam wall be moved north to Harmony dam Alt B to avoid heritage resources .



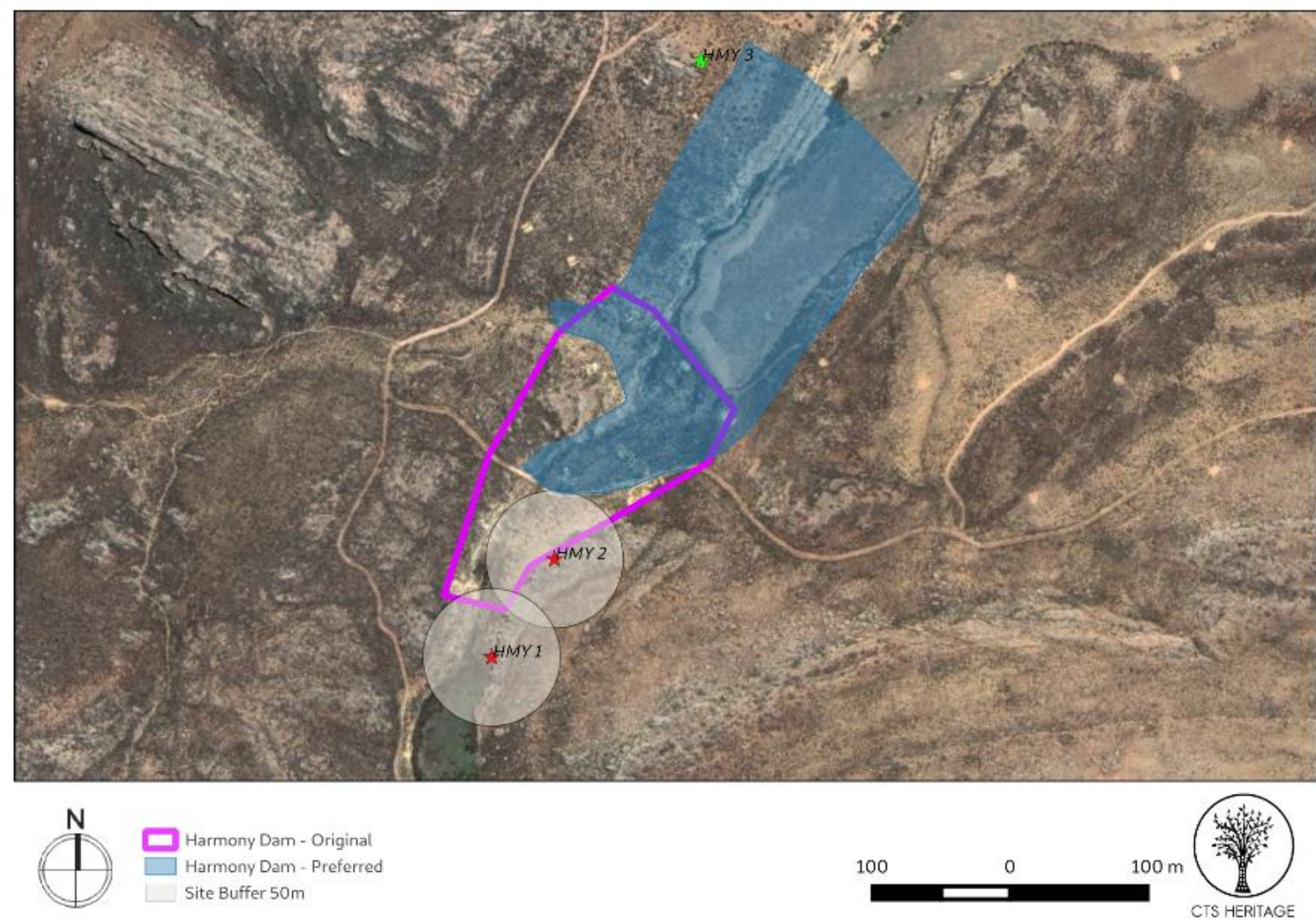


Figure 8: Map from CTS Heritage approving the locality of the proposed Harmony 3 (Alt B - Preferred) indicating the proposed 50m buffer zones



## Appendix 1\_Locality Maps



Figure 9: Google image indicating the proposed irrigation pipelines from the proposed Toeka dam (this application) and Harmony dam (separate application) to the proposed 75ha agricultural development. The red lines indicates the proposed new irrigation pipelines (both will be shorter than 1000m with a diameter smaller than 300mm). The brown and green lines indicates the existing irrigation pipeline routes.



## Appendix 1\_Locality Maps

