

Appendix A – Locality Maps (using Google Earth)

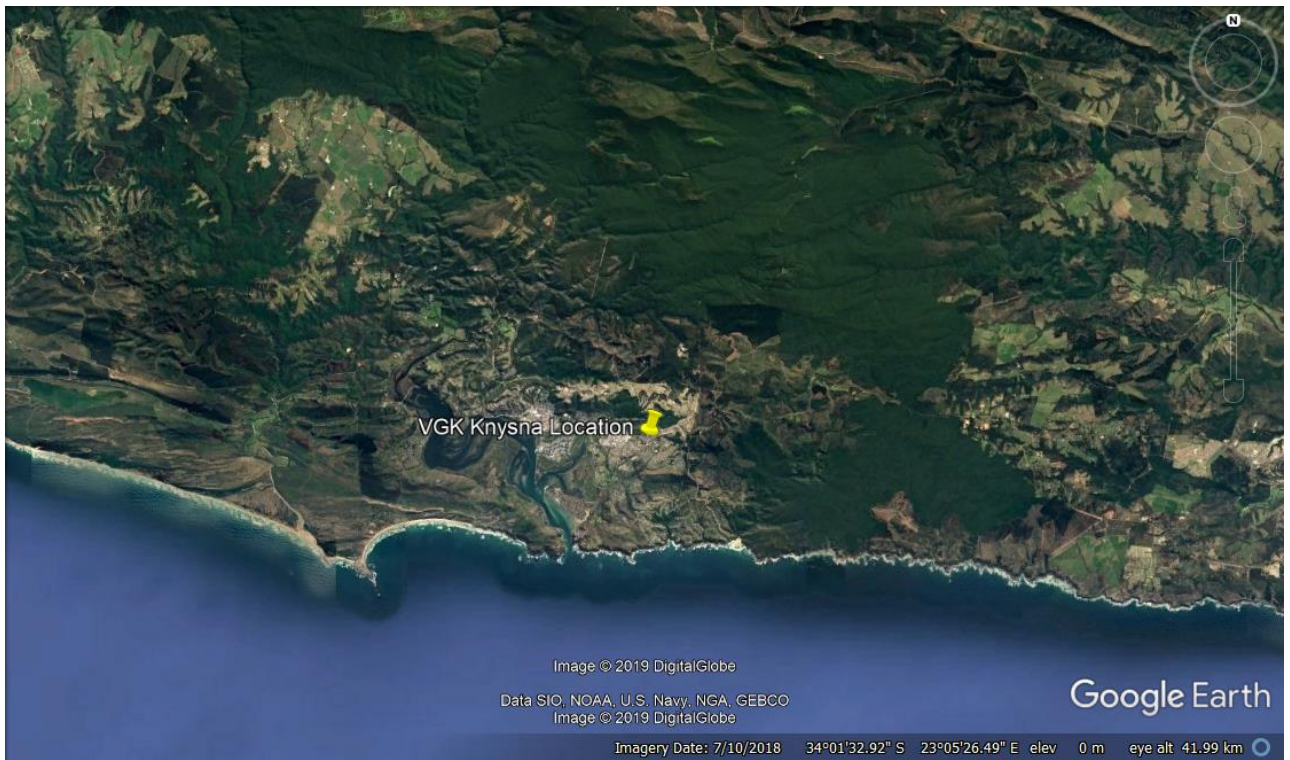


Figure 1: Indication (yellow pin) of proposed site for 25m high telecommunications monopole tree tower on Erf. 3244, Hornlee, Knysna. Property belongs to Verenigende Gereformeerde Kerk, Knysna (VGK Knysna)

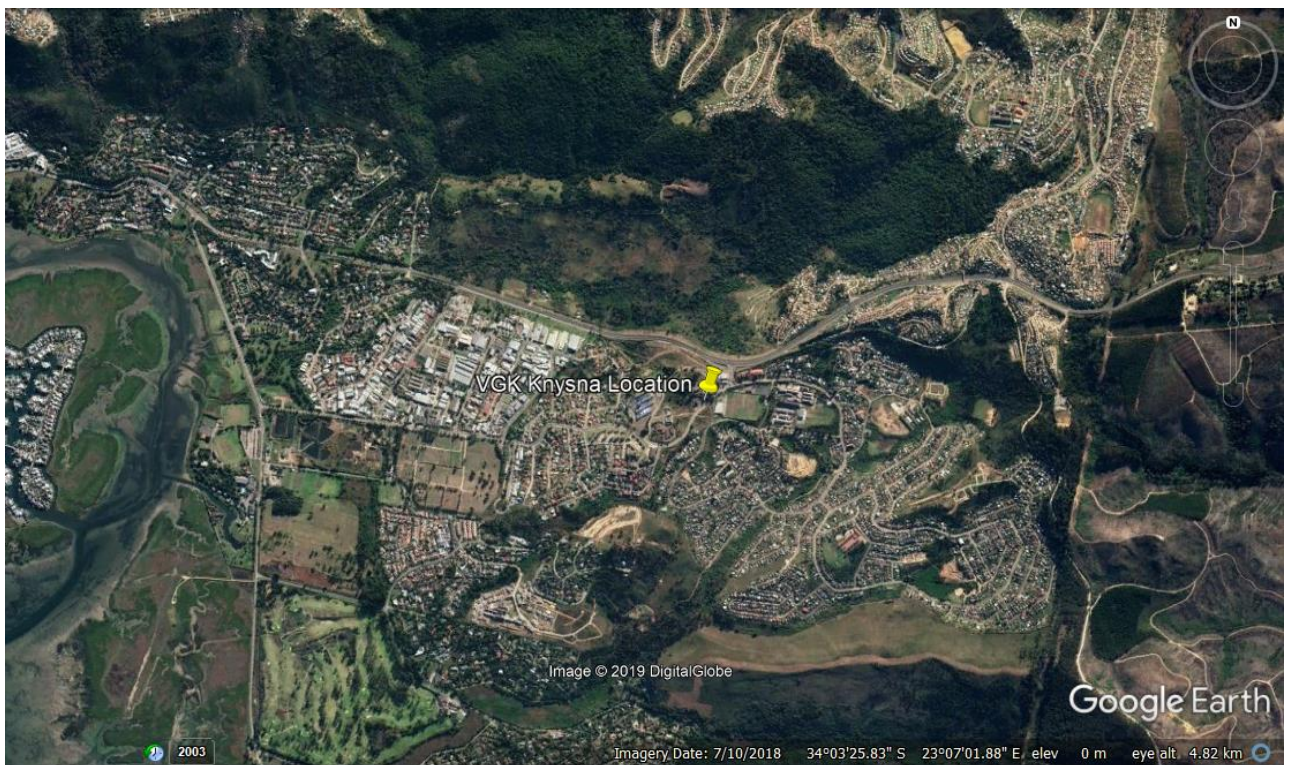


Figure 2: Indication (yellow pin) of proposed site for 25m high telecommunications monopole tree tower within VGK Knysna property (Erf. 3244 off Vigilance Drive, Hornlee, Knysna).



Figure 3: Proposed site for 25m high telecommunications monopole tree tower within VGK Knysna property off Vigilance Drive (corner of Erf. 3244, Hornlee, Knysna).

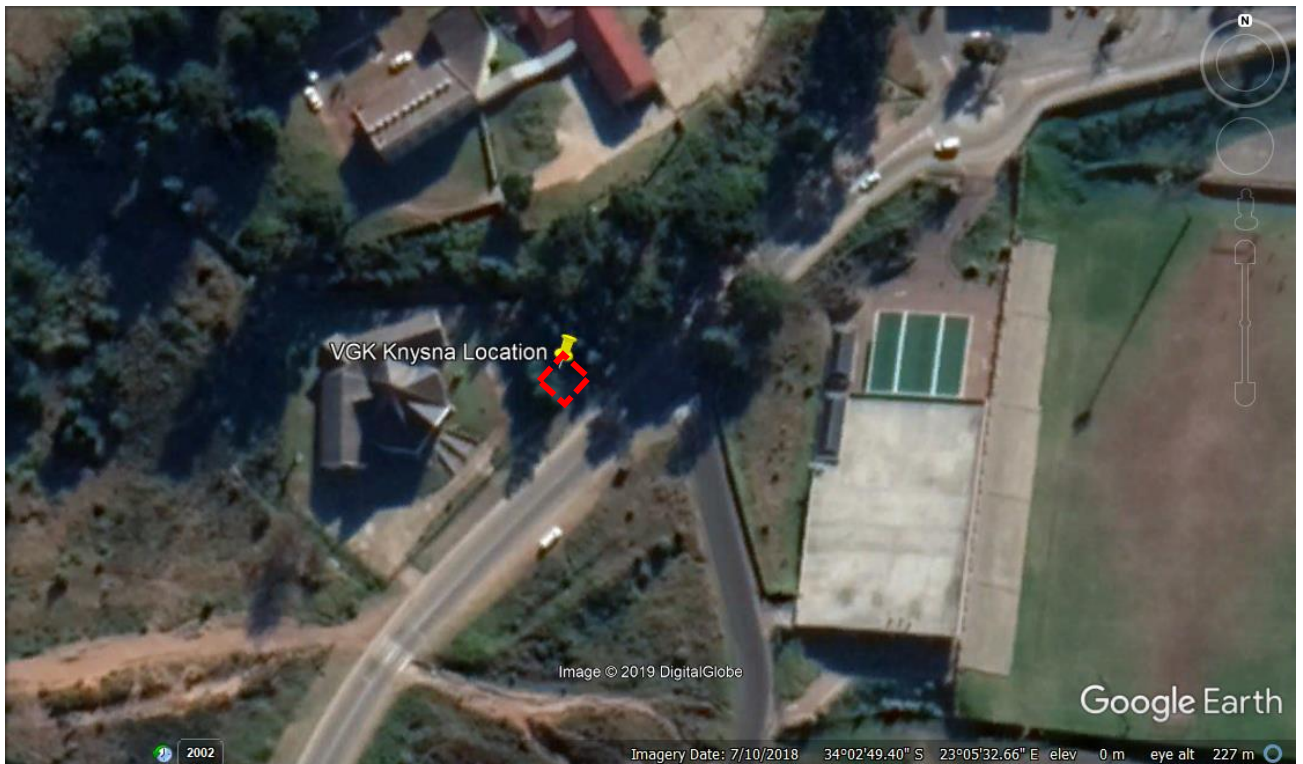


Figure 4: Proposed site for 25m high telecommunications monopole tree tower within VGK Knysna property off Vigilance Drive (corner of Erf. 3244, Hornlee, Knysna). Development footprint (approximately 10,6m x 10,6m or 112m²) indicated with red outline.



Figure 5: Proposed site for 25m high telecommunications monopole tree tower within VGK Knysna property off Vigilance Drive (corner of Erf. 3244, Hornlee, Knysna). Development footprint lies approximately 170m from N2 national highway.