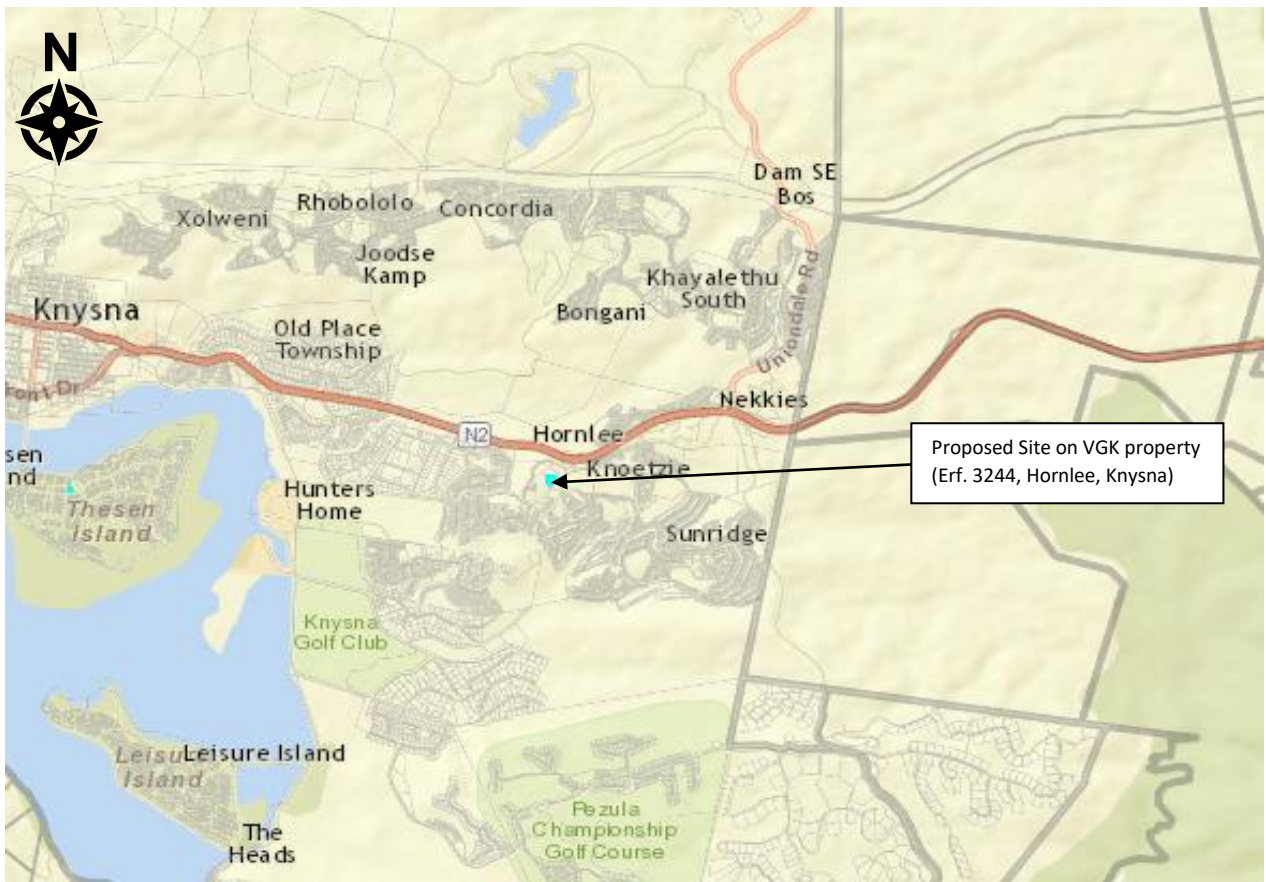


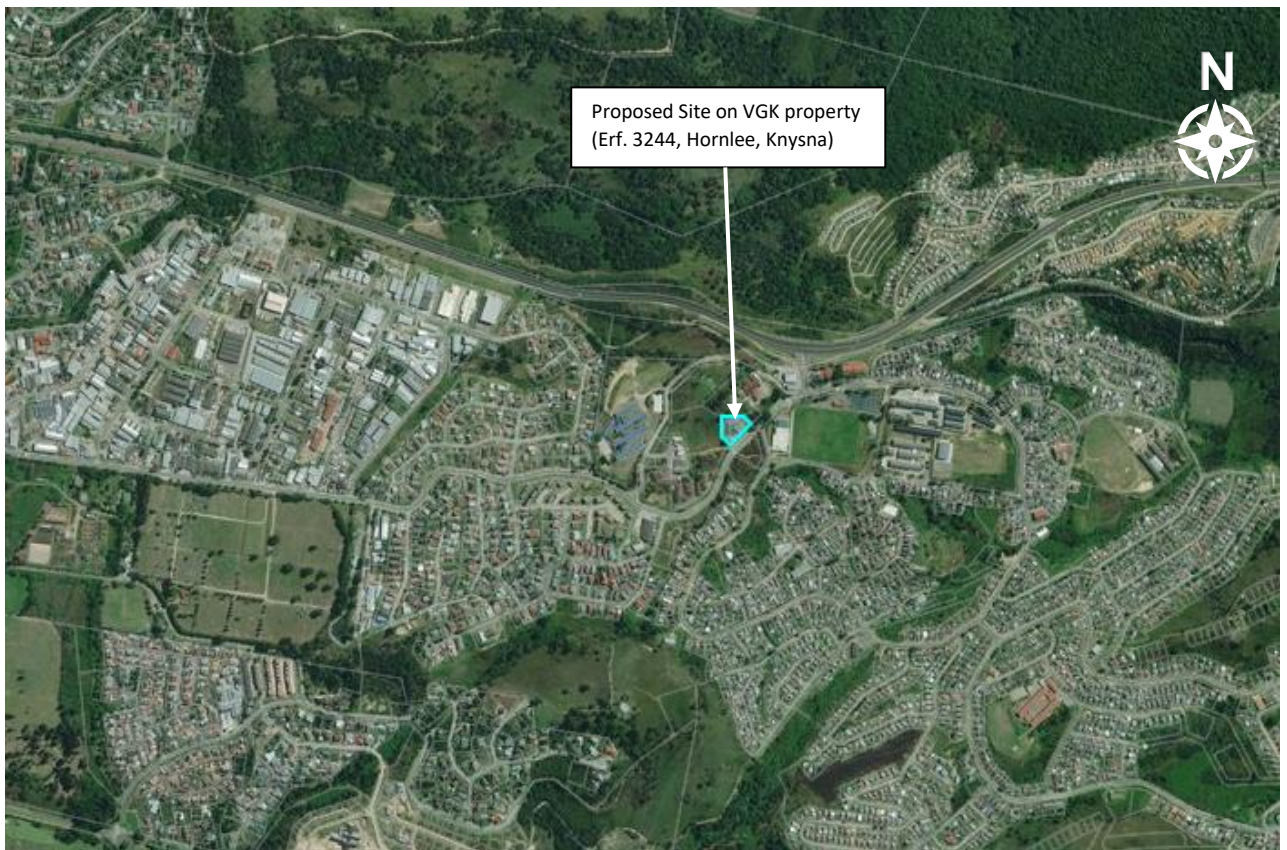
## Appendix A – Locality Maps (using DEA Scoping Tool)



**Figure 1:** Indication of proposed site for 25m high telecommunications monopole tree tower on Erf. 3244, Hornlee, Knysna. Property belongs to Verenigende Gereformeerde Kerk, Knysna (VGK Knysna).



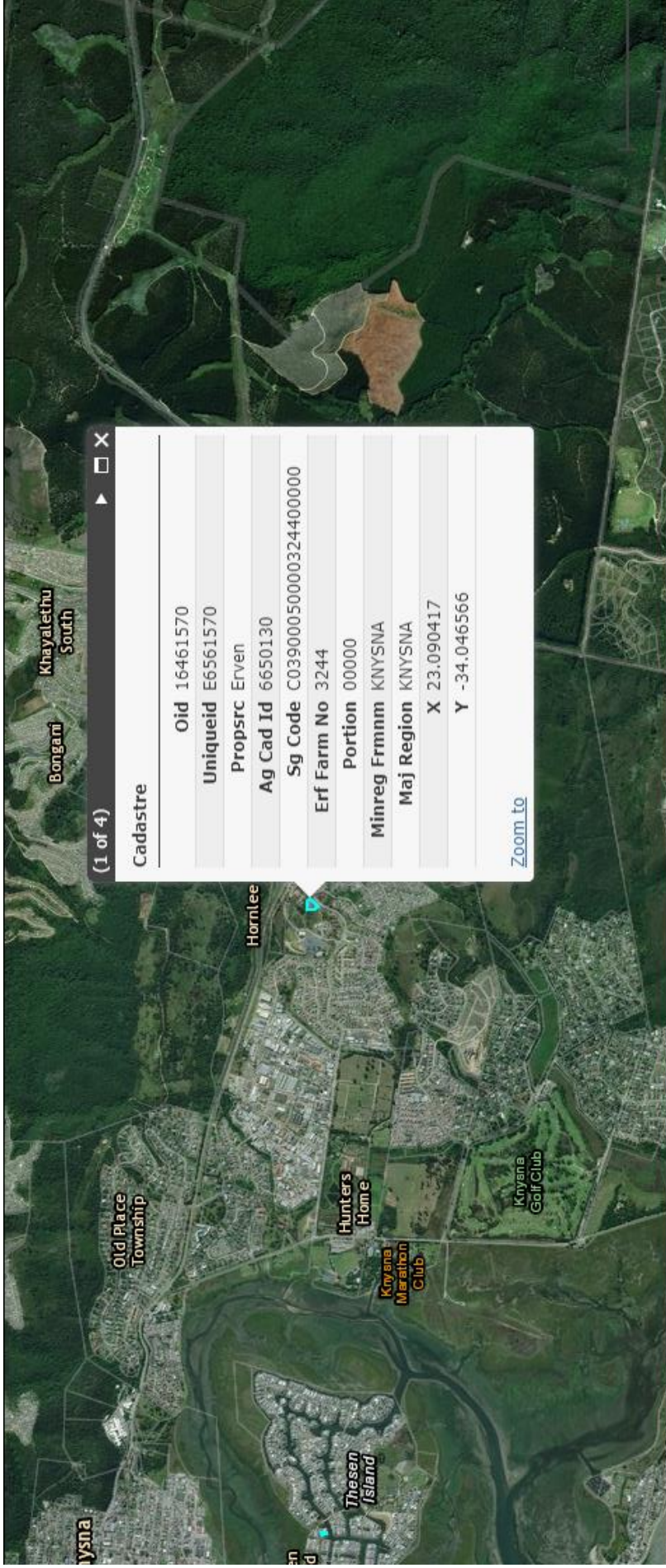
**Figure 2:** Indication (blue outline) of proposed site for 25m high telecommunications monopole tree tower within VGK Knysna property (Erf. 3244 off Vigilance Drive, Hornlee, Knysna).



**Figure 3:** Proposed site for 25m high telecommunications monopole tree tower within VGK Knysna property off Vigilance Drive (corner of Erf. 3244, Hornlee, Knysna). Total site/erf outlined in blue.



**Figure 4:** Proposed site for 25m high telecommunications monopole tree tower within VGK Knysna property off Vigilance Drive (corner of Erf. 3244, Hornlee, Knysna). Development footprint (approximately 10,6m x 10,6m or 112m<sup>2</sup>) indicated in red.



**Figure 5:** Cadastre information for proposed site for 25m high telecommunications monopole tree tower within VGK Knysna property off Vigilance Drive (corner of Erf. 3244, Hornlee, Knysna). Development footprint (approximately 10,6m x 10,6m or 112m<sup>2</sup>).