

SITE PHOTOGRAPHS: UNLAWFUL DEVELOPMENT OF A 25M HIGH TELECOMMUNICATION MAST ON PORTION 47 OF FARM 222, CRAMMIX ROAD, BRACKENFELL, WESTERN CAPE (17/01/2019)



Figure 1: A view of the site (red arrow) as viewed from the access road. Looking in a north-western direction.



Figure 2: A view of the telecommunication base station as viewed from the access road. Looking in a north-western direction.



Figure 3: A view of the telecommunication base station as viewed from the access road. Looking in a northern direction.



Figure 4: A view of the telecommunication base station as viewed from the access road. Looking in a north-western direction.



Figure 5: A view of the telecommunication base station as viewed from the access road. Looking in a northern direction.



Figure 6: A view of the telecommunication base station as viewed from the access road. Looking in a western direction.



Figure 7: A view of the access road and the proposed site. Looking in a southern direction.

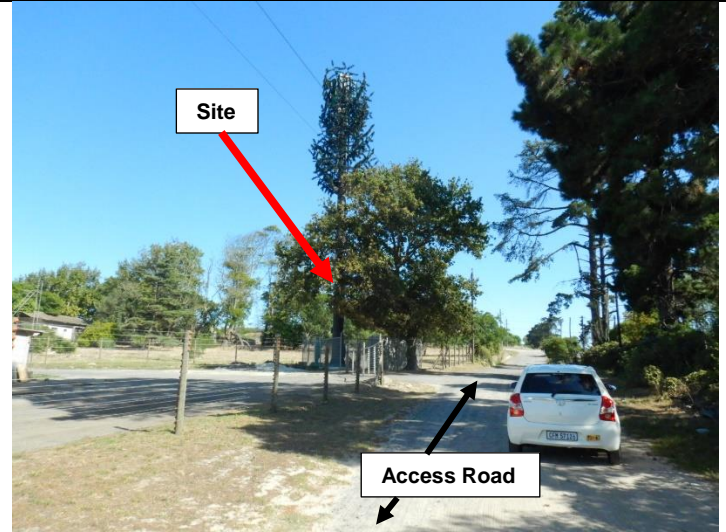


Figure 8: A view of the access road and the site. Looking in a northern direction.