

WCBSP for Proposed Louw's Bos Public Cemetery and Memorial Park

Description

Western Cape Biodiversity Spatial Plan for Proposed Louw's Bos Public Cemetery and Memorial Park preferred and alternative development sites.

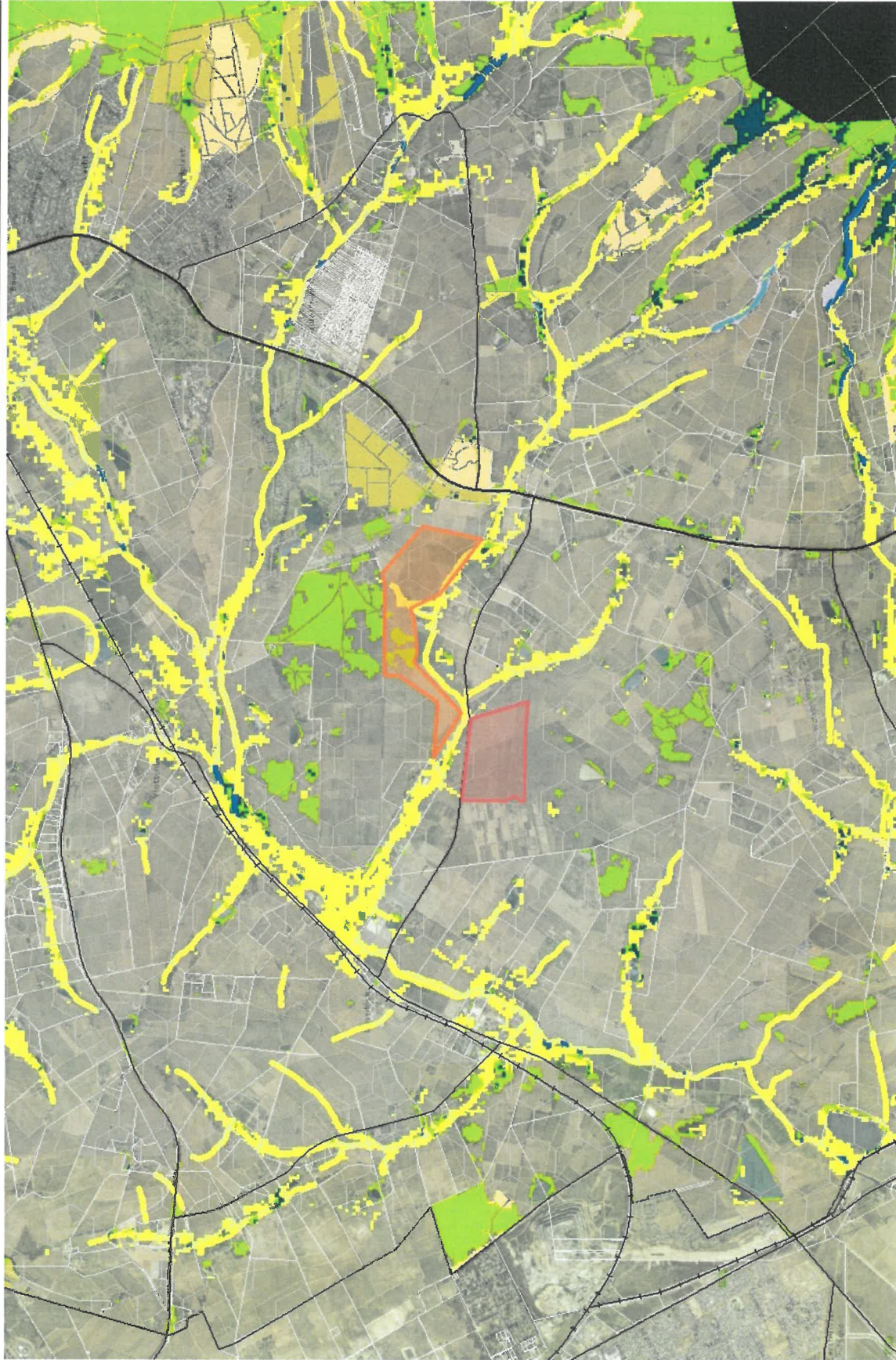
Preferred site, indicated in red, lies to the south of Annandale Road (no biodiversity sensitive areas in site).

Alternate site, indicated in orange, lies to the north of Annandale Road (biodiversity and watercourse / wetland sensitive areas occur in site which have potential to be included as park / conservation features within proposed development).

Legend

- National roads
- Secondary roads
 - ARTERIAL ROUTE
 - MAIN ROAD
 - SECONDARY ROAD
- Railways
- Local municipalities
- Farm boundaries
- Stellenbosch CBA1
 - CBA: Terrestrial
 - CBA: Forest
 - CBA: River
 - CBA: Estuary
 - CBA: Wetland
- Stellenbosch CBA2
 - CBA2: Terrestrial
 - CBA2: Aquatic
- Stellenbosch ESA1
 - ESA: Aquatic
 - ESA: Terrestrial
- Stellenbosch ESA2
 - ESA2: Restore from plantation or high density IAP
 - ESA2: Restore from other land use
 - ESA2: Restore where appropriate (see CT data)
- Stellenbosch ONA
- Stellenbosch PA

1: 50 000



This map is a user generated static output from an internet mapping site and is for reference only. Data layers that appear on this map may or may not be accurate, current, or otherwise reliable.

THIS MAP IS NOT TO BE USED FOR NAVIGATION

Critical Biodiversity & Ecological Areas

Legend

BSP ESA: Restore

ESA2: Restore from plantation or high density IAP

ESA2: Restore from other land use

ESA2: Restore where appropriate (CT)

BSP ESA

ESA: Aquatic

ESA: Terrestrial

BSP CBA: Degraded

CBA2: Aquatic

CBA2: Terrestrial

BSP CBA

CBA: Terrestrial

CBA: Terrestrial (CT)

CBA: Forest

CBA: River

CBA: Estuary

CBA: Wetland

CBA: Aquatic (CT)

Scale: 1:36 112

Date created: January 20, 2019



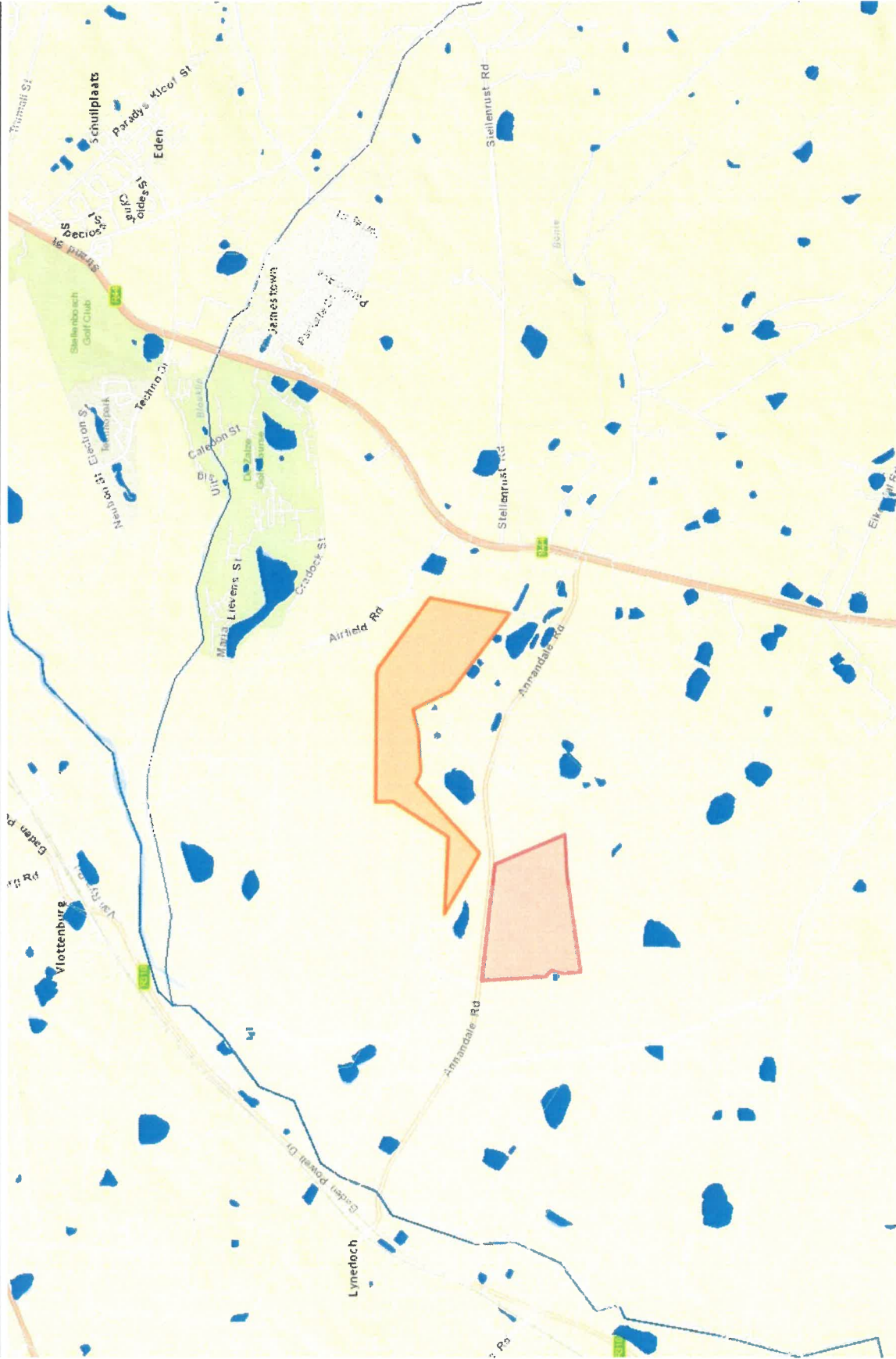
Western Cape
Government

Agriculture



Esri, HERE, Garmin, © OpenStreetMap contributors, and the GIS user community
Source: Esri, DigitalGlobe, GeoEye, Earthstar Geographics, CNES/Airbus DS

NFEPA for Proposed Louw's Bos Public Cemetery and Memorial Park



Description

National Freshwater Ecosystem Priority Areas for Proposed Louw's Bos Public Cemetery and Memorial Park preferred and alternative development sites.

Preferred site, indicated in red, lies to the south of Ammandale Road (no biodiversity sensitive areas in site).

Alternate site, indicated in orange, lies to the north of Ammandale Road (biodiversity and watercourse / wetland sensitive areas occur in site which have potential to be included as park / conservation features within proposed development).

Legend

- Local municipalities
- Farm boundaries
- Water management areas
- Sub water management areas
- Fish points
- Fish sanctuary, other fish
- Wetland cluster
- NFEPA rivers
- 1
- 5
- 10
- Formal land-based (NBA 2011)
- Informal land-based (NPAES)
- Marine - MPA (NBA 2011)
- National wetlands map 4 (NFEPA wetland m - Estuaries)
- Wetland NFEPA wetlands map
- Wetland and estuary FEPA
- River FEPAS
- River FEPA and associated sub-quaternary catchment
- Fish Support Area and associated sub-quaternary catchment
- Phase 2 FEPA and associated sub-quaternary catchment
- Upstream management area
- World Street Map

1: 36 112



This map is a user generated static output from an internet mapping site and is for reference only. Data layers that appear on this map may or may not be accurate, current, or otherwise reliable.

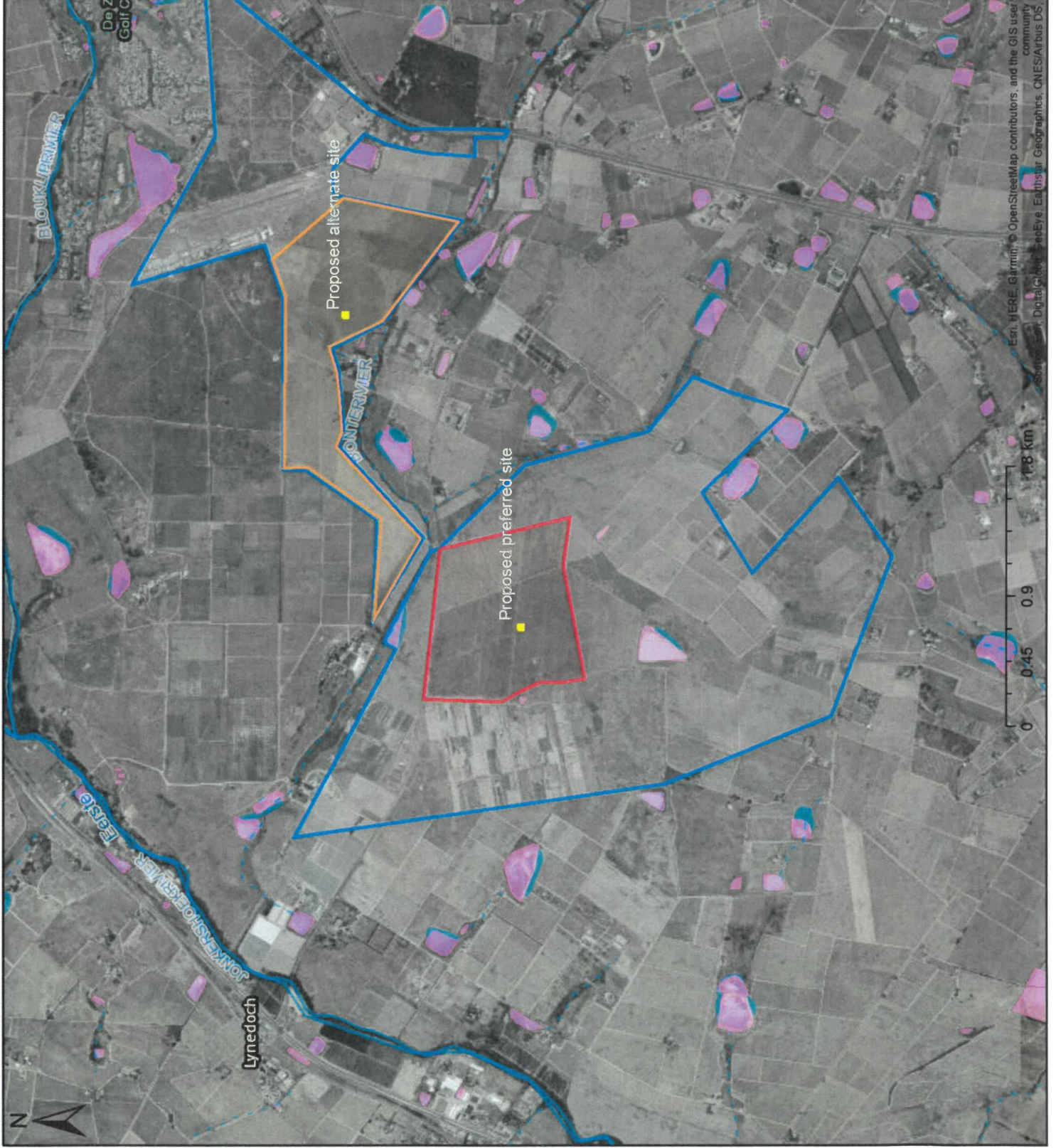
THIS MAP IS NOT TO BE USED FOR NAVIGATION

1,8
0,92
0
1,8 Kilometers

Rivers and Wetlands

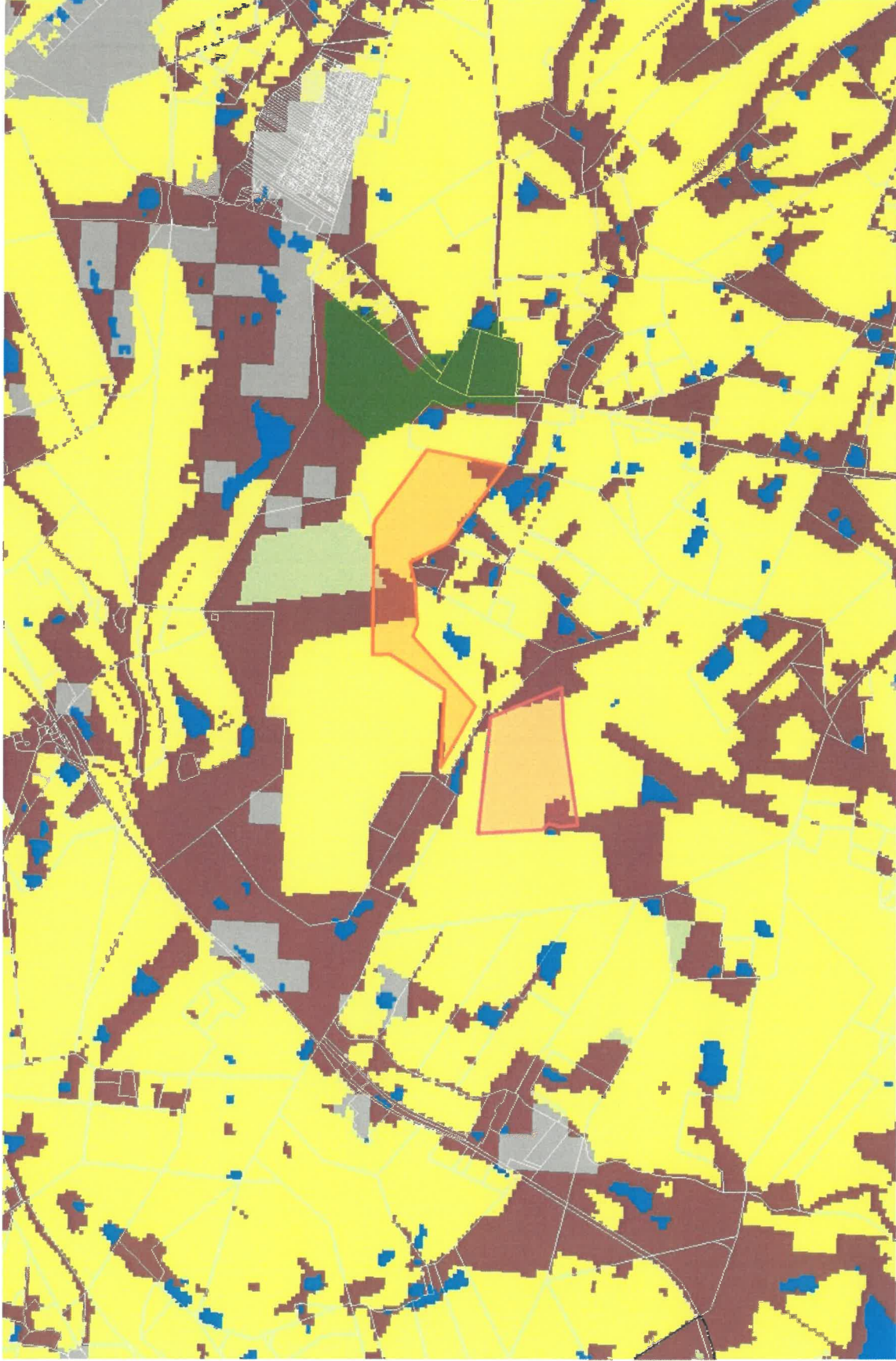
- Legend**
- Rivers**
- Dry Water Course
 - - Non-Perennial
 - Perennial
 - Rapids
 - Waterfall
- Rivers (Strahler Stream Order)**
- 5
 - 4
 - 3
 - 2
 - 1
- Wetlands (NFEPA)**
- Artificial
 - Estuaries
 - Natural

Scale: 1:36 112
 Date created: January 19, 2019



Est. HERE, Garmin, © OpenStreetMap contributors, and the GIS user community
 Source: DigitalGlobe, GeoEye, Earthstar Geographics, CNES/Airbus DS

National Land Cover on Proposed Louw's Bos Public Cemetery and Memorial Park



Description

National Land Cover on Proposed Louw's Bos Public Cemetery and Memorial Park preferred and alternative development sites.

Preferred site, indicated in red, lies to the south of Annandale Road (no biodiversity sensitive areas in site).

Alternate site, indicated in orange, lies to the north of Annandale Road (biodiversity and watercourse / wetland sensitive areas occur in site which have potential to be included as park / conservation features within proposed development).

Legend

- Local municipalities
- Farm boundaries
- National Landcover**
 - Cultivation
 - Degraded
 - Mines
 - Natural
 - Plantations
 - Urban Built-up
 - Waterbodies
- World Street Map

1: 36 112



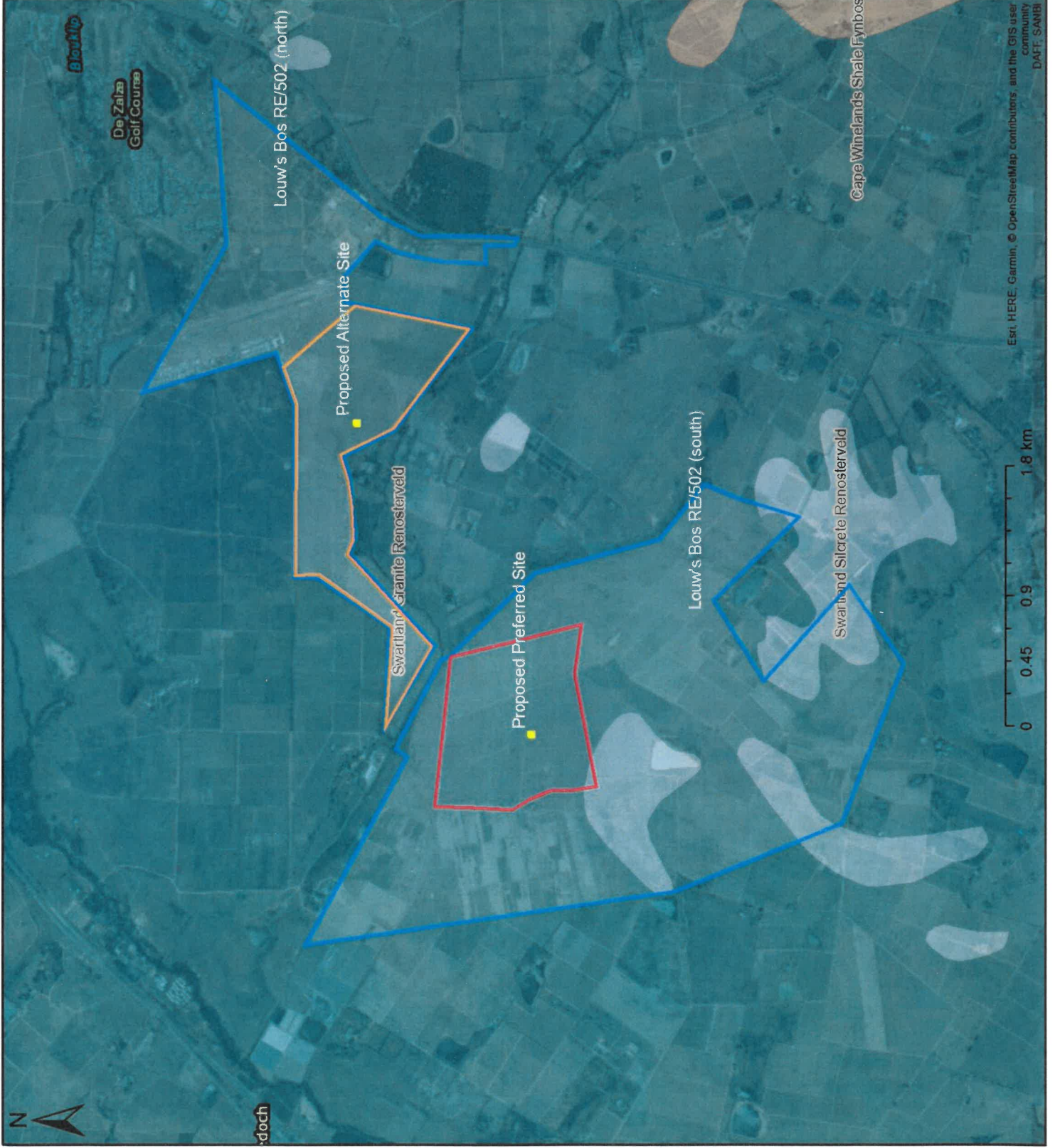
1,8 0 0,92 1,8 Kilometers

WGS_1984_Web_Mercator_Auxiliary_Sphere
© Latitude Geographics Group Ltd.

This map is a user generated static output from an internet mapping site and is for reference only. Data layers that appear on this map may or may not be accurate, current, or otherwise reliable.

THIS MAP IS NOT TO BE USED FOR NAVIGATION

Vegetation Map



Scale: 1:36 112

Date created: January 20, 2019



Western Cape
Government

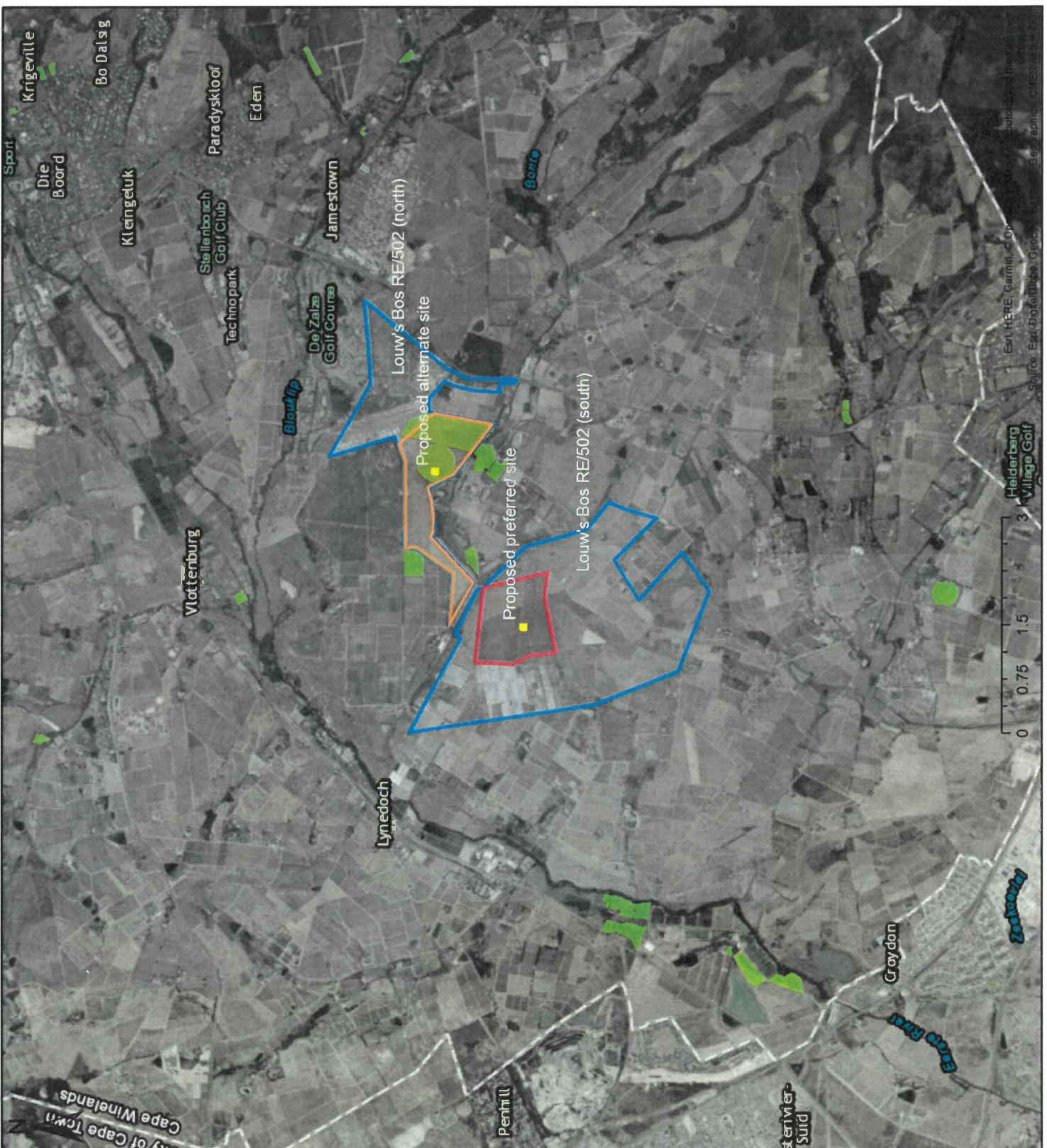
Agriculture

Crop Census 2017/2018 (Summer)

Legend

Crops Per Field Summer

- Other crops
- Berries
- Citrus fruits
- Flowers
- Grains and mixed
- Grapes
- Herbs and Oils
- Industrial
- Lupines
- Nuts
- Oil seeds
- Planted pastures
- Pome fruit
- Stone fruit
- Sub tropical fruit and other
- Teas
- Tree fruit - other
- Vegetables



Scale: 1:72 224
Date created: January 19, 2019



Crop Census 2017/2018 (Winter)

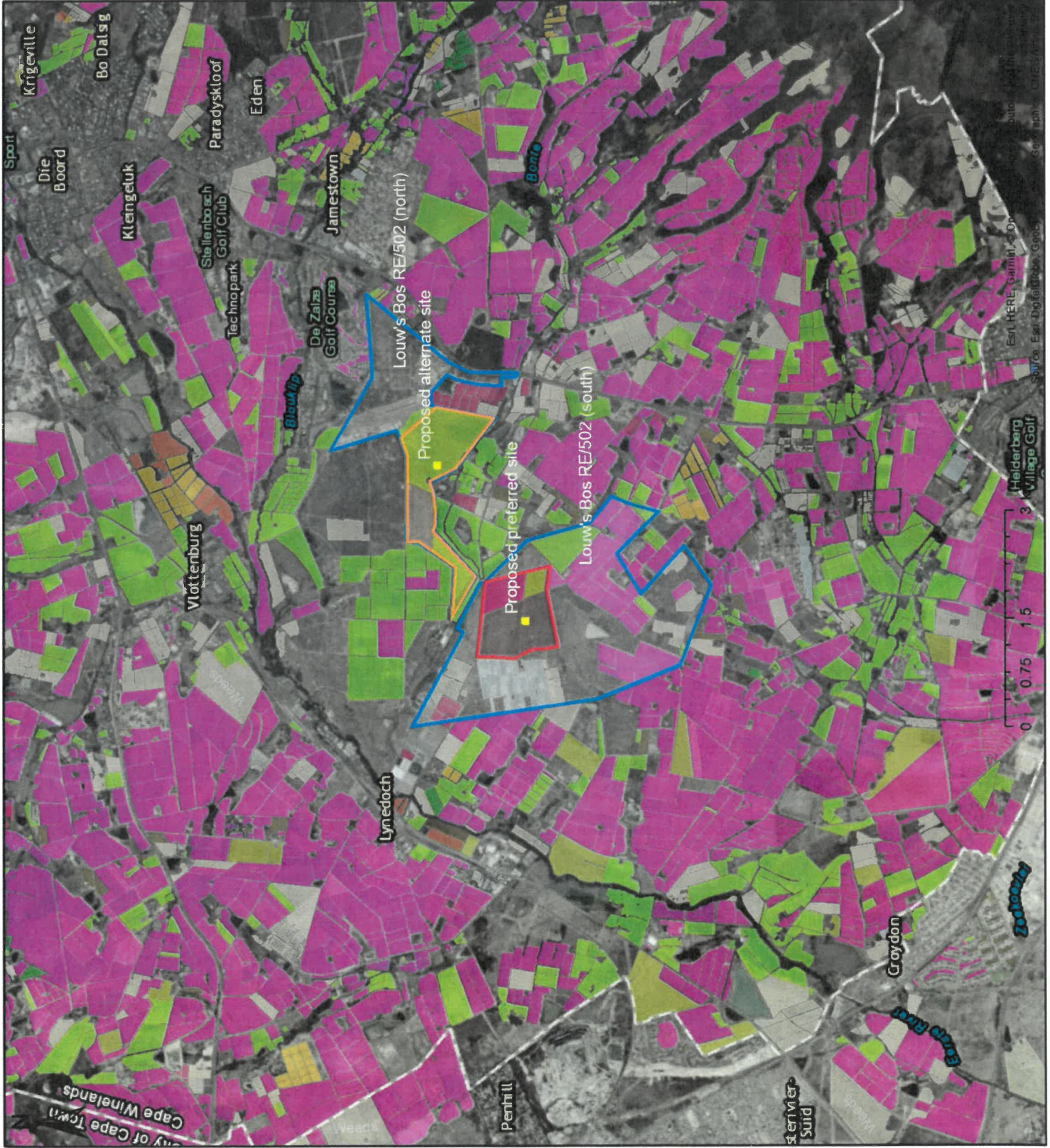
Legend

Crops Per Field Winter

- Other crops
- Berries
- Citrus fruits
- Flowers
- Grains and mixed
- Grapes
- Herbs and Oils
- Industrial
- Lupines
- Nuts
- Oil seeds
- Planted pastures
- Pome fruit
- Stone fruit
- Sub tropical fruit and other
- Teas
- Tree fruit - other
- Vegetables

Scale: 1:72 224

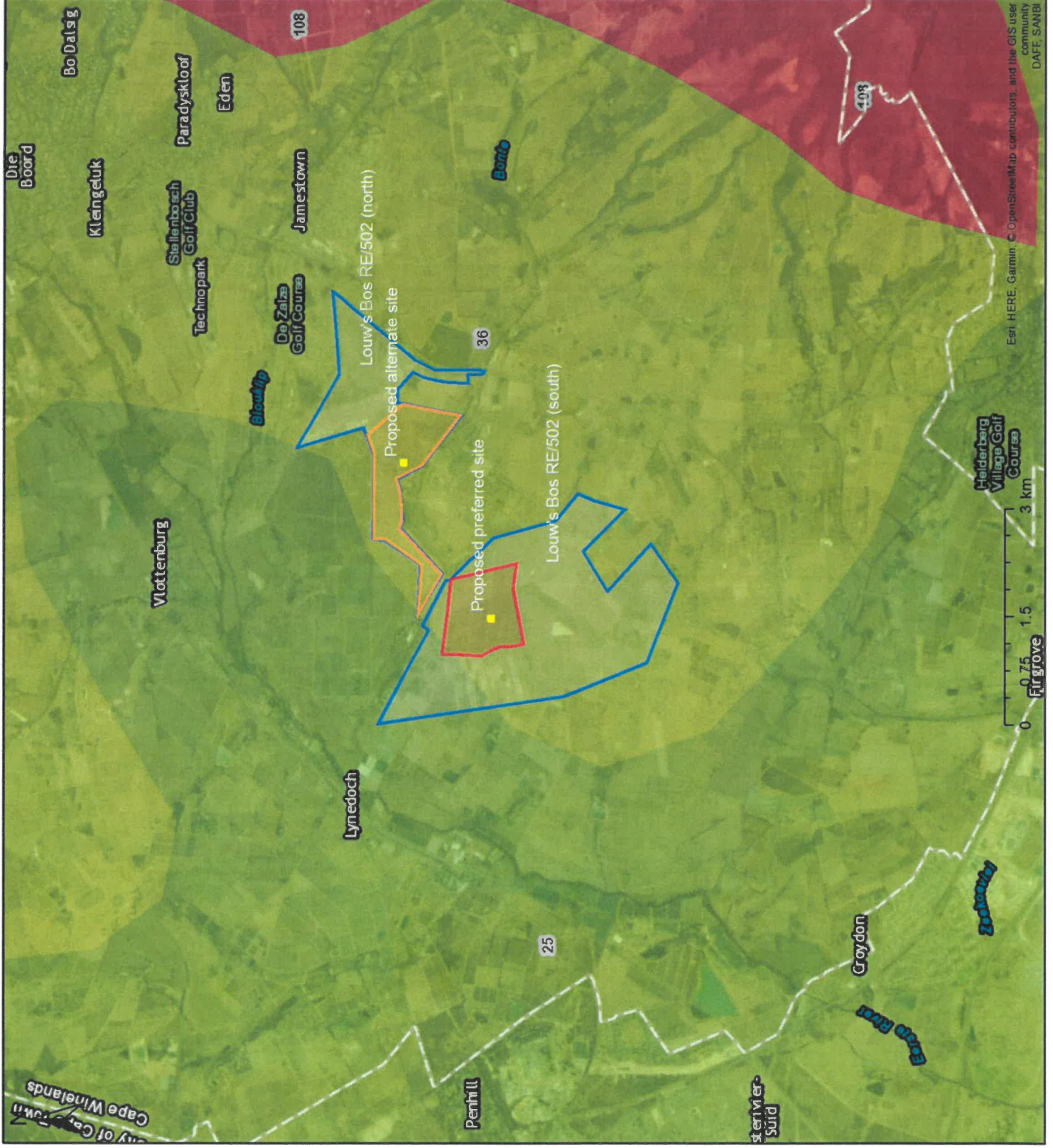
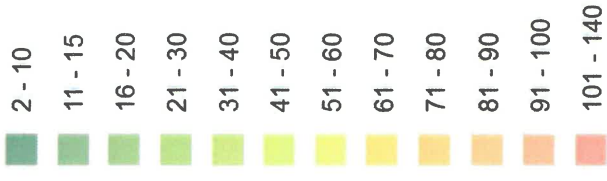
Date created: January 19, 2019



2018 Grazing Capacity

Legend

Grazing Capacity 2018



Scale: 1:72 224
 Date created: January 19, 2019

