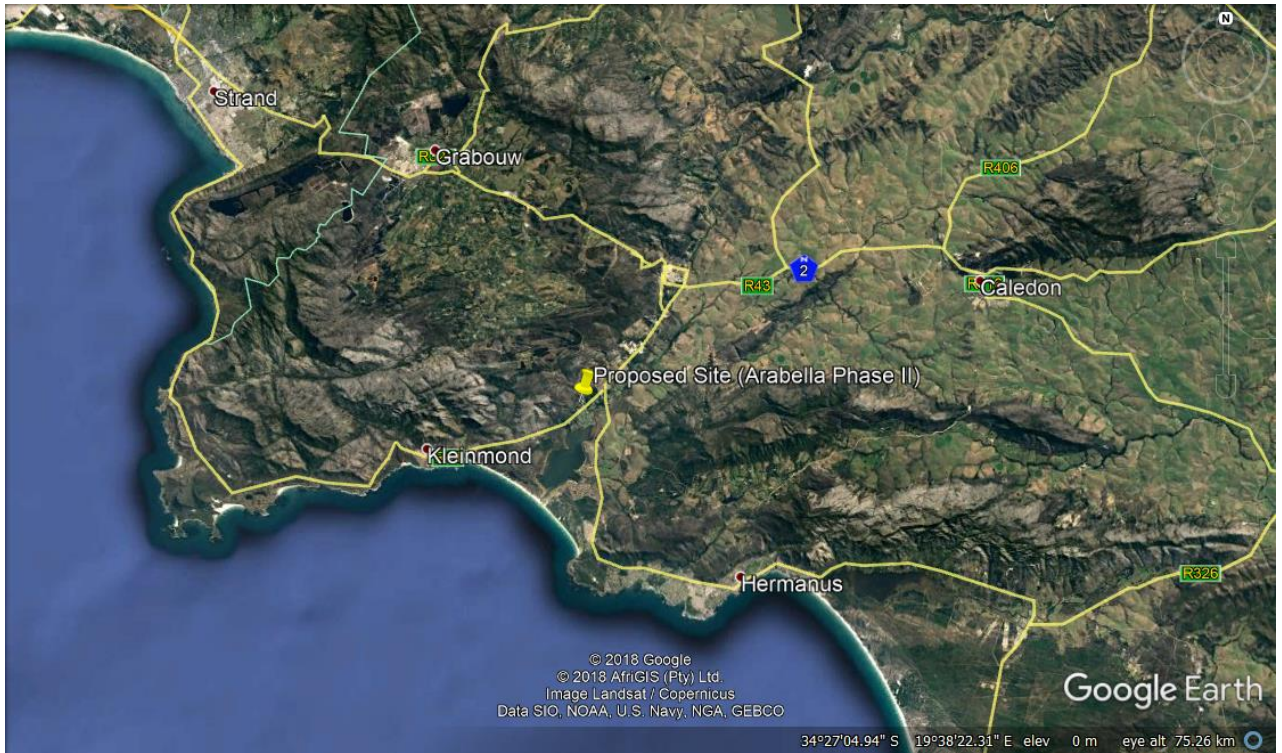
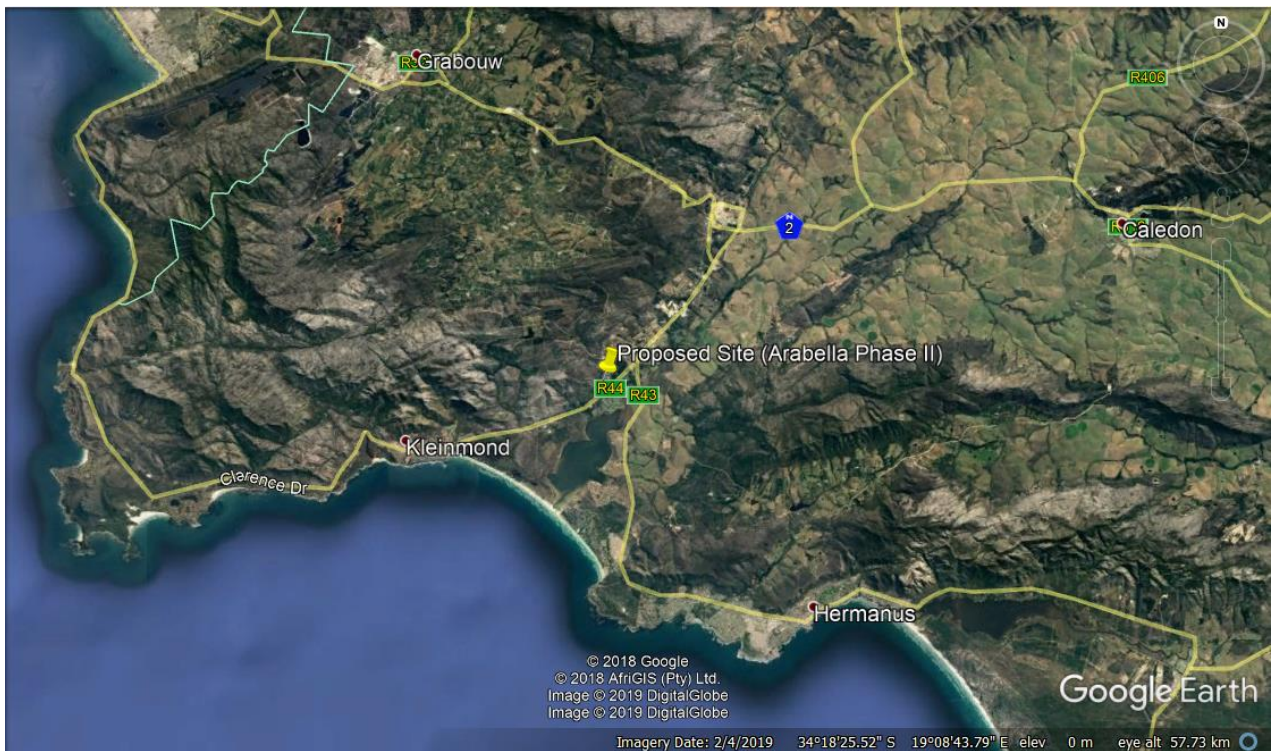


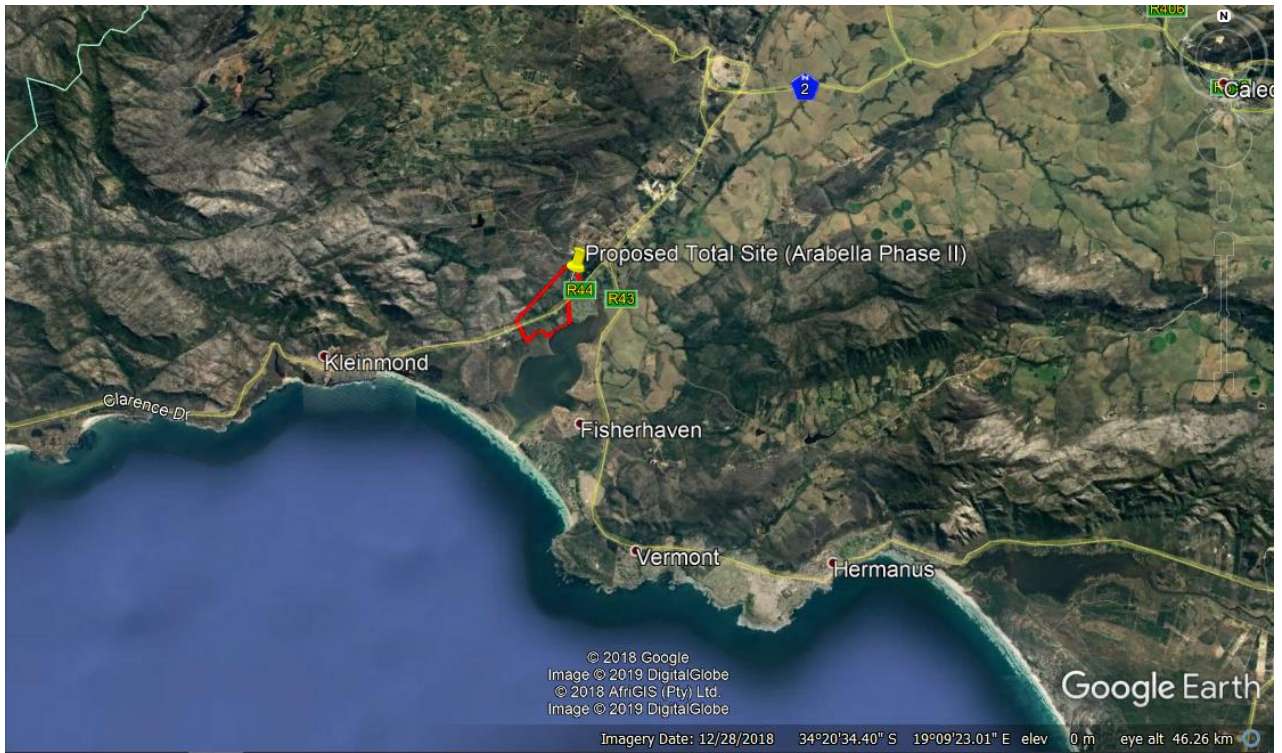
## Appendix A – Locality Maps



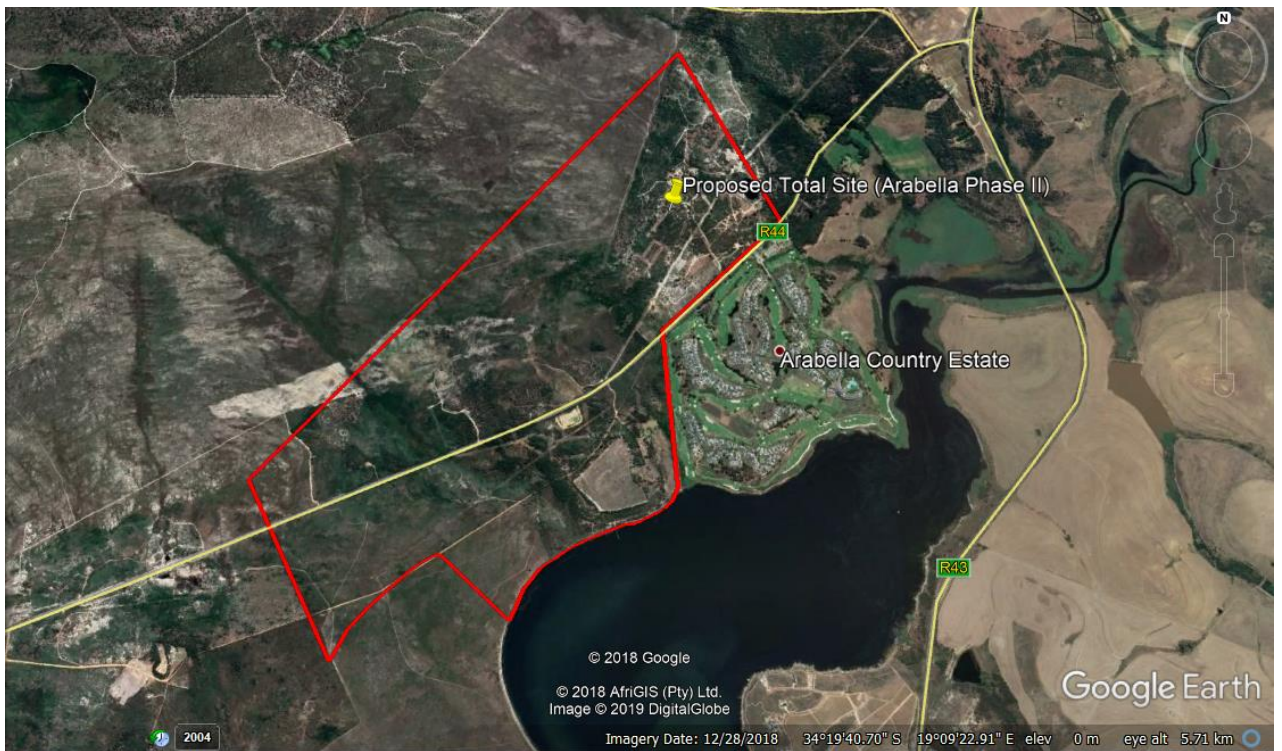
**Figure 1:** Proposed development site for Arabella Phase II development (34°18'25.00"S, 19°7'32.00"E), Overstrand Local Municipality, Caledon Magisterial District, Western Cape



**Figure 2:** Proposed development site for Arabella Phase II development (34°18'25.00"S, 19°7'32.00"E), just off the R44, Overstrand Local Municipality, Caledon Magisterial District, Western Cape



**Figure 3:** Proposed total development site for Arabella Phase II development on Portion 1 and Remainder of Portion 3 of Farm No. 542, Overstrand Local Municipality, Caledon Magisterial District, Western Cape



**Figure 4:** Proposed total development site for Arabella Phase II development on Portion 1 and Remainder of Portion 3 of Farm No. 542, Overstrand Local Municipality, Caledon Magisterial District, Western Cape