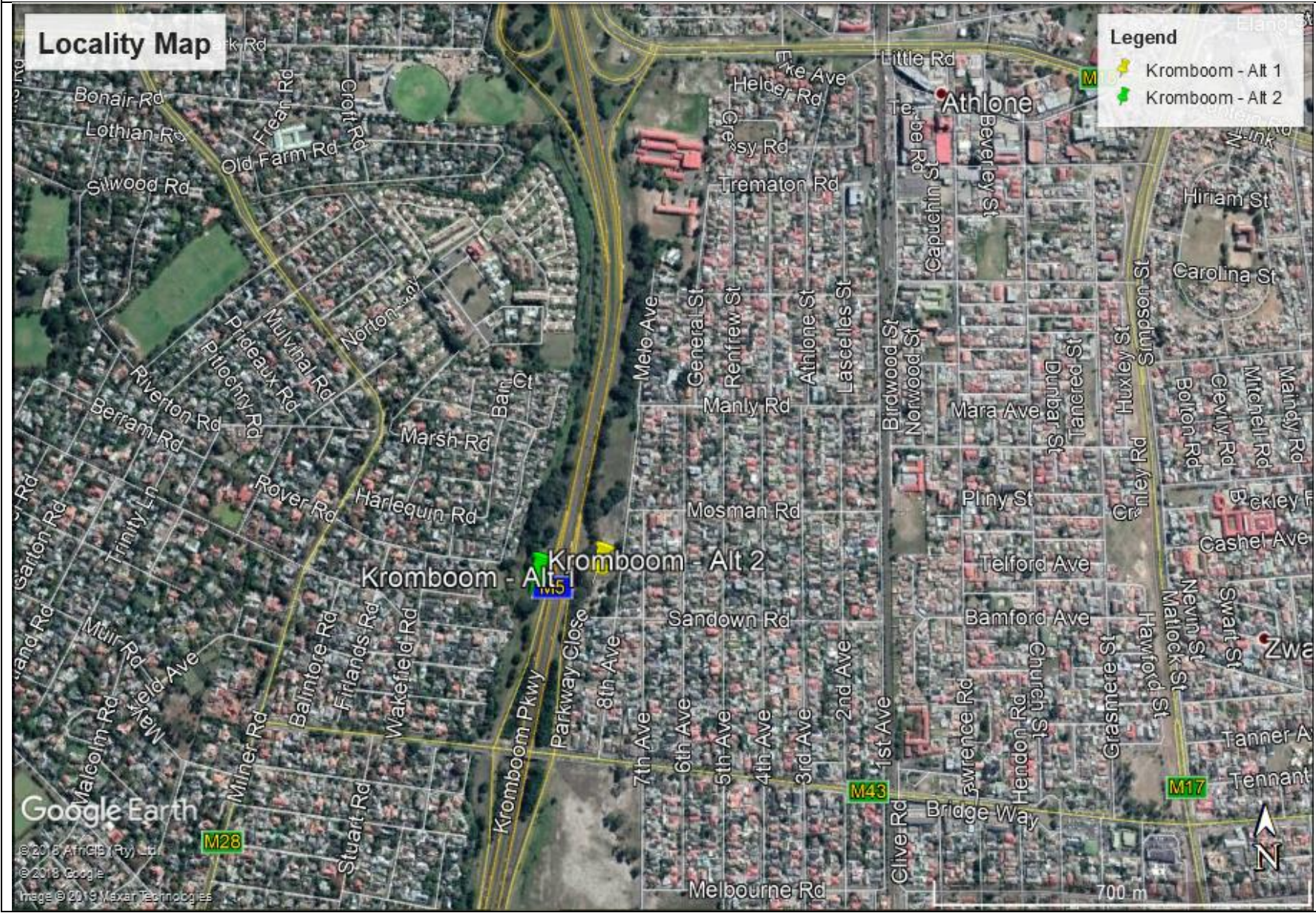




THE PROPOSED DEVELOPMENT OF A 25M HIGH TELECOMMUNICATIONS MAST ON ERF 43547, KROMBOOM PARKWAY, ATHLONE, WESTERN CAPE



SITE CO-ORDINATES

Alternative 1:
33°58'10.90"S,
18°29'43.56"E
 THE SITE

Alternative 2:
33°58'11.50"S,
18°29'38.93"E
 THE SITE



ENVIRO AFRICA
REF:

1211

Sep 2019

