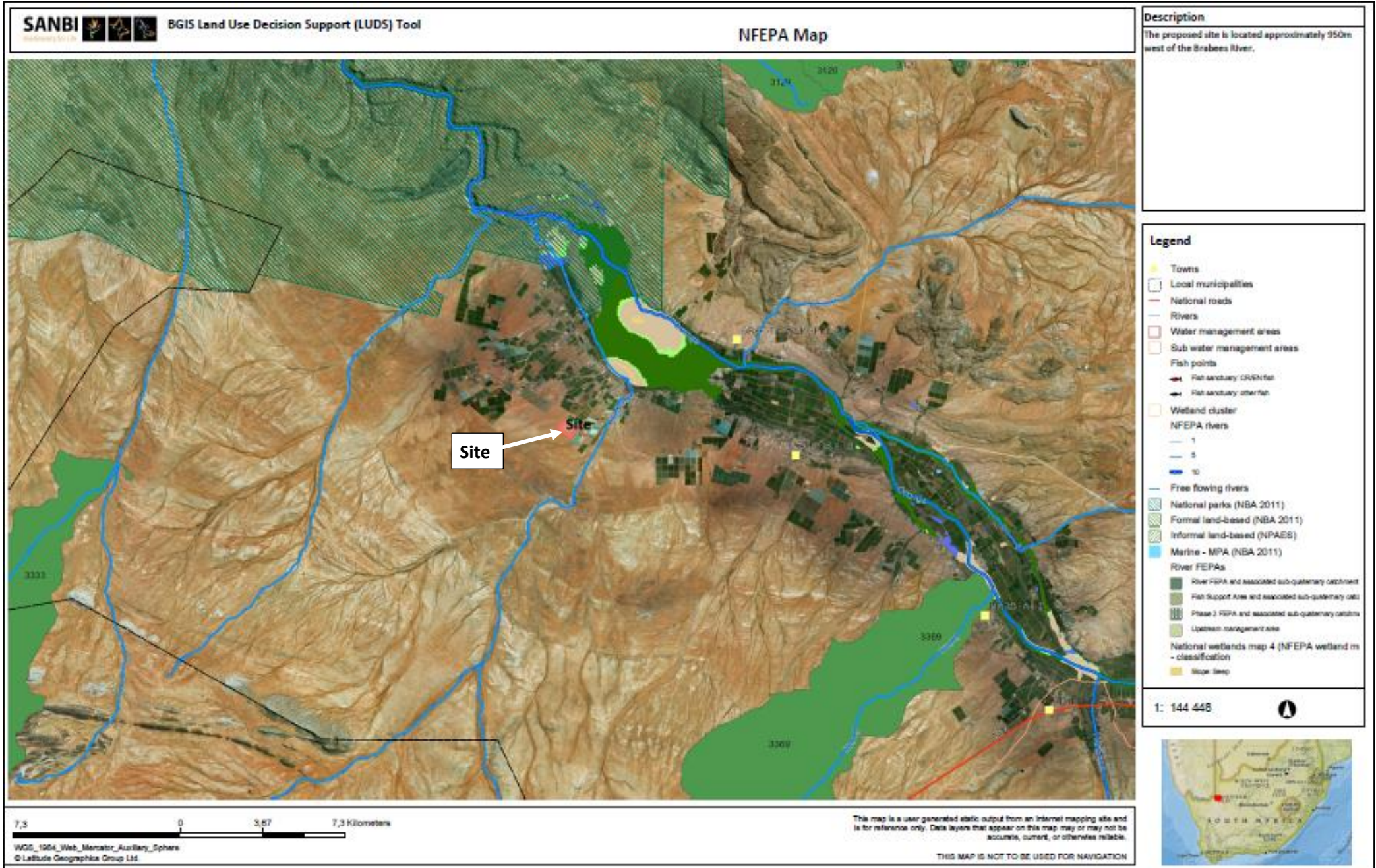


# APPENDIX A2: NFEPA MAP; NATIONAL VEGETATION MAP; PROTECTED AREAS MAP AND NATIONAL THREATENED ECOSYSTEMS MAP





**Description**

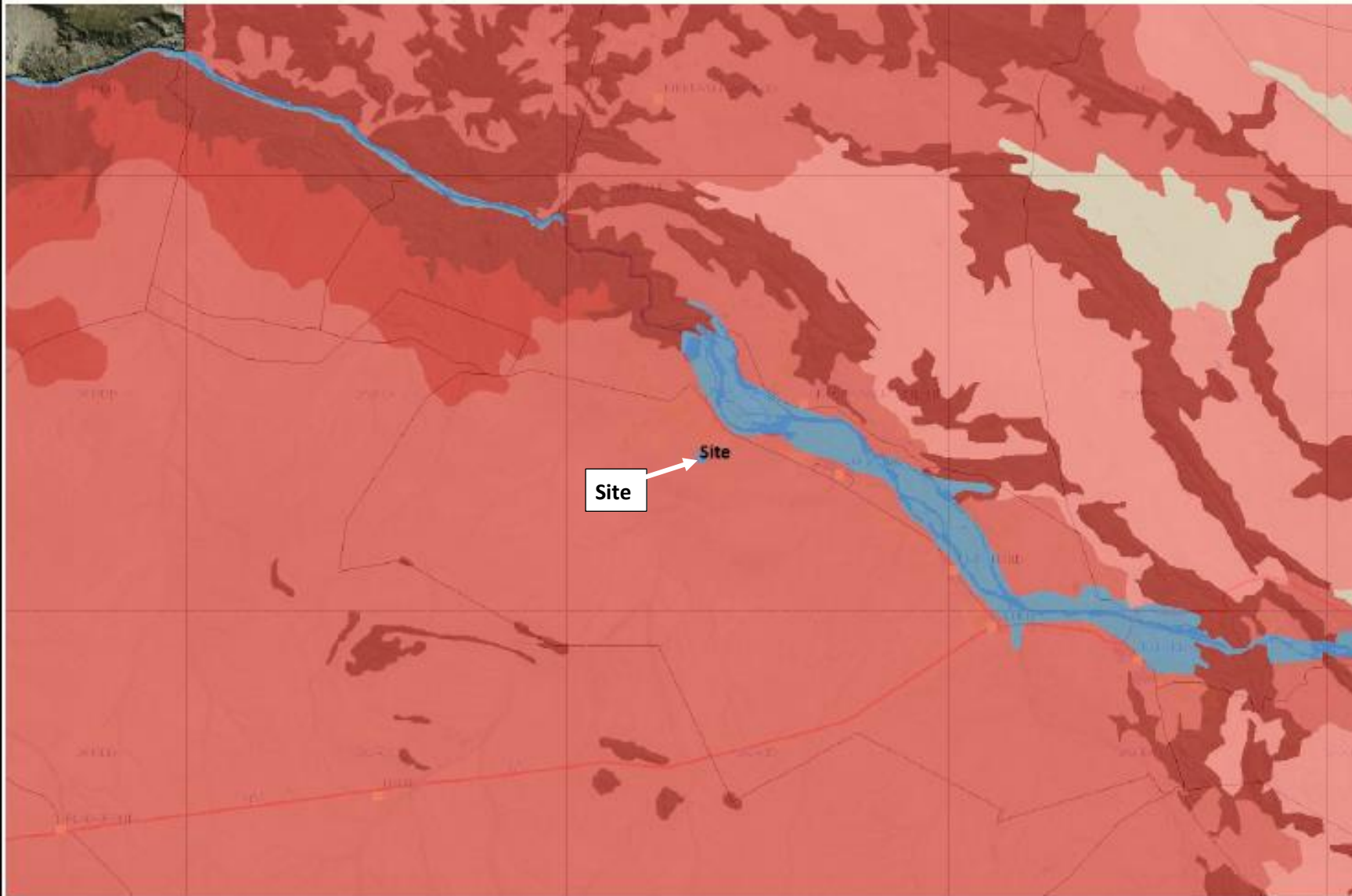
The proposed site and surrounding area is covered with Bushmanland Arid Grassland.

**Legend**

National Vegetation Map 2012 beta 2

- RFa 1 Bokkeveld Sandstone Fynbos
- RFa 2 Graaff-Reinet Sandstone Fynbos
- RFa 3 Olifants Sandstone Fynbos
- RFa 4 Oederberg Sandstone Fynbos
- RFa 5 Waterhoek Sandstone Fynbos
- RFa 6 Flarberg Sandstone Fynbos
- RFa 7 North Heu Sandstone Fynbos
- RFa 8 South Heu Sandstone Fynbos
- RFa 9 Pennevis Sandstone Fynbos
- RFa 10 Hareguas Sandstone Fynbos
- RFa 11 Rogeberg Sandstone Fynbos
- RFa 12 Overberg Sandstone Fynbos
- RFa 13 North Sanderend Sandstone Fynbos
- RFa 14 South Sanderend Sandstone Fynbos
- RFa 15 North Langeberg Sandstone Fynbos
- RFa 16 South Langeberg Sandstone Fynbos
- RFa 17 Rooiberg Sandstone Fynbos
- RFa 18 North Outeniqua Sandstone Fynbos
- RFa 19 South Outeniqua Sandstone Fynbos
- RFa 20 Tantalous Sandstone Fynbos
- RFa 21 North Rooiberg Sandstone Fynbos
- RFa 22 South Rooiberg Sandstone Fynbos
- RFa 23 North Swartberg Sandstone Fynbos
- RFa 24 South Swartberg Sandstone Fynbos
- RFa 25 North Kammanassie Sandstone Fynbos

1: 288 895



14,7 0 7,34 14,7 Kilometers

WGS\_1984\_Web\_Mercator\_Auxiliary\_Sphere  
© Latitude Geographica Group Ltd

This map is a user generated static output from an internet mapping site and is for reference only. Data layers that appear on this map may or may not be accurate, current, or otherwise reliable.

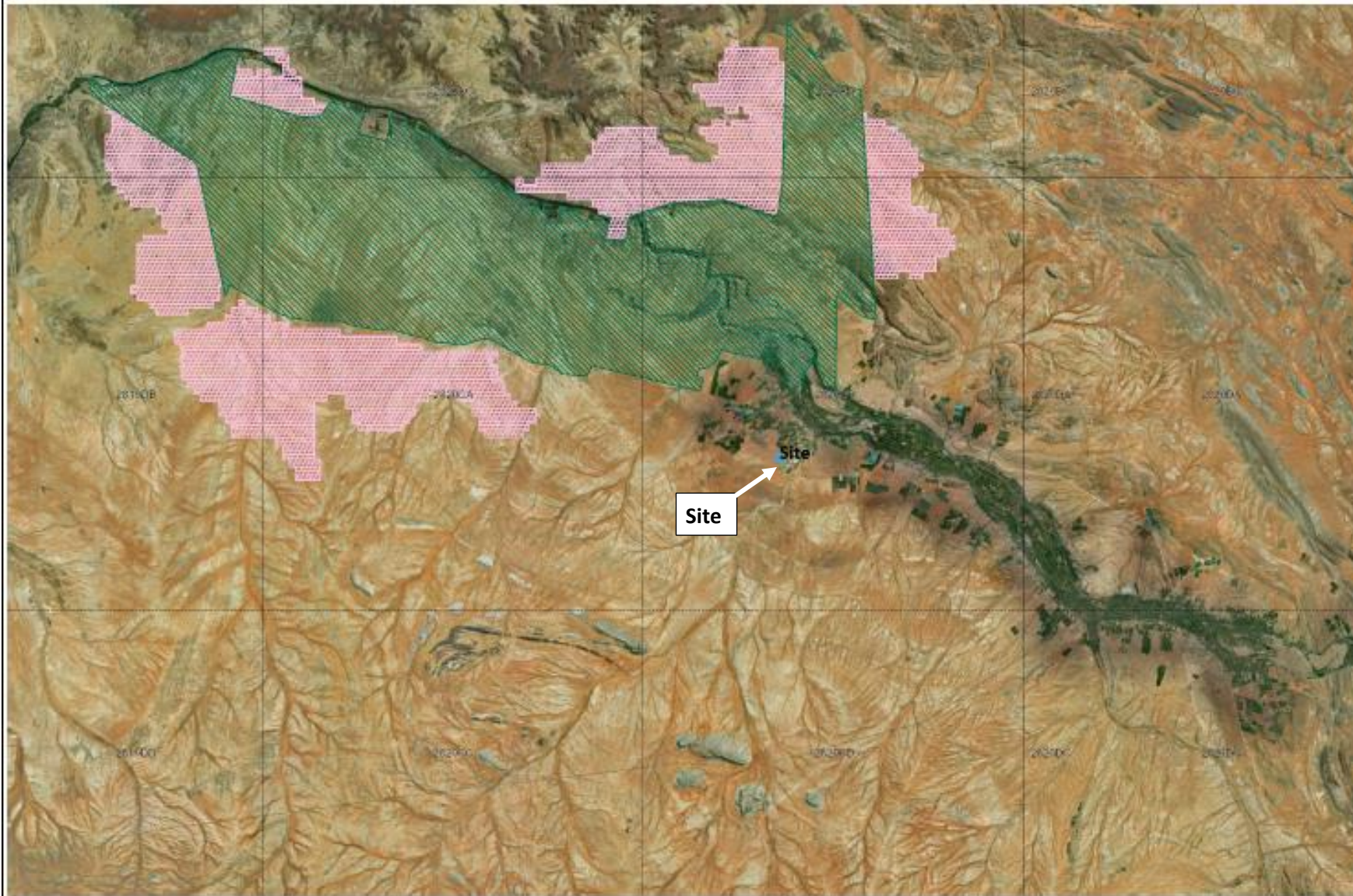
THIS MAP IS NOT TO BE USED FOR NAVIGATION



### National Protected Areas Map

**Description**

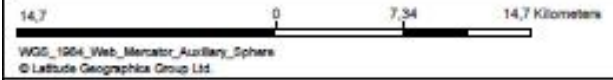
The proposed site is not located within a Protected Area. Augrebles Falls National Park is located approximately 7.5km North of the proposed site.



**Legend**

-  Quarter-degree grid squares
-  National parks (NBA 2011)
-  Formal protected areas (NBA 2011)
-  Informal protected areas (NPAES)
-  Marine Protected Areas MPAs (NBA 2011)
- NPAES focus areas**
-  All other values
-  Agulhas
-  Anthoni Tshwedi
-  Bavens-Addo
-  Bhaco-Koi
-  Bloubaai
-  Bloubaai
-  Bloubaai
-  Bloubaai
-  Bloubaai
-  Bloubaai
-  Bloubaai
-  Bloubaai
-  Bloubaai
-  Bloubaai
-  Bloubaai
-  Bloubaai
-  Bloubaai
-  Bloubaai
-  Bloubaai
-  Bloubaai
-  Bloubaai
-  Bloubaai
-  Bloubaai
-  Bloubaai
-  Bloubaai
-  Bloubaai
-  Bloubaai

1: 288 895



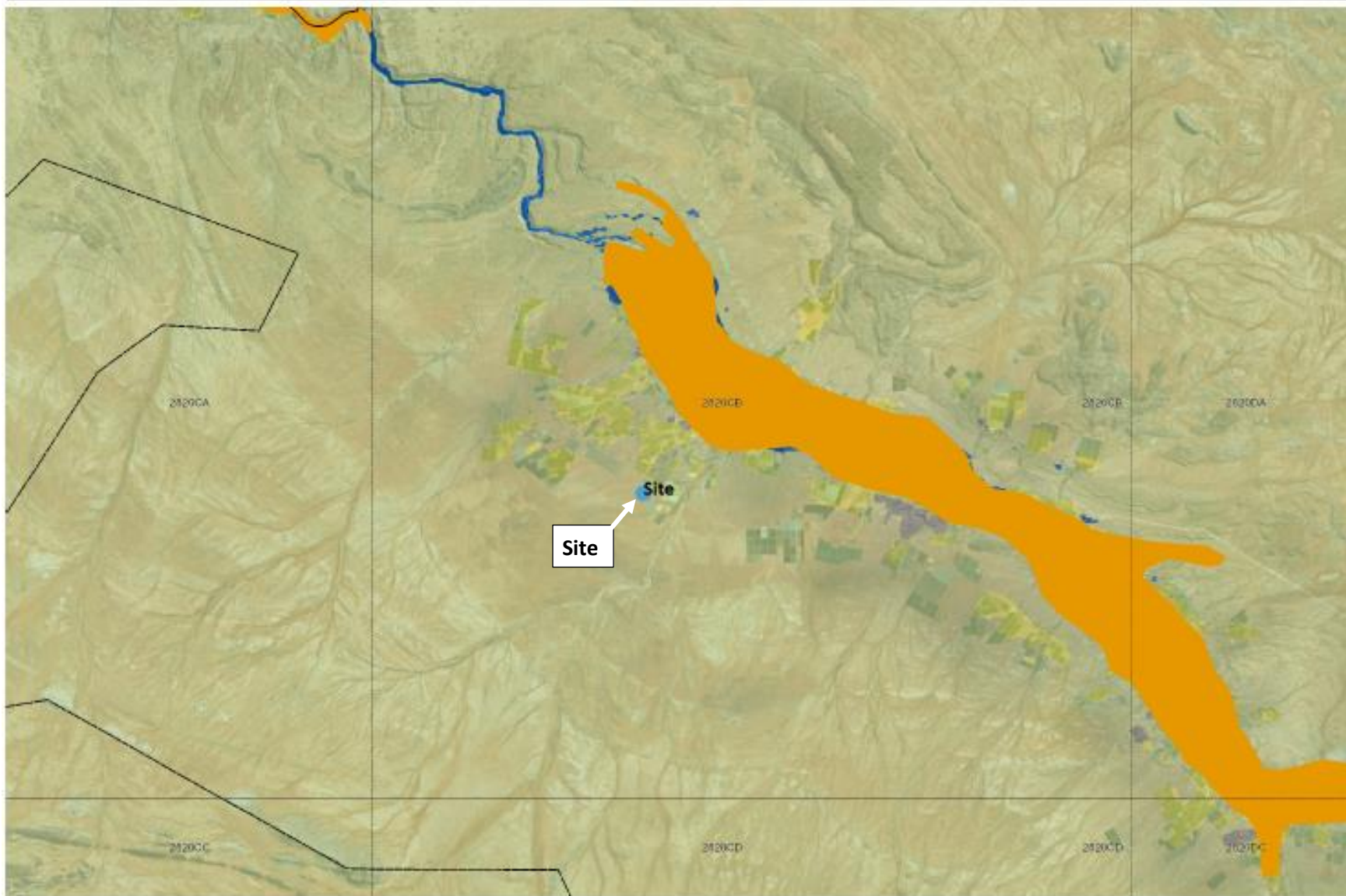
This map is a user generated static output from an internet mapping site and is for reference only. Data layers that appear on this map may or may not be accurate, current, or otherwise reliable.

THIS MAP IS NOT TO BE USED FOR NAVIGATION





### National Threatened Ecosystems Map



**Description**

The proposed site is not located within a Threatened Ecosystem. The area north-east, along the Orange River, is covered with Lower Gariep Alluvial Vegetation which is an Endangered vegetation type.

**Legend**

- Quarter-degree grid squares
- South African municipal boundaries 2009
- Threatened ecosystems original extents**
- Critically Endangered
- Endangered
- Vulnerable
- National Landcover**
- Cultivation
- Degraded
- Mine
- Nature
- Pastoralism
- Urban built-up
- Waterbodies

1: 144 448



7,3 0 3,67 7,3 Kilometers

WGS\_1984\_Web\_Mercator\_Auxiliary\_Sphere  
© Latitude Geographics Group Ltd

This map is a user generated static output from an internet mapping site and is for reference only. Data layers that appear on this map may or may not be accurate, current, or otherwise reliable.

THIS MAP IS NOT TO BE USED FOR NAVIGATION

