

Appendix A: Locality Maps

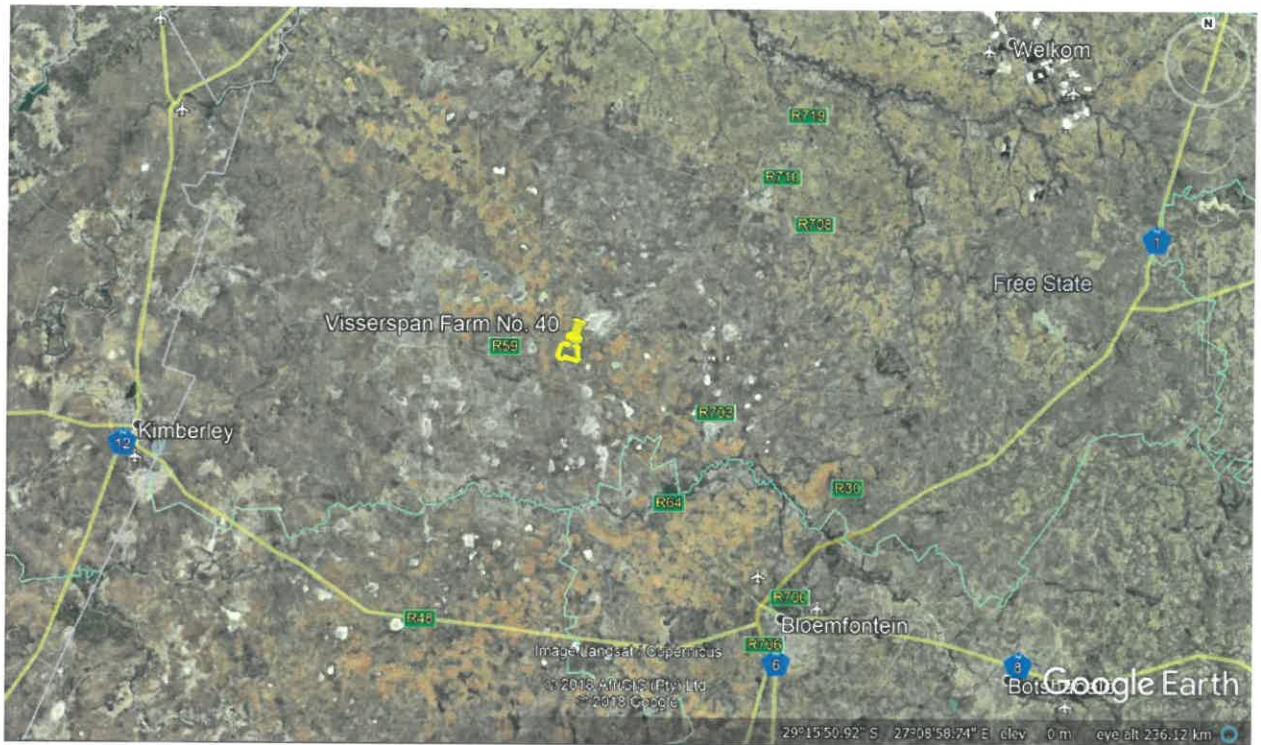


Figure 1: Indication (yellow pin and outline) of property, Visserspan Farm No. 40, Tokologo Local Municipality, Lejweleputswa District Municipality, Boshoff Registration Division, Free State Province, relative to major cities and national roads in the province.

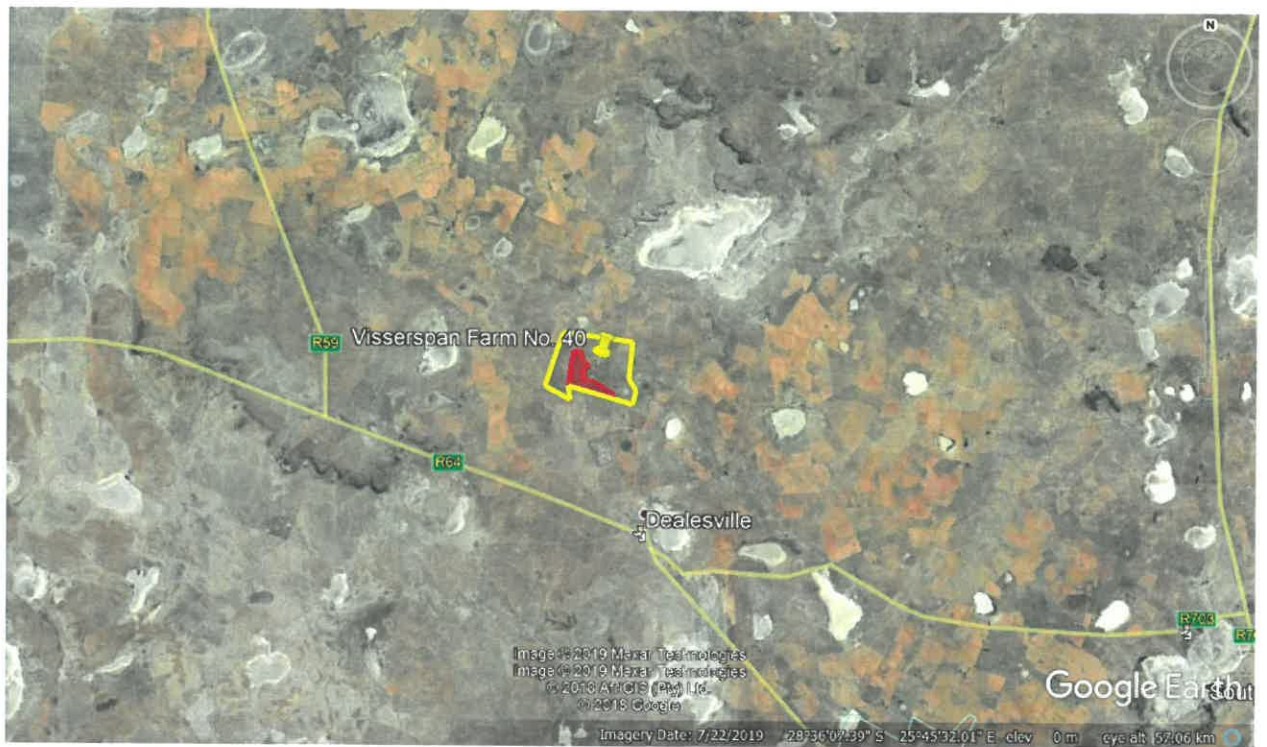


Figure 2: Indication (yellow pin and outline) of property, Visserspan Farm No. 40, Tokologo Local Municipality, Lejweleputswa District Municipality, Boshoff Registration Division, Free State Province, on which the Visserspan Solar PV Facility Project No. 2 (indicated with red outline), is proposed.

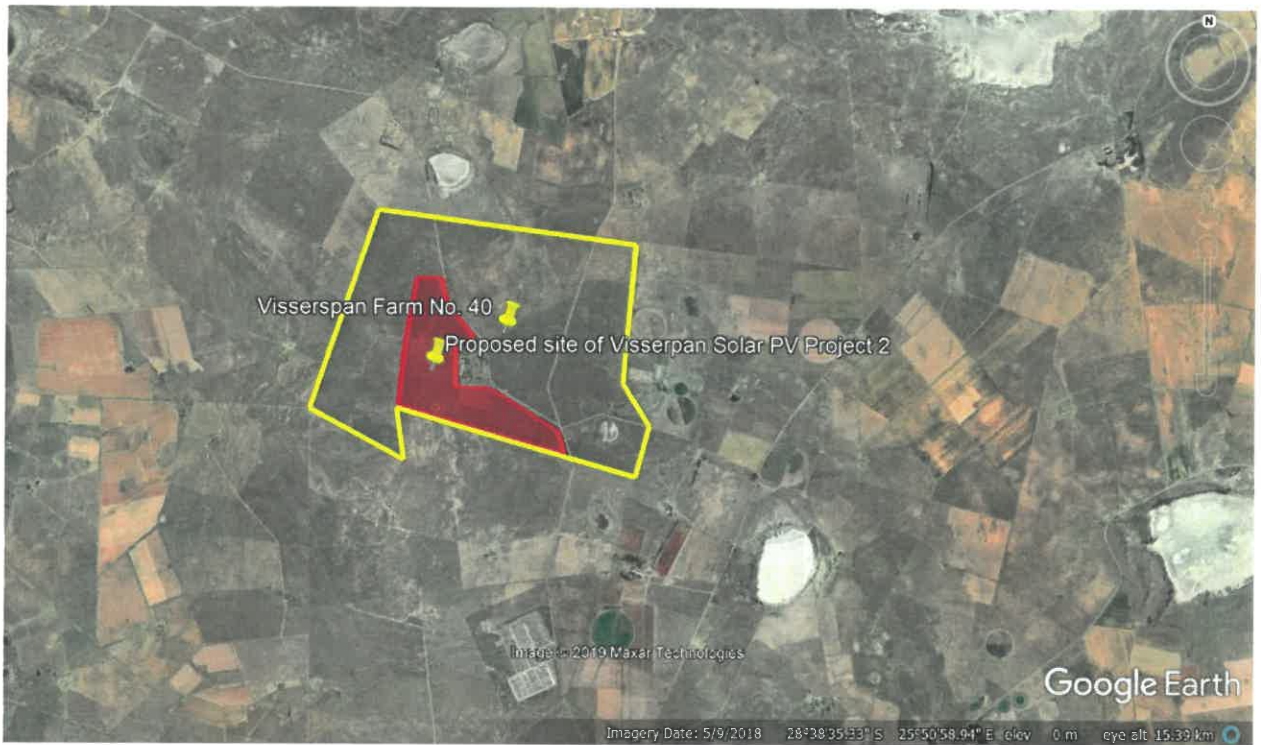


Figure 3: Indication (yellow outline) of property, Visserspan Farm No. 40, Tokologo Local Municipality, Lejweleputswa District Municipality, Boshoff Registration Division, Free State Province, on which the Visserspan Solar PV Facility Project No. 2 (indicated with red outline), is proposed.

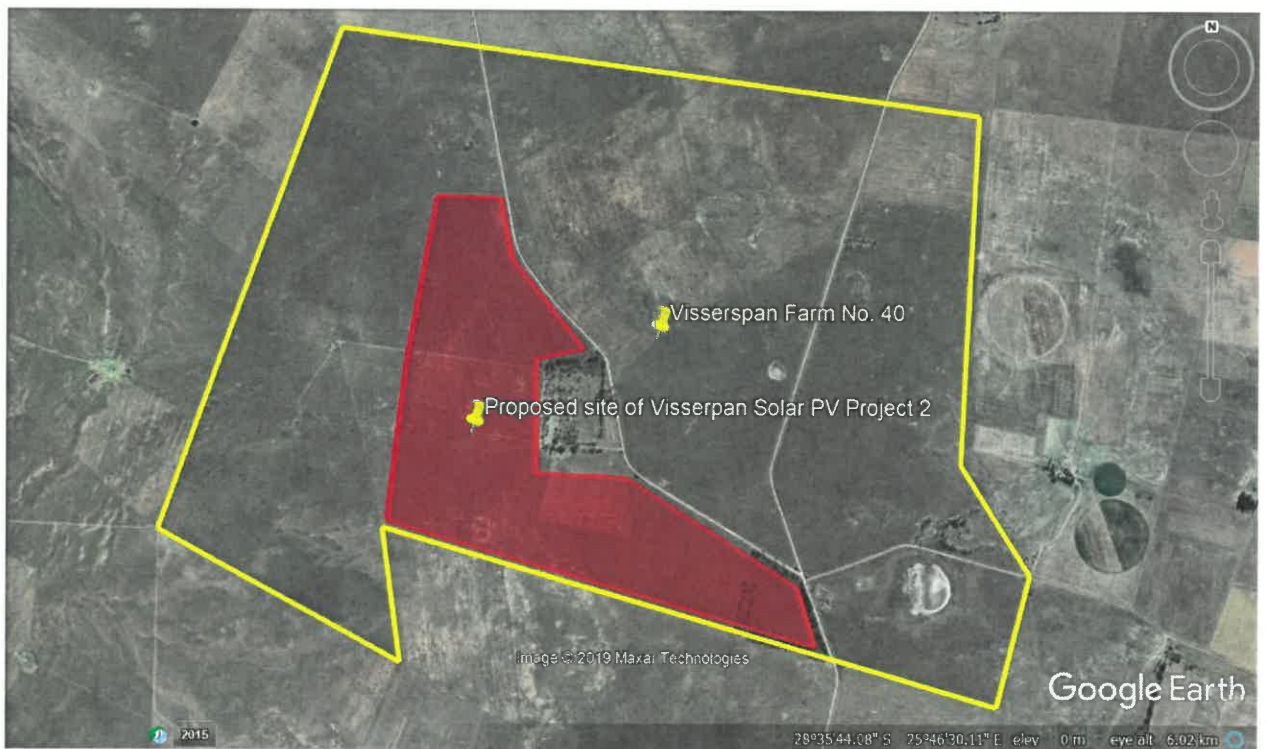


Figure 4: Indication (yellow outline) of property, Visserspan Farm No. 40 (extent 12 754 069 ha), on which the Visserspan Solar PV Facility Project No. 223 (extent 218 ha) and indicated with red outline, is proposed.

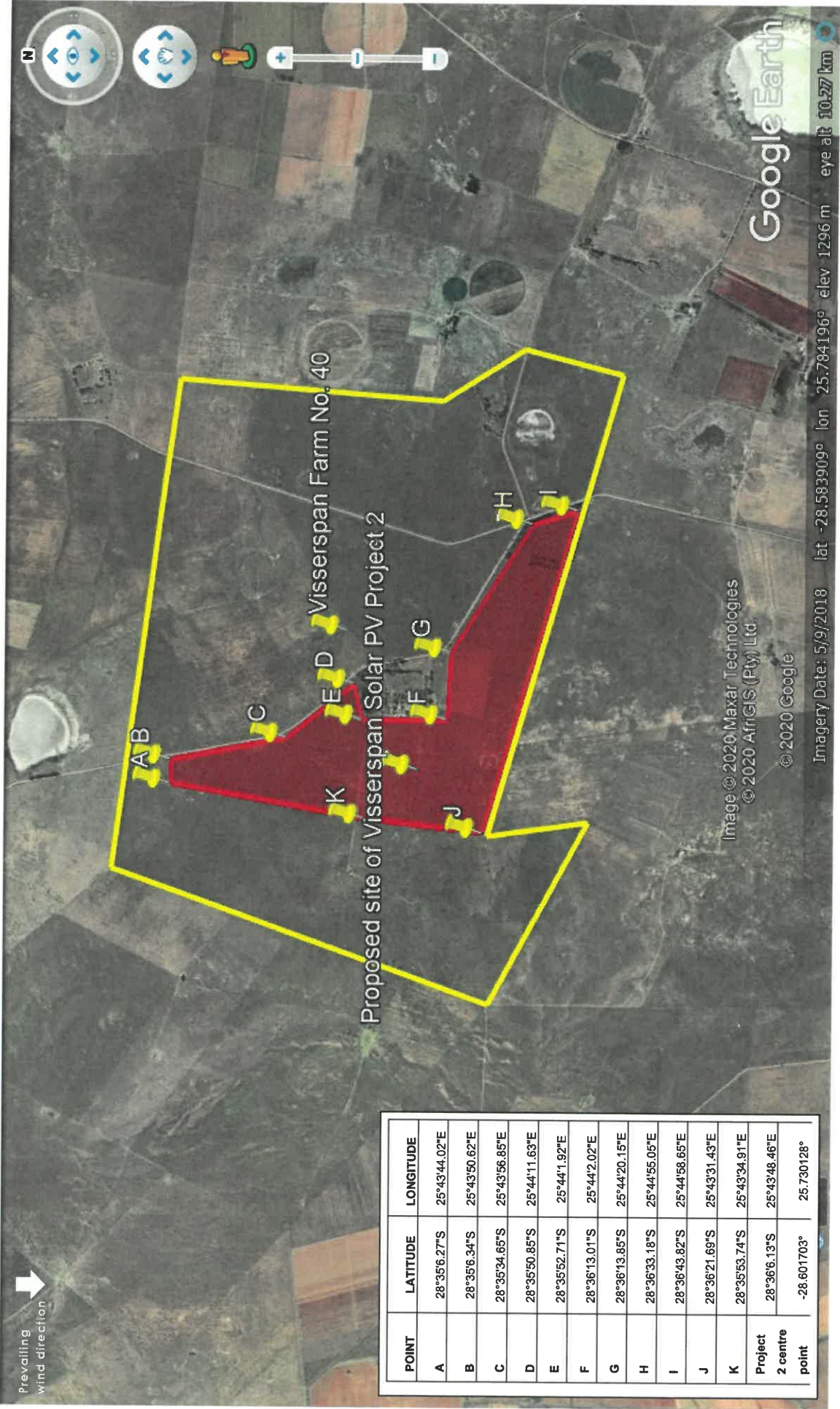


Figure 5: Visserspan Solar PV Facility Project 2 (outlined and shaded red). Project 2 development locality co-ordinates indicated as located within Visserspan Farm No. 40 (outlined in yellow). Area has a northerly prevailing wind direction. 28°35'34.65"S