

**SCREENING REPORT FOR AN ENVIRONMENTAL AUTHORIZATION OR
FOR A PART TWO AMENDMENT OF AN ENVIRONMENTAL AUTHORISATION
AS REQUIRED BY THE 2014 EIA REGULATIONS – PROPOSED DEVELOPMENT
FOOTPRINT ENVIRONMENTAL SENSITIVITY**

EIA Reference number: 16/3/3/6/7/1/F1/11/2186/19

Project name: Eendekuil

Project title: Eendekuil Telecommunication Mast

Date screening report generated: 04/12/2019 10:57:40

Applicant: Eagle Towers SA (Pty_ Ltd.

Compiler: Emile Esquire

Compiler signature:

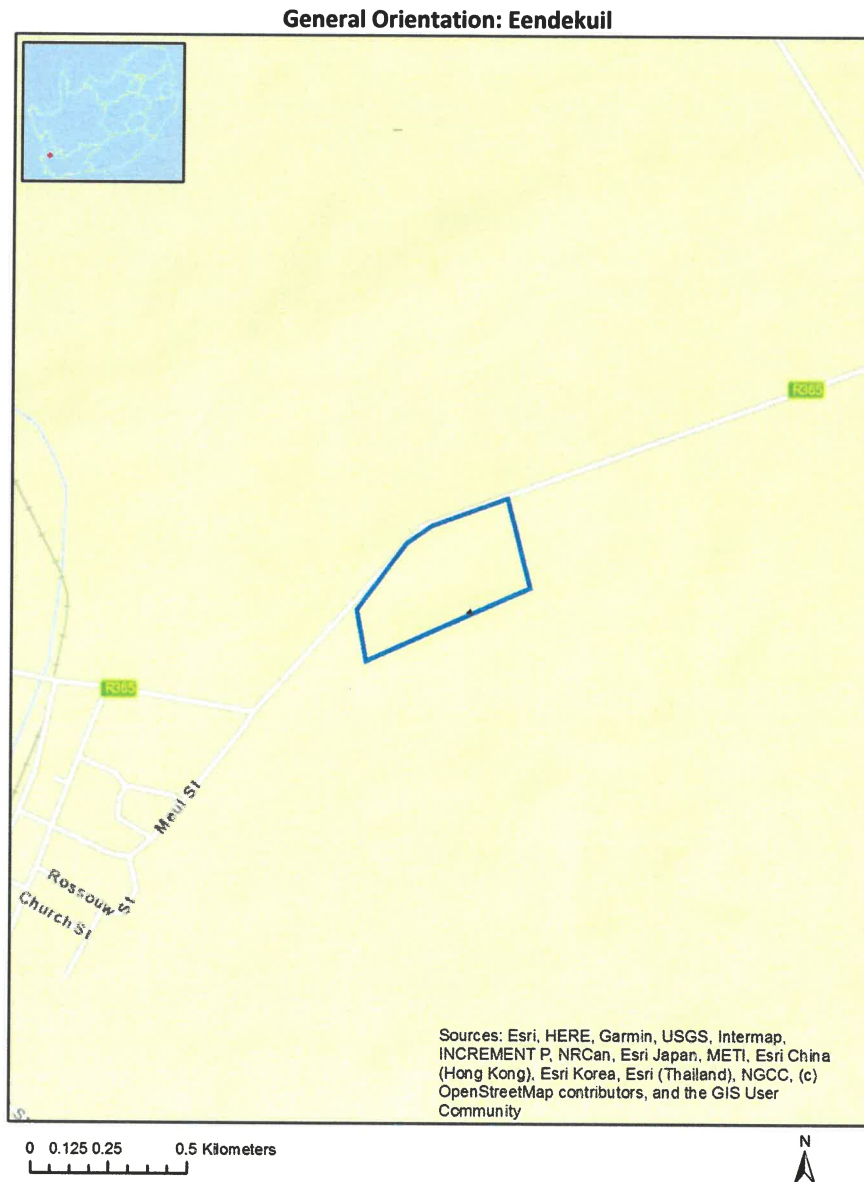


Table of Contents

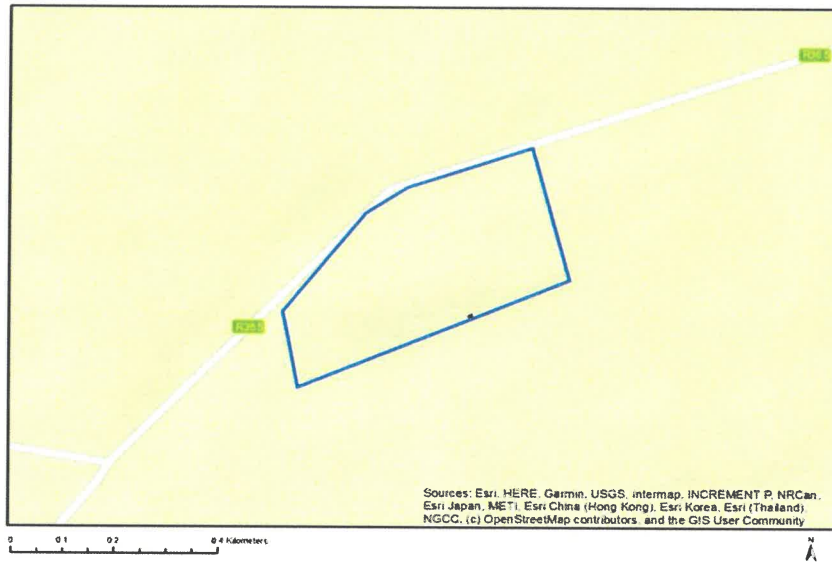
Proposed Project Location	3
Orientation map 1: General location	3
Map of proposed site and relevant area(s)	4
Cadastral details of the proposed site	4
Wind and Solar developments with an approved Environmental Authorisation or applications under consideration within 30 km of the proposed area	4
Environmental Management Frameworks relevant to the application	5
Environmental screening results and assessment outcomes	5
Relevant development incentives, restrictions, exclusions or prohibitions	5
Map indicating proposed development footprint within applicable development incentive, restriction, exclusion or prohibition zones.....	6
Proposed Development Area Environmental Sensitivity.....	6
Specialist assessments identified.....	7
Results of the environmental sensitivity of the proposed area	9
MAP OF RELATIVE AGRICULTURE THEME SENSITIVITY	9

Proposed Project Location

Orientation map 1: General location



Map of proposed site and relevant area(s)



Cadastral details of the proposed site

Property details:

No	Farm Name	Farm/ Erf No	Portion	Latitude	Longitude	Property Type
1	EENDEKUIL	71	0	32°41'11.25S	18°52'41.43E	Farm
2	EENDEKUIL	71	2	32°40'36.08S	18°53'38.51E	Farm Portion
3	EENDEKUIL	71	28	32°40'50.16S	18°53'41.45E	Farm Portion

Development footprint¹ vertices:

Footprint	Latitude	Longitude
1	32°40'53.11S	18°53'44.03E
1	32°40'53.07S	18°53'44.12E
1	32°40'53.03S	18°53'44.19E
1	32°40'53.14S	18°53'44.25E
1	32°40'53.22S	18°53'44.08E
1	32°40'53.11S	18°53'44.03E

Wind and Solar developments with an approved Environmental Authorisation or applications under consideration within 30 km of the proposed area

No	EIA Reference No	Classification	Status of application	Distance from proposed area (km)
----	------------------	----------------	-----------------------	----------------------------------

¹ “development footprint”, means the area within the site on which the development will take place and includes all ancillary developments for example roads, power lines, boundary walls, paving etc. which require vegetation clearance or which will be disturbed and for which the application has been submitted.

1	12/12/20/2401	Solar PV	Approved	0
---	---------------	----------	----------	---

Environmental Management Frameworks relevant to the application

No intersections with EMF areas found.

Environmental screening results and assessment outcomes

The following sections contain a summary of any development incentives, restrictions, exclusions or prohibitions that apply to the proposed development footprint as well as the most environmental sensitive features on the footprint based on the footprint sensitivity screening results for the application classification that was selected. The application classification selected for this report is:

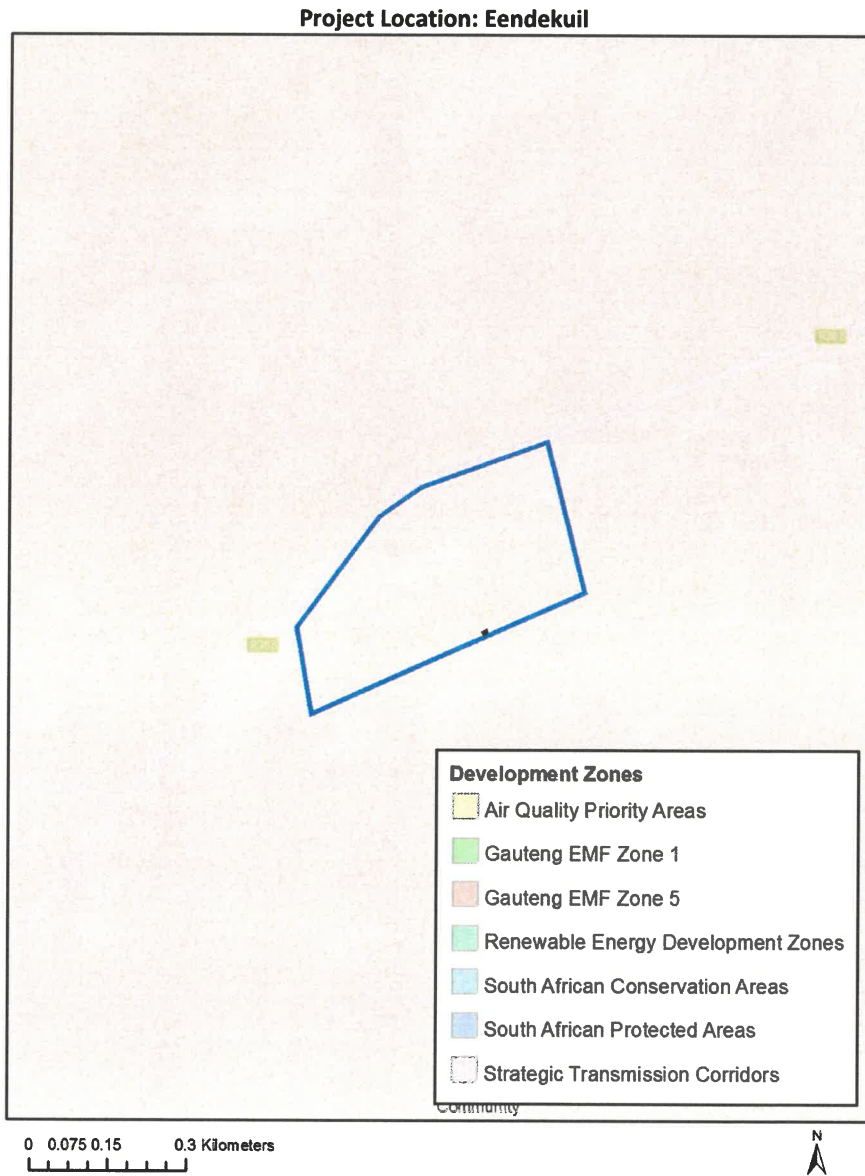
Utilities Infrastructure | Telecommunications/ Radio Broadcasting | Mast | Radio Broadcasting - Mast.

Relevant development incentives, restrictions, exclusions or prohibitions

The following development incentives, restrictions, exclusions or prohibitions and their implications that apply to this footprint are indicated below.

Incentive, restriction or prohibition	Implication
Strategic Transmission Corridor- Western corridor	https://screening.environment.gov.za/ScreeningDownloads/DevelopmentZones/GNR_350_of_13_April_2017.pdf

Map indicating proposed development footprint within applicable development incentive, restriction, exclusion or prohibition zones



Proposed Development Area Environmental Sensitivity

The following summary of the development footprint environmental sensitivities is identified. Only the highest environmental sensitivity is indicated. The footprint environmental sensitivities for the proposed development footprint as identified, are indicative only and must be verified on site by a suitably qualified person before the specialist assessments identified below can be confirmed.

Theme	Very High sensitivity	High sensitivity	Medium sensitivity	Low sensitivity
Agriculture Theme			X	

Specialist assessments identified

Based on the selected classification, and the environmental sensitivities of the proposed development footprint, the following list of specialist assessments have been identified for inclusion in the assessment report. It is the responsibility of the EAP to confirm this list and to motivate in the assessment report, the reason for not including any of the identified specialist study including the provision of photographic evidence of the footprint situation.

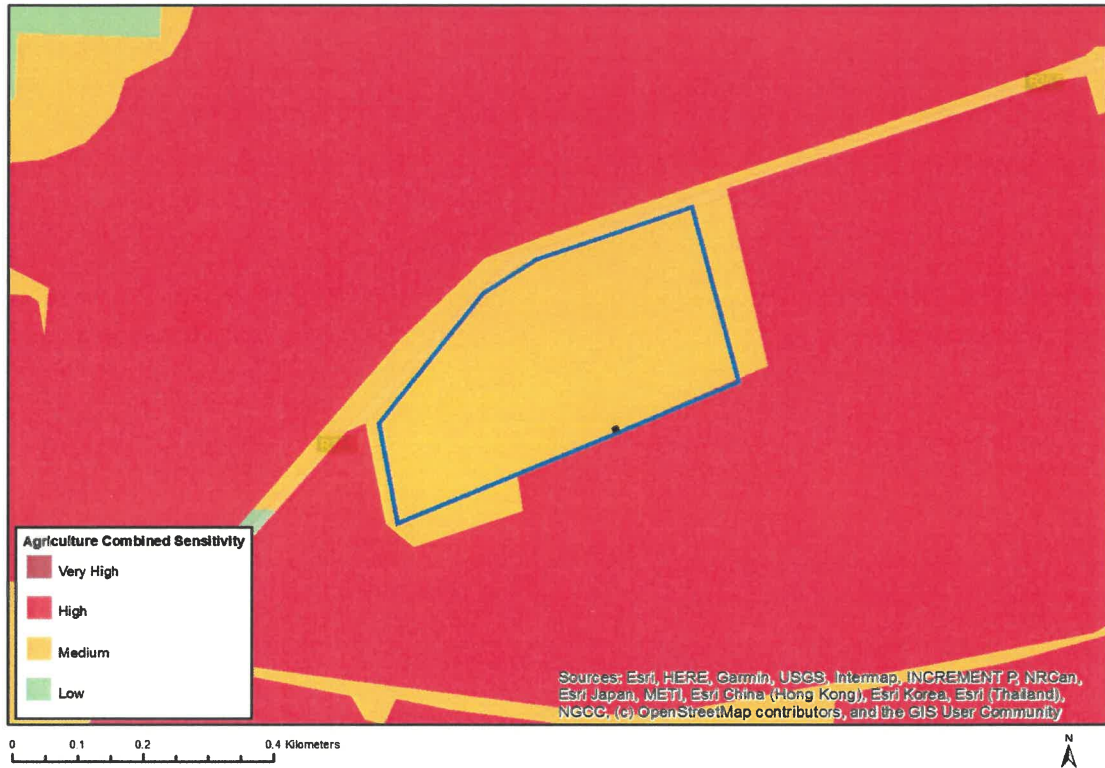
No	Specialist assessment	Assessment Protocol
1	Landscape/Visual Impact Assessment	https://screening.environment.gov.za/ScreeningDownloads/AssessmentProtocols/DraftGazetted General Requirement Assessment Protocols.pdf
2	Archaeological and Cultural Heritage Impact Assessment	https://screening.environment.gov.za/ScreeningDownloads/AssessmentProtocols/DraftGazetted General Requirement Assessment Protocols.pdf
3	Palaeontology Impact Assessment	https://screening.environment.gov.za/ScreeningDownloads/AssessmentProtocols/DraftGazetted General Requirement Assessment Protocols.pdf
4	Terrestrial Biodiversity Impact Assessment	https://screening.environment.gov.za/ScreeningDownloads/AssessmentProtocols/DraftGazetted Terrestrial Biodiversity Assessment Protocols.pdf
5	Aquatic Biodiversity Impact Assessment	https://screening.environment.gov.za/ScreeningDownloads/AssessmentProtocols/DraftGazetted Aquatic Biodiversity Assessment.pdf
6	Civil Aviation Assessment	https://screening.environment.gov.za/ScreeningDownloads/AssessmentProtocols/DraftGazetted Civil Aviation Installations Assessment Protocols.pdf
7	Defense Assessment	https://screening.environment.gov.za/ScreeningDownloads/AssessmentProtocols/DraftGazetted Defence Installations Assessment Protocols.pdf
8	RFI Assessment	https://screening.environment.gov.za/ScreeningDownloads/AssessmentProtocols/DraftGazetted General Requirement Assessment Protocols.pdf
9	Geotechnical Assessment	https://screening.environment.gov.za/ScreeningDownloads/AssessmentProtocols/DraftGazetted General Requirement Assessment Protocols.pdf

	ment	
1 0	Plant Species Assess ment	https://screening.environment.gov.za/ScreeningDownloads/AssessmentProtocols/DraftGazetted General Requirement Assessment Protocols.pdf
1 1	Animal Species Assess ment	https://screening.environment.gov.za/ScreeningDownloads/AssessmentProtocols/DraftGazetted General Requirement Assessment Protocols.pdf

Results of the environmental sensitivity of the proposed area.

The following section represents the results of the screening for environmental sensitivity of the proposed footprint for relevant environmental themes associated with the project classification. It is the duty of the EAP to ensure that the environmental themes provided by the screening tool are comprehensive and complete for the project. Refer to the disclaimer.

MAP OF RELATIVE AGRICULTURE THEME SENSITIVITY



Very High sensitivity	High sensitivity	Medium sensitivity	Low sensitivity
		X	

Sensitivity Features:

Sensitivity	Feature(s)
Medium	Land capability;06. Low-Moderate/07. Low-Moderate/08. Moderate