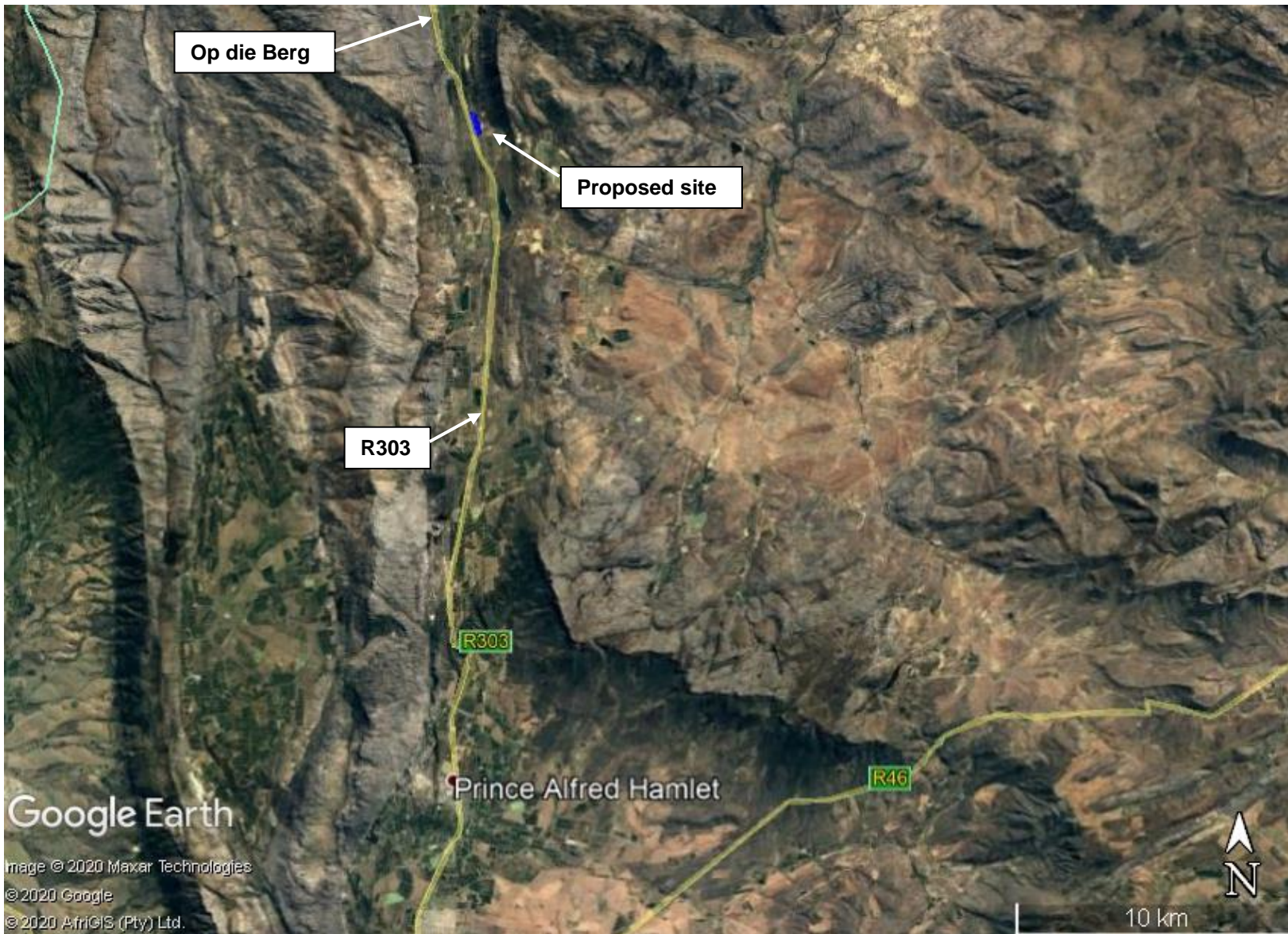


# PROPOSED DEVELOPMENT OF A DAM ON FARM KLEINVLEI 209, PORTION 1, CERES, WESTERN CAPE



## SITE CO-ORDINATES

33° 04' 02.00"S  
19° 19' 57.59"E

 PROPOSED SITE

## DEADP REF:

16/3/3/6/7/1/B5/2/1403/19

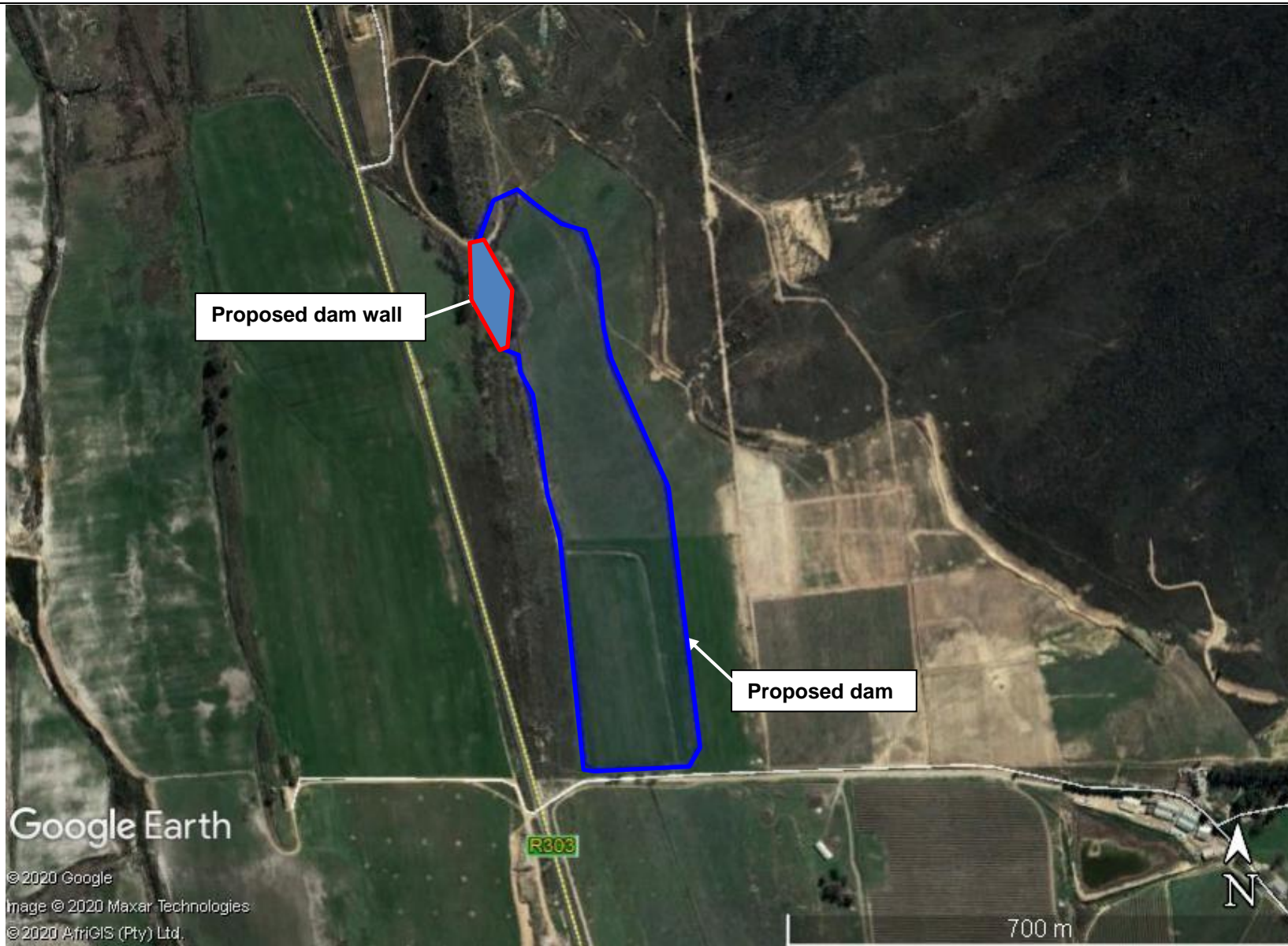
## ENVIRO AFRICA REF:

0501

March 2020





# PROPOSED DEVELOPMENT OF A DAM ON FARM KLEINVLEI 209, PORTION 1, CERES, WESTERN CAPE



## SITE CO-ORDINATES

33° 04' 02.00"S  
19° 19' 57.59"E

-  PROPOSED DAM WALL
-  PROPOSED DAM

## DEADP REF:

16/3/3/6/7/1/B5/2/1403/19

## ENVIRO AFRICA REF:

0501

March 2020

