

Photo 1: Poster placed at the !Kheis Municipal offices in Groblershoop



Photo 2: Poster placed at the !Kheis Municipal offices in Groblershoop



Photo 3: Poster placed at the public notice board at the AgriMark in Groblershoop

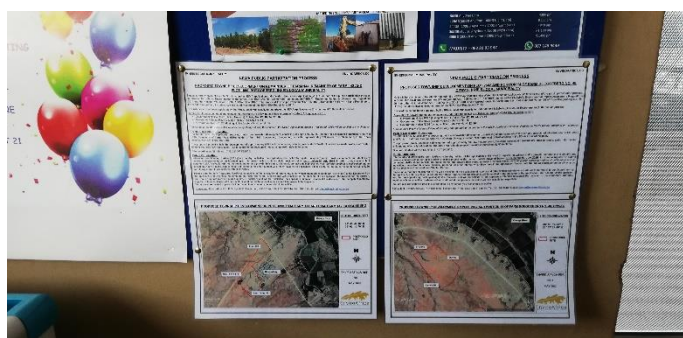


Photo 4: Poster placed at the public notice board at the AgriMark in Groblershoop

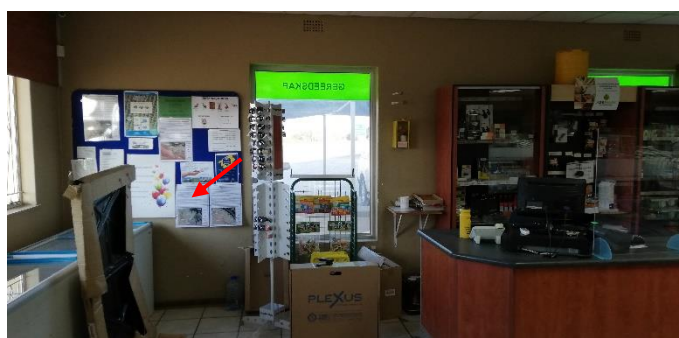


Photo 5: Poster placed at the Aunt Dolletjies Municipal Library in Boegoeberg



Photo 6: Poster placed at the Aunt Dolletjies Municipal Library in Boegoeberg



Photo 7: Poster placed at the Municipal offices in Boegoeberg



Photo 8: Poster placed at the Municipal offices in Boegoeberg





A photograph of a large, open, gravel-covered area, likely a construction site or a cleared lot. In the background, there are utility poles, power lines, and some trees. A yellow hard hat is placed on a wooden post in the foreground, next to a small sign.

The photograph shows a large white sign for the Boegoerbg Primary Health Care Clinic. The sign is mounted on two metal poles and contains the following information:

- Top Left:** "SIEDE HENK-DE-RELT, 818-7-1-1011" and "71 JOHANNESBURG".
- Top Right:** "AFRIKA: 1611-1611 HAN-DE-RELT-DE-RELT" and "71 JOHANNESBURG".
- Center:** "BOEGOERBG PRIMARY HEALTH CARE CLINIC" and "BOEGOERBG PRIMÊRE GESONDHEIDSORG SENTER".
- Below Center:** "TEL: 054-861 0000".
- Left Column:** "SERVICE PACKAGE" and "DIENSTE PAKKET".
- Right Column:** "DIENSTE PAKKET" and "DIENSTE PAKKET".
- Bottom:** "HEALTH SERVICES FOR".

The sign also features a South African flag and a red ribbon logo. The background shows a dirt road, some buildings, and trees under a clear blue sky.

A photograph of a small, dilapidated building with blue corrugated metal siding. A sign above the entrance reads "Trust Store". A person is visible in the foreground on the right.

Photo 17: Poster placed at the boundary of the site, at the entrance to Boegoeberg



Photo 18: Poster placed at the boundary of the site, at the entrance to Boegoeberg



Photo 11: Letter drops conducted to adjacent residents



Photo 12: Letter drops conducted to adjacent residents



Photo 13: Letter drops conducted to adjacent residents



Photo 14: Letter drops conducted to adjacent residents

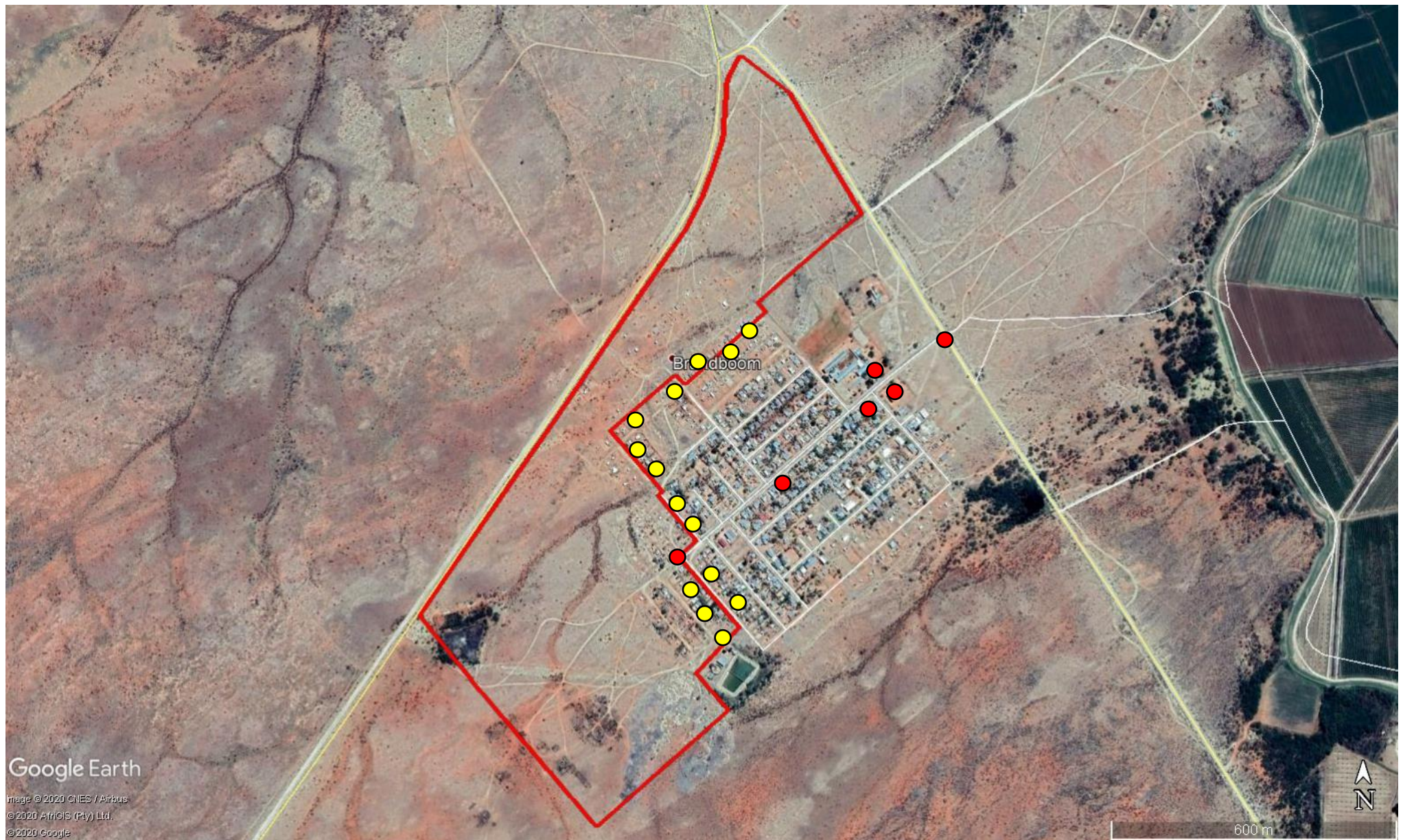


Photo 15: Letter drops conducted to adjacent residents



Photo 16: Letter drops conducted to adjacent residents





Location of posters indicated by the red dots and the location of letter drops indicated by the yellow dots. Public Participation conducted on 19 May 2020.