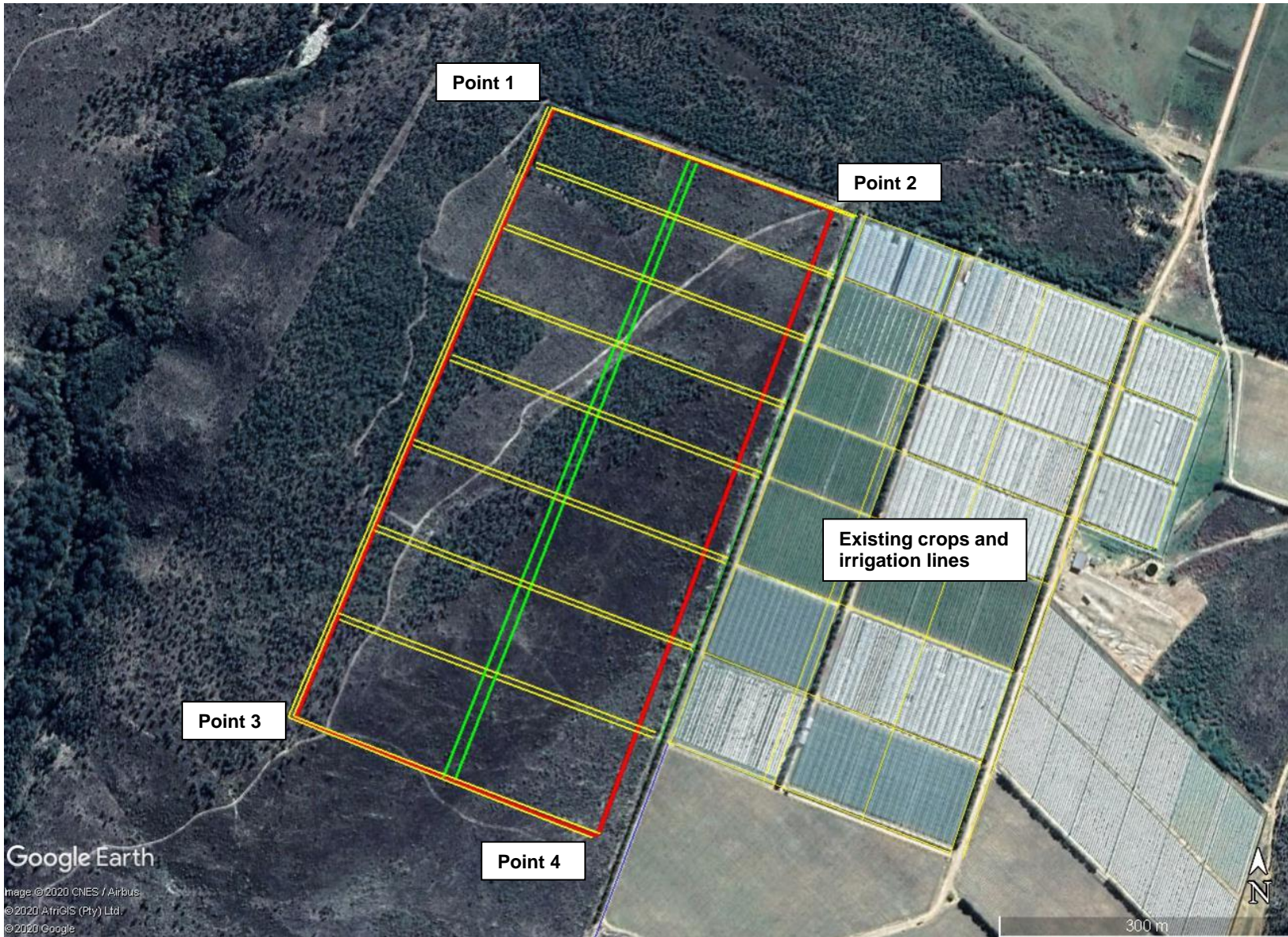





# THE PROPOSED AGRICULTURAL DEVELOPMENT, NAPIER BERRIES, PORTION 3 OF FARM 143, VIERFONTEIN, NAPIER



## SITE CO- ORDINATES

POINT 1:	34° 29' 40.00"S	19° 54' 12.08"E
POINT 2:	34° 29' 43.53"S	19° 54' 23.16"E
POINT 3:	34° 29' 59.49"S	19° 54' 02.62"E
POINT 4:	34° 30' 03.02"S	19° 53' 14.02"E

-  PREFERRED SITE
-  PROPOSED SUB-LINE
-  PROPOSED MAIN-LINE

## DEADP REF:

16/3/3/6/7/1/E1/10/1322/19

## ENVIROAFRICA REF:

0498

JUNE 2020

