



**Legend**

**VEGMAP 2018**

- AZa 3 Lower Gariep Alluvial Vegetation
- NKb 1 Lower Gariep Broken Veld
- NKb 3 Bushmanland Arid Grassland
- SVkd 1 Gordonia Duneveld

**Scale:** 1:72 224

**Date created:** October 15, 2020

Compiled with CapeFarmMapper



**Western Cape Government**

Agriculture

Source: Esri, Maxar, GeoEye, Earthstar Geographics, CNES/Airbus DS, USDA, USGS, AeroGRID, IGN, and the GIS user community  
 Lennestville  
 DAFF

Gamakor LCH Development



Description

2016 Northern Cape CBA map

Legend

- Northern Cape Critical biodiversity Areas 20
  - Critical Biodiversity Area One
  - Critical Biodiversity Area Two
  - Ecological Support Area
  - Other Natural Areas
  - Protected Area
- South African parent farm cadastral Rivers (NFEPA)
  - 1
  - 2
  - 3
- Wetland clusters (NFEPA)
  - National wetlands map 4 (NFEPA)
  - Formal protected areas (NBA 2011)
  - Informal protected areas (IPAES)
  - Marine Protected Areas MPAs (NBA 2011)
  - Aalto Biodiversity Conservation Plan
  - Cape Winelands DMA Biodiversity Assessment
  - Cape Town Biodiversity Network
  - Central-Karoo Biodiversity Assessment
  - Eastern Cape Biodiversity Conservation Plan
  - FSP Bergvlei
  - FSP Breede Valley
  - FSP Cederberg
  - FSP Hesseque
  - FSP Langsberg

1: 36 112



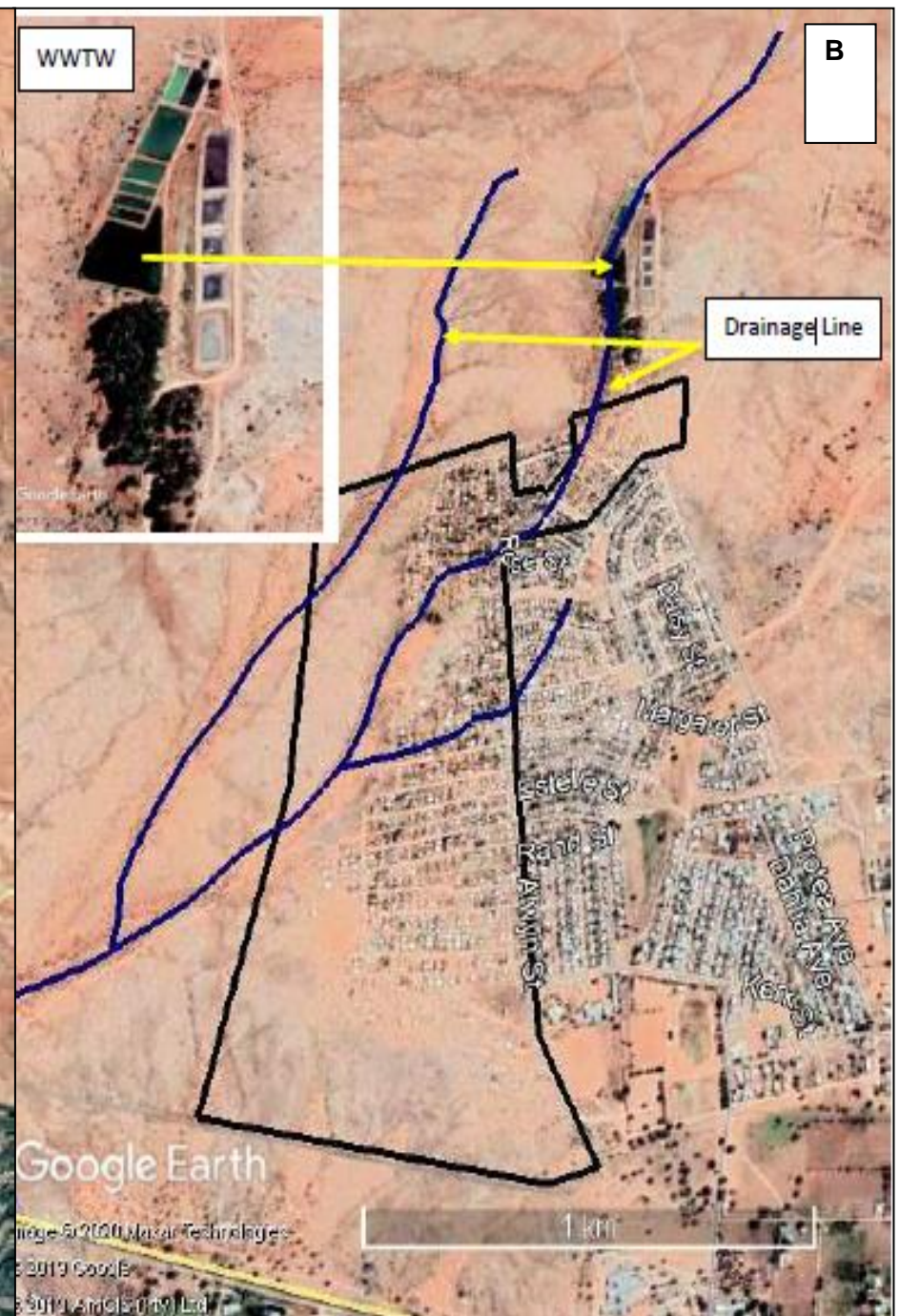
1.6 0 0.82 1.6 Kilometers

WGS 1984 Web\_Mercator\_Auxiliary\_Sphere  
© Latitude Intelligence Group Ltd.

This map is a user-generated static output from an internet mapping site and is for reference only. Data layers that appear on this map may or may not be accurate, current or otherwise reliable.

THIS MAP IS NOT TO BE USED FOR NAVIGATION







**Legend**  
**Wetlands (NFEPA)**

- Artificial
- Natural

**Scale:** 1:72 224  
**Date created:** October 15, 2020

Compiled with CapeFarmMapper



**Western Cape  
 Government**

Agriculture

Source: Esri, Maxar, GeoEye, Earthstar Geographics, CNES/Airbus DS, USDA, USGS, AeroGRID, IGN, and the GIS User Community  
 Esri, HERE, Garmin, (c) OpenStreetMap contributors, and the GIS user community  
 Department of Rural Development and Land Reform, Chief Directorate: National