

### National Landcover Map (Visserspan Farm No. 40)

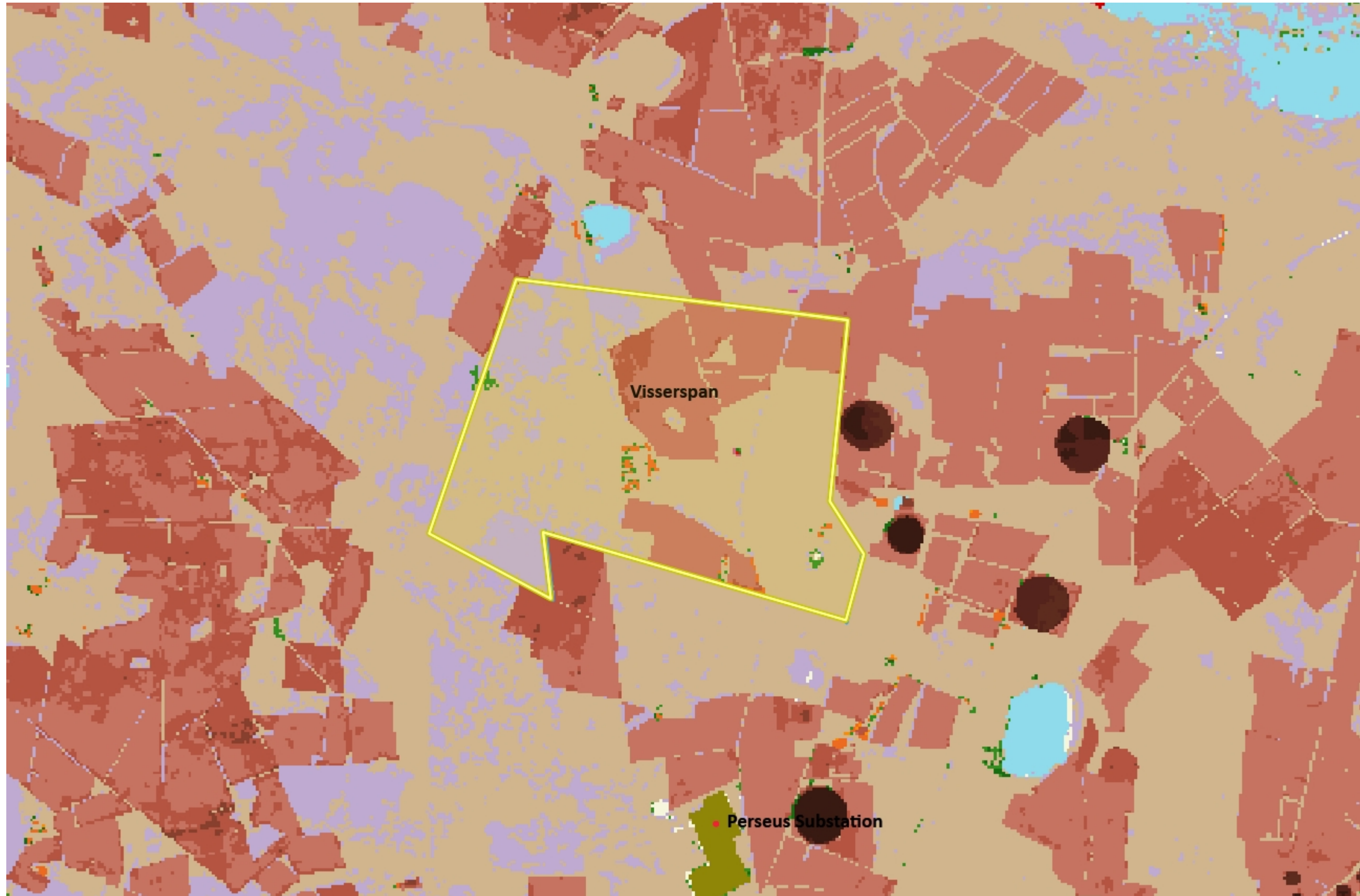
**Description**

Map indicating the 2014 National/Free State Landcover Plan.  
 Visserspan Farm No. 40 on which Solar Photovoltaic Facility is proposed to be developed outlined in yellow.  
 Proposed project site fall within Renewable Energy Development Zone 5.  
 Eskom's Perseus substation, south of Visserspan Farm No. 40, also indicated.

**Legend**

National Landcover 2014

- Water seasonal
- Water permanent
- Wetlands
- Indigenous Forest
- Thicket /Dense bush
- Woodlan/Open bush
- Grassland
- Shrubland fynbos
- Low shrubland
- Cultivated comm fields (high)
- Cultivated comm fields (med)
- Cultivated comm fields (low)
- Cultivated comm pivots (high)
- Cultivated comm pivots (med)
- Cultivated comm pivots (low)
- Cultivated orchards (high)
- Cultivated orchards (med)
- Cultivated orchards (low)
- Cultivated vines (high)
- Cultivated vines (med)
- Cultivated vines (low)
- Cultivated permanent pineapple
- Cultivated subsistence (high)
- Cultivated subsistence (med)
- Cultivated subsistence (low)



1: 50 000



2,5 0 1,27 2,5 Kilometers