

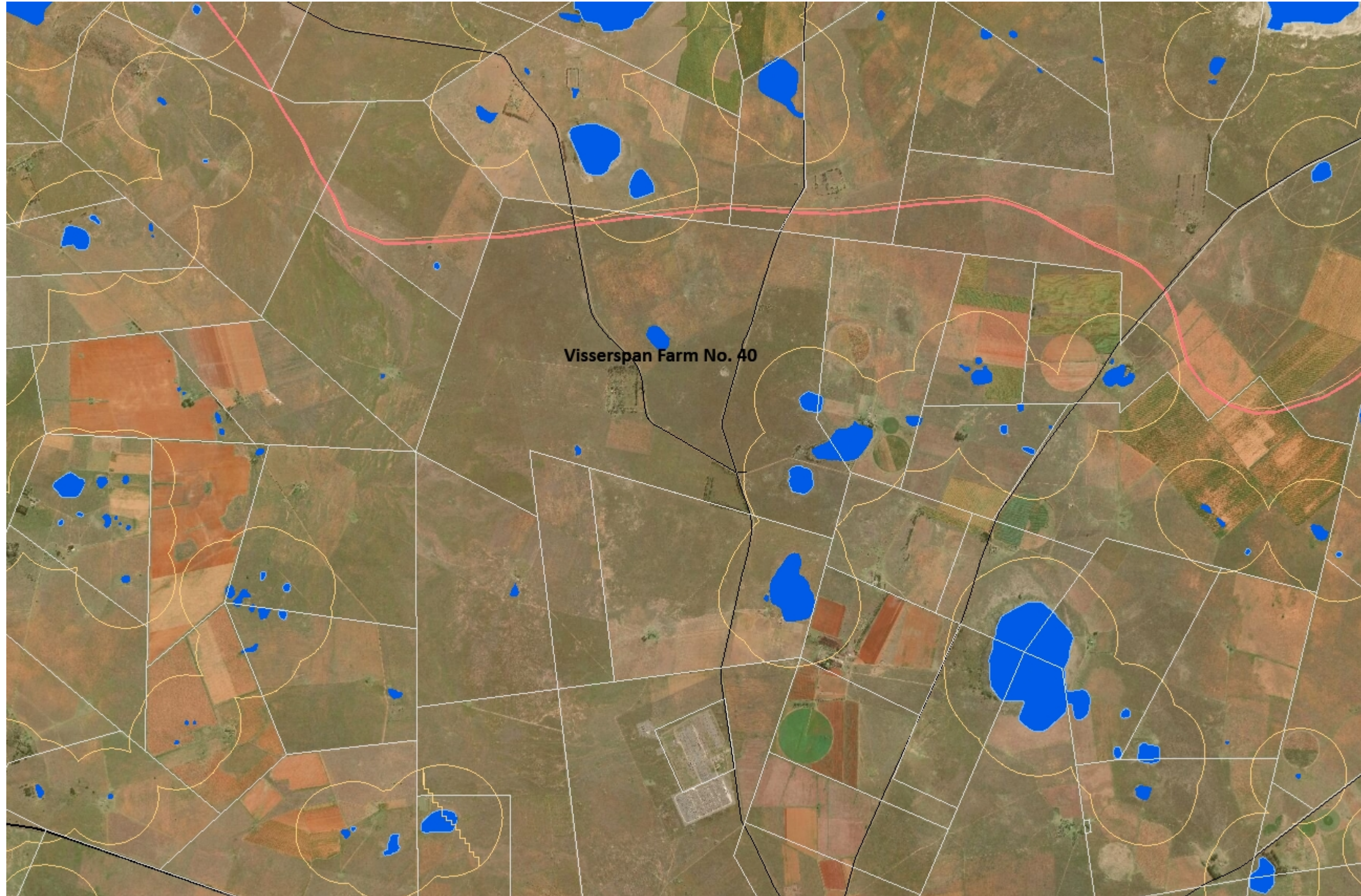
### National Wetlands and NFEPA's Map (Visserspan Farm No. 40)

**Description**

National Wetlands and National Freshwater Ecosystem Priority Areas (NFEPA's) Map indicating watercourses on and around Visserspan Farm No. 40 where proposed Solr Photovoltaic Facility site is located. Eskom's Perseus substation lies to the south of Visserspan Farm No. 40.

**Legend**

- ★ Wetland Interventions
- Rehabilitated Wetlands
- Towns
- Local municipalities
- Farm boundaries
- National roads
- Secondary roads
- ARTERIAL ROUTE
- MAIN ROAD
- SECONDARY ROAD
- Rivers
- Water management areas
- Sub water management areas
- Fish points
- Fish sanctuary: CR/EN fish
- Fish sanctuary: other fish
- Wetland cluster
- NFEPA rivers
- 1
- 5
- 10
- ▨ National parks (NBA 2011)
- ▨ Formal land-based (NBA 2011)
- ▨ Informal land-based (NPAES)
- National wetlands map 4 (NFEPA wetland m
- National wetlands map 4 (NFEPA wetland m - Estuaries)



1: 50 000



This map is a user generated static output from an Internet mapping site and is for reference only. Data layers that appear on this map may or may not be accurate, current, or otherwise reliable.

THIS MAP IS NOT TO BE USED FOR NAVIGATION

