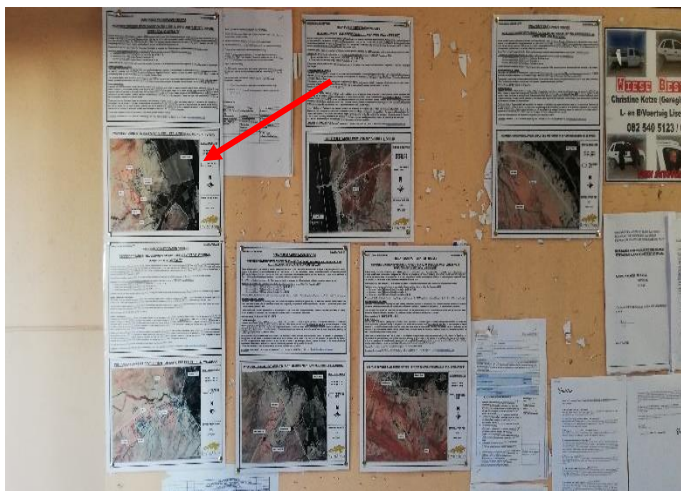


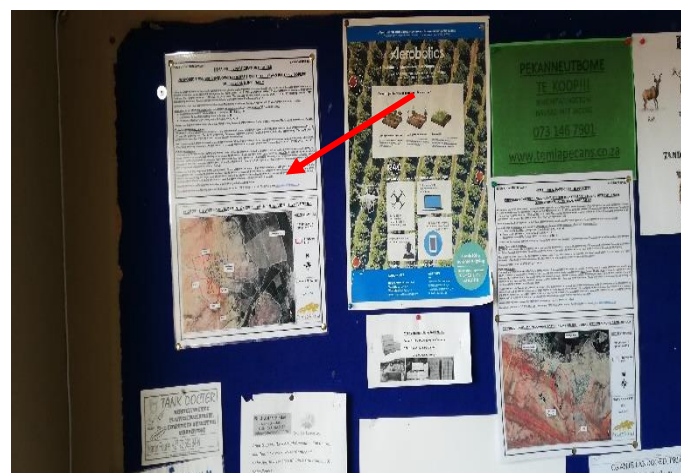
**Photo 1: Poster placed at the !Kheis Municipal offices in Groblershoop.**



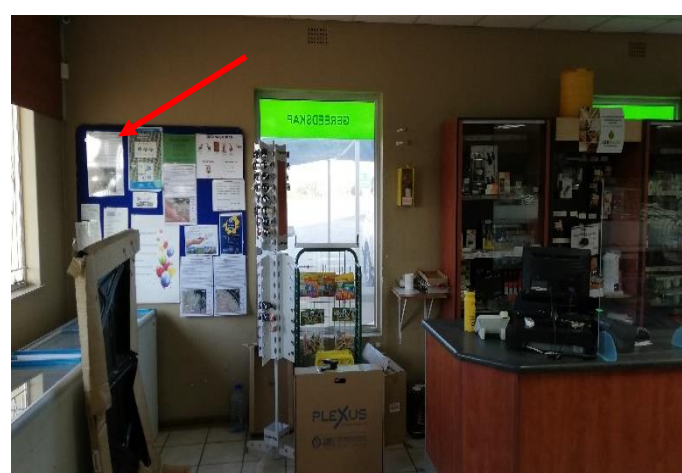
**Photo 2: Poster placed at the !Kheis Municipal offices in Groblershoop**



**Photo 3: Poster placed at the public notice board at the AgriMark in Groblershoop**



**Photo 4: Poster placed at the public notice board at the AgriMark in Groblershoop.**



**Photo 5: Poster placed corner of area entering the proposed site of development.**



**Photo 6: Poster placed at entrance of the Topline Primary Health Care Clinic.**



**Photo 7: Poster (red arrow) placed at entrance of existing households within the “cul-de-sac”.**



**Photo 8: Poster (red arrow) placed at entrance of a local store within the “cul-de-sac”.**



**Photo 5: Letter drop-off at gate of household within the “cul-de-sac”.**



**Photo 6: Letter drop-off along the eastern border south-east of the proposed site for development.**



**Photo 7: Letter drop-off at households located along the eastern section of the “cul-de-sac”.**



**Photo 8: Letter drop-off to households situated adjacent to the proposed site earmarked for development.**



**Photo 9: Poster (red arrow) placed at entrance of local store along the eastern border of the proposed site for development.**



**Photo 10: Letter drop-off at household along the north-eastern border of the proposed site.**



Location of posters indicated by the red dots and yellow dots indicate letter drop-offs (Note, households between indicated yellow dots were also notified).

