



Zwartfontein dam_Biodiversity

Legend

Farm Portions

BSP ESA: Restore

ESA2: Restore from plantation or high density IAP

ESA2: Restore from other land use

ESA2: Restore where appropriate (CT)

BSP ESA

ESA: Aquatic

ESA: Terrestrial

BSP CBA: Degraded

CBA2: Aquatic

CBA2: Terrestrial

BSP CBA

CBA: Terrestrial

CBA: Terrestrial (CT)

CBA: Forest

CBA: River

CBA: Estuary

CBA: Wetland

CBA: Aquatic (CT)

BSP Protected Areas

Scale: 1:18 056

Date created: November 20, 2019

Compiled with CapeFarmMapper



**Western Cape
Government**

Agriculture

Department of Rural Development and Land Reform: Chief Surveyor-General
Esri, HERE, Garmin, (c) OpenStreetMap contributors, and the GIS user community
Source: Esri, DigitalGlobe, GeoEye, Earthstar Geographics, CNES/Airbus DS, USDA, AeroGRID, IGN, and the
CapeNature



Zwartfontein Dam_ Biodiversity Spatial

Legend

Rivers

- - Non-Perennial

BSP ESA: Restore

- ESA2: Restore from other land use

BSP CBA

- CBA: Terrestrial
- CBA: Wetland

Scale: 1:9 028

Date created: November 19, 2020

Compiled with CapeFarmMapper



**Western Cape
Government**

Agriculture

Source: Esri, Mapbox, GeoEye, Earthstar Geographics, CNES/Airbus DS, USDA, USGS, AeroGRID, IGN, and the GIS User Community
Department of Rural Development and Land Reform, Chief Directorate: National Geo-Spatial Information
Department of Agriculture, Forestry and Fisheries, DEA



Zwartfontein Dam_ Wetlands

Legend

Wetlands (NFEPA)

- Artificial
- Natural

Wetlands (NWM5)

- Channelled valley-bottom wetland
- Depression wetland
- Seep wetland
- Unchannelled valley-bottom wetland

Scale: 1:36 112

Date created: November 19, 2020

Compiled with CapeFarmMapper



Western Cape Government

Agriculture



Zwartfontein Dam_ Watercourses

Legend

Rivers (DWS)

- Perennial
- - Unknown type

Rivers

- Perennial
- - Non-Perennial

Wetlands (NFEPA)

- Artificial
- Natural

Wetlands (NWM5)

- Channelled valley-bottom wetland
- Depression wetland
- Seep wetland
- Unchannelled valley-bottom wetland

Scale: 1:36 112

Date created: November 19, 2020

Compiled with CapeFarmMapper



Western Cape Government

Agriculture

Source: Esri, DeLorme, GeoEye, Earthstar Geographics, CNES/Airbus DS, USDA, USGS, AeroGRID, IGN, and the GIS User Community
Department of Rural Development and Land Reform, Chief Directorate: National Geo-Spatial Information



Zwartfontein Dam_ Watercourses

Legend

Rivers

- Perennial
- - Non-Perennial

Rivers (DWS)

- Perennial
- - Unknown type

Scale: 1:36 112

Date created: November 19, 2020

Compiled with CapeFarmMapper



**Western Cape
Government**

Agriculture

Source: Esri, Maxar, GeoEye, Earthstar Geographics, CNES/Airbus DS, USDA, USGS, AeroGRID, IGN, and the GIS User Community
Department of Rural Development and Land Reform, Chief Directorate: National Geo-Spatial Information



Zwartfontein Dam_ Dams

Legend

 Dams

Scale: 1:36 112

Date created: November 19, 2020

Compiled with CapeFarmMapper



**Western Cape
Government**

Agriculture

Source: Esri, Maxar, GeoEye, Earthstar Geographics, CNES/Airbus DS, USDA, USGS, AeroGRID, IGN, and the GIS User Community
Department of Rural Development and Land Reform, Chief Directorate: National Geo-Spatial Information



Zwartfontein Dam_ Vegetation Type

Legend

VEGMAP 2018

FRs 9 Swartland Shale
Renosterveld

Scale: 1:18 056

Date created: November 19, 2020

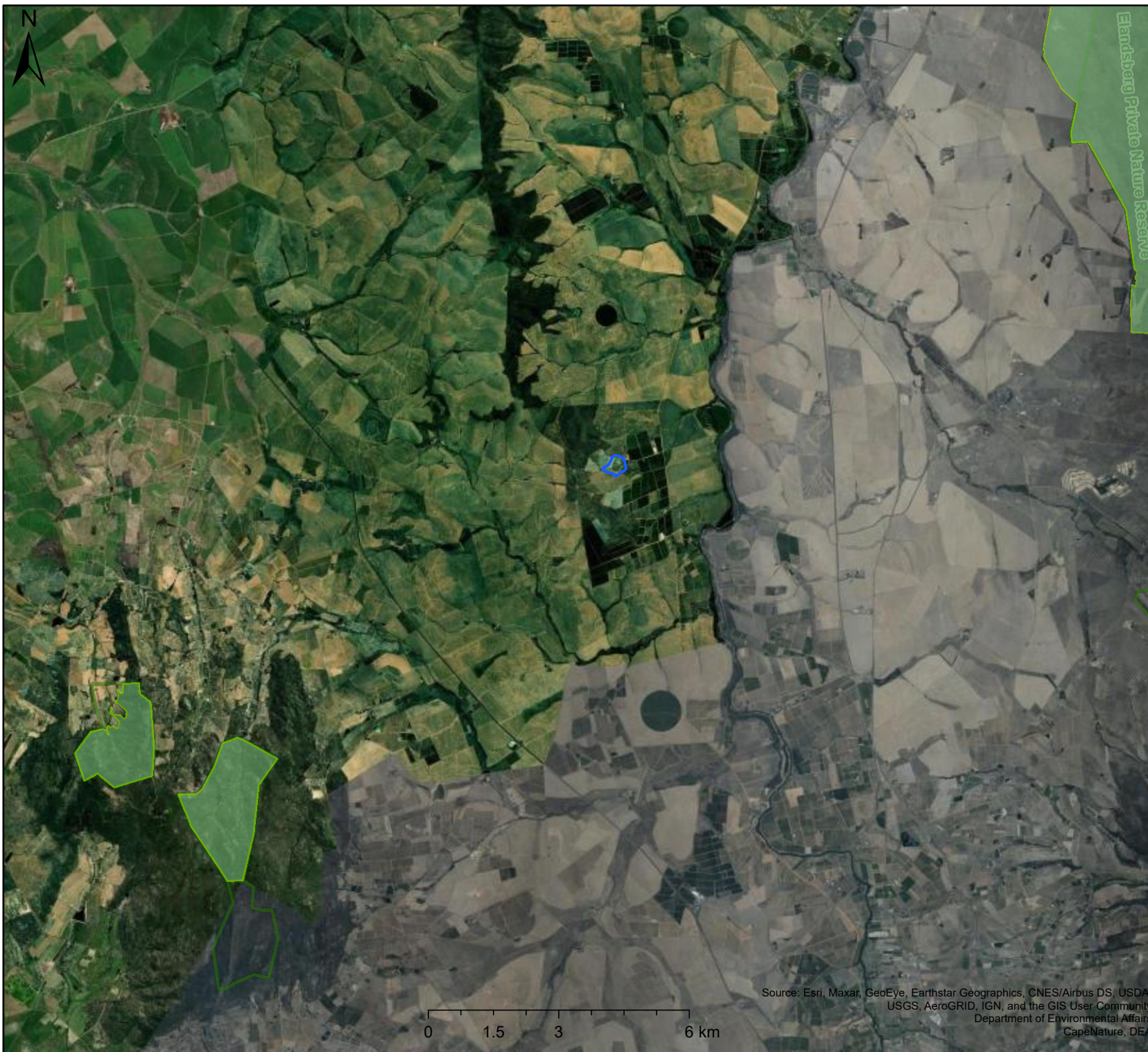
Compiled with CapeFarmMapper



**Western Cape
Government**

Agriculture

Source: Esri, Maxar, GeoEye, Earthstar Geographics, CNES/Airbus DS, USDA, USGS, AeroGRID, IGN, and the GIS User Community DAFF



Zwartfontein Dam_ Protected Areas

Legend

 BSP Protected Areas

SA Protected Areas

 Nature Reserve

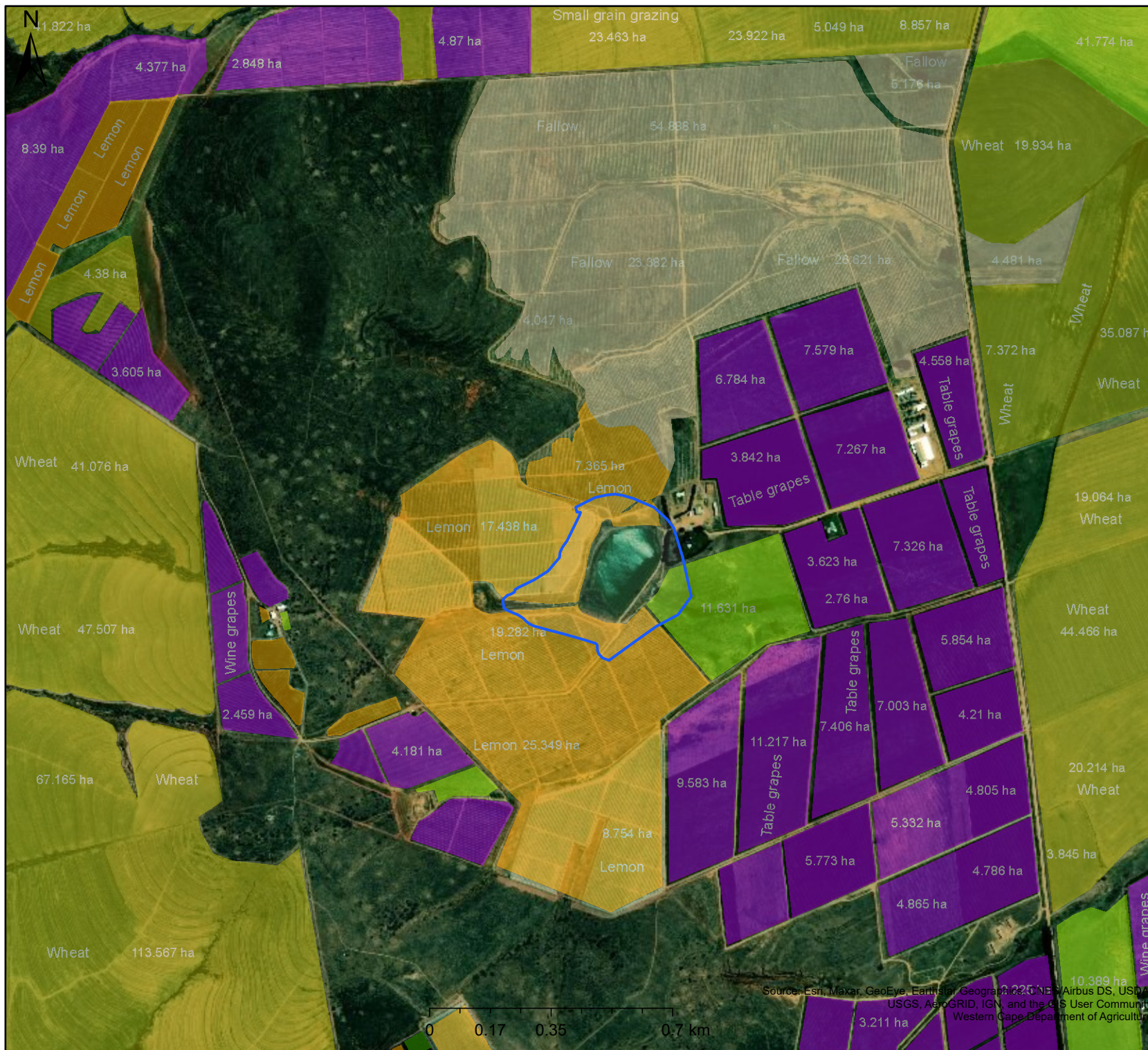
Scale: 1:144 448
Date created: November 19, 2020

Compiled with CapeFarmMapper



**Western Cape
Government**

Agriculture



Zwartfontein Dam_ Crop Census

Legend

Winter Crops 2017

- Citrus fruits
- Grains and mixed
- Grapes
- Planted pastures
- Tree fruit - other
- Other crops

Scale: 1:18 056

Date created: November 19, 2020

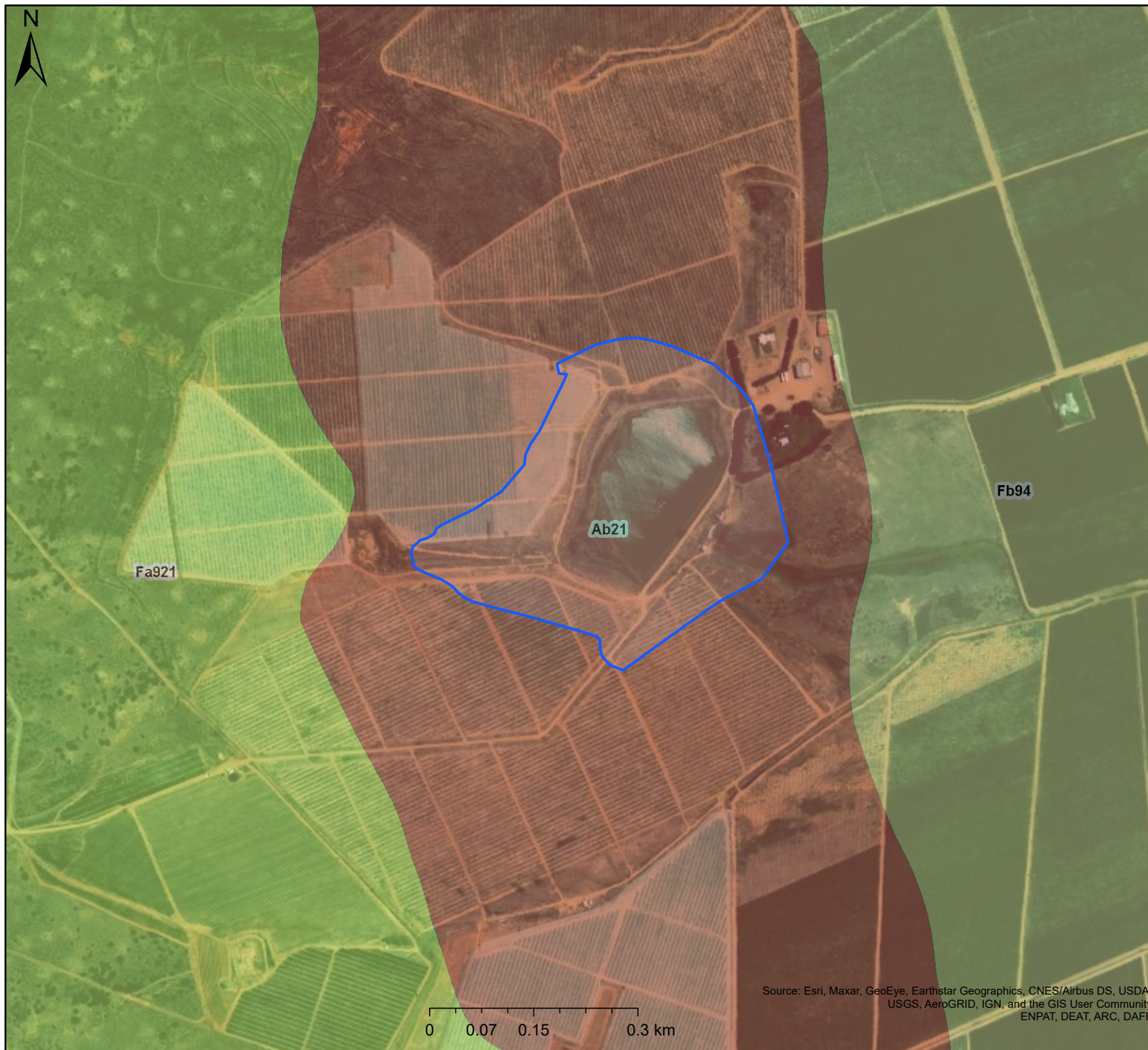
Compiled with CapeFarmMapper



**Western Cape
Government**

Agriculture

Source: Esri, Maxar, GeoEye, Earthstar Geographics, CNR/Airbus DS, USDA, USGS, AeroGRID, IGN, and the GIS User Community
Western Cape Department of Agriculture



Zwartfontein Dam_

Land Types

Legend

Landtypes	
Undefined	Red B horizons
B horizons not red	Red and yellow dystrophic and/or mesotrophic
Dystrophic and/or mesotrophic; red soils not widespread	Red and yellow, high base status, usually < 15% clay
Dystrophic and/or mesotrophic; red soils widespread	Red, dystrophic and/or mesotrophic
Eutrophic; red soils not widespread	Red, high base status < 300 mm deep
Eutrophic; red soils widespread	Red, high base status > 300 mm deep (no dunes)
In addition, one or more of: vertic, melanic, red structured diagnostic horizons	Red, high base status > 300 mm deep (with dunes)
Lime generally present in the entire landscape	Regic sands and other soils
Lime rare or absent in the entire landscape	Regic sands dominant
Lime rare or absent in upland soils but generally present in low-lying soils	Rock areas with miscellaneous soils
Predominantly deep (Lamotte form)	Rock with little or no soil
Predominantly shallow (Houwhoek form)	Undifferentiated
	Undifferentiated deep deposits
	Yellow, dystrophic and/or mesotrophic
	Yellow, high base status, usually < 15% clay

Scale: 1:9 028

Date created: November 19, 2020

Compiled with CapeFarmMapper



**Western Cape
Government**

Agriculture

Source: Esri, Maxar, GeoEye, Earthstar Geographics, CNES/Airbus DS, USDA, USGS, AeroGRID, IGN, and the GIS User Community
ENPAT, DEAT, ARC, DAFF



Zwartfontein Dam_ Landcover

Legend

Land Cover 2018 (73 class)	
artificial dams (including canals)	low shrubland (other)
artificial flooded mine pits	low shrubland (succulent karoo)
artificial sewage ponds	mangrove wetlands
bare riverbed material	mine: tailings and resource dumps
coastal sand & dunes	mines: extraction pits, quarries
commercial	mines: salt mines
commercial annual crops non-pivot irrigated	mines: surface infrastructure
commercial annual crops pivot irrigated	natural estuaries & lagoons
commercial annual crops rain-fed / dryland	natural grassland
contiguous & dense plantation forest	natural lakes
contiguous (indigenous) forest	natural ocean & coastal
contiguous low forest & thicket	natural pans (flooded @ observation times)
cultivated commercial permanent orchards	natural rivers
cultivated commercial permanent pineapples	natural rock surfaces
cultivated commercial permanent vines	open & sparse plantation forest
cultivated commercial sugarcane non-pivot	open woodland
cultivated commercial sugarcane pivot irrigated	other bare
cultivated emerging farmer sugarcane non-pivot	residential formal (bare)
dense forest & woodland	residential formal (bush)
dry pans	residential formal (low veg / grass)
eroded lands	residential formal (tree)
fallow land & old fields (bare)	residential informal (bare)
fallow land & old fields (bush)	residential informal (bush)
fallow land & old fields (grass)	residential informal (low veg / grass)
fallow land & old fields (low shrub)	residential informal (tree)
fallow land & old fields (trees)	roads & rails (major linear)
fallow land & old fields (wetlands)	sand dunes (terrestrial)
herbaceous wetlands (currently mapped)	smallholdings (bare)
herbaceous wetlands (previously mapped)	smallholdings (bush)
industrial	smallholdings (low veg / grass)
land-fills	smallholdings (tree)
low shrubland (fynbos)	sparsely wooded grassland
low shrubland (nama karoo)	subsistence / small-scale annual crops
	temporary unplanted (clear-felled) plantation forest
	urban recreational fields (bare)

Scale: 1:9 028

Date created: November 19, 2020

Compiled with CapeFarmMapper



**Western Cape
Government**

Agriculture



Zwartfontein Dam_ Soil Types

Legend

Soil Types

- AB - Red-yellow well drained soils lacking a strong texture contrast
- AC - Red-yellow well drained soils lacking a strong texture contrast
- BA - Soils with a plintic catena
- BB - Soils with a plintic catena
- CA - Soils with a strong texture contrast
- CB - Soils with a strong texture contrast
- DA - Soils with a high clay content
- EA - Soils with limited pedological development
- EB - Soils with limited pedological development
- EC - Soils with limited pedological development
- ED - Soils with limited pedological development
- EE - Soils with limited pedological development
- FA - Podzolic soils
- GA - Rocky areas

Scale: 1:9 028

Date created: November 19, 2020

Compiled with CapeFarmMapper



**Western Cape
Government**

Agriculture



Zwartfontein Dam_ Geological

Legend

Scale: 1:72 224

Date created: November 19, 2020

Compiled with CapeFarmMapper



**Western Cape
Government**

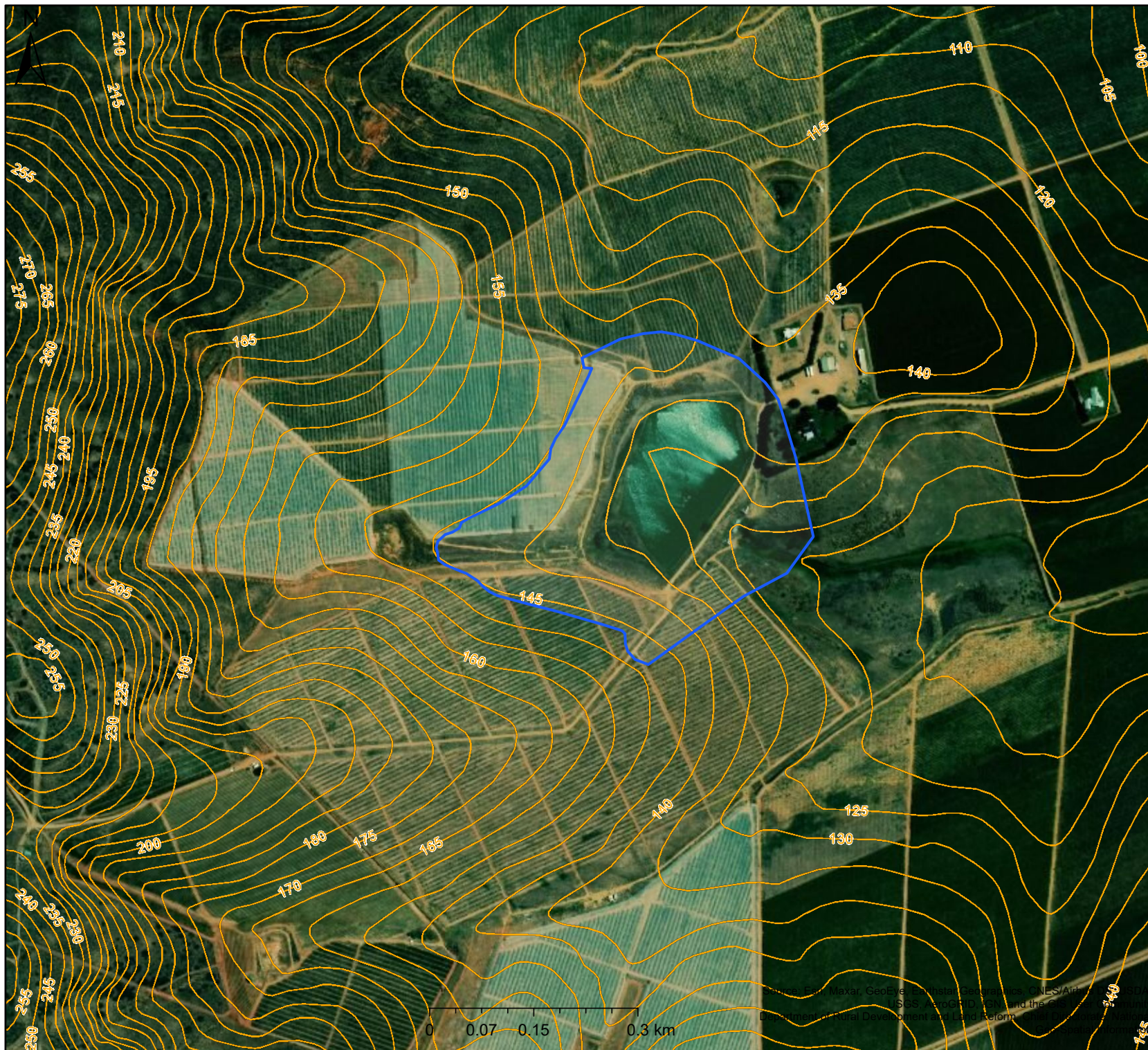
Agriculture

Source: Esri, Maxar, GeoEye, Earthstar Geographics, CNES/Airbus DS, USDA, USGS, AeroGRID, IGN, and the GIS User Community
Council for Geoscience

Zwartfontein Dam_ 5m Contours

Legend

Contours 5m



Scale: 1:9 028

Date created: November 19, 2020

Compiled with CapeFarmMapper



**Western Cape
Government**

Agriculture