



## Legend

### VEGMAP 2018

- FRs 9 Swartland Shale Renosterveld

Scale: 1:18 056  
Date created: November 17, 2020

Compiled with CapeFarmMapper



**Western Cape  
Government**

Agriculture

Source: Esri, Maxar, GeoEye, Earthstar Geographics, CNES/Airbus DS, USDA, USGS, AeroGRID, IGN, and the GIS User Community  
Department of Rural Development and Land Reform: Chief Surveyor-General  
Esri, HERE, Garmin, (c) OpenStreetMap contributors, and the GIS user community





## Legend

### Rivers (DWS)

— Perennial

### Rivers

— Perennial

- - - Non-Perennial

### BSP ESA: Restore

ESA2: Restore from other land use

### BSP CBA

CBA: Terrestrial

CBA: River

CBA: Wetland

Scale: 1:18 056

Date created: November 17, 2020

Compiled with CapeFarmMapper

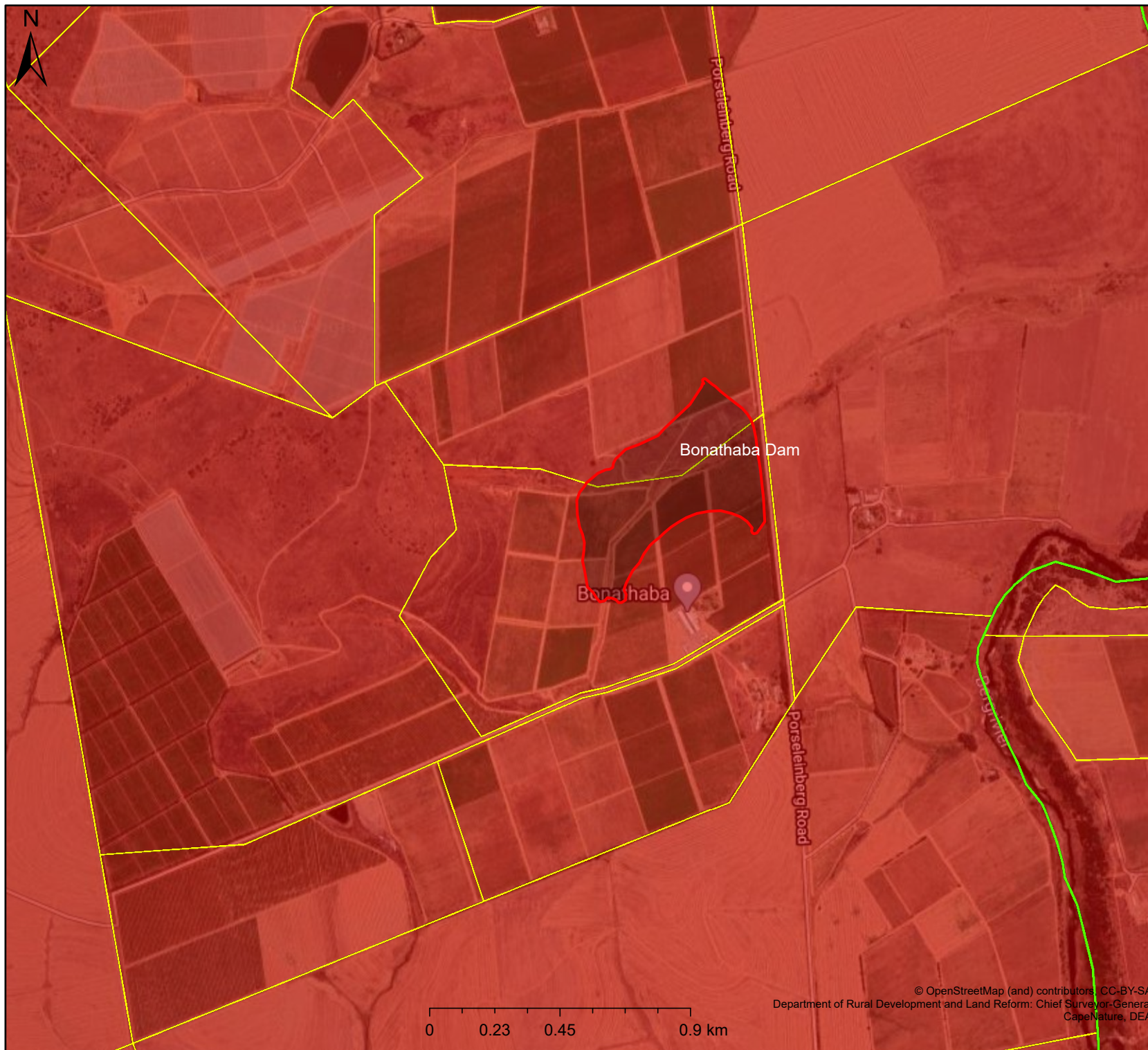


**Western Cape  
Government**

Agriculture

Source: Esri, Maxar, GeoEye, Earthstar Geographics, CNES/Airbus DS, USDA, USGS, AeroGRID, IGN, and the GIS User Community  
Department of Rural Development and Land Reform: Chief Surveyor-General  
Esri, HERE, Garmin, (c) OpenStreetMap contributors, and the GIS user community







# Ecosystems Threat Status Map

## Legend

 Administrative Registration

 Farm Portions

## Ecosystem Threat Status 2016

 CR (A1 and D1)

**Scale:** 1:18 056

**Date created:** May 21, 2020

Compiled with CapeFarmMapper



**Western Cape  
Government**

Agriculture

© OpenStreetMap (and) contributors, CC-BY-SA  
Department of Rural Development and Land Reform: Chief Surveyor-General  
CapeNature, DEA





## Legend

### Wetlands (NFEPA)

Artificial

Natural

### Rivers (DWS)

Perennial

### Rivers

Perennial

Non-Perennial

Scale: 1:18 056

Date created: November 17, 2020

Compiled with CapeFarmMapper



**Western Cape  
Government**

Agriculture

Source: Esri, Maxar, GeoEye, Earthstar Geographics, CNES/Airbus DS, USDA, USGS, AeroGRID, IGN, and the GIS User Community  
Department of Rural Development and Land Reform: Chief Surveyor-General  
Esri, HERE, Garmin, (c) OpenStreetMap contributors, and the GIS user community





# NFEPA Map

## Legend

Administrative Registration

Farm Portions

## Wetlands (NWM5)

Channelled valley-bottom wetland

Depression wetland

Seep wetland

Unchannelled valley-bottom wetland

## Wetlands (NFEPA)

Artificial

Natural

## Rivers

Perennial

Non-Perennial

## Rivers (DWS)

Perennial

Unknown type

Dams

**Scale:** 1:36 112

**Date created:** May 21, 2020

Compiled with CapeFarmMapper



**Western Cape  
Government**

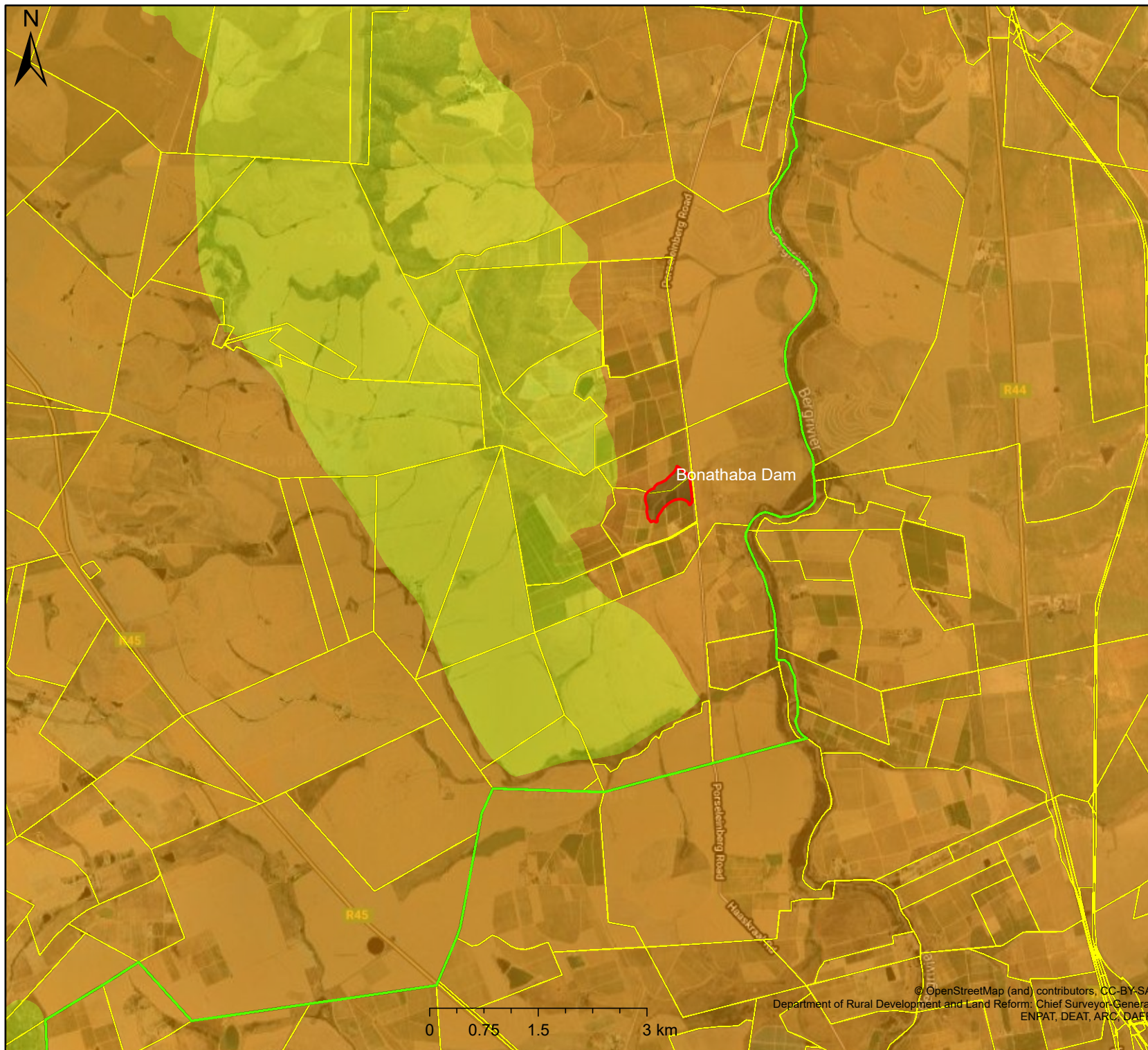
Agriculture

© OpenStreetMap (and) contributors, CC-BY-SA  
Department of Rural Development and Land Reform, Chief Surveyor-General  
Department of Rural Development and Land Reform, Chief Directorate: National  
Geo-Spatial Information









# Soil Erodibility Map

## Legend

 Administrative Registration

 Farm Portions

## Soil Erodibility


 Waterbody

 Very Low

 Low

 Moderate

 High

 Very High

**Scale:** 1:72 224

**Date created:** May 21, 2020

Compiled with CapeFarmMapper

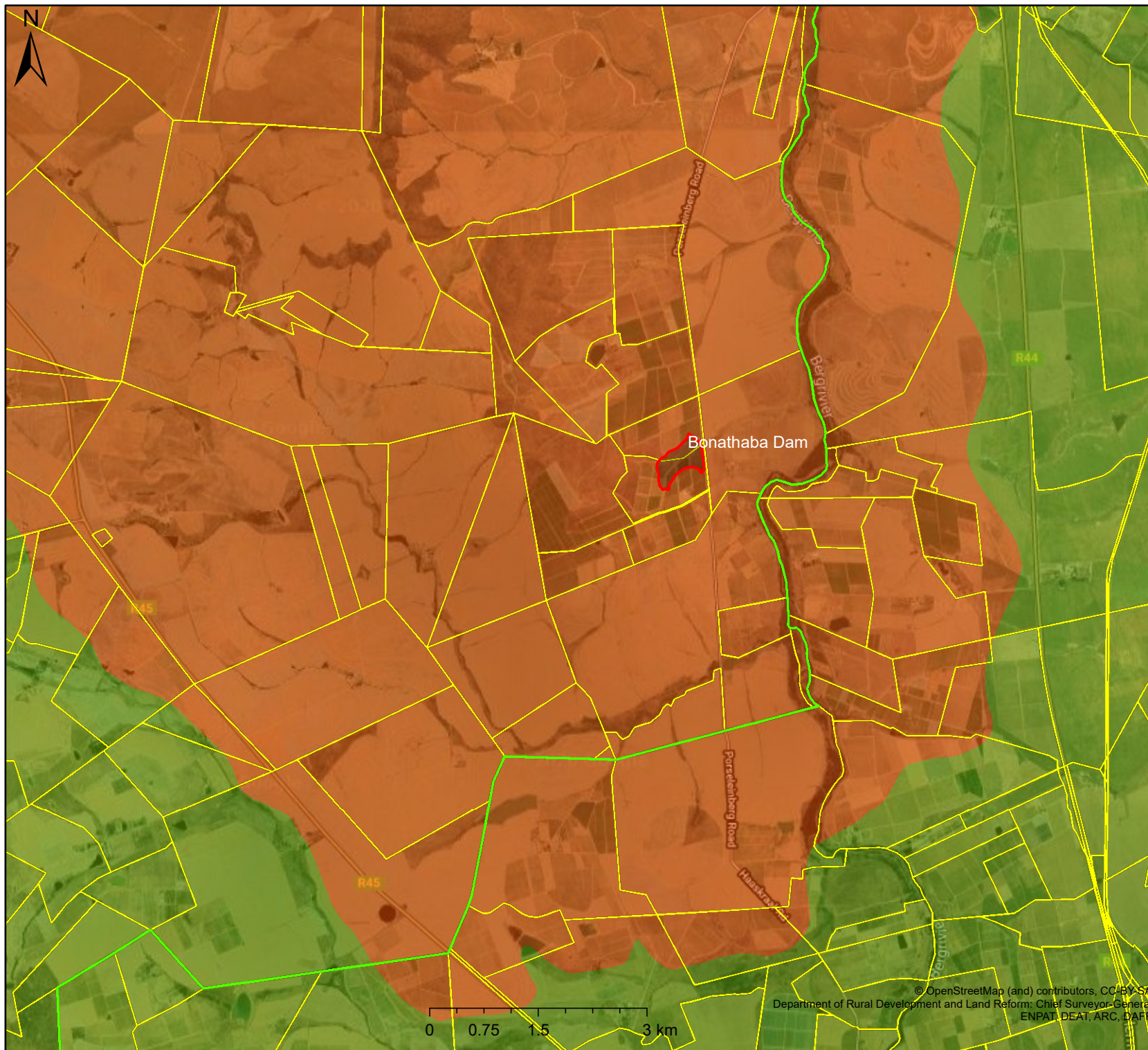


**Western Cape  
Government**

Agriculture



© OpenStreetMap (and) contributors, CC-BY-SA  
Department of Rural Development and Land Reform: Chief Surveyor-General  
ENPAT, DEAT, ARC, DAFF











# Soil Clay & Depth Map

## Legend

-  Administrative Registration
-  Farm Portions

## Soil Clay and Depth

-  Clay: < 15%; Depth < 450 mm
-  Clay: < 15%; Depth >= 450 mm and < 750 mm
-  Clay: < 15%; Depth >= 750 mm
-  Clay: >= 15% and < 35%; Depth < 450 mm
-  Clay: >= 15% and < 35%; Depth >= 450 mm and < 750 mm
-  Clay: >= 15% and < 35%; Depth >= 750 mm

Scale: 1:72 224

Date created: May 21, 2020

Compiled with CapeFarmMapper

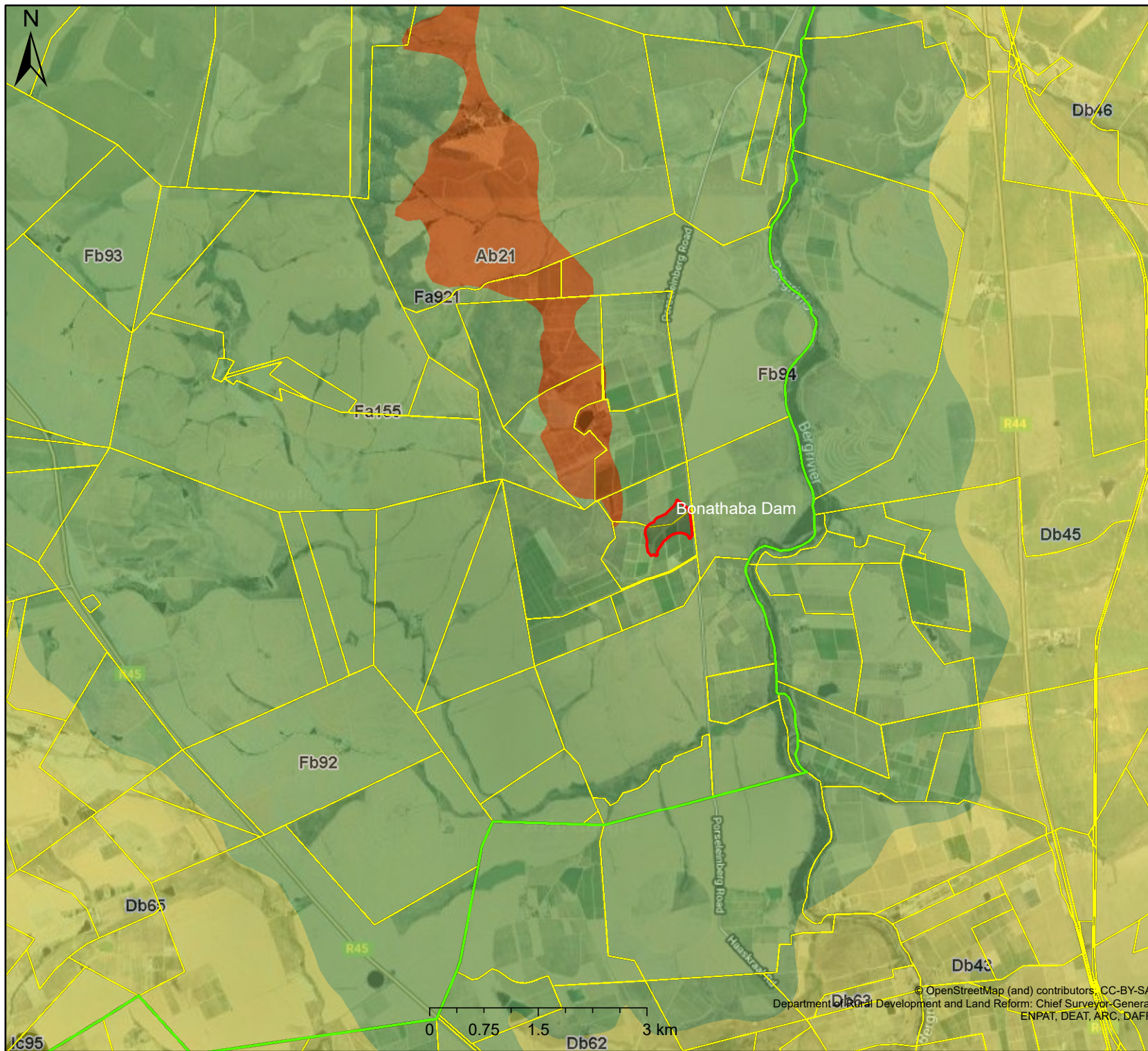


**Western Cape  
Government**

Agriculture

© OpenStreetMap (and) contributors, CC-BY-SA  
Department of Rural Development and Land Reform: Chief Surveyor-General  
ENPAT, DEAT, ARC, DAFF





# Soils & Geology (ENPAT) Map

## Legend

Administrative Registration

Farm Portions

## Broad Soils Classification (ENPAT)

Glenrosa and/or Mispah forms (other soils may occur)

Grey regic sands

Miscellaneous land classes, rocky

Plinthic catena

Prismaeutanic and/or pedocutanic diagnostic horizons dominant

Red-yellow apedal, freely drained soils

Soils with a diagnostic ferrihumic horizon

Vertic, melanic, red structured diagnostic horizons, undifferentiated

Scale: 1:72 224

Date created: May 21, 2020

Compiled with CapeFarmMapper



**Western Cape  
Government**

Agriculture

© OpenStreetMap (and) contributors, CC-BY-SA  
Department of Rural Development and Land Reform: Chief Surveyor-General  
ENPAT, DEAT, ARC, DAFF