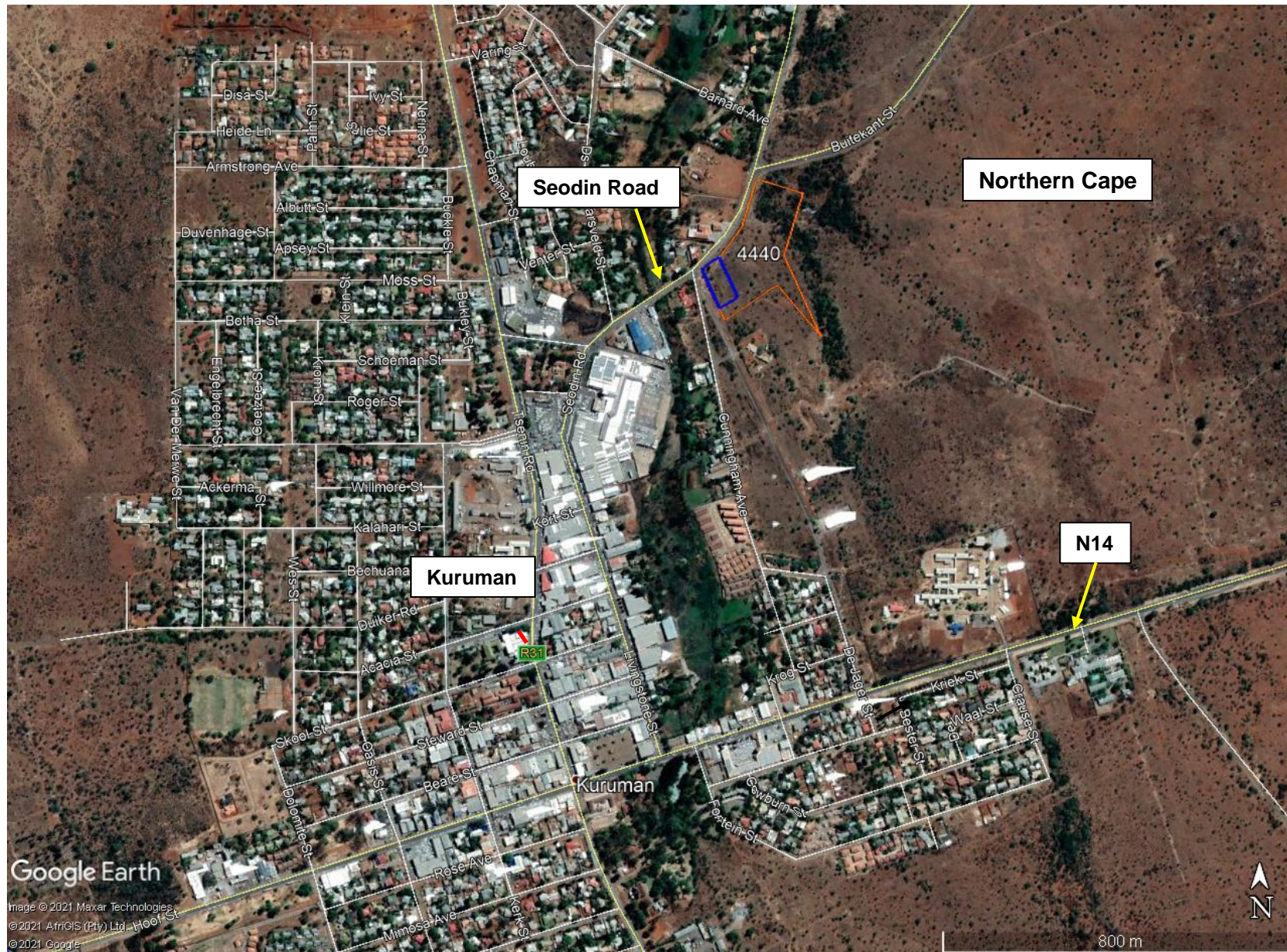


THE PROPOSED BUSINESS HUB DEVELOPMENT ON ERF 4440, KURUMAN



SITE CO-ORDINATES

27° 27' 09.86" S,
23° 26' 14.24" E.

 Erf 4440

 Proposed Site

ENVIROAFRICA REF:

0516

May 2021



Google Earth

Image © 2021 Maxar Technologies
© 2021 AFRIOIS (Pty) Ltd
© 2021 Google

800 m

THE PROPOSED BUSINESS HUB DEVELOPMENT ON ERF 4440, KURUMAN



SITE CO-ORDINATES

27° 27' 09.86" S,
23° 26' 14.24" E.

 Erf 4440

 Proposed Site

ENVIROAFRICA REF:

0516

May 2021



Google Earth

© 2021 AfriGIS (Pty) Ltd.
Image © 2021 Maxar Technologies

100 m