



ARCHAEOLOGICAL HERITAGE: PROPOSED LETTER OF EXEMPTION FROM FURTHER SPECIALIST STUDIES & MITIGATION

PROPOSED CONSTRUCTION OF A 35M HIGH TELECOMMUNICATION MAST ON PORTION 62 OF THE FARM KLIPHEUVEL 291, JOUBERTINIA RD, SARAH BAARTMAN DISTRICT MUNICIPALITY, EASTERN CAPE

23 June, 2021

1. Introduction

ACRM was appointed by EnviroAfrica, on behalf of Insite Towers to conduct a desktop screening study for the proposed construction of a telecommunications mast and base station on Portion 62 of the Farm Klipheuvel 291 (Kou-Kamma Municipality), Joubertinia RD Sarah Baartman District Municipality, in the Eastern Cape (Figures 1-3).

EnviroAfrica is the independent Environmental Assessment Practitioner responsible for facilitating environmental authorisation for the project. A Basic Assessment process will be followed.

2. Project description

The development entails construction of a free standing, 35m high lattice telecommunication mast including associated infrastructure (equipment container & generator), on the Farm Klipheuvel 291/61 near Louterwater in the Eastern Cape. The base station will have a total developmental footprint size of approximately 110m². The site will be enclosed by fencing for security reasons (Figures 6 & 7).

3. The study site

The proposed telecoms site (33°47'38.26"S and 23°37'29.29"E) is located on the Farm Klipheuvel 291/62 alongside a gravel farm road in the town of Louterwater which is located alongside the R62 near the entrance to the Langkloof. The primary use of the 68ha property is agriculture. Surrounding land use is agriculture, informal housing, residential and commercial and open spaces.

4. Approach to the study

A desk top study was undertaken that entailed a search of the SAHRIS content management website.

5. Archaeological context

Until very recently no archaeological work has been conducted in Louterwater. The closest known areas where commercial Archaeological Impact Assessments (or AIAs) have been done, is at the coast near Humansdorp, where large wind turbine developments occur on the flat coastal plain. Caves and rock art sites occur in the Kouga and Baviaanskloof Mountains, but these are located many kilometres distance from Louterwater. A few HIAs have been conducted in the Hankey and Patensie areas more than 100kms further to the south, where mostly ephemeral scatters and isolated ESA, MSA and LSA tools have been recorded (Binneman 2010, 2002).



Agency for Cultural Resource Management

Specialists in Archaeological Studies and Heritage Resource Management

Only one impact study has been conducted in Louerwater, where a few isolated and weathered Middle Stone Age flakes (of low significance) were recorded on the farm Grootkloof during an AIA for the proposed Granor Passi Effluent Evaporation ponds a few kms north of Louerwater. The remains were found in old agricultural land in a degraded and transformed context (Booth 2016).

No archaeological work has been done in Joubertinia, the closest town to Louerwater.

6. Anticipated impact

Given the highly degraded footprint area (Figure 5), and surrounding transformed agricultural land (Figure 4), the impact of the proposed development of a 35m high telecommunication on Farm 291/61 Louerwater, is rated as being very low to negligible.

7. Conclusion

It is considered highly unlikely that any archaeological remains will be encountered in the small, 100m² footprint area.

8. Recommendations

Given the anticipated low impact significance of the proposed development on archaeological resources, there are no objections to authorisation of the proposed project.

It is therefore recommended that exemption from further specialist archaeological studies and mitigation be granted.



Agency for Cultural Resource Management

Specialists in Archaeological Studies and Heritage Resource Management

9. References

Binneman, JNF. 2002. Archaeological Heritage Sensitivity Investigation of the proposed burial site of Sarah Baartman at Hankey, Kouga Municipality, Eastern Cape Province.

Binneman, JNF. 2010. a phase 1 archaeological heritage impact assessment of the proposed residential and mixed-use development on Erf 17 and Erf 1480, Weston residential area, Hankey, Kouga Municipality, Eastern Cape Province

Boothe, C. 2016. A Phase 1 Archaeological Impact Assessment for the proposed Granor Passi Effluent Evaporation Ponds, Louterwater, Sarah Baartman District Municipality, Kouga Local Municipality, Eastern Cape Province. Report prepared for SRK Consulting. Booth Heritage Consulting, Makhanda.



Agency for Cultural Resource Management
Specialists in Archaeological Studies and Heritage Resource Management

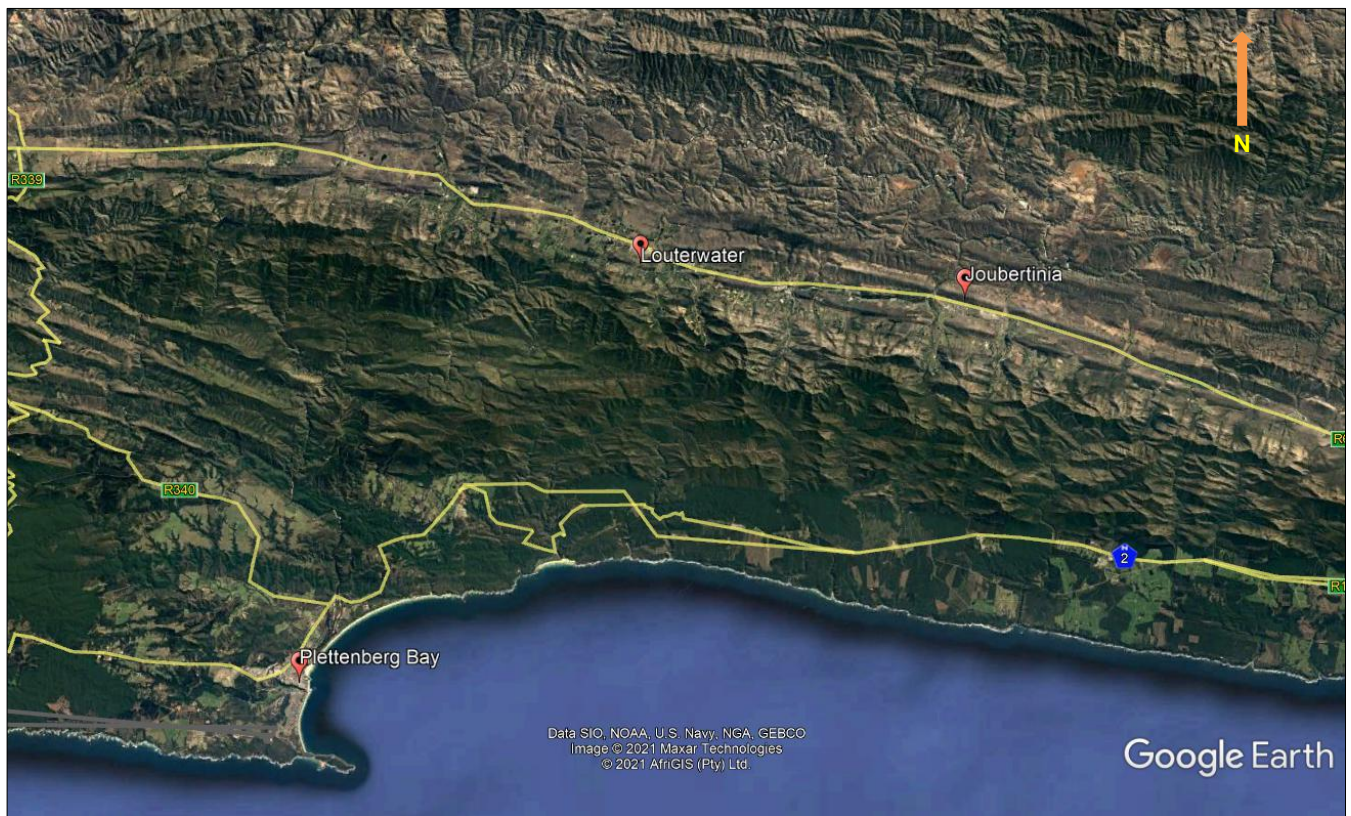


Figure 1. Google earth satellite map showing the regional context of the study site



Figure 2. Google satellite map indicating the town of Louterwater alongside the R62 and the surrounding land use

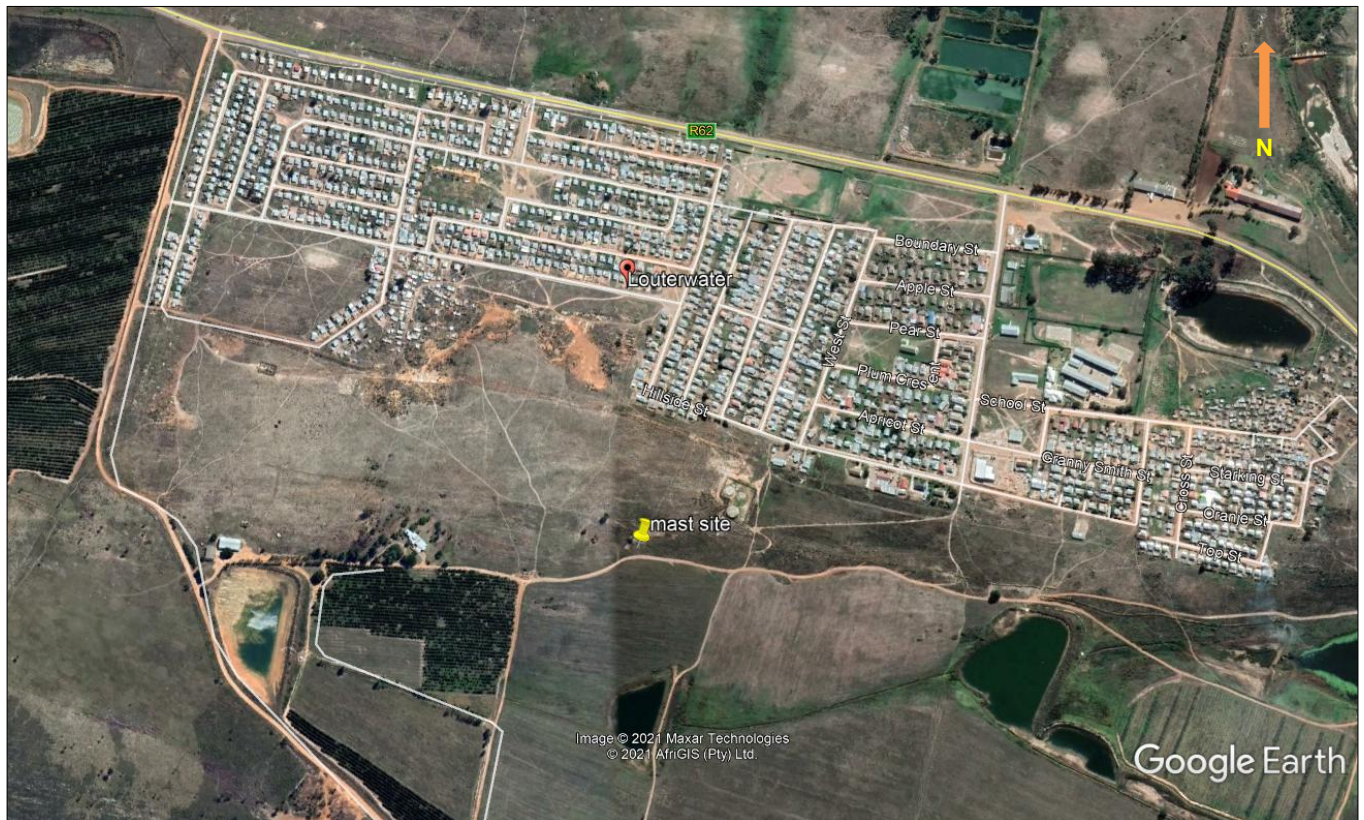


Figure 3. Close up Google satellite map showing the proposed mast site in relation to the town of Louterwater



Figure 4. Close up satellite map showing the location of the proposed mast site in old agricultural lands



Agency for Cultural Resource Management

Specialists in Archaeological Studies and Heritage Resource Management



Figure 5. General view of the proposed telecom site at Louerwater. The proposed site is on an already disturbed piece of land, with little to no natural vegetation cover. View facing north east

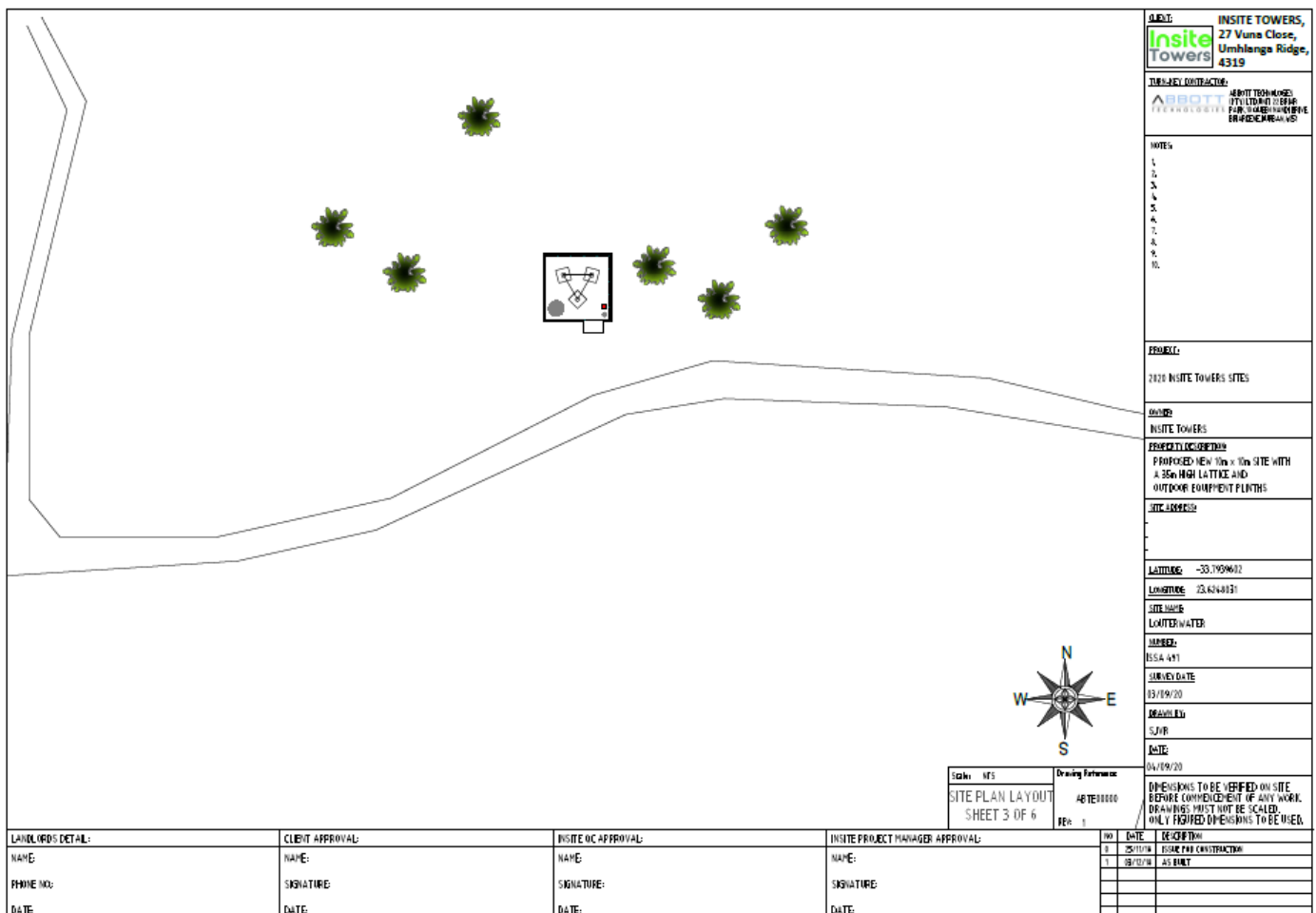


Figure 6. Floor plan of the proposed Louerwater telecommunication mast

