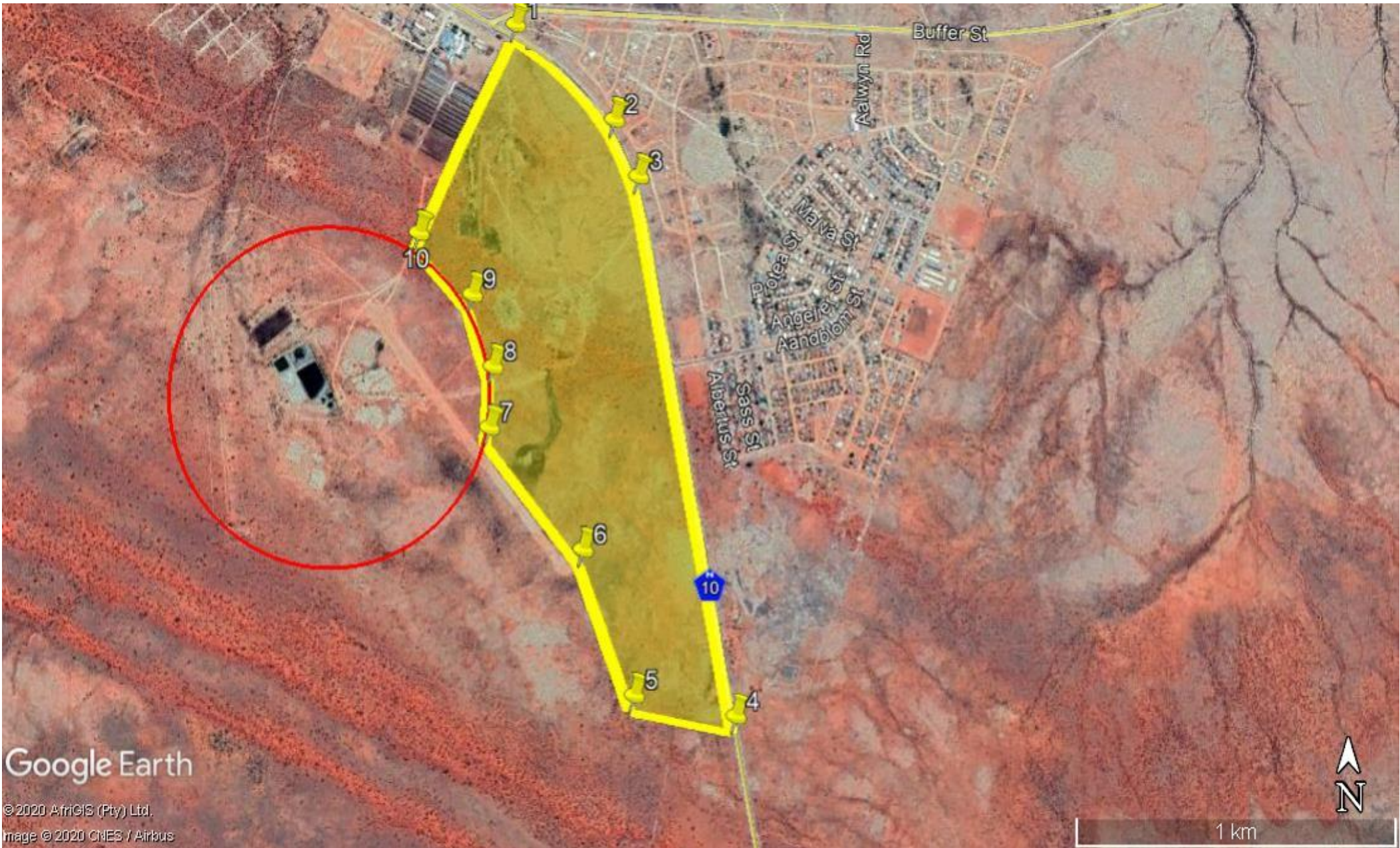


Appendix 4: Coordinates of corner points of the Groblershoop study area

Coordinates of corner points of study area (if there are more than 7 co-ordinates, please attach a list as Appendix 4) For linear developments a list of turning points must be attached	Point	Latitude (S) (DDMMSS)			Longitude (E) (DDMMSS)		
	1	28°	54'	5.75"	21°	59'	39.43"
	2	28°	54'	14.90"	21°	59'	50.83"
	3	28°	54'	20.19"	21°	59'	53.62"
	4	28°	55'	11.52"	22°	0'	4.86"
	5	28°	55'	9.52"	21°	59'	53.12"
	6	28°	54'	55.72"	21°	59'	47.21"
	7	28°	54'	44.08"	21°	59'	36.39"
	8	28°	54'	38.30"	21°	59'	36.87"
	9	28°	54'	31.40"	21°	59'	34.42"
10	28°	54'	25.58"	21°	59'	28.25"	

See map below for points relative to GPS Co-ordinates above.



Google Earth

© 2020 AfrGIS (Pty) Ltd.
Image © 2020 CNES / Airbus



1 km